

Rev. 11-18 Shaded area indicates changes

Mueller Inserting Tools are provided with an E-Z Release feature. This feature allows the drilling and tapping machine to disengage the corporation stop without backing the corporation stop out of the main. E-Z Release Inserting Tools consist of two parts (a shank and a nut) which are joined by a coarse acme thread. When the machine disengages the corporation stop, the two parts of the inserting tool separate at the acme thread. The part of the inserting tool left attached to the corporation stop is easily removed once the tapping machine is removed from the main.

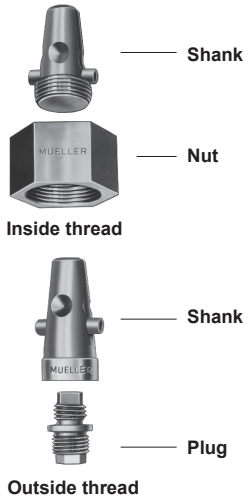


B-101 Inserting tools for corporation stops

Tool	Corporation stop outlet	Inserting Tool Size				
		1/2"	5/8"	3/4"	1"	1-1/4"
Inserting Tool	Copper flare connection	680598	680599	680600	680601	680602
	CTS Mueller 110® Conductive Compression Connection	-	-	680600	680601	683136
	CTS Pack Joint	-	-	680600	680601	-
	CTS Grip	-	-	680600	680601	-
	CTS Q Line	-	-	680600	680601	-
	IPS PE Mueller 110® Conductive Compression Connection	-	-	680688	680689	-
	IPS Grip	-	-	680688	680602	-
	PEP Pack joint	-	-	680688	680602	-
	PVC Pack joint	-	-	680688	680602	-
	Mueller coupling thread	680609	-	680611	680612	-
	I.P. copper flare connection	-	-	680603	680604****	-
	M.I.P. thread	-	-	680595	680596	680597
	Outside thread-Mueller Screw Plug thread	-	680653	680654	680655	-
	Outside thread-F.I.P. thread	680630	-	680631	680632	-
	Insulated	-	-	681722	681724	-
Kitec CTS	-	-	680600	680601	-	

****Outlet thread is one size larger than tubing

Inserting tool for corp stops

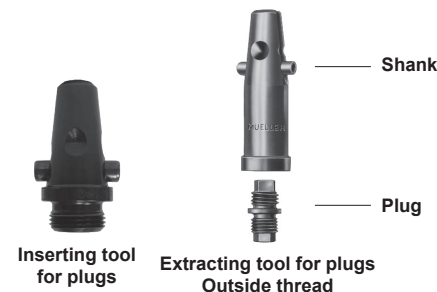


B-101 Extracting tools for corporation stops

Corporation stop outlet	Extracting Tool Size				
	1/2"	5/8"	3/4"	1"	1-1/4"
Copper flare connection	680622	-	680623	680624	580315
CTS Mueller 110® Conductive Compression Connection*	-	-	680623	680624	-
CTS Pack Joint	-	-	680623	680624	-
CTS Mueller Grip	-	-	680623	680624	-
CTS Q Line	-	-	680623	680624	-
PVC Pack Joint	-	-	681288	-	-
ISP PEP	-	-	681288	-	-
IPS PE Mueller 110® Conductive Compression Connection***	-	-	681288	680690	-
Mueller coupling thread	680614	680615	680616	680617	-
I.P. copper flare connection	680625	-	680626	680627	-
M.I.P. thread	680618	-	680619	680620	680621
Outside thread-Mueller Screw Plug thread	680633	680634	680635	680636	-
Outside thread-F.I.P. thread	680637	-	680638	680639	-
Insulated	-	-	681723	681725	-

*For type "K" copper service tubing or plastic tubing having the same O.D. (PE or PB).

*** For PE plastic pipe, meeting specifications ASTM D-2239 (SDR-7) 160 psi.

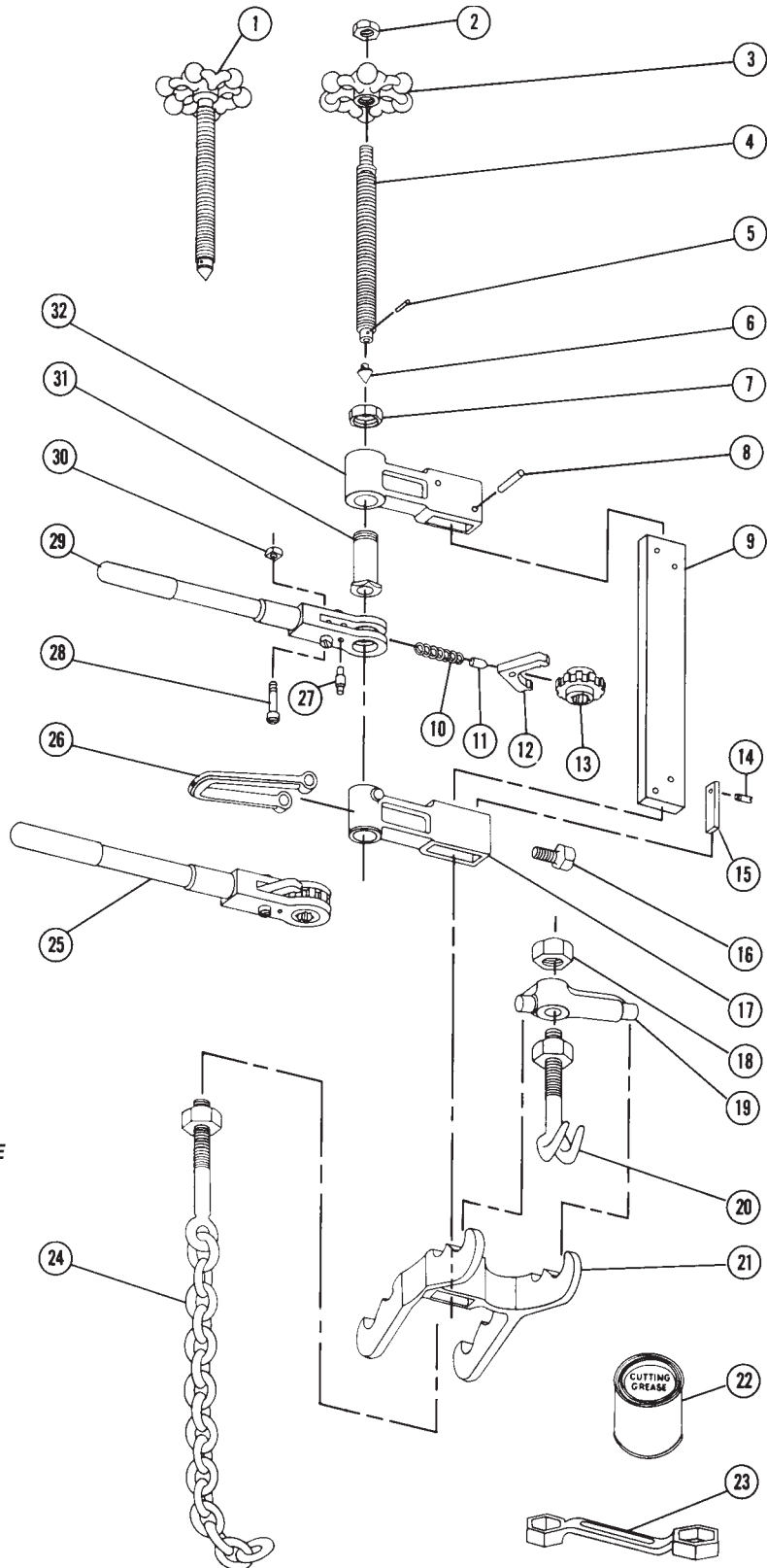


B-101 Inserting and Extracting tools of H-10034 and H-10037 plugs

Inserting and Extracting tool description	Size of Inserting or Extracting tool (same size as size of plug)							
	1/2"	5/8"	3/4"	1"	1-1/4"	1-1/2"	2"	2-1/2"
Inserting tool for H-10034 plug	680643	680644	680644	680644	680645	680645	680645	-
Inserting tool for H-10037 plug	-	-	680644	680644	680644	680645	680645	680645
Extracting tool H-10034 plug	680640	680641	680641	680641	680642	680642	680642	-
Extracting tool for H-10037 plug	-	-	680641	680641	680641	680642	680642	680642

Rev. 2-18 Shaded area indicates changes

Item No.	Part Number	Part Name
1	85324	Feed screw complete
2	51733	Nut
3	51732	Wheel
4	51731	Screw
5	62938	Pin
6	62887	Point
7	40349	Bushing nut
8	58155	Pin
9	58159	Standard
10	40007	Spring
11	40006	Spring pin
12	40004	Ratchet dog
13	40137	Ratchet wheel
14	40023	Key retaining pin
15	40319	Guide key
16	40318	Set screw
17	58224	Tool guide
18	40026	Chain nut
19	40311	Chain strap
20	85325	Chain hook with nut
21	40310	Base
22	88366	Cutting grease
23	40316	Double end box wrench
24	87206	Chain assembly
25	85303	Ratchet handle complete
26	40351	Swinging yoke
27	40139	Stud
28	40138	Bolt*
29	80109	Handlebar
30	46255	Nut*
31	40348	Feed screw bushing
32	58156	Feed screw guide



*Order both parts when replacing either one.

WTHE “H-W” MACHINE IS NO LONGER AVAILABLE; UNTIL FURTHER NOTICE, MUELLER WILL CONTINUE TO PROVIDE SPARE PARTS FOR THIS PRODUCT. CONTACT YOUR MUELLER REPRESENTATIVE ABOUT OTHER MACHINES THAT PERFORM WITHIN THE SPECIFICATIONS OF THIS MACHINE.

NOTE: These illustrations are for parts identification only. DO NOT use these illustrations for assembly or disassembly of machine. MUELLER CO. offers a machine repair service. Contact MUELLER® Customer Service Center for details.

TO ORDER SPECIFY QUANTITY, PART NUMBER AND PART NAME (include catalog number and model number of machine)