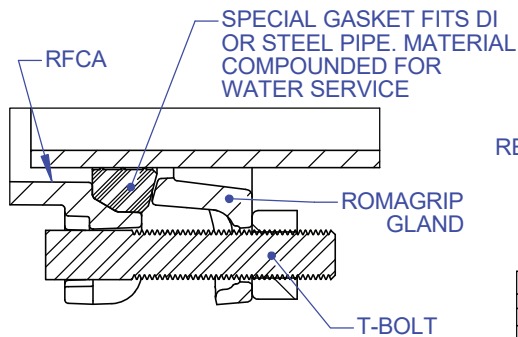
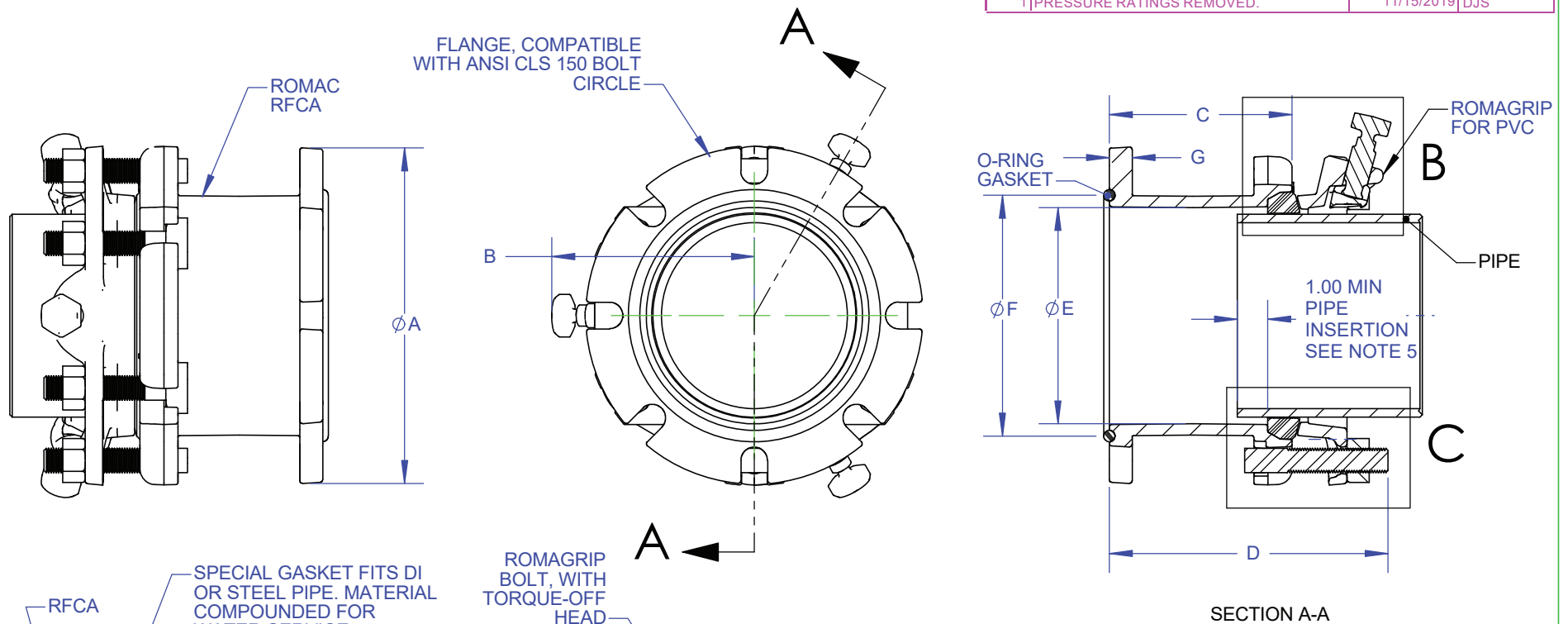
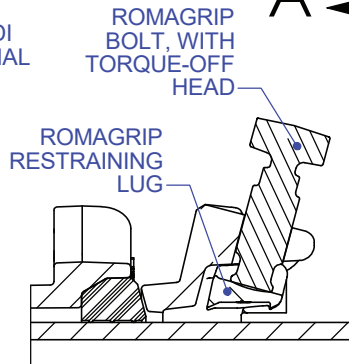


REVISIONS			
REV	DESCRIPTION	DATE	APPROVED
0	ORIGINAL RELEASE	7/24/2008	PZ
1	PRESSURE RATINGS REMOVED.	11/15/2019	DJS



DETAIL C  
SCALE 1 : 3





DETAIL B  
SCALE 1 : 3

NOM	DEFL.	FLG OD	RG MAX	T BOLTS			DIMENSIONS					WGT,
SIZE	(deg)	A	B	QTY	SIZE	LGTH	C	D	E	F	G	LBS
3	2.0	7.5	5.3	4	5/8"	3.75	4.88	8.00	4.04	4.66	0.75	21
4	3.5	9.0	5.7	4	3/4"	4.25	5.50	9.00	5.00	6.00	0.75	29
6	3.5	11.0	6.7	6	3/4"	4.25	6.00	9.25	7.10	7.90	0.75	40
8	3.3	13.5	7.8	6	3/4"	4.25	6.00	9.25	9.25	10.00	0.75	53
10	3.0	16.0	8.8	8	3/4"	4.25	6.75	10.25	11.30	12.40	0.75	82
12	3.0	19.0	9.9	8	3/4"	4.25	6.81	10.25	13.40	15.12	0.81	110

## NOTES:

1. COATING NSF 61 CERTIFIED: ROMAC SHOPCOAT PAINT. FUSION BONDED EPOXY AVAILABLE.
2. DUCTILE IRON AND T-BOLTS PER AWWA C 111. STAINLESS STEEL FASTENERS AVAILABLE.
3. FOR USE WITH PVS PIPE.
4. THE MINIMUM PIPE INSERTION IS 1.0" AT BOTH ZERO DEFLECTION AND AT MAXIMUM DEFLECTION VALUES (SEE TABLE).

THIS DRAWING CONTAINS CONFIDENTIAL PROPRIETARY INFORMATION AND IS THE PROPERTY OF ROMAC IND., INC. IT'S TO BE USED ONLY FOR THE PURPOSE FOR WHICH IT'S SUBMITTED AND SHALL NOT HAVE ITS INFORMATION DISCLOSED OR REPRODUCED IN WHOLE OR IN PART FOR ANY PURPOSE WITHOUT PRIOR WRITTEN PERMISSION OF ROMAC IND., INC.

SIGNATURES				ROMAC IND. INC., SEATTLE, WA	
DRWN	 Paul Zimpelman 2008.07.25 14:39:15 -0700			TITLE 3" - 12" RFCA-PVC RESTRAINED FLANGE COUPLING ADAPTER	
MATERIAL: DUCTILE IRON, ASTM A536 GR 65-45-12		SIZE A	DWG. NO. B3073-A		REV. NO. R1
SCALE NTS		SHEET 1 OF 1			