

# 101S & 202S SERVICE SADDLES

## SUBMITTAL INFORMATION



101S

202S

## MATERIALS

### CASTING

The saddle body is cast from ductile (nodular) iron, meeting or exceeding ASTM A 536, Grade 65-45-12.

### GASKET

Gasket is made from Nitrile Butadiene Rubber (NBR) compounded for water and sewer service and a tolerance of petroleum products in accordance with ASTM D 2000 MBC 610 and NSF 61 Certified. Other compounds available for special applications.

### STRAPS

Type 304 (18-8) heavy gauge Stainless Steel per ASTM A 240. Straps are two inches wide to spread out clamping forces on the pipe. GMAW and GTAW welds. Passivated for corrosion resistance.

### BOLTS, NUTS

For sizes 1-1/2" through 3", 1/2" UNC roll thread Type 304 (18-8) Stainless Steel bolts with heavy hex nuts. 4" and above use 5/8" UNC roll thread Type 304 (18-8) Stainless Steel bolts with heavy hex nuts. Rod for bolts are per ASTM A 240 and nuts are per ASTM A 194. All welds fully passivated for enhanced corrosion resistance. Nuts coated to prevent galling.

### WASHERS

Flat, type 304 (18-8) heavy gauge Stainless Steel.

### COATINGS

Shop coat applied to cast parts for corrosion protection in transit.

## PRESSURE

Ductile iron, cast iron and steel pipe: rating of pipe up to 350 psi maximum, on pipe sizes up through 24 inch, larger than 24 inch up to 30 inch pressure rating is 150 psi. PVC, asbestos cement and other pipe: up to the maximum rating of the pipe. For other applications please consult your representative.

## STANDARD

Contact Romac Engineering for ANSI/AWWA C800 Spec and Approval Chart.

## SIZES & RANGES

See catalog, sizes up through 32.10.

11/29/2018

Document # 25-8-0002

*This information is based on the best data available at the date printed above. Please check with Romac for any updates or changes.*



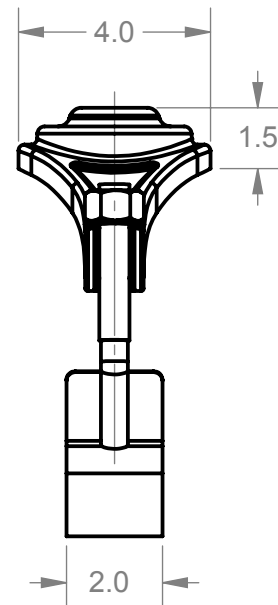
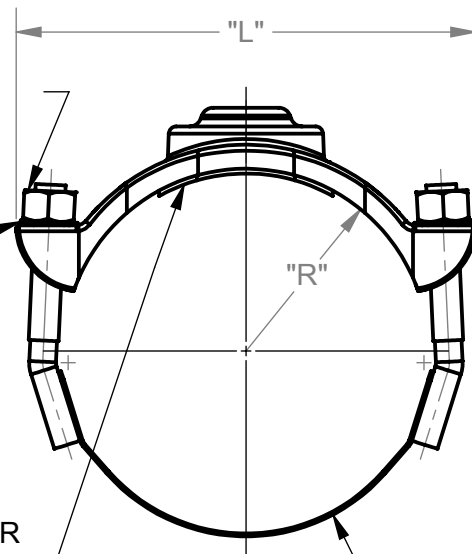
www.romac.com  
21919 20th Avenue SE • Suite 100 • Bothell, WA 98021  
Phone (425) 951-6200 • 1-800-426-9341 • Fax (425) 951-6201

5/8-11UNC WITH  
HEAVY HEX NUTS  
COATED TO  
PREVENT GALLING

TYPE 304 SS  
WASHER

GASKET, NBR  
RUBBER

STRAP, TYPE 304  
STAINLESS STEEL



#### NOTE:

1. ALL MATERIAL DUCTILE IRON PER ASTM A536 GR. 65-45-12 UNLESS NOTED OTHERWISE.
2. COATING:
  - 101S: SHOP COAT ENAMEL
  - 101NS: NYLON COATING 10-12 MILS THICK.
3. THREAD: "IP" (NPT) OR "CC" (PER AWWA C800) AVAILABLE.
4. STRAP: TYPE 304 STAINLESS STEEL, 5/8"-UNC THREAD WITH HEAVY HEX NUT AND FLAT WASHER. GMAW WELDED, CHEMICALLY CLEANED AND PASSIVATED.

#### REVISIONS

REV.	DESCRIPTION	DATE	EDITOR
R0	INITIAL RELEASE	'15 JUN 8	DEL EATON

NOMINAL SIZE	O.D. PIPE RANGE	LENGTH (L)	RADIUS (R)
4"	4.00 - 4.50	6.88	2.25
	4.50 - 4.80	6.88	2.40
	4.50 - 5.40	7.56	2.70
6"	6.00 - 6.63	8.75	3.32
	6.63 - 6.90	8.88	3.45
	6.63 - 7.60	9.63	3.80
8"	8.00 - 8.63	10.75	4.32
	8.63 - 9.05	11.13	4.53
	8.63 - 9.80	11.75	4.90
10"	10.00 - 10.75	13.38	5.38
	10.75 - 11.10	13.13	5.55
	11.10 - 12.12	14.00	6.06
12"	12.00 - 12.75	15.31	6.38
	12.75 - 13.20	15.13	6.60
	13.20 - 14.38	16.19	7.19

#### PROPRIETARY NOTICE

THIS DRAWING CONTAINS CONFIDENTIAL PROPRIETARY INFORMATION AND IS THE PROPERTY OF ROMAC IND., INC. IT IS TO BE USED ONLY FOR THE PURPOSE FOR WHICH IT WAS SUBMITTED AND SHALL NOT HAVE ITS INFORMATION DISCLOSED OR REPRODUCED IN WHOLE OR IN PART FOR ANY PURPOSE WITHOUT PRIOR WRITTEN PERMISSION OF ROMAC IND., INC.

#### UNLESS OTHERWISE SPECIFIED

DIMENSIONS ARE IN INCHES  
TOLERANCES ARE ON:  
1 PL DECIMALS  $\pm 0.020$   
2 PL DECIMALS  $\pm 0.010$   
3 PL DECIMALS  $\pm 0.005$   
ANGLES  $\pm 1^\circ$   
FRACTIONS  $\pm 1/64$

#### SIGNATURES

DRAWN

Del Eaton

APPROVED

Peter Nielsen

#### DATE

06/08/2015

9/25/2015



ROMAC INDUSTRIES INC.

TITLE

101S AND 101NS SADDLES  
4" - 12"

DWG. NO.  
CAD-021110

SIZE  
A

REV. NO.  
R0

SCALE  
1:4

SHEET  
1 OF 1