

Single Shank Mixing Faucets

TECK®
COMMERCIAL



SPECIFICATION: (EXAMPLE)

25C3847

- **CAST BRASS** single shank mixing sink faucet
- Two handle, polished chrome-plated finish
- **CER-TECK®** 1/4 turn ceramic structures
- Metal hold-down package
- Anti-rotation, body mounted locking pins
- **BRASS** swing-spout or 3/8" IPS **BRASS PIPE** Rigid/Swivel Gooseneck Spout
- Color indexed metal handles with vandal resistant screws
- and ... with ... (add spout required)
- with ... (add outlet required)



Engineer/Architect Approval

Model Specified:

Approval:

Date:

MODEL NUMBER EXAMPLE:

Configurations vary, see below for availability.

25C3937-R7

Variation

8 = 4.5" (114 mm) gooseneck spout
9 = 6" (152 mm) gooseneck spout

Outlet

2 = Vandal resistant laminar outlet
3 = Vandal resistant aerator
4 = Standard aerator outlet
5 = Vandal resistant spray outlet
7 = Smooth end, laminar outlet

1.5 gpm (5.7 L/min)
1.5 gpm (5.7 L/min)
1.5 gpm (5.7 L/min)
0.5 gpm (1.9 L/min)
1.0 gpm (3.8 L/min)

Handle

7 = 2.5" (63.5 mm)
balanced lever blade

R* = Optional gooseneck
spout dimensions:
R7 = 9" long, 16.2" high
R35 = 6" long, 11.8" high

AVAILABLE MODELS		VARIATIONS	
HANDLE	3 Balanced Lever 2.5" (63.5 mm)	8 Gooseneck R2 Spout 4.5" (114 mm) long, 14" (356 mm) high	9 Gooseneck R4 Spout 6" (152 mm) long, 13.9" (354 mm) high
	25C3827 25C3837 25C3847 25C3857 25C3877	25C3927 25C3937 25C3937-R7 25C3947 25C3947-R7 25C3957 25C3977 25C3977-R35	

Refer to www.specselect.com for individual models.

Flow Rates are at 60 PSI.
Note: Use this page front and back as a product submittal sheet.

Delta reserves the right (1) to make changes in specifications and materials, and (2) to change or discontinue models, both without notice or obligation. Dimensions are for reference only. See current full-line price book or www.specselect.com for finish options and product availability.



DSP-25C Rev. C

Single Shank Mixing Faucets

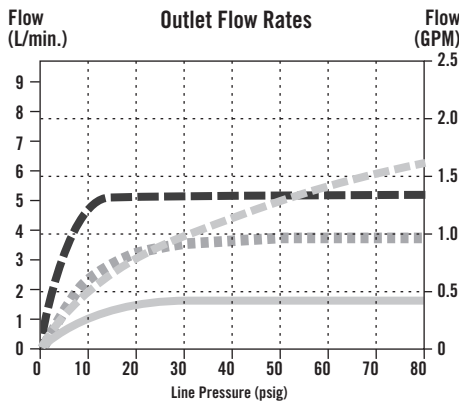
TECK
COMMERCIAL

DELTA

APPROVALS:

- CSA certified
 - Complies to ASME A112.18.1/CSA B125.1
 -  Indicates compliance to ICC/ANSI A117.1
 -  Outlet options 2, 3, 4 and 7 are EPA WaterSense listed
 - Verified compliant with 0.25% weighted average Pb content regulations
- (Contact Delta Representative for State and/or Local Approvals.)

FLOW RATE vs PRESSURE

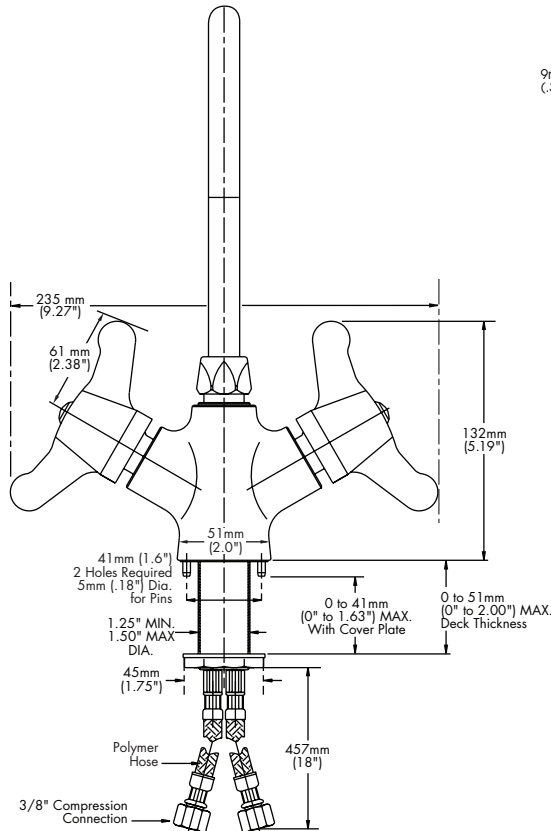


OUTLET NO.	"D"	
	mm	in.
2	18	0.69
3	18	0.69
4	17	0.67
5	18	0.69

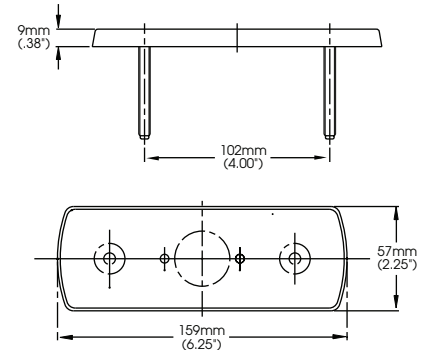
FOR OPTIONAL RIGID/SWIVEL & LIMITED SWING SPOUTS

See **DSP-R/S** for detailed specification.

FRONT VIEW



4" COVERPLATE (ORDER SEPARATELY)



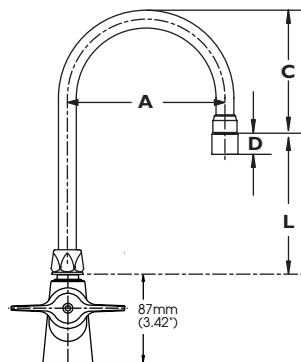
OPTIONAL COVERPLATE

PRODUCT NO.	DESCRIPTION
060585A	4" Coverplate

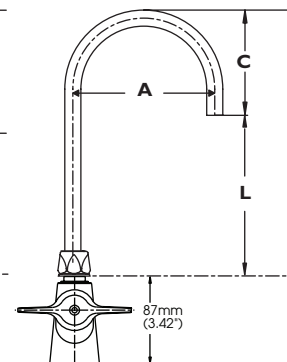
Available optional coverplate for field conversion. Includes anti-rotation pin for secure public lavatory installation.

GOOSENECK SPOUTS

Outlets #2, 3, 4, 5



Outlet #7



GOOSENECK SPOUT ASSEMBLY #8

SPOUT/OUTLET	"A"		"C"		"L"	
	mm	in.	mm	in.	mm	in.
Gooseneck-Standard (R2) for outlets #2, 3, 4 & 5	114	4.5	104	4.1	170	6.7
Gooseneck-Standard (R2) for outlet #7	114	4.5	97	3.8	178	7.0

GOOSENECK SPOUT ASSEMBLY #9

SPOUT/OUTLET	"A"		"C"		"L"	
	mm	in.	mm	in.	mm	in.
Gooseneck-Standard (R4) for outlets #2, 3, 4 & 5	152	6	124	4.9	146	5.8
Gooseneck-Standard (R4) for outlet #7	152	6	117	4.6	152	6.0

INLETS - 3/8" compression connection

Note: Measurements may vary ± 6 mm (0.25")

Refer to www.specselect.com for individual models.

Note: Use this page front and back as a product submittal sheet.

DSP-25C Rev. C

Delta reserves the right (1) to make changes in specifications and materials, and (2) to change or discontinue models, both without notice or obligation. Dimensions are for reference only. See current full-line price book or www.specselect.com for finish options and product availability.