

# Wallmount Service Sink Faucet Rigid Spout – Rough Chrome-Plated

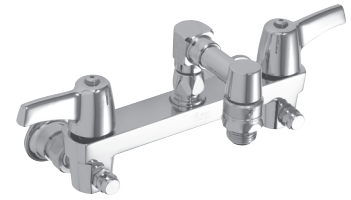
**TECK®**  
COMMERCIAL



## SPECIFICATION: (EXAMPLE)

28C8063

- **HEAVY-DUTY CAST BRASS** two handle wallmount service sink faucet
- 203mm (8") centers, **rough chrome-plated finish**
- Integral check stops
- **HEAVY DUTY 1/2" IPS BRASS PIPE** rigid pail hook spout
- ADA compliant color indexed handles with vandal resistant screws
- **CER-TECK®** 1/4 turn ceramic structures
  - and... with... (add spout/brace required)
  - with... (add outlet/VB required)
  - with... (add handle required)
  - with... adjustable centers (add suffix **-AC** if required – see back page)



### Engineer/Architect Approval

Model Specified:

Approval:

Date:

## MODEL NUMBER EXAMPLE:

Configurations vary, see below for availability.

**28C8183-AC**

### Variation (Spout/Brace)

- 0 = 5.5" (140 mm) plain spout\*
- 1 = 8" (203 mm) spout with top/bottom brace\*

### Outlet

- 6 = Spout end vacuum breaker
- 7 = Spout end vacuum breaker w/hose and hanger
- 8 = Body mounted vacuum breaker

### Handle

- 3 = Hooded lever

AC = 5.5" to 10.5" adjustable centers

AVAILABLE MODELS		OUTLET/VACUUM BREAKER		
HANDLES	3 Hooded Lever 3" (76 mm)	<b>6</b> Spout End Vacuum Breaker 	<b>7</b> Spout End Vacuum Breaker with 48" Hose and SS Hanger 	<b>8</b> Body Mounted Vacuum Breaker 
		28C8063 28C8163	28C8073 28C8173	28C8083 28C8183 28C8183-AC

## VARIATION (SPOUT/BRACE)

**1**

Spout with Adjustable Top/Bottom Brace  
10.5" (267 mm)\*



\*Distance from wall to spout outlet with spout end vacuum breaker

See 28T9 Series for Hose and Accessories. (1) Distance from wall to Spout Outlet based on #6 Outlet. Refer to [www.specselect.com](http://www.specselect.com) for individual models.

Flow Rates are at 60 PSI.  
Note: Use this page front and back as a product submittal sheet.

Delta reserves the right (1) to make changes in specifications and materials, and (2) to change or discontinue models, both without notice or obligation. Dimensions are for reference only. See current full-line price book or [www.specselect.com](http://www.specselect.com) for finish options and product availability.

**DSP-28C8** Rev. E

# Wallmount Service Sink Faucet Rigid Spout – Rough Chrome-Plated

**TECK<sup>®</sup>**  
COMMERCIAL



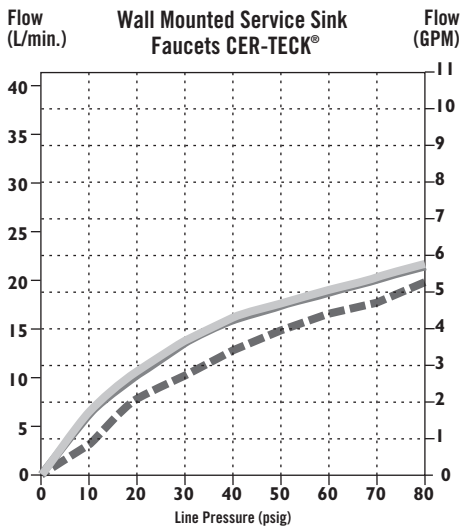
## APPROVALS:

- CSA certified
- Complies to ASME A112.18.1/CSA B125.1
- Indicates compliance to ICC/ANSI A117.1
- **OUTLET/VACUUM BREAKERS:**
  - No. 6 Certified under ASSE 1011 and CSA Standard B64.2
  - No. 8 Certified under ASSE 1001 and CSA Standard B64.1.1

(Contact Delta Representative for State and/or Local Approvals.)

**Not for potable water.**

## FLOW RATE vs PRESSURE



Vacuum Breaker Type

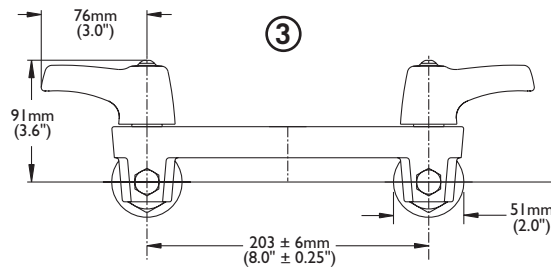
— No. 6 & No. 7 V.B. — No. 8

## AVAILABLE OPTIONS FOR FIELD CONVERSION

- ☐ **28T911**  
Hose and Hanger  
See **DSP-28T9** for detailed specification.

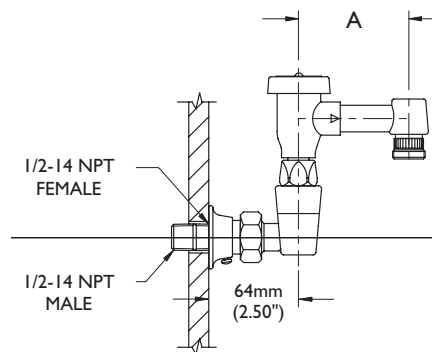
Note: Supplied with #7 Outlet/VB

## WALLMOUNT FAUCET

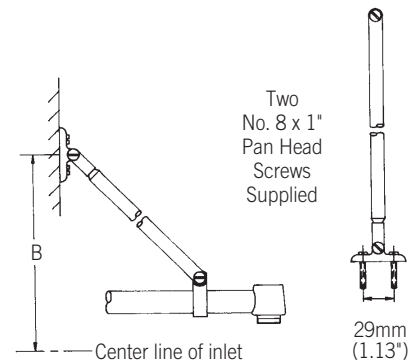


INLETS: 1/2-14 NPT (FEMALE)  
OR 1/2-14 NPT (MALE) –  
WITH SUPPLIED NIPPLE

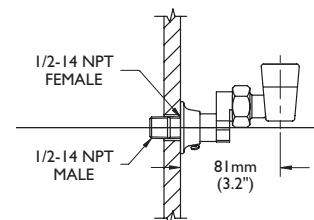
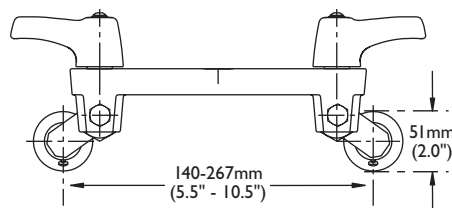
## SIDE VIEW



## BRACE



## ADJUSTABLE CENTERS (AC) or separate order of 063105A



Brace Rough-in dimensions  
based on #8 Outlet/VB

INLETS – 1/2" FIP/MIP

## RIGID SPOUT ASSEMBLIES

SPOUT DIMENSIONS	Outlet/VB – "A"			
	#6 & 7		#8	
	mm	in.	mm	in.
Spout/Brace #0 less -AC	81	3.2	86	3.4
Spout/Brace #1 less -AC	140	5.5	145	5.7

Note: Measurements may vary  $\pm 6\text{mm}$  (0.25")

Refer to [www.specselect.com](http://www.specselect.com) for individual models.

Note: Use this page front and back as a product submittal sheet.