

# Wallmount Service Sink Faucets Rigid Spout

**TECK**<sup>®</sup>  
COMMERCIAL

**DELTA**<sup>®</sup>

## SPECIFICATION: (EXAMPLE)

- **HEAVY-DUTY CAST BRASS** two handle wallmount service sink faucet
- 203mm (8") centers, polished chrome plated finish
- Integral check stops
- **HEAVY DUTY 1/2" IPS BRASS PIPE** rigid pail hook spout
- Hose thread outlet
- ADA compliant color indexed handles with vandal resistant screws
- **CER-TECK**<sup>®</sup> 1/4 turn ceramic structures
- and... with... (add spout/brace required)
- with... (add outlet/VB required)
- with... (add handle required)
- with... adjustable centers (add suffix **-AC** if required – see back page)

28C2384



28C2383



### Engineer/Architect Approval

Model Specified:

Approval:

Date:

## MODEL NUMBER EXAMPLE:

Configurations vary, see below for availability.

**28C2383-AC**

### Variation (Spout/Brace)

- 0 = 5.5" (140 mm) plain spout\*
- 3 = 10.5" (267 mm) spout with top/bottom brace\*
- 9 = 16" (406 mm) spout with bottom fork brace\*

### Outlet

- 1 = Body mounted double check vacuum breaker†
- 6 = Spout end vacuum breaker
- 8 = Body mounted vacuum breaker

### Handle

- 3 = Hooded lever
- 4 = Blade w/sanitary hood
- 5 = Wrist w/sanitary hood

AC = 5.5" to 10.5" (140 mm - 267 mm) adjustable centers

AVAILABLE MODELS		OUTLET/VACUUM BREAKER		
		1 Body Mounted Double Check Vacuum Breaker†	6 Spout End Vacuum Breaker	8 Body Mounted Vacuum Breaker
<b>HANDLES</b>	<b>3</b> Hooded Lever 3" (76 mm)	28C2313	28C2063 28C2363 28C2363-AC	28C2083 28C2383 28C2383-AC 28C2983
	<b>4</b> Blade with Sanitary Hood 4" (102 mm)	28C2314 28C2914	28C2064 28C2364 28C2964	28C2384 28C2384-AC 28C2984
	<b>5</b> Wrist with Sanitary Hood 6" (152 mm)			28C2385 28C2985

## VARIATION (SPOUT/BRACE)

**3**

Spout with Adjustable Top/Bottom Brace  
10.5" (267 mm)\*



**9**

Spout with Bottom Fork Brace  
16" (406 mm)\*



\*Distance from wall to spout outlet with spout end vacuum breaker  
†Recommended for applications with a shut-off valve after spout outlet.

Refer to [www.specselect.com](http://www.specselect.com) for individual models.  
Note: Use this page front and back as a product submittal sheet.

Flow Rates are at 60 PSI.

Delta reserves the right (1) to make changes in specifications and materials, and (2) to change or discontinue models, both without notice or obligation.  
Dimensions are for reference only. See current full-line price book or [www.specselect.com](http://www.specselect.com) for finish options and product availability.


**DSP-28C2** Rev. E

# Wallmount Service Sink Faucets Rigid Spout

**TECK**  
COMMERCIAL

**DELTA**

## APPROVALS:

- CSA certified
- Complies to ASME A112.18.1/CSA B125.1
- Handles No. 3, 4, and 5
-  Indicates compliance to ICC/ANSI A117.1

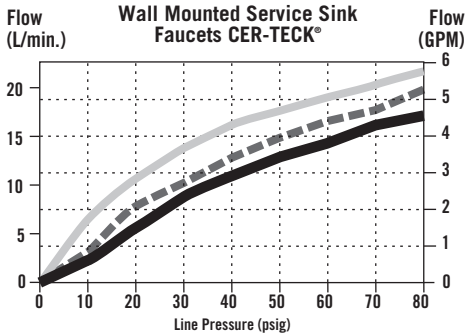
## OUTLET/VACUUM BREAKERS:

- No. 1 Certified under CSA Standard B64.8
- No. 6 Certified under ASSE 1011 and CSA Standard B64.2
- No. 8 Certified under ASSE 1001 and CSA Standard B64.1.1

(Contact Delta Representative for State and/or Local Approvals.)

**Not for potable water.**

## FLOW RATE vs PRESSURE



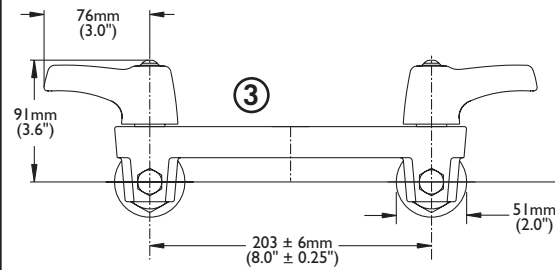
### Outlet/Vacuum Breaker Type

- No. 6 V.B.      — No. 8
- No. 1 V.B.

## AVAILABLE OPTIONS FOR FIELD CONVERSION

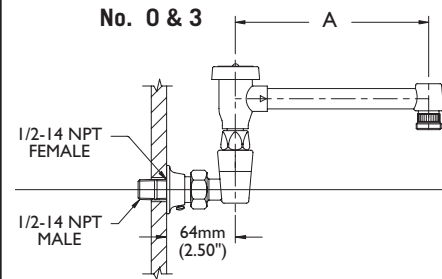
- 28T911  
Hose and Hanger  
See DSP-28T9 for detailed specification.

## WALLMOUNT FAUCET

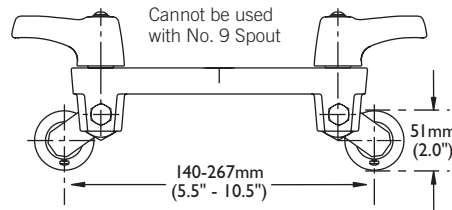


INLETS: 1/2-14 NPT (FEMALE)  
OR 1/2-14 NPT (MALE) – WITH SUPPLIED NIPPLE

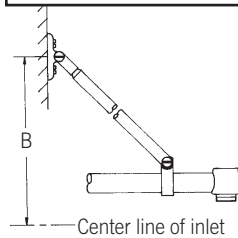
## SPOUT/BRACE



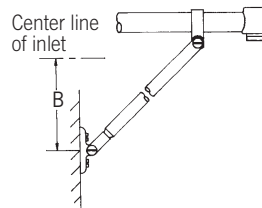
## ADJUSTABLE CENTERS (AC) or separate order of 063105A



## TOP BRACE



## BOTTOM BRACE



## BRACES

Two No. 8 x 1" Pan Head Screws Supplied

Four No. 8 x 1" Pan Head Screws Supplied

29mm (1.13")

29mm (1.13")  
114mm (4.5")

Brace Rough-in dimensions based on #8 Outlet/VB

INLETS – 1/2" FIP/MIP on Spouts # 0 & 3

INLETS – 1/2" FIP on Spout # 9

Note: Measurements may vary ± 6mm (0.25")

Refer to [www.specselect.com](http://www.specselect.com) for individual models.

## RIGID SPOUT ASSEMBLIES

SPOUT DIMENSIONS	Outlet/VB – "A"					
	#1		#6		#8	
	mm	in.	mm	in.	mm	in.
Spout/Brace #0 less -AC	104	4.1	81	3.2	86	3.4
Spout/Brace #3 less -AC	211	8.3	203	8.0	208	8.2
Spout/Brace #9 less -AC	211	8.3	203	8.0	208	8.2
Spout/Brace #0 with -AC	104	4.1	81	3.2	86	3.4
Spout/Brace #3 with -AC	211	8.3	203	8.0	208	8.2
Spout/Brace #9 with -AC	#9 spout/brace not available with -AC suffix					

Note: Use this page front and back as a product submittal sheet.