



**Undertone®**  
Under-mount Kitchen Sink  
**K-3164**

**Features**

- 21-inch minimum base cabinet width.
- 18-gauge stainless steel.
- Under-mount.
- Single compartment.
- Rounded bowl.
- With SilentShield® sound-absorption technology.
- 15-1/2" (394 mm) x 19-5/8" (500 mm)

**Optional Accessories**

K- 3278 Cutting Board  
K- 3291 Colander  
K- 8801 Sink Strainer

**Components**

Product includes:  
91915 Hardware Kit



ADA

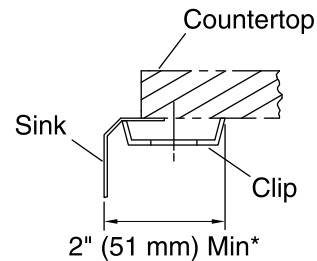
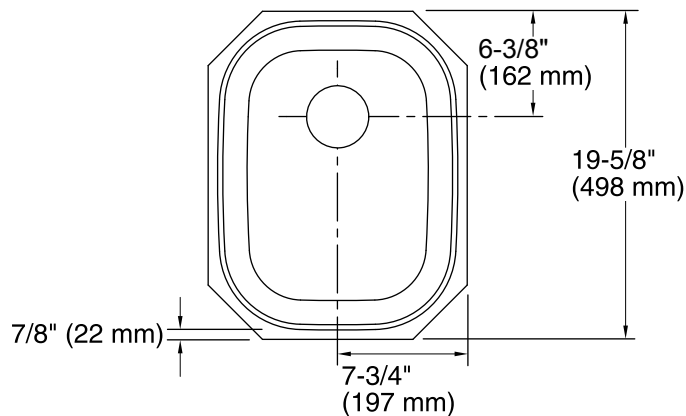
**Codes/Standards**

ASME A112.19.3/CSA B45.4  
ADA  
ICC/ANSI A117.1

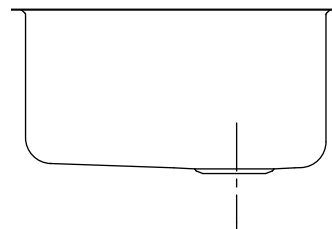
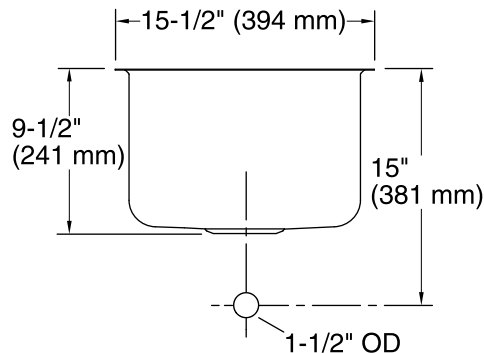
**Lifetime Limited Warranty for**

**KOHLER® Stainless Steel Sinks**

See website for detailed warranty information.



\* Allow clearance around sink rim for clip attachment.



## Technical Information

All product dimensions are nominal.

Bowl configuration: Single

Installation: Under-mount

Bowl area  
Length: 13-3/4" (349 mm)  
Width: 17-7/8" (454 mm)  
Bowl depth: 9-1/2" (241 mm)

Drain hole: 3-5/8" (92 mm)

Template: Under-mount, 113198, required, included

## Notes

Install this product according to the installation guide.

Allow a minimum of 2" (51 mm) clearance around the sink rim for clip attachment.

ADA compliant when installed to the specific requirements of these regulations.