



ADA

CSA B651

OBC

## Codes/Standards

ASME A112.19.1/CSA B45.2

ADA

ICC/ANSI A117.1

CSA B651





OBC

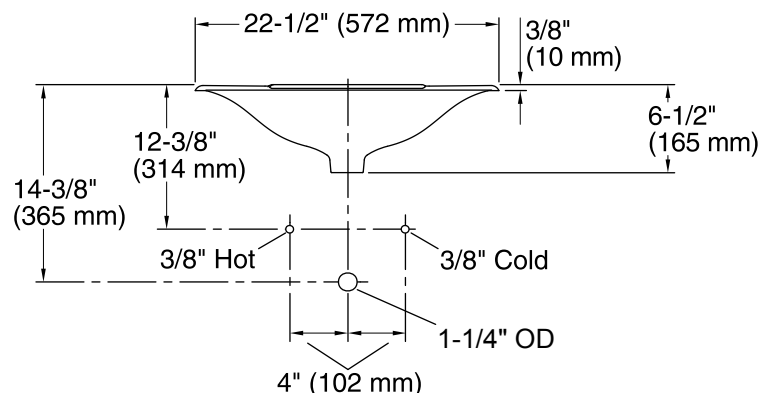
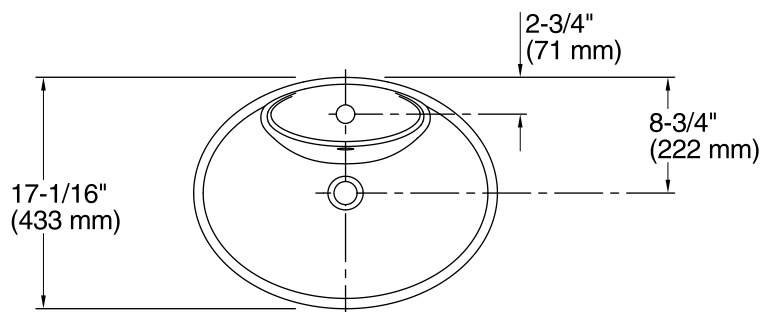
## KOHLER® Lifetime Limited Warranty for Cast Iron Components

See website for detailed warranty information.

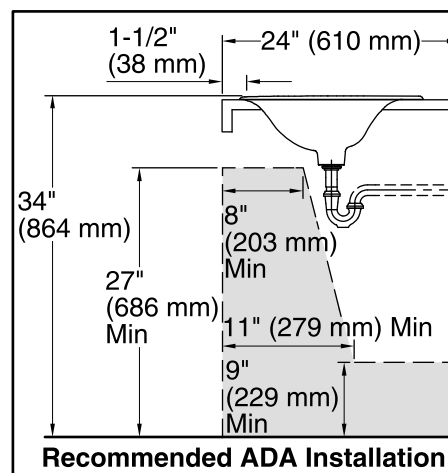
## Available Color/Finishes

*Color tiles intended for reference only.*

Color	Code	Description
	0	White
	FF	Sea Salt™
	96	Biscuit
	47	Almond
	FD	Cane Sugar™
	FT	Basalt
	KA	Black 'n Tan



**Standard Installation**



## Technical Information

All product dimensions are nominal.

Bowl configuration: Single

Installation: Drop-In

Bowl area (Only) Length: 21-1/16" (535 mm)  
Width: 11-1/4" (286 mm)  
Bowl depth: 4-1/2" (115 mm)  
Water depth: 4-1/2" (115 mm)

Number of deck holes: 1

Faucet hole(s): 1-3/8" (35 mm)

Drain hole: 1-3/4" (44 mm)

Template: Drop-in, 1046628-7, not required, included

## Notes

Install this product according to the installation guide.

**NOTICE:** Countertop manufacturer or cutter must use the cut-out template provided with the product, or a current one provided by Kohler Co. (call 1-800-4-KOHLER). Kohler Co. is not responsible for cutout errors when the incorrect cut-out template is used.

Product does not have an overflow.

ADA, OBC, CSA B651 compliant when installed to the specific requirements of these regulations.