



**Undertone®**  
Under-mount Kitchen Sink  
**K-3186**

**Features**

- 30-inch minimum base cabinet width.
- 18-gauge stainless steel.
- Under-mount.
- Single compartment.
- With SilentShield® sound-absorption technology.
- 24-1/4" (622 mm) x 21-1/4" (540 mm)

**Optional Accessories**

- K- 2996 Sink Rack
- K- 8801 Sink Strainer

**Components**

- Product includes:
- 91915 Hardware Kit



**Codes/Standards**

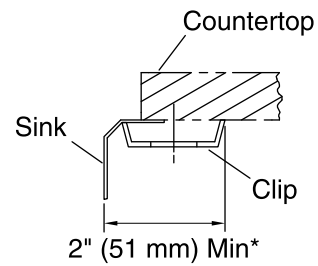
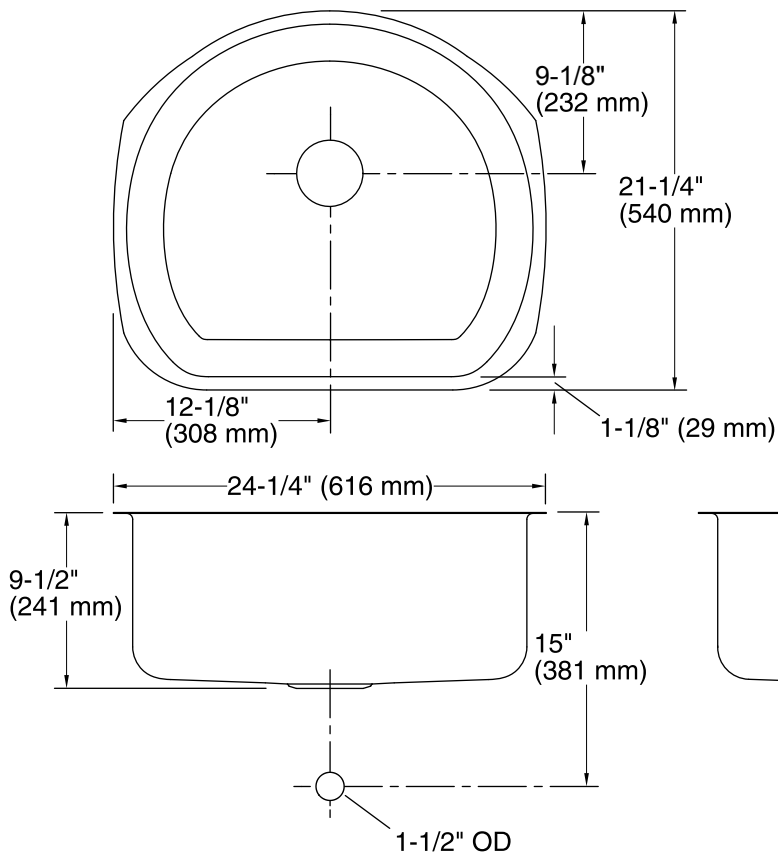
ASME A112.19.3/CSA B45.4

**Lifetime Limited Warranty for  
KOHLER® Stainless Steel Sinks**

See website for detailed warranty information.



**Undertone®**  
Under-mount Kitchen Sink  
**K-3186**



*\* Allow clearance around sink rim for clip attachment.*

**Technical Information**

All product dimensions are nominal.

Bowl configuration: Single

Installation: Under-mount

Bowl area  
Length: 19" (483 mm)  
Width: 22" (559 mm)  
Bowl depth: 9-1/2" (241 mm)

Drain hole: 3-5/8" (92 mm)

Template: Under-mount, 1040321-7, required, included

**Notes**

Install this product according to the installation guide.

Allow a minimum of 2" (51 mm) clearance around the sink rim for clip attachment.