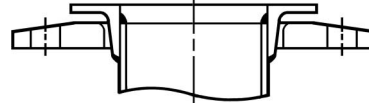
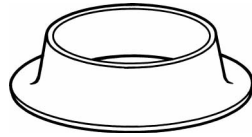
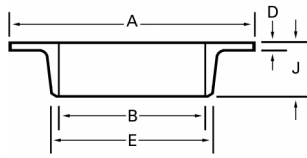
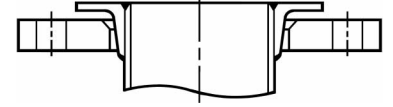


# Stainless Steel Slip-On Stub Ends

## SK-38-SO and SK-38-PSO Stainless Steel Slip-On Stub Ends



Recommended welding configuration allowing maximum length adjustment. As shown with Alaskan SK-39-SO or SK-39-PSO backing flanges.



Recommended welding configuration when interior finish is critical. As shown with Alaskan SK-70-SO or SK-70-PSO backing flanges.

- Machined face provides dependable gasket seating in an economical stainless steel slip-on stub end.
- Designed to slip-on and weld to "as welded" pipe, tube and fittings.
- The thick cross section combines strength with dimensional stability.
- Slip-on design provides for length adjustment and ease of fit-up prior to welding.
- Material thickness of the stub end adds overall reinforcement.
- Alaskan SK-38-SO can be used as butt welding stub end on light-wall ID tubing.
- Cast in ACI grade CF-3M (316L) and (317L), or forged in T-316-L.
- Alaskan SK-38-SO slip-on stub ends are normally used with Alaskan SK-39-SO steel backing flanges.
- Alaskan SK-38-PSO stub ends are normally used with Alaskan SK-39-PSO steel backing flanges.

### SK-38-SO

Made to Fit OD Tube Size Diameters

Tube OD	2	2 1/2	3	4	6	8	10	12	14	16	18	20	24	30	36
A (Lap Dia.)	3 5/8	4 1/8	5	6 3/16	8 1/2	10 5/8	12 3/4	15	16 1/4	18 1/2	21	23	27 1/4	33 3/4	40 3/8
B (ID Bore)	2 1/16	2 9/16	3 1/16	4 1/16	6 1/16	8 1/16	10 1/16	12 1/16	14 1/16	16 1/16	18 1/16	20 1/16	24 1/16	30 1/16	36 1/8
J (Length)	1 1/4	1 1/4	1 1/4	1 1/4	1 3/8	1 1/2	1 5/8	1 5/8	1 3/4	1 3/4	2	2	2	2	2
D	3/16	3/16	3/16	3/16	3/16	1/4	1/4	5/16	5/16	5/16	3/8	3/8	3/8	9/16	11/16
E	2 5/16	2 13/16	3 5/16	4 5/16	6 3/8	8 3/8	10 3/8	12 7/16	14 7/16	16 7/16	18 7/16	20 7/16	24 7/16	30 15/16	37 1/8
Weights	.75	1.0	1.2	2.0	3.0	5.5	6.7	9.5	10.5	11.2	18.0	19.7	26.5	45	

### SK-38-PSO

Made to Fit Nominal Pipe Size Diameters

Nominal Pipe Size	1	1 1/2	2	2 1/2	3	4	6	8	10	12	14 thru 24 see SK-38-SO
Pipe OD			2 3/8	2 7/8	3 1/2	4 1/2	6 5/8	8 5/8	10 3/4	12 3/4	
A (Lap Dia.)			3 5/8	4 1/8	5	6 3/16	8 1/2	10 5/8	12 3/4	15	
B (ID Bore)			2 7/16	2 15/16	3 9/16	4 9/16	6 11/16	8 11/16	10 13/16	12 13/16	
J (Length)			1 1/4	1 1/4	1 1/4	1 1/4	1 3/8	1 1/2	1 5/8	1 5/8	
D			3/16	3/16	3/16	3/16	3/16	1/4	1/4	5/16	
E			2 3/4	3 1/4	3 7/8	4 7/8	7	9 1/16	11 3/16	13 3/16	
Weights			.75	.90	1.0	2.0	3.0	4.5	6.0	8.5	

Dimensions are in inches. All weights are in pounds based on a metal density of .29 lb/in<sup>3</sup>