



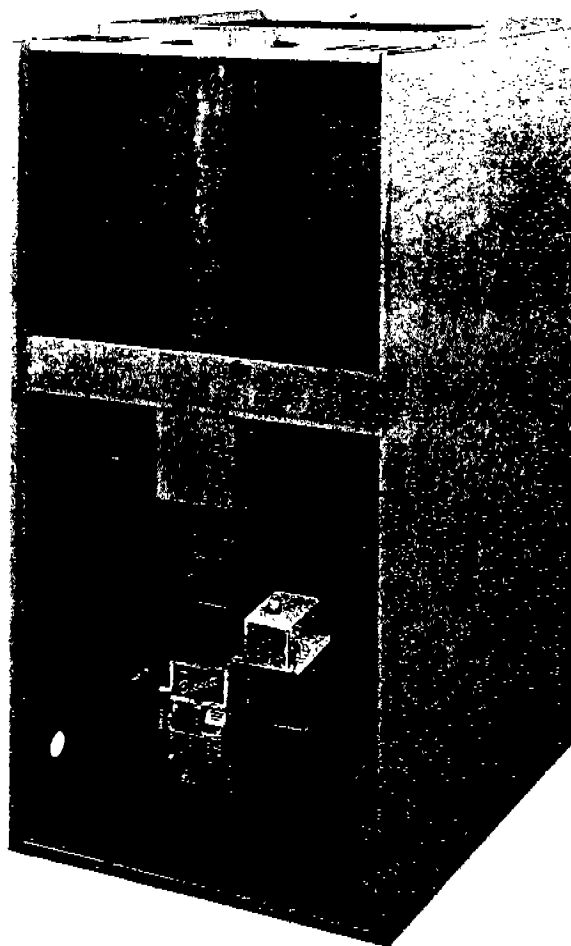
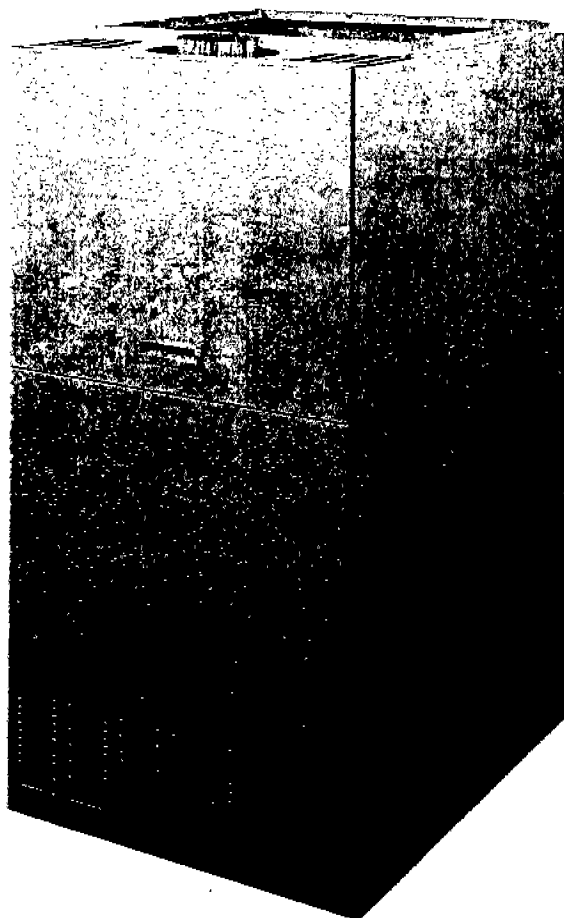
**R/R** RELIABLE  
REPLACEMENTS  
Fort Smith, Arkansas 72917-7010

# REPLACEMENT PARTS LIST

MODEL [-]ONG OIL FIRED  
DOWNFLOW FURNACE

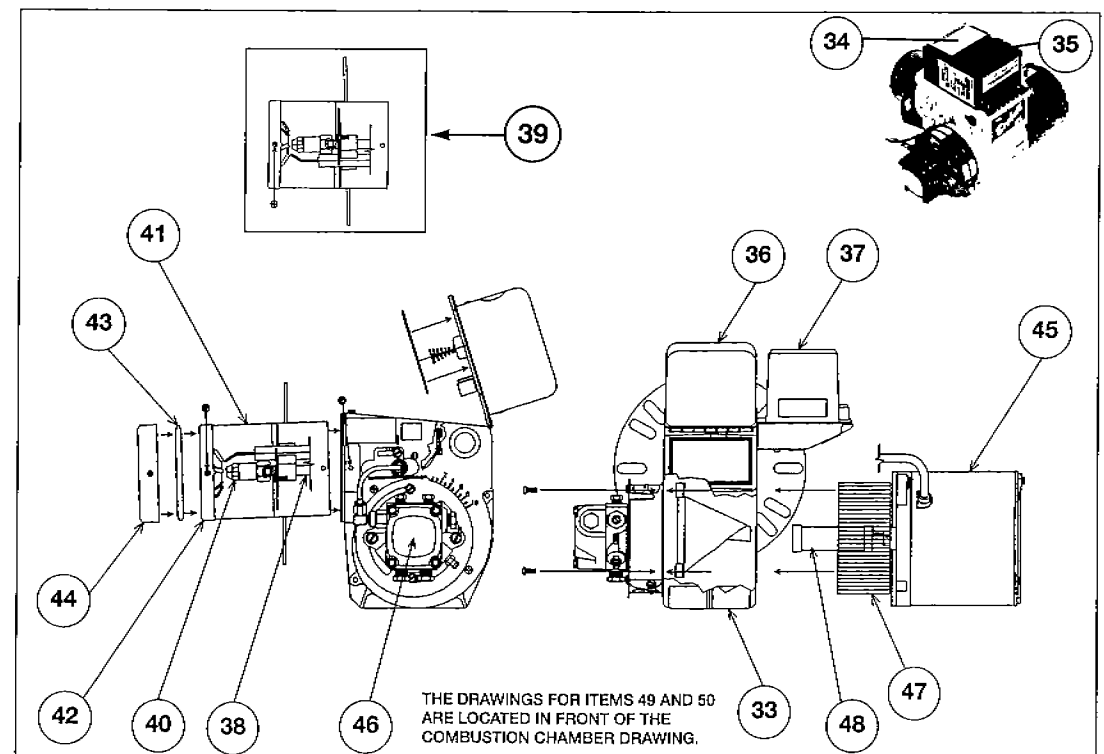
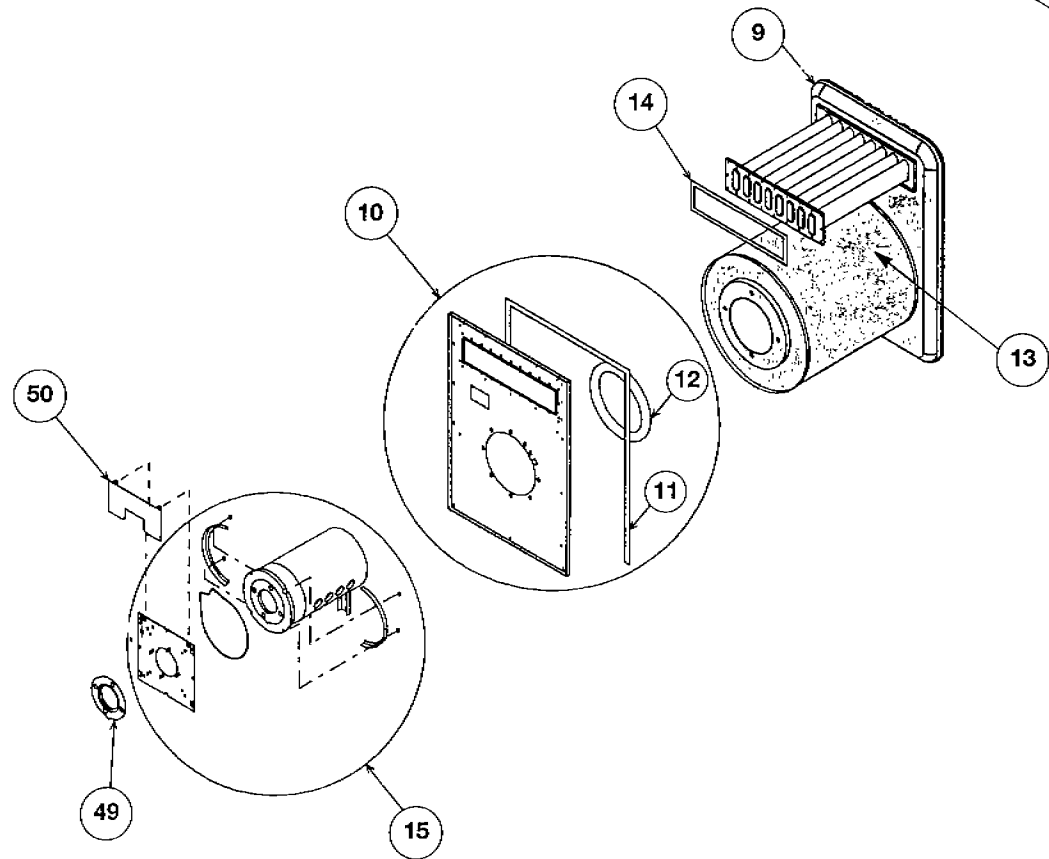
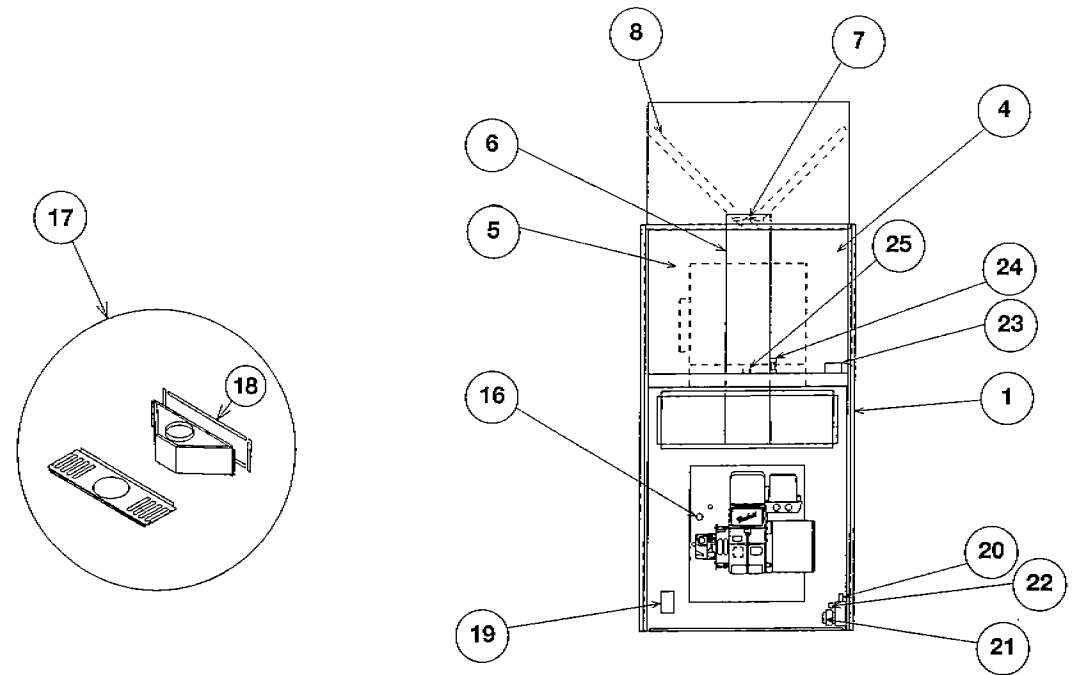
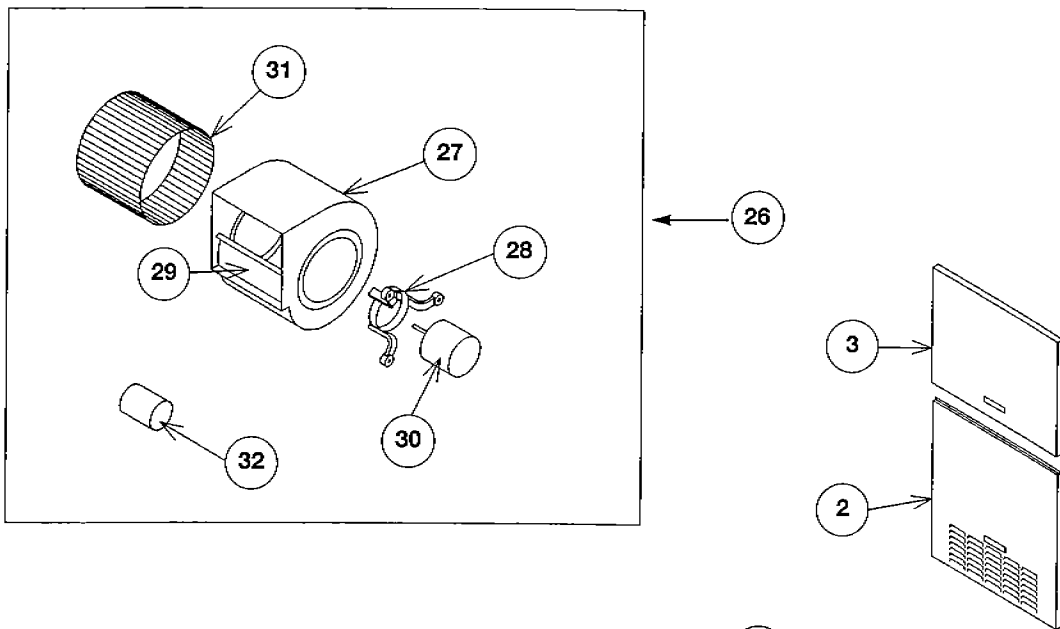
**SERIES C**

**SIZES 084 THRU 130**



FIRST PRODUCTION 6/90 PS  
THIS REVISION 10/94 PS

92-19301-51-01  
SUPERSEDES 92-19301-51-00



## TABLE OF CONTENTS

Notes	Page 2	Electric	Page 7
Model Number Explanation	Page 5	Blower Group	Page 7
Serial Number Explanation	Page 5	Oil Burner	Page 8
Panels S/M Parts	Page 6		
Miscellaneous	Page 6		
Heat Exchanger	Page 6		

## NOTE EXPLANATION

**When A Particular Color Is Required It Must Be Specified When Ordering.**

▶	Special Information, Please read carefully and follow applicable notes.
--	This part is not shown on the pictorial page.
<b>Alt</b>	Alternate part available in manufacturing this model.
<b>CNBOI</b>	This part "Can Not Be Ordered Individually", please order complete kit.
<b>CR</b>	This replacement part is equal to or better than the original equipment part and should be stocked in the field.
<b>NEW</b>	This is a new replacement part and should be stocked in the field.
<b>PHONE</b>	Coils, panels and other manufactured parts are available while this unit is in production. After this unit is out of production, ordering such parts must be cleared with the Parts Department as price and availability will vary. When a particular color is required, it must be specified when ordering.
<b>STOCK (STK)</b>	This part should be stocked in the field.

- 1 This is a "Hardware Store" item. Size and part number information is provided for reference only.
- 2 When ordering an Oil Burner for a 2 Stage Pump, order the Oil Burner with Honeywell Transformer and a 2 Stage Pump. The Oil Burner with Honeywell Transformer comes standard with a 1 Stage Pump, in order to make the repair the 1 stage pump will need to be replaced with 2 Stage Pump.
- 3 When ordering a Beckett Oil Burner With Phelon Controls it will be replaced with a Beckett Oil Burner with a Honeywell Transformer.
- 4 The Phelon Control parts will be replaced with a Honeywell Oil Ignitor Kit, part number 59-22949-01. The Honeywell Kit includes Transformer, Control, Cad Cell and misc. parts.
- 5 Some "A" Variation models used different burner parts, this kit was assembled to repair any combination of parts used on these models. This kit includes Air Tube, Oil Line & Electrode Assembly, Combustion Head, Heat Shield and Retainer Ring with Screws.

## MODEL NUMBER EXPLANATION

VERIFY THE VARIATION PORTION OF YOUR MODEL NUMBER BEFORE ORDERING UP REPAIR PARTS.

[-]   O   N   C   -   084   Q   B   E   A  
 (1)   (2)   (3)   (4)   (5)   (6)   (7)   (8)   (9)

(1) **TRADENAME IDENTIFICATION**

(2) O = Oil Furnace

(3) N = Downflow

(4) **DESIGN SERIES**

(5) **HEATING CAPACITY (OUTPUT)**

Model	Output BTU/HR
084	84,000
095	95,000
112	112,000
130	134,000

(6) **BLOWER DESIGNATION**

Q = 10 x 10 DD  
R = 11 x 10 DD

(7) **VARIATIONS**

A = Standard

B = 1st Variation

(8) **HEATING & COOLING DESIGNATION**

A = Heating Only

E = 1100 - 1330 CFM

J = 1800-2075 CFM

(9) **PUMP**

A = Single Stage (U.S. Models)

B = Two Stage (U.S. Models)

C = Single Stage (Canadian Models)

D = Two Stage (Canadian Models)

## SERIAL NUMBER EXPLANATION

A   N   1   7   4   M   4489   0000  
 (1)   (2)   (3)   (4)   (5)   (6)   (7, 8)   (9)

(1) **TYPE OF OIL BURNER:**

A - Single Stage Beckett AFG

B - 2 Stage Beckett AFG

(2) **PRIMARY CONTROL:**

K = Phelon 401400-01

N = Honeywell R8184G

(3) **FAN LIMIT CONTROL:**

1 - TOD 60T12-313160

(4) **HEATING ELEMENT:**

3 - Aluminized

6 - Aluminized and Stainless Steel

7 - Stainless Steel

(5) **MOTOR HORSEPOWER:**

2 - 1/2 HP Motor

4 - 1/4 HP Motor

7 - 3/4 HP Motor

(6) **PLANT:**

M = Milledgeville

(7) **WEEK**

(8) **YEAR**

(9) **PRODUCTION NUMBER:**

Starts with 0001 & Runs through 9999 and then starts with 0001 again.

N O	MODEL HEATING CAPACITY BLOWER DESIGNATION <b>VARIATION</b>	Note	[_]ONC- 084 [ ] <b>A</b>	[_]ONC- 084 [ ] <b>B</b>	[_]ONC- 095 / 112 [ ] <b>A</b>	[_]ONC- 095 / 112 [ ] <b>B</b>	[_]ONC- 130 [ ] <b>A</b>	[_]ONC- 130 [ ] <b>B</b>	
--------	---	------	-----------------------------------	-----------------------------------	---	---	-----------------------------------	-----------------------------------	--

## PANELS S/M PARTS

1	Jacket	Phone	AS-46511-01	AS-46511-01	AS-46511-01	AS-46511-01	AS-46511-02	AS-46511-02	
17	Top Plate/Collector Box Kit		<b>SEE HEAT EXCHANGER GROUP</b>						
2	Front Door	Phone	AS-63675-01	AS-63675-01	AS-63675-01	AS-63675-01	AS-63662-01	AS-63662-01	
3	Blower Door	Phone	AS-66955-04	AS-66955-04	AS-66955-04	AS-66955-04	AS-66955-05	AS-66955-05	
4	Blower Access Door	Phone	AS-46536-01	AS-46536-01	AS-46536-01	AS-46536-01	AS-46536-02	AS-46536-02	
5	Blower Compartment, Filler Panel	Phone	AE-46508-01	AE-46508-01	AE-46508-01	AE-46508-01	AE-46508-01	AE-46508-01	
6	Flue Extension Pipe - 5"	Phone	AE-66691-12	58-21505-03	AE-66691-12	58-21505-03	AE-66691-13	58-21505-04	

## MISCELLANEOUS .

7	Filter Frame	Phone	AE-66681-01	AE-66681-01	AE-66681-01	AE-66681-01	AE-66681-01	AE-66681-01
8	Filter -Permanent (2)	1	54-19655-24	54-19655-24	54-19655-24	54-19655-24	54-19655-25	54-19655-25

## HEAT EXCHANGER

### "A" VARIATION MODEL

**INSTRUCTIONS:**

- INSTRUCTIONS:**
1. **WHEN REPLACING AN "A" VARIATION MODEL HEAT EXCHANGER, SECONDARY HEAT EXCHANGER OR COMBUSTION CHAMBER USE THE FOLLOWING KIT. THIS KIT CONVERTS AN "A" VARIATION MODEL TO A "B" VARIATION MODEL. ONLY THE INDIVIDUAL PARTS LISTED CAN BE PURCHASED FOR AN "A" VARIATION MODEL.**  
**"CNBQI" - CAN NOT BE ORDERED INDIVIDUALLY FOR AN "A" VARIATION MODEL**
  2. **AFTER INSTALLATION OF THE HEAT EXCHANGER KIT, USE THE "B" VARIATION MODEL PORTIONS OF THIS PARTS LIST FOR INDIVIDUAL REPLACEMENT PARTS.**

LIST FOR INDIVIDUAL REPLACEMENT PARTS:							
HEAT EXCHANGER KIT <u>INCLUDES THE FOLLOWING:</u>		RXOH- AD24A		RXOH- AD24A		RXOH- AD28A	
Heating Exchanger,	CNBOI						
Center Panel,	CNBOI						
Heat Exch Face Gasket,	CNBOI						
Secondary Heat Exch.,	CNBOI						
Secondary Insul. Tape,	CNBOI						
Combustion Chamber,	CNBOI						
Chamber Foot,	CNBOI						
Comb. Mntg Ring(4),	CNBOI						
Burner Mounting Plate:	CNBOI						
Sight Glass Kit	CNBOI						
Control Limit,	CNBOI						
Oil Burner:	CNBOI						
Nozzle 70 Deg.	CNBOI						
Tube Assembly	CNBOI						
Blower Control,	CNBOI						
Junction Box Cover,	CNBOI						
Bracket Support	CNBOI						

### "B" VARIATION MODEL

B VARIATION MODEL								
9	Heat Exchanger	Phone		AS-46557-04		AS-46557-04		AS-46557-05
10	Center Panel Kit Including:	Phone		AS-46530-84		AS-46530-84		AS-46530-85
11	Center Panel Gasket Tape	Phone		68-21502-01		68-21502-01		68-21502-01
12	Heat Exch Face Gasket	Phone		68-22950-02		68-22950-02		68-22950-03
13	Secondary Heat Exchanger	Phone		AS-46522-04		AS-46522-04		AS-46522-03
--	Secondary Insulation Tape - (between heat exchanger and secondary heat exchanger)	Phone		68-21812-04		68-21812-04		68-21812-04
14	Secondary Insulation Tape - (between secondary heat exchanger and center panel)	Phone		68-21812-04		68-21812-04		68-21812-04
15	Combustion Chamber / Burner Mounting Plate	Phone		AS-46531-09		AS-46531-09		AS-46531-10
16	Sight Glass Kit	Phone		AS-56507-01		AS-56507-01		AS-56507-01

### "A" AND "B" VARIATION MODEL

17	Top Plate / Collector Box Kit	Phone	AS-46546-85	AS-46546-85	AS-46546-85	AS-46546-85	AS-46546-83	AS-46546-83
18	Collector Box Gasket - 48"	Phone	68-21812-03	68-21812-03	68-21812-03	68-21812-03	68-21812-03	68-21812-03

N O	MODEL HEATING CAPACITY BLOWER DESIGNATION <b>VARIATION</b>	Note	[_]ONC- 084 [-] <b>A</b>	[_]ONC- 084 [-] <b>B</b>	[_]ONC- 095 / 112 [-] <b>A</b>	[_]ONC- 095 / 112 [-] <b>B</b>	[_]ONC- 130 [-] <b>A</b>	[_]ONC- 130 [-] <b>B</b>	
--------	---	------	-----------------------------------	-----------------------------------	---	---	-----------------------------------	-----------------------------------	--

**ELECTRIC**

			For "A" Variation Models some of the replacement parts are not the same as the original part. The current replacement part is equal to or better than the original equipment part.						
19	Limit Control	New	47-21711-18	47-21711-17	47-21711-17	47-21711-19	47-21711-17	47-21711-17	
--	Limit Gasket	Phone	68-18724-02	68-18724-02	68-18724-02	68-18724-02	68-18724-02	68-18724-02	
20	Isolation Relay	Stock	42-22444-03	42-22444-03	42-22444-03	42-22444-03	42-22444-03	42-22444-03	
21	Transformer for Heat Models Only	CR	46-19617-84	46-19617-84	46-19617-84	46-19617-84	46-19617-84	46-19617-84	
21	Fan Center Less Relay	Stock	47-19807-04	47-19807-04	47-19807-04	47-19807-04	47-19807-04	47-19807-04	
22	Relay - For Fan Center	Stock	42-19423-01	42-19423-01	42-19423-01	42-19423-01	42-19423-01	42-19423-01	
23	Fan Cycle Control	CR	47-22896-01	47-22896-01	47-22896-01	47-22896-01	47-22896-01	47-22896-01	
24	Blower Door Switch	CR	42-21268-84	42-21268-84	42-21268-84	42-21268-84	42-21268-84	42-21268-84	
25	Reverse Flow Limit	Stock	47-22906-02	47-22906-02	47-22906-02	47-22906-02	47-22906-02	47-22906-02	

N O	MODEL HEATING CAPACITY BLOWER DESIGNATION <b>VARIATION</b> HT & CL DESIGNATION	Note	[_]ONC- 084 Q <b>A OR B</b> A OR E	[_]ONC- 095 / 112 Q <b>A OR B</b> A, E OR G	[_]ONC- 130 R <b>A OR B</b> A	[_]ONC- 130 R <b>A OR B</b> J			
--------	--	------	--	---	---	---	--	--	--

**BLOWER GROUP**

26	Blower Assembly Including:	Phone	AS-66823-28	AS-66823-27	AS-66823-30	AS-66823-31			
27	Housing	Phone	AS-61213-01	AS-61213-01	AS-66877-02	AS-66877-02			
28	Mounting Bracket	Phone	AS-53148-03	AS-53148-03	AS-53148-01	AS-53148-01			
29	Cut-off	Phone	AE-64401-05	AE-64401-05	AE-64401-05	AE-64401-05			
30	Motor:								
	1/2 HP, 115 Volt, 3 Speed	CR		51-23012-31	51-23012-31				
	1/2 HP, 115 Volt, 4 Speed	CR	51-23012-41						
	3/4 HP, 115 Volt, 4 Speed	Stock				51-23017-41			
31	Wheel:								
	10 x 10 x 1/2, CW	CR	70-18629-01	70-18629-01					
	11 x 10 x 1/2, CW	Stock			70-20602-01	70-20602-01			
32	Capacitor:								
	7.5 / 370 MFD/Voltage	CR	43-20847-11	43-20847-11	43-20847-11				
	12.5 / 370 MFD/Voltage	Stock				43-20847-38			

N O	MODEL	Note	[-]ONC- 084 / 094 / 112	[-]ONC- 084 / 094 / 112	[-]ONC- 130	[-]ONC- 130			
	HEATING CAPACITY								
	BLOWER DESIGNATION		[-]	[-]	[-]	[-]			
	<b>VARIATION</b>		<b>A</b>	<b>B</b>	<b>A</b>	<b>B</b>			

## BECKETT OIL BURNER ASSEMBLIES AND REPLACEMENT PARTS

**PHELON CONTROLS****DIFFERENT BURNER ASSEMBLIES WITH PHELON CONTROLS WERE USED ON THESE MODELS.**

When repair parts are ordered both the Phelon Controls and Ignitor will be replace with HONEYWELL'S RETROFIT CONTROL KIT part number 59-22949-01. The retrofit kit includes the Control, Ignitor and Cad Cell.

**Note:** Only the Phelon Cad Cell is replaced by a Phelon Cad Cell. After the Phelon Control has been retrofitted to a Honeywell system, the Honeywell repair parts should be used.

33	OIL BURNER WITH PHELON IGNITOR	2, 3	59-22660-02	DNA	59-22660-03	DNA			
34	Phelon Ignitor	4	59-21810-01	DNA	59-21810-01	DNA			
35	Primary Control And Base	4	59-21810-02	DNA	59-21810-02	DNA			
--	Cad Cell With Base	Stock	59-21810-03	DNA	59-21810-03	DNA			

**HONEYWELL CONTROLS**

33	OIL BURNER WITH HONEYWELL TRANSFORMER	New,2	59-22660-05	59-22660-12	59-22660-06	59-22660-13			
36	Honeywell Transformer	Stock	59-22773-01	59-22773-01	59-22773-01	59-22773-01			
37	Honeywell Primary Control	Stock	42-22770-01	42-22770-01	42-22770-01	42-22770-01			
--	Honeywell Cad Cell	Stock	42-22771-01	42-22771-01	42-22771-01	42-22771-01			

**THE REPLACEMENT PARTS LISTED BELOW (ITEMS 38 THROUGH 50)  
CAN BE USED TO REPAIR ANY BURNER ASSEMBLY LISTED ABOVE.**

38	Oil Line Electrode Assembly	New		59-25009-02		59-25009-03			
39	Air Tube, Nozzle Line And Electrode Kit	5	59-24065-02		59-24065-03				
40	Nozzle:								
	Heating Capacity 084	New	59-22709-03	59-22709-03					
	Heating Capacity 095	New	59-22709-04	59-22709-04					
	Heating Capacity 112	New	59-22709-05	59-22709-05					
	Heating Capacity 130	New			59-22709-06	59-22709-06			
41	Air Tube	New		59-21810-10		59-21810-10			
42	Combustion Head	New		59-25013-01		59-25014-01			
43	Heat Shield - Ceramic	New	59-22660-60	59-22660-60	59-22660-60	59-22660-60			
44	Retainer Ring	New	59-25015-01	59-25015-01	59-25015-01	59-25015-01			
45	Motor 1/7 HP, 3450 RPM, 115 V.	Stock	59-19206-28	59-19206-28	59-19206-28	59-19206-28			
46	Pump:								
	1 Stage	Stock	59-17936-30	59-17936-30	59-17936-30	59-17936-30			
	2 Stage	Stock	59-17047-04	59-17047-04	59-17047-04	59-17047-04			
--	Connector Tube Assembly	Stock	59-19206-18	59-19206-18	59-19206-18	59-19206-18			
47	Blower Wheel 4 1/4 x 2 7/16	Stock	59-21810-05	59-21810-05	59-21810-05	59-21810-05			
48	Coupling	Stock	59-25011-01	59-25011-01	59-25011-01	59-25011-01			
49	Gasket	Stock	68-19083-01	68-19083-01	68-19083-01	68-19083-01			
50	Burner Heat Shield	Phone	AE-46534-02	AE-46534-02	AE-46534-03	AE-46534-03			