

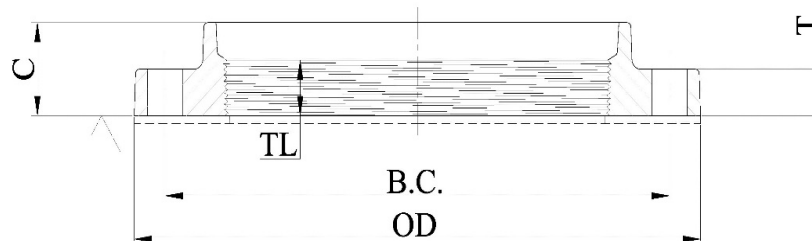
DOMESTIC

NON-DOMESTIC

SUBMITTAL: COMPANION FLANGE C110 PRODUCT

(Current revisions for the noted Standards apply)

SIZES:	2" through 64" (Contact Tyler Union for 54" – 64" Flange fitting information)
STANDARDS:	ANSI/AWWA C110/A21.10, NFPA 13/24, ASME B16.1, ANSI/AWWA C115/A21.15
MATERIAL:	Cast of ASTM A536 qualified ductile iron. Date code is cast on and required for traceability.
PRESSURE RATING:	*Flanged fittings *2" – 48" rated at 250 psi. 54" – 64" rated at 150psi.
DEFLECTION:	Deflection is "not" recommended for flange joint due to the rigidity of the joint.
COATING:	Asphaltic or Primer per ANSI/AWWA C104/A21.4, Standard primer is Tnemec Pota Pox 140N-1211. Contact Tyler Union for additional coating options.
BARE FITTINGS:	Available upon request.
THREADS:	Tapered Pipe Threads as per NPT ANSI B1.20.1. Available for Ductile Pipe as well as Steel Pipe
FLANGES:	ANSI Class 125 per ASME B16.1 and ANSI/AWWA C111/A21.11. Bolt holes shall straddle the center line NOTE: Please specify pipe type upon order placement NOTE: Class 125 ASME B16.1 are not compatible with Class 250 Flanges NOTE: Class 250 ASME B16.1 fittings are available upon request
INSTALLATION:	Install per AWWA C600/C651 using pipe conforming to ANSI/AWWA C151/A21.51.



COMPANION FLANGE DETAILS IN INCHES

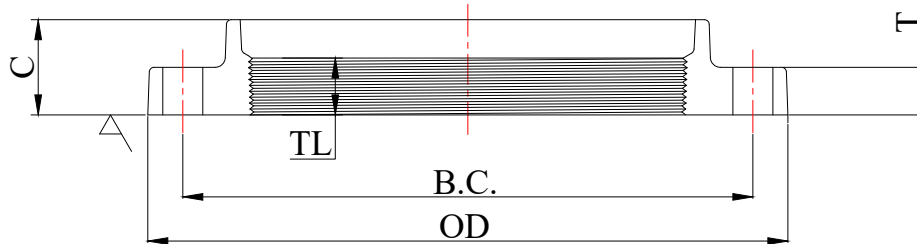
BOLTS

Size Inches	Diameter DI Pipe	Flange O.D.	Bolt Circle Diameter	Flange Thickness "T"	Flange Height "C"	Thread Length "TL"	Bolt Hole Diameter	Size	Qty.
2	2.51	6.00	4.75	0.62	1.25	1.060	0.750	5/8 x 2.25	4
3	3.96	7.50	6.00	0.75	1.75	1.060	0.750	5/8 x 2.25	4
4	4.80	9.00	7.50	0.94	1.87	1.190	0.750	5/8 x 3.00	8
6	6.90	11.00	9.50	1.00	2.06	1.380	0.875	3/4 x 3.50	8
8	9.05	13.50	11.75	1.12	2.30	1.560	0.875	3/4 x 3.50	8
10	11.10	16.00	14.25	1.19	2.50	1.750	1.000	7/8 x 4.00	12
12	13.20	19.00	17.00	1.25	2.62	2.000	1.000	7/8 x 4.00	12
14	15.30	21.00	18.75	1.38	2.70	2.010	1.125	1 x 4.50	12
16	17.40	23.50	21.25	1.44	2.70	2.250	1.125	1 x 4.50	16
18	19.50	25.00	22.75	1.56	2.82	2.450	1.250	1-1/8 x 5.00	16
20	21.60	27.50	25.00	1.69	2.93	2.620	1.250	1-1/8 x 5.00	20
24	25.80	32.00	29.50	1.88	3.17	2.960	1.375	1-1/4 x 5.50	20
30	32.00	38.75	36.00	2.12	4.00	3.370	1.375	1-1/4 x 5.50	28
36	38.30	46.00	42.75	2.38	5.00	4.000	1.625	1-1/2 x 7.00	32
42	44.50	53.00	49.50	2.62	5.12	4.500	1.625	1-1/2 x 7.50	36
48	50.80	59.50	56.00	2.75	5.50	5.120	1.625	1-1/2 x 8.00	44
54	Available on Request								
60	Available on Request								
64	Available on Request								

26U – ANSI/AWWA C110/A21.10 COMPANION/ THREADED FLANGE DUCTILE IRON FITTINGS

Revised 2/2017 (Current revisions for the noted Standards apply)

SIZES:	2"–64"
STANDARDS:	ANSI/AWWA C110/A21.10, NFPA 13/24, ASME B16.1, ANSI/AWWA C115/A21.15.
MATERIAL:	Cast of ASTM A536 qualified ductile iron. Date code is cast on and required for traceability.
PRESSURE RATING:	Flanged fittings *2"–48" rated at 250 psi. 54"–64" rated at 150psi.
DEFLECTION:	Deflection is not recommended for flange joint due to the rigidity of the joint.
COATING:	Asphaltic or Primer per ANSI/AWWA C104/A21.4, Standard primer is Tnemec Pota Pox N140-1211. Contact Tyler Union for additional coating options.
BARE FITTINGS:	Available upon request.
THREADS:	Tapered Pipe Threads as per NPT ANSI B1.20.1. Available for Ductile Pipe as well as Steel Pipe. NOTE: Please specify pipe type upon order placement.
FLANGES:	ANSI Class 125 per ASME B16.1 and ANSI/AWWA C111/A21.11. Bolt holes shall straddle the center line. NOTE: Class 125 ASME B16.1 are not compatible with Class 250 Flanges. NOTE: Class 250 ASME B16.1 fittings are available upon request.
INSTALLATION:	Install per AWWA C600/C651 using pipe conforming to ANSI/AWWA C151/A21.51.



COMPANION FLANGE DETAILS IN INCHES									
Size (In.)	Diameter DI Pipe	Flange O.D.	B.C. Diameter	Flange Thickness T	Flange Height C	Thread Length TL	Bolt Hole Diameter	Bolt Size	Qty. Bolts
2	2.51	6.00	4.75	0.62	1.25	1.06	0.75	5/8 x 2-1/4	4
3	3.96	7.50	6.00	0.75	1.75	1.06	0.75	5/8 x 2-1/4	4
4	4.80	9.00	7.50	0.94	1.87	1.19	0.75	5/8 x 3	8
6	6.90	11.00	9.50	1.00	2.06	1.38	0.875	3/4 x 3-1/2	8
8	9.05	13.50	11.75	1.12	2.30	1.56	0.875	3/4 x 3-1/2	8
10	11.10	16.00	14.25	1.19	2.50	1.75	1.00	7/8 x 4	12
12	13.20	19.00	17.00	1.25	2.62	2.00	1.00	7/8 x 4	12
14	15.30	21.00	18.75	1.38	2.70	2.01	1.125	1 x 4-1/2	12
16	17.40	23.50	21.25	1.44	2.70	2.25	1.125	1 x 4-1/2	16
18	19.50	25.00	22.75	1.56	2.82	2.45	1.25	1-1/8 x 5	16
20	21.60	27.50	25.00	1.69	2.93	2.62	1.25	1-1/8 x 5	20
24	25.80	32.00	29.50	1.88	3.17	2.96	1.375	1-1/4 x 5-1/2	20
30	32.00	38.75	36.00	2.12	4.00	3.37	1.375	1-1/4 x 5-1/2	28
36	38.30	46.00	42.75	2.38	5.00	4.00	1.625	1-1/2 x 7	32
42	44.50	53.00	49.50	2.62	5.12	4.50	1.625	1-1/2 x 7-1/2	36
48	50.80	59.50	56.00	2.75	5.50	5.12	1.625	1-1/2 x 8	44
54	57.56	66.25	62.75	3.00	7.16	6.18	2.00	1-3/4 x 8-1/2	44
60	61.61	73.00	69.25	3.12	7.16	6.18	2.00	1-3/4 x 9	52
64	65.67	80.00	76.00	3.38	7.16	6.18	2.00	1-3/4 x 9	52