

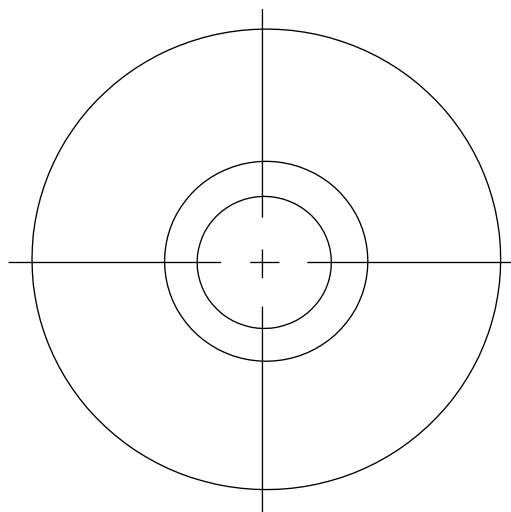
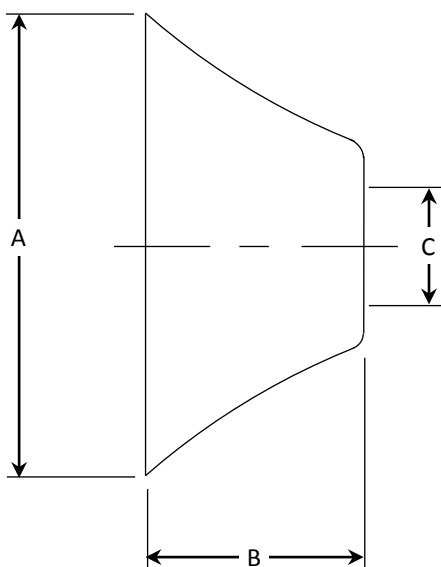
## For Residential and Commercial Applications

Job Name		Engineer / Architect	
Job Location		Wholesaler	
Submittal Date		Contractor	

### 650 / 651 / 652 / 654 / 657 Chrome-Plated Bell Flange

**Design Features:**

- **Attractively conceals** holes in the floor or wall after rough-ins
- **Easy to install**
- **Internal tabs secure flange** to various tubing: copper, steel, CPVC, and PEX



#### CONNECTOR MATERIAL SPECIFICATIONS

<b>Flange</b>	Steel, chrome-plated
---------------	----------------------

#### PART DIMENSIONS (Inches)

Model	DIA. A	DIM. B	DIA. C
650 C	2.40	1.12	.69
651 C	2.40	1.12	.84
652 C	2.40	1.12	.38
654 C	2.40	1.12	.63
657 C	2.40	1.12	.56

**Part Listing:**

<input type="checkbox"/> 650 C	Bell flange fits over 3/8" iron pipe (.69 ID), chrome-plated
<input type="checkbox"/> 651 C	Bell flange fits over 1/2" iron pipe (.84 ID), chrome-plated
<input type="checkbox"/> 652 C	Bell flange fits over 3/8" OD tube (1/4" nom), chrome-plated
<input type="checkbox"/> 654 C	Bell flange fits over 5/8" OD tube (1/2" nom), chrome-plated
<input type="checkbox"/> 657 C	Bell flange fits over 9/16" OD tube (.56 ID), chrome-plated

*This specification and all information contained herein is the confidential and exclusive property of BrassCraft Manufacturing, and shall not be disclosed to others without the written consent of BrassCraft Mfg. This specification must be returned to BrassCraft Mfg if requested.*

**BrassCraft®**