

SPECIFICATIONS

**FIGURE 470 – 475**  
BRASS BODY BALL VALVES



2-PC FULL PORT 400 WOG PUMP ISOLATION VALVE

The FNW Figure 470 (NPT connection) and 475 (sweat end connection) pump isolation valve decreases installation time and the number of possible leak paths by its integral pump flange connection. Pump isolation valves make pump servicing easier by isolating the pump and providing ease of disconnect for pump removal.

FEATURES

- 400 WOG
- Full port
- Flanged pump connection by:
  - Threaded end (Figure 470)
  - Sweat end (Figure 475)
- Solid integral pump-side flange
- Blow-out proof stem
- Adjustable packing
- Forged brass body & end cap
- Includes T-handle, gasket and hardware



NOT RECOMMENDED FOR BURIED SERVICE

WEIGHT (LBS)

Size (in.)	470	475
3/4	1.72	1.71
1	1.82	1.77
1-1/4	2.08	2.08
1-1/2	2.60	2.66

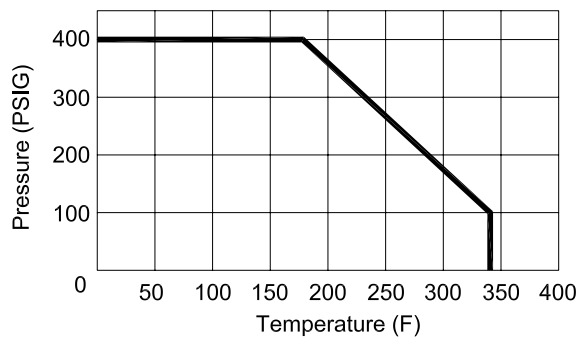
ACCESSORIES/OPTIONS



Figure 470 - Threaded End



Figure 475 - Sweat End



T-Handle, Gasket, & Hardware Included

SPECIFICATIONS

**FIGURE 470 – 475**  
BRASS BODY BALL VALVES



2-PC FULL PORT 400 WOG PUMP ISOLATION VALVE

FIGURE NUMBER MATRIX

FNW 470/475	
END TYPE	SIZE CODE (IN.)
FNPT = 470	3/4 = F
Sweat Ends = 475	1 = G
	1-1/4 = H
	1-1/2 = J

Replacement gasket = FNWPIVGFJ

REFERENCE CHART

Size (in.)	Dimensions (in.)														
	ØB	ØD	ØD2	Threaded Dimensions	E	ØG	H	L		L1	L2	L3	ØN	R	T2
								470	475						
3/4	3.15	0.748	0.878	3/4" - 14 NPT	4.331	2.756	2.382	2.421	2.618	1.22	0.75	1.22	0.492	0.453	0.394
1	3.15	0.984	1.126	1" - 11-1/2 NPT	4.331	2.756	2.559	2.815	3.071	1.378	0.87	1.38	0.492	0.453	0.394
1-1/4	3.15	1.142	1.378	1-1/4" - 11-1/2 NPT	4.331	2.756	2.717	3.09	3.543	1.535	1.10	1.54	0.492	0.453	0.394
1-1/2	3.15	1.457	1.628	1-1/2" - 11-1/2 NPT	4.331	2.756	2.913	3.465	3.917	1.732	1.10	1.73	0.492	0.453	0.394

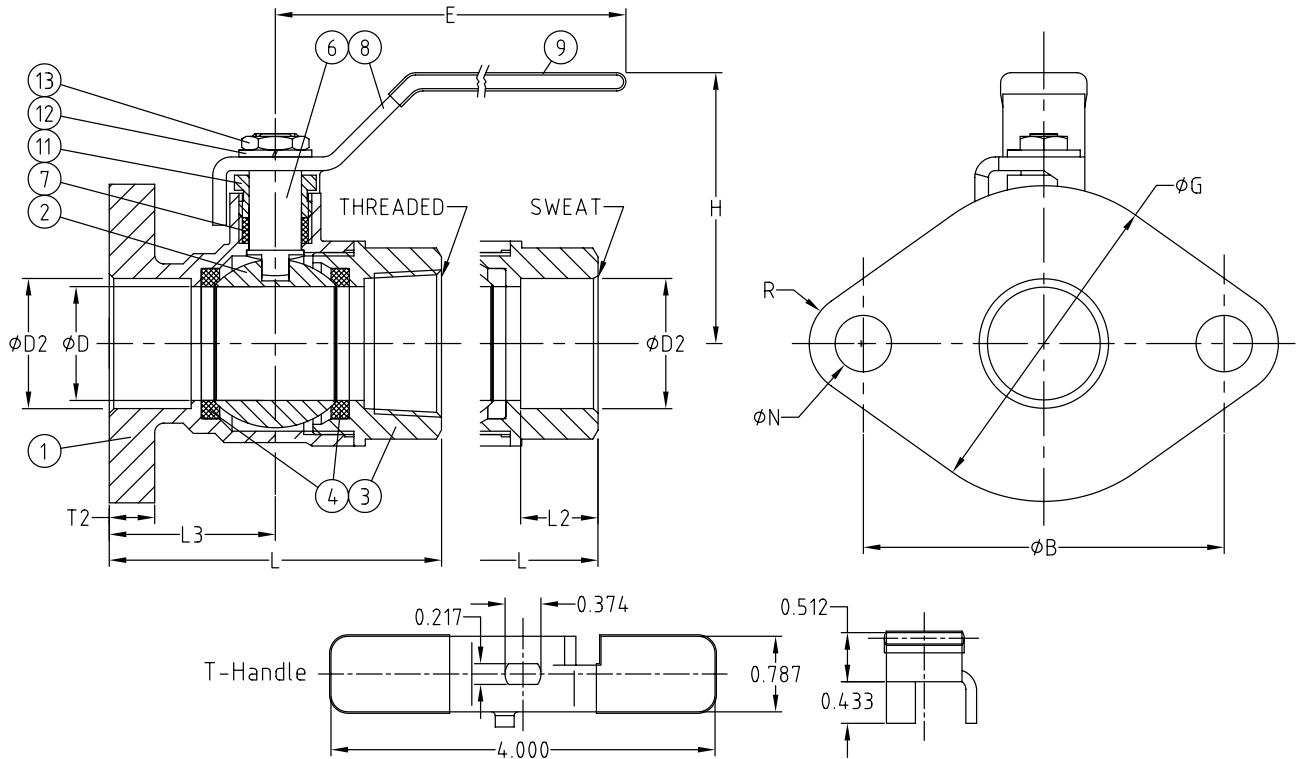
PARTS BREAKDOWN

**FIGURE 470 – 475**  
BRASS BODY BALL VALVES



2-PC FULL PORT 400 WOG PUMP ISOLATION VALVE

PARTS DIAGRAM



PART MATERIALS & QUANTITY

Ref #	Description	Material	Qty	Ref #	Description	Material	Qty
1	Body	Brass - C37700	1	11	Gland Nut	Brass - C36000	1
2	Ball	Brass - C37700	1	12	Handle Washer	ASTM G1566	1
3	End Cap	Brass - C37700	1	13	Handle Nut	Steel - AISI-1010	1
4	Seat	PTFE	2	14*	Flange Bolt	Steel - AISI-1010	2
6	Stem	Brass - C36000	1	15*	Flange Nut	Steel - AISI-1010	2
7	Stem Packing	PTFE	1	16*	Flange Gasket	Rubber - NBR	1
8	Handle	Steel - AISI-1010	1	17	T-Handle	Steel - AISI-1010	1
9	Handle Cover	Plastic	1				

\*Not shown in drawing