

PFETP Series

Economy Test Plug

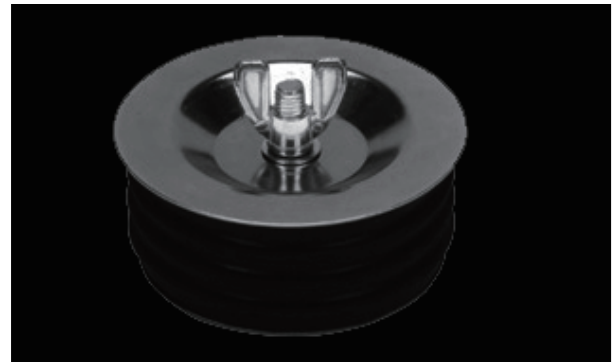


Product Features

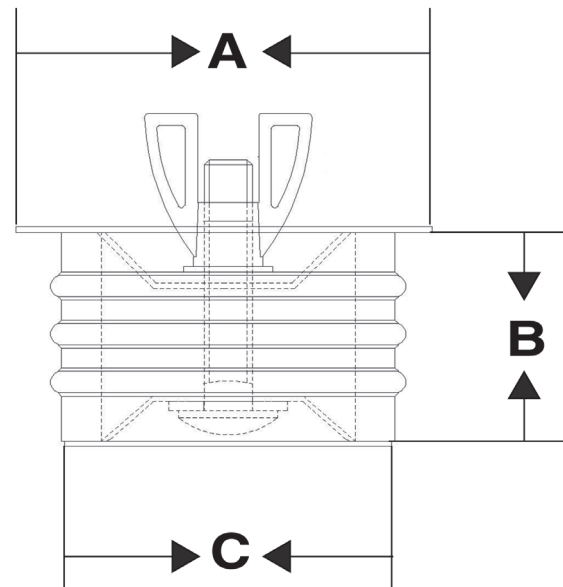
- Fits cast iron and plastic pipes
- Wing nut design
- Molded rubber gasket
- Zinc Plating steel flange

Model Numbers

| | |
|--------|----------------------|
| PFETPJ | 1-1/2 ECON TEST PLUG |
| PFETPK | 2 ECON TEST PLUG |
| PFETPM | 3 ECON TEST PLUG |
| PFETPP | 4 ECON TEST PLUG |



PFETPM



Product Specifications

| Model Number | Description | Flange Diameter (A) | Plug Height (B) | Pipe Diameter (C) |
|--------------|----------------------|---------------------|-----------------|-------------------|
| PFETPJ | 1-1/2 ECON TEST PLUG | 2.04" | 1.05" | 1.10" |
| PFETPK | 2 ECON TEST PLUG | 2.24" | 1.11" | 1.10" |
| PFETPM | 3 ECON TEST PLUG | 3.22" | 1.65" | 2.59" |
| PFETPP | 4 ECON TEST PLUG | 4.27" | 1.65" | 3.68" |

Warranty and Codes

This PROFLO product carries a 1-year limited warranty.

Distributed Exclusively by Ferguson and Wolseley Canada