

MODEL 375A and 375



Reduced Pressure Principle – Backflow Preventers 375A (2-1/2" to 10") and 375 (4" to 10")

Repair Kit Components		2-1/2" - 4"						2-1/2 - 6"		4"		6"				8"		8" and 10"				10"	
Size Range		RK212-RV375A-HOSE	RK4-350	RK4-375CK1	RK4-350CK2	BRK4-LBF-SEAT1RTNR	BRK4-LBF-SEAT2RTNR	RK212-RV-ASSY	4-BK	6-BK	RK6-350	RK6-375CK1	RK6-350CK2	BRK6-LBF-SEAT1RTNR	BRK6-LBF-SEAT2RTNR	RK6-RV375A-HOSE	8-BK	RK8-350	RK8-375CK1	RK8-350CK2	RK8-RV375A-HOSE	RK8-RV-ASSY	10-BK
2-1/2"		•	•	•	•	•	•	•															
3"		•	•	•	•	•	•	•	•														
4"		•	•	•	•	•	•	•															
6"								•		•	•	•	•	•	•	•							
8"																	•	•	•	•	•	•	•
10"																		•	•	•	•	•	•

Item #	Item Description																							
1	Bolt, Flange																							•(x24)
2	Nut, Flange																							•(x24)
3	Gasket, Flange																							•(x2)
4	O-Ring, Relief Valve							•																•
5	Relief Valve Assembly							•																•
6	Bolt, Relief Valve							•(x2)																•(x2)
7	Seat Retainer #1			•		•(x6)						•		•(x6)						•(x4)	•(x7)			
8	Seat Retainer #2					•(x2)		•(x12)																
9	O-Ring, Seat		•(x2)		•						•(x2)	•	•						•(x2)					
10	Bolt, Poppet Retainer			•(x4)	•(x4)							•(x4)	•(x4)						•(x6)	•(x6)				
11	Handle, #1 Poppet Assembly			•								•	•											
12	Washer, Poppet Bolt			•(x4)	•(x4)							•(x4)	•(x4)							•(x6)	•(x6)			
13	O-Ring, Poppet Bolt		•(x8)	•(x4)	•(x4)						•(x8)	•(x4)	•(x4)						•(x12)	•(x6)	•(x6)			
14	Poppet Retainer			•	•							•	•							•	•			
15	Seal Ring		•(x2)	•	•						•(x2)	•	•						•(x2)	•	•			
16	Seat Assembly, #1 Poppet			•								•								•				
17	Seat Assembly, #2 Poppet					•							•								•			
18	Sensing Tube Fitting	•						•														•	•	
19	Pitot Tube Assembly	•																				•	•	
20	Sensing Tube	•																				•	•	
21	Washer, Seat Retainer																			•(x4)	•(x7)			

Whole Goods (Available for individual sale)							
Item #	Item Description	2-1/2"	3"	4"	6"	8"	10"
22	Gate Valve, NRS (FxF)	212-48	3-48	4-48	6-48	8-48	10-48
	Gate Valve, NRS (GxG)	212-48G	3-48G	4-48G	6-48G	8-48G	10-48G
	Gate Valve, NRS (GxF)	212-48GXF	3-48GXF	4-48GXF	6-48GXF	8-48GXF	10-48GXF
	Gate Valve, OS&Y (FxF)	212-48OSY	3-48OSYG	4-48OSY	6-48OSY	8-48OSY	10-48OSY
	Gate Valve, OS&Y (GxG)	212-48OSYG	3-48OSYG	4-48OSYG	6-48OSYG	8-48OSYG	10-48OSYG
	Gate Valve, OS&Y (GxF)	212-48OSYGXF	3-48OSYGXF	4-48OSYGXF	6-48OSYGXF	8-48OSYGXF	10-48OSYGXF
	Butterfly Valve (GxG)	212-49G	3-49G	4-49G	6-49G	8-49G	10-49G
	Butterfly Valve (GxF)	212-49GXF	3-49GXF	4-49GXF	6-49GXF	8-49GXF	10-49GXF
23	Ball Valve, FxF		12-850XL			34-850XL	
24	Ball Valve, MxF		12-850MXL			34-850MXL	
25	Cover Retainer Assembly		6-23		8-23		12-23
26	Grooved Coupling	4X212-23	4X3-23	4-23	6-23	8-23	10-23
27	Bulkhead Fitting		BHFICXL-100			BHF2BXL-100	
28	Sensing Line Bulkhead Fitting		BHFIBXL-100			BHF2CXL-100	
29	Cover		RK4-LBF-VALVE-COVER		RK6-LBF-VALVE-COVER		RK8-LBF-VALVE-COVER

Item No.	Repair Kit Description
2-1/2" - 4"	
RK212-RV375A-HOSE	Braided Hose Kit, 2-1/2" - 4" 375A RV
RK4-350	Standard Repair Kit, 2-1/2" - 4" 375A
RK4-375CK1	#1 Check Assembly Repair Kit, 2-1/2" - 4" 375A
RK4-350CK2	#2 Check Assembly Repair Kit, 2-1/2" - 4" 375A
BRK4-LBF-SEAT1RTNR	Bulk #1 Seat Retainer Repair Kit, 2-1/2" - 4" 375A
BRK4-LBF-SEAT2RTNR	Bulk #2 Seat Retainer Repair Kit, 2-1/2" - 4" 375A
2-1/2" - 6"	
RK212-RV-ASSY	Relief Valve Assembly Repair Kit, 2-1/2" - 6" 375A

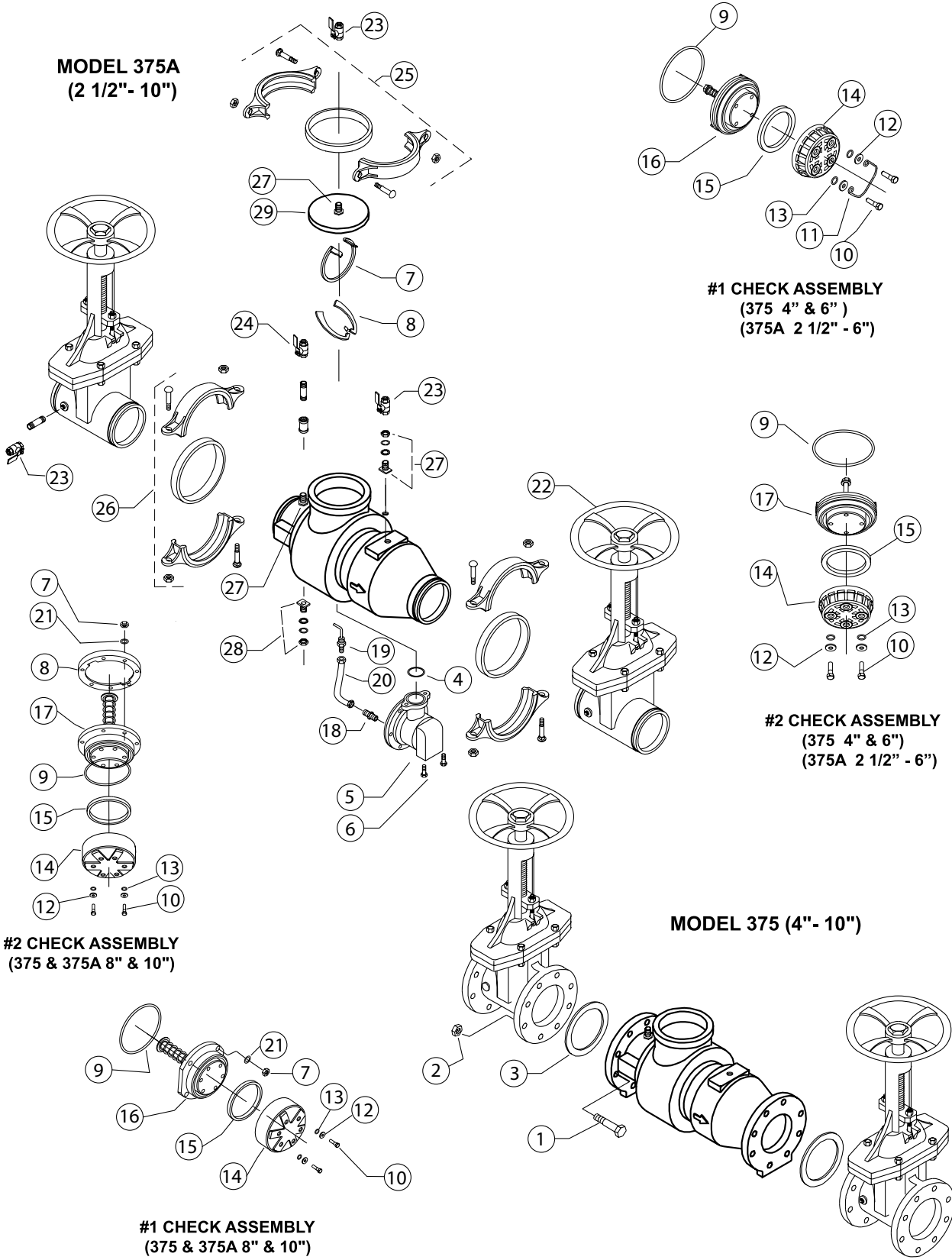
Item No.	Repair Kit Description
4"	
4-BK	Flanged Kit, 4"
6"	
6-BK	Flanged Kit, 6"
RK6-350	Standard Repair Kit, 6" 375A
RK6-375CK1	#1 Check Assembly Repair Kit, 6" 375A
RK6-350CK2	#2 Check Assembly Repair Kit, 6" 375A
BRK6-LBF-SEAT1RTNR	Bulk #1 Seat Retainer Repair Kit, 6" 375A
BRK6-LBF-SEAT2RTNR	Bulk #2 Seat Retainer Repair Kit, 6" 375A
RK6-RV375A-HOSE	Braided Hose Kit, 6" 375A RV

Item No.	Repair Kit Description
8"	
8-BK	Flanged Kit, 8"
8 - 10"	
RK8-350	Standard Repair Kit, 8" and 10" 375A
RK8-375CK1	#1 Check Assembly Repair Kit, 8" and 10" 375A
RK8-350CK2	#2 Check Assembly Repair Kit, 8" and 10" 375A
RK8-RV375A-HOSE	Braided Hose Kit, 8" and 10" 375A Relief Valve
RK8-RV-ASSY	Relief Valve Assembly Repair Kit, 8" and 10" 375A
10"	
10-BK	Flanged Kit, 10"

MODEL 375A and 375

Reduced Pressure Principle – Backflow Preventers 375A (2-1/2" to 10") and 375 (4" to 10")

Parts Drawing



MODEL 375A
(2 1/2" - 10")

#1 CHECK ASSEMBLY
(375 4" & 6")
(375A 2 1/2" - 6")

#2 CHECK ASSEMBLY
(375 4" & 6")
(375A 2 1/2" - 6")

#2 CHECK ASSEMBLY
(375 & 375A 8" & 10")

MODEL 375 (4" - 10")

#1 CHECK ASSEMBLY
(375 & 375A 8" & 10")