

1603BFST – ACCESSIBLE SHOWERS

inches (mm)

Interior: 60 x 34 x 74 $\frac{7}{8}$ (1525 x 865 x 1900)

Exterior: 62 x 36 $\frac{1}{4}$ x 76 $\frac{7}{8}$ (1575 x 920 x 1955)

Fax on Demand #6034

The 1603BFST roll-in shower features innovative installation design, including an engineered leveled base and improved front threshold. A true time and money saver, our pre-leveled base lets you install directly on a **level** floor. And its front threshold is engineered to keep a constant level without the use of brackets during installation.



AQUATIC ADVANTAGE

- National distribution
- 5 manufacturing facilities
- Private fleet
- Centralized customer service
- Field support
- 24-hour fax-on-demand

COLOR & TRIM OPTIONS

Stock	Premium
Almond	Black
Biscuit	Mexican Sand
Bone	Sandbar
Linen	
Sterling Silver	
White	

**Additional custom colors available.
(Contact Customer Service)

FEATURES

- Pre-leveled base
- Gelcoat surface
- $\frac{3}{4}$ " (20 mm) skirt
- No threshold
- Barrier free when properly installed
- Smooth tile
- Center drain
- 5-year limited warranty

OPTIONS

- Grab bars
- Fold-up seat
- Hand-held shower assembly with slide bar
- Pressure balancing mixing valve
- Soap dish
- Curtain rod and/or shower curtain

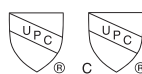
CODE COMPLIANCE

- ADA
- FHA
- ICC/ANSI A117.1
- HUD UM73a
- TAS
- ANSI Z124.1.2
- CAN/CSA-B651-04
- CAN/CSA-B45-02

**Code compliant when fully equipped and installed according to guidelines.

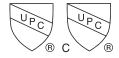


Aquatic products may be
specified as Lasco Bathware.

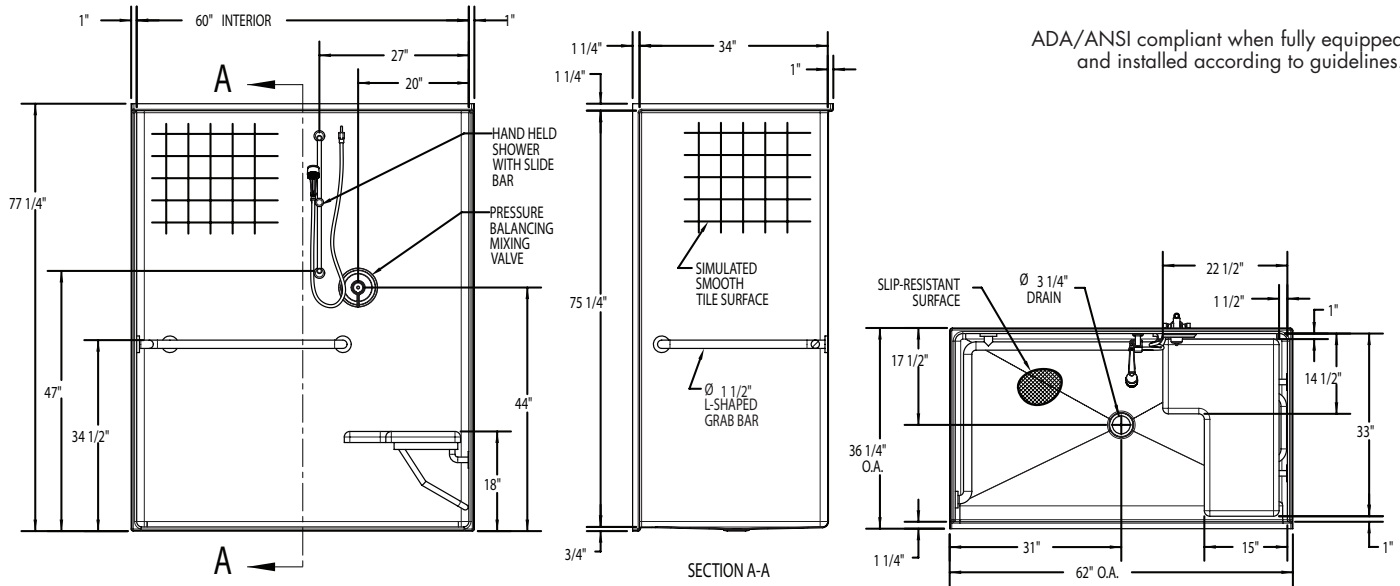


1603BFST

Interior: 60 x 34 x 74 7/8 (1525 x 865 x 1900)
 Exterior: 62 x 36 1/4 x 76 7/8 (1575 x 920 x 1955)
 inches (mm)



ADA/ANSI compliant when fully equipped and installed according to guidelines.



FEATURES lbs (kg) Dimensional Tolerance $\pm \frac{3}{8}$ ". Dimensions needed for site preparation should be measured from the unit. Aquatic assumes no responsibility for preparatory work.

Type and Model #	Material	Wall Finish	Pieces	Drain	Dam/Skirt Height	Net Wt.	Pkg. Wt.
Shower #1603BFST	Gelcoat	Smooth tile	1	Center	3/4" (20mm) skirt, NO threshold	166 (75)	176 (80)

DIMENSIONS

Specifications	inches (mm)
Width: Overall / Net	62 (1575) / 60 (1525)
Depth: Overall / Net	36 1/4 (920) / 34 (865)
Height: Overall / Net	76 7/8 (1955) / 74 7/8 (1900)
Enclosure Opening:	60 (1525)
Skirt Height:	3/4 (20)
Drain Rough-In (from Back Wall)	17 1/2 (445)
Drain Rough-In (from Side Wall)	31 (785)

FRAMING DIMENSIONS inches (mm)

Type	D Depth	W Width	H Height	A	B	C
Alcove	36 1/4 (920)	62 1/8 (1580)	-	Box Out	31 (785)	17 1/2 (445)

