



STANDARD RESPONSE AUTOMATIC SPRINKLERS GL SERIES CONCEALED PENDENT

DESCRIPTION AND OPERATION

The Globe Series GL-SR/C Concealed Pendent Sprinkler offers the ultimate in low profile, aesthetically pleasing appearance. All that is seen at the ceiling is a 3 5/16" diameter ceiling plate color finished to match the specifier's exact requirements. The Sprinkler is available with 1/8" adjustment and a low profile cover plate assembly. The Series GL-SR Concealed Sprinkler may be virtually invisible as it does not interrupt the "smooth flow" of the ceiling. Globe's Concealed Sprinkler utilizes its frangible glass ampule type sprinkler which is located above the ceiling and concealed from view by the ceiling plate. The plate is soldered to the sprinkler special upper support assembly in three places. Upon the application of sufficient heat, the plate falls to the floor exposing the pendent spray sprinkler. At the ampule's rated temperature, the sprinkler opens discharging water onto the floor in its required and approved distribution pattern.

A special spring is attached to the pendent sprinkler deflector that serves to provide a constant tension against the ceiling plate. This feature virtually ensures freedom from environmental vibration problems.

The heart of Globe's Series GL-SR sprinkler proven actuating assembly is a hermetically sealed frangible glass ampule that contains a precisely measured amount of fluid. When heat is absorbed, the liquid within the bulb expands increasing the internal pressure. At the prescribed temperature the internal pressure within the ampule exceeds the strength of the glass causing the glass to shatter. This results in water discharge which is distributed in an approved pattern.

TECHNICAL DATA

- See reverse side for Approvals and Specifications.
- Temperature Ratings -
- 135°F (57°C) Sprinkler, 135°F (57°C) Cover Plate
- 155°F (68°C) Sprinkler, 135°F (57°C) Cover Plate
- 175°F (79°C) Sprinkler, 155°F (68°C) Cover Plate
- 200°F (93°C) Sprinkler, 155°F (68°C) Cover Plate
- Water Working Pressure Rating - 175 psi (12 Bars)
- Factory tested hydrostatically to 500 psi (34 Bars)
- Maximum low temperature glass bulb rating is -67°F (-55°C)
- Frame - bronze • Deflector - brass • Screw - brass
- Bulb Seat - copper • Spring - nickel alloy • Seal - teflon
- Bulb - glass with glycerin based solution, 5mm size
- Cover Plate - brass
- Upper Escutcheon Assembly - steel



**SERIES GL-SR/C
CONCEALED
PENDENT**

• SPRINKLER TEMPERATURE RATING/CLASSIFICATION and COLOR CODING

CLASSIFICATION	AVAILABLE SPRINKLER TEMPERATURES		BULB COLOR	N.F.P.A. MAXIMUM CEILING TEMPERATURE	
ORDINARY INTERMEDIATE	135°F/155°F	57°C/68°C	ORANGE/RED YELLOW/GREEN	100°F	38°C
	175°F/200°F	79°C/93°C		150°F	66°C

STANDARD RESPONSE AUTOMATIC SPRINKLERS GL SERIES CONCEALED PENDENT

SPECIFICATIONS

NOMINAL "K" FACTOR	THREAD SIZE	LENGTH	FLAT COVER PLATE FINISHES***
2.8 (39 metric)	1/2"NPT (15mm)	2 1/2" (6.4cm)	Chrome
4.2 (59 metric)			White Painted
5.6 (80 metric)			Other Painted Finishes ^{1,2}

NOTE: METRIC CONVERSIONS ARE APPROXIMATE.

¹FINISHES AVAILABLE ON SPECIAL ORDER.

²FOR PAINTED PLATES OTHER THAN WHITE, CONTACT GLOBE FOR ORDERING SPECIFICATIONS.

***FACTORY PAINTED COVER PLATES MUST NOT BE REPAINTED. NON-FACTORY APPLIED PAINT MAY ADVERSELY DELAY OR PREVENT SPRINKLER OPERATION IN THE EVENT OF A FIRE.

LISTINGS/APPROVALS

STYLE	SIN	"K" FACTOR	HAZARD ¹	135°F (57°C) Cover Plate		155°F (68°C) Cover Plate			cU-Lus	LPCB ²	CE	FM	MIN. DISTANCE BETWEEN SPRINKLERS <i>Feet (Meters)</i>
				135°F (57°C) Sprinkler	155°F (68°C) Sprinkler	155°F (68°C) Sprinkler	175°F (79°C) Sprinkler	200°F (93°C) Sprinkler					
Concealed Pendent	GL2854	2.8	LH	X	X	X	X	X	X	-	-	-	6 (1.8)
	GL4254	4.2	LH	X	X	X	X	X	X	-	-	-	
	GL5654	5.6	ALL	X	X	X	X	X	X	X	X	X	

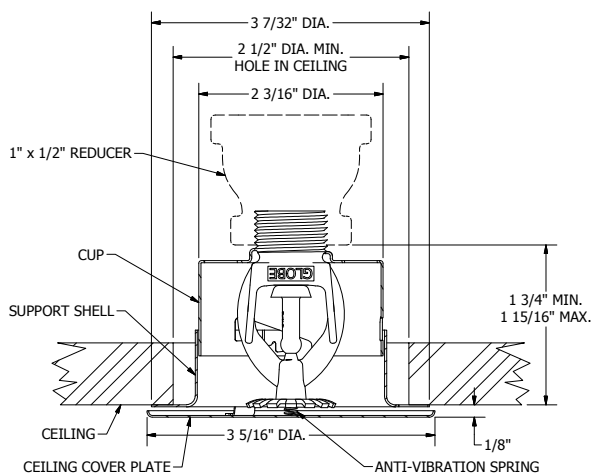
¹SPRINKLER SHALL BE LIMITED AS PER THE REQUIREMENTS OF NFPA13 AND ANY OTHER RELATED DOCUMENTS.

LH: LIGHT HAZARD

ALL: ALL HAZARDS

²LPCB REF. NO. 147c/04

CROSS SECTIONS



**1/8\" ADJUSTMENT FLAT PLATE
CONCEALED PENDENT**

3 5/16\" DIA. FLAT COVER PLATE S/A PART NUMBERS

FINISH	135°F (57°C)	155°F (68°C)
CHROME	325435	325440
WHITE	325437	325442

ORDERING INFORMATION SPECIFY

Quantity • SIN • Style • Orifice

Thread Sizes • Temperature • Finish desired

Quantity - Concealed Wrenches - P/N 325391

Quantity - Protective Caps - P/N 327119

GLOBE® PRODUCT WARRANTY

Globe agrees to repair or replace any of its own manufactured products found to be defective in material or workmanship for a period of one year from date of shipment.

For specific details of our warranty please refer to Price List Terms and Conditions of Sale (Our Price List).

4077 AIRPARK DRIVE, STANDISH, MICHIGAN 48658

989-846-4583

FAX 989-846-9231

1-800-248-0278

www.globesprinkler.com

