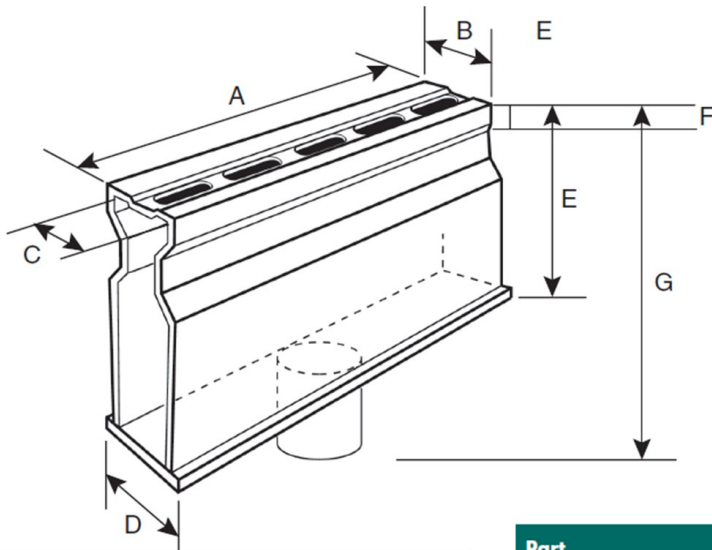


Micro Channel 1-1/2" Sch. 40 Spigot Bottom Outlet



Dimension Key

- A: Length of channel
- B: Outer width of top channel
- C: Inside width of top channel
- D: Width of the bottom of the channel
- E: Height of channel
- F: Height of grate lip
- G: Height including outlet
- H: Weight

Part Number	A	B	C	D	E	F	G	H
8501	6"	1.25	N/A	1 1/4	3 1/4	N/A	4 1/4	0.35
8502	6"	1.25	N/A	1 1/4	3 1/4	N/A	4 1/4	0.35
8503	6"	1.25	N/A	1 1/4	3 1/4	N/A	4 1/4	0.35

Load Recommendation Guide



Class A

- Loads of 1-60 psi.
- Recommended for pedestrians, bicycles and wheel chair traffic.

ADA Compliant/Heel-proof

ADA Compliance

NDS provides a wide selection of grates that are compliant with the Americans with Disabilities Act. The ADA Accessibility Guidelines For Buildings and Facilities Section 4.5.4 specifies that ground and floor grates "shall have spaces no greater than 1/2 in (13 mm) wide in one direction."

We are pleased to provide grates that comply with these requirements, so that no individual need be limited from accessing the area safely and confidently.

To see if a grate is ADA compliant, please check the description of the product in our NDS Drainage Catalog: products that meet these requirements are marked "ADA compliant."

Like to find out more about ADA compliance and NDS? Send us your question and we'd be happy to help.



Part #: 8501,8502,8503
 Material: PVC
 Recessed reinforced grate with slots.
 Color: #8501 (White), #8502 (Sand), #8503 (Gray)
 Fits: Micro Channel
 Outlet: 1-1/2" Sch. 40 Spigot End Outlet.
 Grate Opening: 3/16" x 5/8"
 Open Surface Area: 1 Sq. Inches per foot
 Head Pressure / Flow Rate:
Head (inches) - Max Flow
 1" = 4.30 GPM
 0.5" = 3.06 GPM
 UV Inhibitors
 Weight Per Each: 0.35 lbs.

