

STEP LADDER



SERIES FS1500

FIBERGLASS STEP LADDER

TYPE IA

300 LBS

LOAD CAPACITY

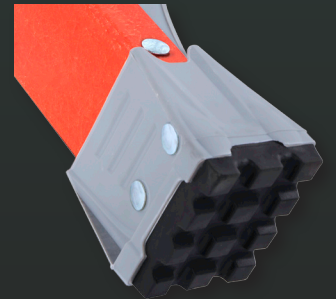
(Includes weight of user plus materials)



RAPTOR TOP™



RAPTOR BOOT™



HEAT TRANSFER TOP

No more OSHA fines due to missing duty rating labels. Scratch and UV resistant



LOUISVILLE
LADDER

BECAUSE WORK AIN'T PLAY.

ANSI
Meets or exceeds requirements
of American National Standards Institute
ANSI A14.2



STEP LADDER



SERIES FS1500



1 Raptor Top

Multi-functional Raptor Top with multiple tool slots and magnet.



2 Double Rivet

Double-rivet step construction delivers rigidity.



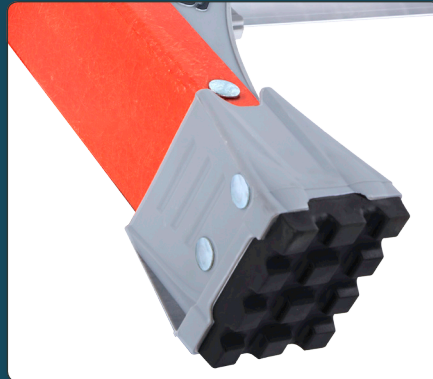
3 Wide Back Braces

Provides maximum stability.



4 SHOX™

Advanced impact absorption system offers superior protection against damage.



5 Raptor Boot

Non-marring tread delivers slip-resistant footing and durability.



MODEL	LADDER SIZE	MAX. REACH	BOTTOM WIDTH	APPROX. SPREAD	APPROX. WEIGHT (LBS)	APPROX. CUBES
FS1502*	2'	8' 9"	17"	18 1/8"	8	2'
FS1503	3'	7' 6"	18"	24 1/4"	11	2.8'
FS1504	4'	8' 6"	19 3/8"	28 7/8"	14	3.9'
FS1505	5'	9' 5"	21"	35"	17	5.3'
FS1506	6'	10' 5"	22 3/8"	40 1/2"	20	6.7'
FS1507	7'	11' 4"	24"	46 3/8"	22	8.2'
FS1508	8'	12' 3"	25 3/8"	53"	26	10'
FS1510	10'	14' 2"	28 1/2"	65"	38	14.1'
FS1512	12'	16' 1"	31 3/8"	77"	46	18.5'

*FS1502 is a Step Stool with a standing top.



LOUISVILLELADDER.COM

1.800.666.2811

