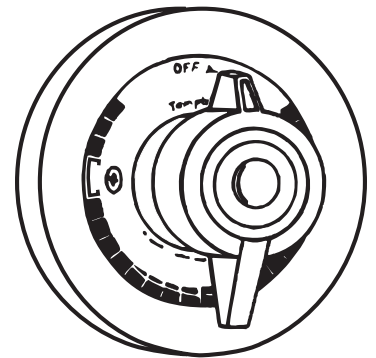


BP-46-2 Temptrol II™ Tub and Shower Valve

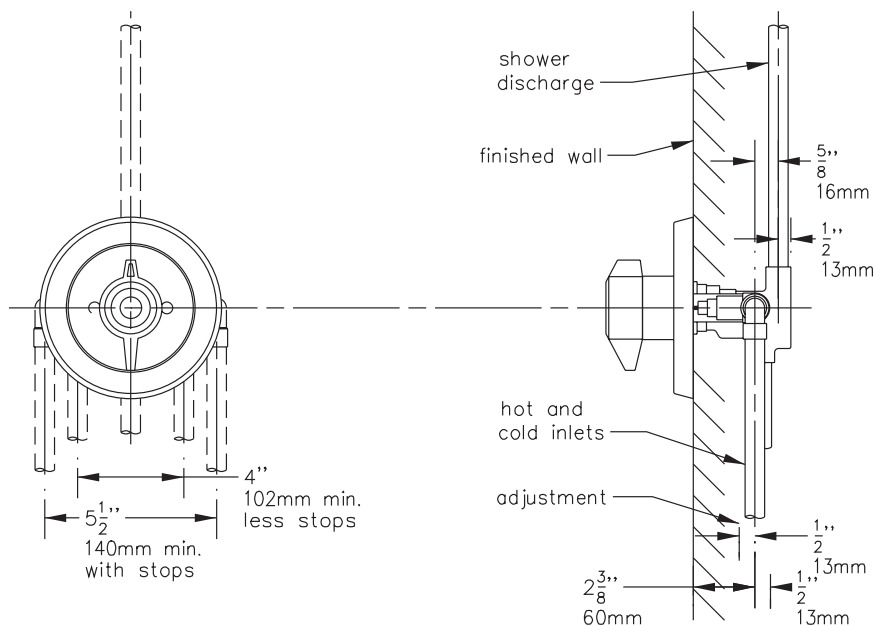
Temptrol II Pressure Balancing mixing valve with built-in choke and adjustable stop screw to limit handle turn.

Modifications:

- Suffix X:** Integral service stops—allows water shut-off at valve for service
- Suffix B:** Chrome brass escutcheon on valve
- Suffix IPS:** 1/2 inch female IPS connections
- Suffix OP:** Remodel cover plate in lieu standard escutcheon (dial mounts directly to cover plate)
- Suffix RC:** Remodel cover plate
- Suffix CC:** Conversion cover plate



**SYMMONS PRODUCTS MEET
ANSI A112.18.1M, EPA '92
AND ALL KNOWN FLOW RATE
REQUIREMENTS.
Shower Heads and Hand Showers
2.5 GPM (9.5 L/min)**



Job/Location

.....

.....

Engineer

.....

.....

Contractor

.....

.....

This drawing to be used for rough-in installation only. All floor to center dimensions optional. Concealed piping and fittings not furnished by manufacturer. For ADA compliance (Americans with Disabilities Act) consult ADAAG or your state regulations for proper product choice and mounting locations. For complete installation, adjustment and service information see installation instructions.

Symmons Industries, Inc. ■ 31 Brooks Drive ■ Braintree, MA 02184
(800) 796-6667, (781) 848-2250 ■ Fax (800) 961-9621, (781) 843-3849
Website: www.symmons.com ■ Email: customerservice@symmons.com

©2003, 2008 Symmons Industries, Inc. Printed in U.S.A. ■ 100108

SYMMONS®
the smart choice™