

UNIVERSAL BRACKETING SYSTEM

570 & 572 series

Pipe Titan™

SPECIFICATION

Sioux Chief 570 series Pipe Titan™ shall be used where necessary for bracketing applications. Bracket shall allow fastening on top or bottom edge. Molded pipe cradles shall be 1" on-center for quick and easy pipe alignment. Bracket shall have pilot holes for screws and slots for stainless steel bands. Bracket shall have holes on each end for 3/8" thread rod for trapeze applications. Bracket shall prevent electrolysis and reduce transmission of waterline noise and vibration. Bracket and clamps shall be CPVC compatible. Bracket shall fit inside a 2 × 4 wall when fastened to 2" pipe. Bracket shall be UPC listed.

MATERIALS

- red bracket: fire-retardant ABS (UL-94 V0 flame rating), U.V. stabilized
- green bracket: high-impact polystyrene, U.V. stabilized
- red clamps: fire-retardant PVC (UL-94 V0 flame rating), U.V. stabilized
- white clamps: high-density polyethylene, U.V. stabilized
- clamp screw: zinc-plated steel, 5/16" hex/Phillips
- steel band: 300 stainless steel
- band screw: 410 stainless steel, slotted/hex-head

SAFE WORKING LOAD*

mounting point	1	2	3	4	5	6	7	8	9
one end:	275	155	90	72	62	50	47	42	40 lbs.
balanced load:	190 lbs. total								
stainless steel band:	60 in/lbs. ultimate torque								

* One-half failure load at 72 °F.

DIMENSIONS

A: Overall length	11"
B: Base height	2½"
C: Cradle centers	1" on-center
D: Bracket width	1¼"
E: Base width	1⅝"
F: End holes	13/32"
G: stainless steel band slots	9/16"
H: Clamp height	1¼"
I: Clamp capacity	5/8"-1" O.D.
J: Strap height	7/8"
K: Strap capacity	7/8"-3½" O.D.
L: Waste arm radius	1¾"
M: Pilot holes	for clamp screws
N: Stainless steel band	½" wide × 0.025" thick 5" or 7" max diameter

Item # Submitted _____

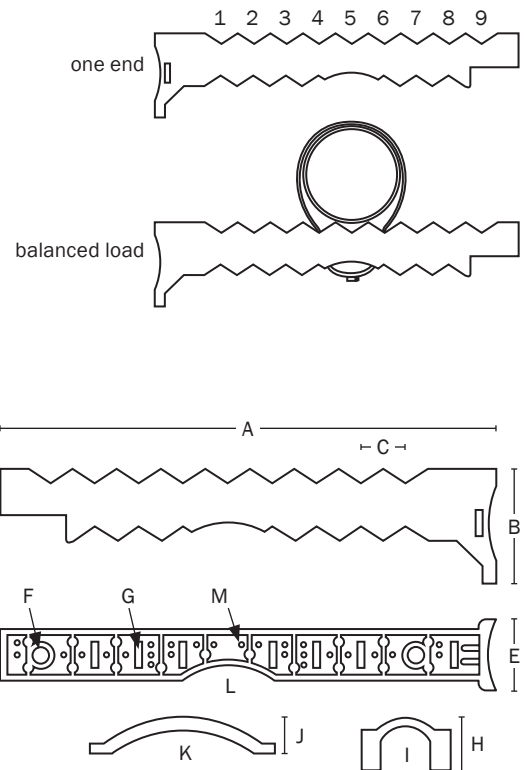
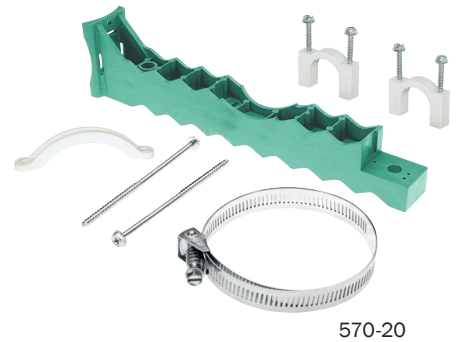
Job Name _____

Location _____

Engineer _____

Contractor _____

PO# _____ TAG _____



Create Item Number

57A-B

e.g. 572-20 = Red bracket with two straps, one clamp, and one 5" stainless steel band.

A BRACKET	B BRACKET CONFIGURATION	B BRACKET CONFIGURATION
<input type="checkbox"/> 0 green	<input type="checkbox"/> 10 two straps, one clamp *	<input type="checkbox"/> 22 two straps, one clamp, one 5" stainless steel snap-lock band
<input type="checkbox"/> 2 red (fire-retardant)	<input type="checkbox"/> 20 two straps, one clamp, one 5" stainless steel band	<input type="checkbox"/> 24 two straps, one 7" stainless steel snap-lock band

* Only available with green bracket