

Connected in quality.

# VIEGA PROPRESS<sup>®</sup> SYSTEMS

POCKET GUIDE



viega.us

**viega**

Viega.

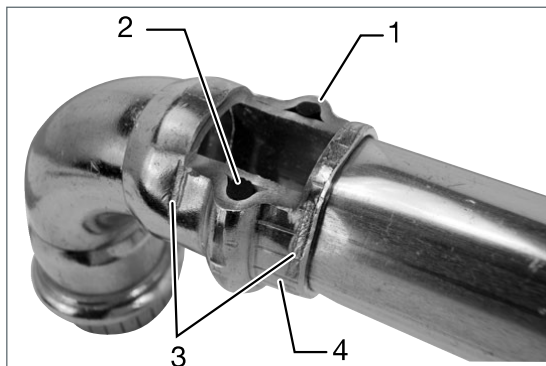
Connected in quality.

### Building on Tradition

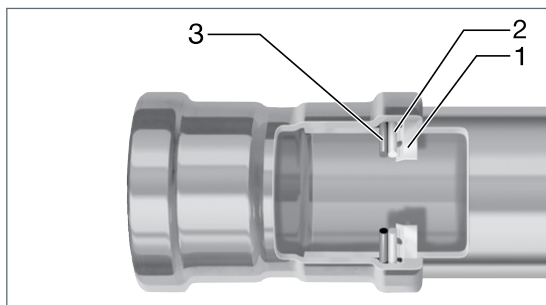
Founded 125 years ago, Viega is a privately owned international group of companies. In the United States, Canada, Mexico, and Latin America, Viega specializes in plumbing, heating, and pipe-joining technologies. The values of Viega's founder, Franz-Anselm Viegener, are just as present today as they were when he started the company in 1899. Courage, passion, and innovative spirit are still the basics of Viega's foundation.

### At Viega, Safety Is Priority

Safe, certain, and secure, Viega fittings are designed for peace of mind.



1. In all ProPress ½" to 2" fittings, Viega's unique Smart Connect® technology helps installers ensure that they have pressed all connections.
2. The EPDM sealing element is suitable for many applications.
3. Viega's distinctive hexagonal pressing pattern bonds the fitting and tube and provides the mechanical strength for the connection.
4. Cylindrical guides help installers ensure proper insertion of the tube and protect the sealing element.



1. In ProPress 2½" to 4" fittings, the 420 stainless steel grip ring's teeth bite into the tube and lock the fitting securely in place.
2. A PBT (Polybutylene Terephthalate) separator ring protects the sealing element from damage by creating a physical separation during installation and later during pressing.
3. The EPDM sealing element ensures watertight or airtight connections.



This document is subject to updates. For the most current Viega technical literature and warranty information, please visit [www.viega.us](http://www.viega.us).



|   |           |
|---|-----------|
| <b>Introduction</b>                                   | <b>4</b>  |
| Viega ProPress Systems                                | 4         |
| <b>System Data</b>                                    | <b>6</b>  |
| Viega ProPress Fitting Systems                        | 6         |
| <b>Tech Data</b>                                      | <b>7</b>  |
| Viega ProPress Copper Tube Compatibility              | 7         |
| <b>Product Instructions</b>                           | <b>8</b>  |
| Viega ProPress ½" to 4" Fittings                      | 8         |
| Changing Sealing Elements                             | 10        |
| <b>Technical Information</b>                          | <b>11</b> |
| Approved Applications                                 | 11        |
| Minimum Clearance Between Two Viega Press Connections | 12        |
| Friction Loss in Equivalent Feet of Tube              | 12        |
| Sealing Element Description                           | 13        |
| No-Stop Couplings                                     | 14        |
| Soldering or Brazing                                  | 14        |
| Welding   | 15        |
| General Installation Notes                            | 15        |
| Deflection  | 16        |
| Tool Clearances                                       | 17        |
| Pressing with Ring and Actuator in Tight Quarters     | 20        |
| <b>Dimensional Documentation</b>                      | <b>21</b> |
| ProPress Fittings                                     | 21        |
| <b>Frequently Asked Questions</b>                     | <b>49</b> |



According to NSF and EPA Title 40 Ch1.D.141: Use of this material may not be appropriate in all water chemistries. Copper [tube, pipe, or fitting] may require corrosion control to limit the leaching of copper into drinking water under certain water chemistries. Refer to Section I-1.1 of NSF/ANSI/CAN 61 for the water quality considerations to be used before installing this product.



Viega products are designed to be installed by licensed and trained plumbing and mechanical professionals who are familiar with Viega products and their installation. **Installation by non-professionals may void Viega LLC's warranty.**



**DANGER!**  
**Read and understand all instructions for installing Viega ProPress fittings.** Failure to follow all instructions may result in extensive property damage, serious injury, or death.



## Viega ProPress Systems

Viega ProPress systems are state-of-the-art press-fitting systems that provide economical and reliable installations for the commercial, industrial, and residential markets.

Viega ProPress are copper and Zero Lead bronze fittings and valves in copper tube size (CTS) ranging from 1/2" to 4". The fittings require no soldering or brazing and are installed with electrohydraulic press tools (battery-powered or corded press tools).

The fittings feature a green dot representing Smart Connect technology with an EPDM sealing element suitable for many applications. Viega's unique Smart Connect technology helps installers ensure that they have pressed all connections.

Viega ProPress systems can help reduce installation time up to 60 percent compared to traditional methods of pipe joining. Soldering and brazing copper can be messy and time-consuming, and connections are not always reliable. With Viega press technology, installers can make consistent, secure press connections in less than seven seconds without flame or heavy equipment.

For applications ranging from potable water to inert gases, Viega ProPress fittings can be customized for a wide variety of applications in industrial, commercial, or residential projects.

### Smart Connect Technology – Security Under Pressure


Locating unpressed connections is an important step in the pressure-testing process. Viega ProPress includes Smart Connect technology, providing quick and easy identification of unpressed connections during a pressure test.

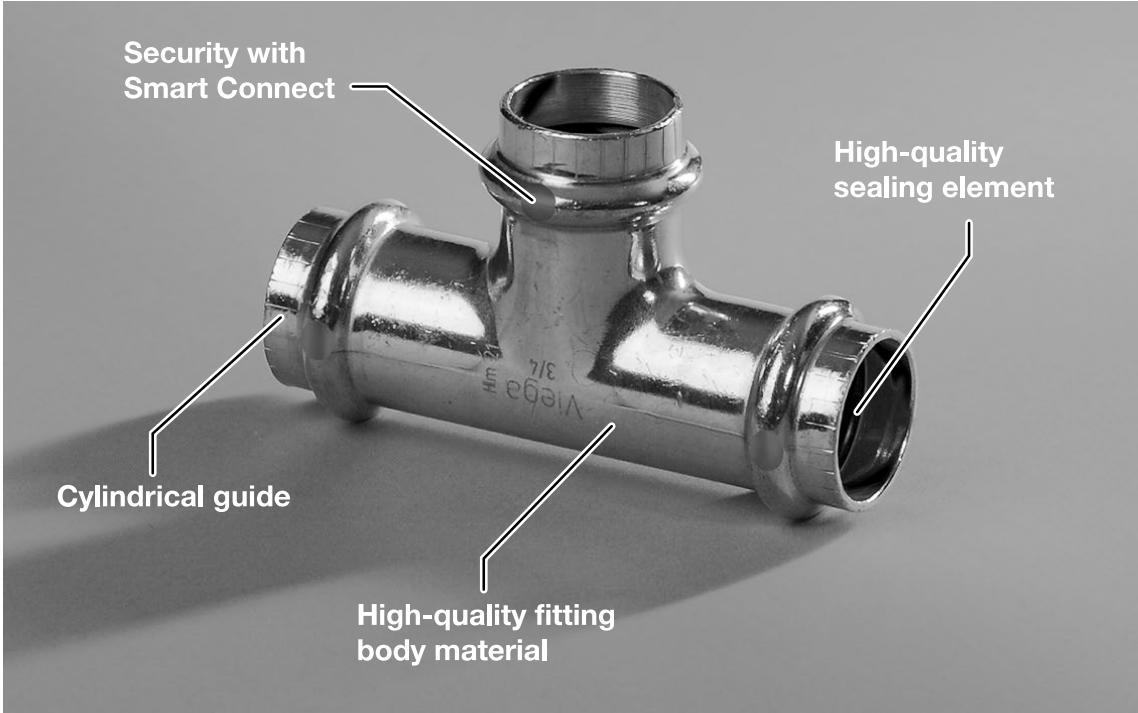
Smart Connect technology is an integral part of the fitting's design, providing a path for liquids and/or gases from inside the system past the sealing element of an unpressed connection. When pressed according to our Product Instructions, the fluid path is altered, creating a reliable, leakproof connection.

Unpressed connections are located by pressurizing the system with air or water. When testing with water, the proper pressure range is 15 to 85 psi. Pressure testing with air can be dangerous at high pressures. When testing with compressed air, the proper pressure range is 1/2 to 45 psi. Following a successful Smart Connect test, the system may be pressure tested up to 600 psi maximum for water and 200 psi maximum for air if required by local code requirements.

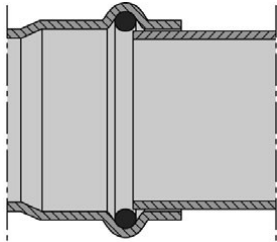


- 1** Identify an unpressed connection during pressure testing when air or water flows past the sealing element.
- 2** Upon identification, use the press tool to press the fitting, making a secure, leakproof connection.
- 3** Viega ProPress connections are fast, flameless, and reliable.

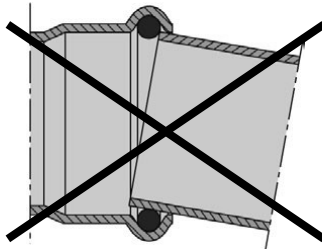
 Testing for unpressed connections using Smart Connect is not a replacement for pressure-testing requirements of local codes and standards.



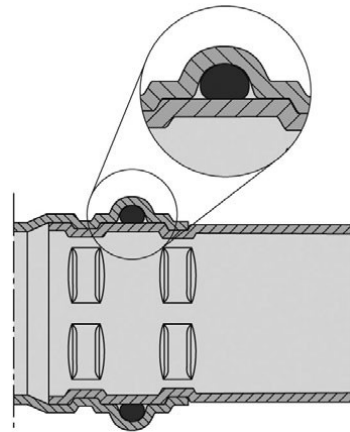
**Cylindrical Guides**



All Viega ProPress fittings are designed with cylindrical guides to keep the tube straight and protect the sealing element during assembly.



Fittings that do not have cylindrical guides risk making an unsecure connection, and leaving the sealing element vulnerable to damage prior to pressing.



Fittings are radially pressed around the sealing element in a single step.

## Viega ProPress Fitting Systems

Viega ProPress may only be pressed onto copper tube in accordance with ASTM B88 or B75. When pressing onto B88 copper tube types, K, L, and M may be used. Tempers O60 and O50, known as “soft copper”, are limited to nominal sizes ½" to 1¼". Temper H58, known as “hard copper”, may be used with nominal sizes ½" to 4".



When pressing onto B75 copper tube, additional considerations apply.

See [Viega ProPress Copper Tube Compatibility Tech Data](#), page 7.

Viega ProPress fittings are available in elbows, couplings, reducers, tees, reducing tees, threaded adapters, unions, caps, and flanges.

### Components

- Alloy: Copper – UNS C12200, Zero Lead silicon bronze – C87710 (cast) or C8770 (machined)
- Peroxidically cured EPDM sealing element
- 420 stainless steel grip ring for 2½" to 4" fittings
- PBT separator ring for 2½" to 4" fittings

### Operating Parameters

- Operating Pressure: 300 psi maximum
- Test Pressure: 600 psi maximum
- Operating Temperature: 0°F to 250°F

### Listings and Certifications

- NSF®-61
- NSF®-372
- IAPMO/ANSI/CAN Z1117
- ICC-ES LC1002
- ABS
- CSA Low Lead Content
- ASME B16.51
- ASTM F3226
- FM Class 1920



### CAUTION!

Listings, certifications, and approvals are shown for reference only and may not cover every item in the product line. They are subject to change, with the most current official listing located at the appropriate agency's portal.

### Compliant With

- ASME B31, B31.1, B31.3, B31.9
- ASTM B1029
- ASTM B75, B88
- ASTM F3226
- ASTM G93 Level A (O<sub>2</sub> Cleaned)
- CGA G-4.1 (O<sub>2</sub> Cleaned)
- IAPMO National Standard Plumbing Code (NSPC)
- IAPMO Uniform Mechanical Code (UMC)
- IAPMO Uniform Plumbing Code (UPC)
- ICC International Mechanical Code (IMC)
- ICC International Plumbing Code (IPC)
- ICC International Residential Code (IRC)

Contact your local Viega representative for details on local approvals.

### Approved Applications

- Hot and cold potable water
- Rainwater/gray water
- Chilled water
- Hydronic heating (with glycol)
- Low-pressure steam (15 psi maximum) with FKM sealing element swap
- Residential steam (5 psi maximum)
- Ethanol
- Compressed air
- Non-medical gases
- Vacuum (29.2" Hg maximum 68°F)

ProPress fittings are approved for installations in both above- and below-ground applications. Per code, local inspector approval must be obtained prior to installation below ground.

### Smart Connect Technology

ProPress fittings are manufactured with Viega's unique Smart Connect technology. Designed into the fitting itself, Viega Smart Connect technology allows identification of an unpressed fitting during pressure testing.

### Viega ProPress Systems – Cleaned

Fittings and valves for systems requiring high-purity may be cleaned and individually bagged listed under separate part numbers.




### Viega ProPress Copper Tube Compatibility

#### Description

Viega ProPress may only be pressed onto copper tube in accordance with ASTM B88 or B75.

When pressing onto B88 copper tube, types K, L, and M may be used. Tempers O60 and O50, known as soft copper, are limited to nominal sizes 1/2" to 1 1/4". Temper H58, known as hard copper, may be used with nominal sizes 1/2" to 4".

When pressing onto B75 copper tube, the tube dimensions must be in accordance with the tables below. Only tempers H58, O60, and O50 may be used with ProPress.


 It is the responsibility of the system designer to understand all applicable codes and standards. B75 tubing may not conform to code compliance in all areas or under all Viega listings. These standards may include but are not limited to ASME B16.51.

#### B75 Annealed Tube Dimensions Compatible with ProPress

| B75 O60 Soft Anneal and O50 Light Anneal |         |                        |               |               |
|--|---------|------------------------|---------------|---------------|
| Nominal (in)                             | OD (in) | TOL <sub>OD</sub> (in) | Wall Max (in) | Wall Min (in) |
| 1/2                                      | 0.625   | 0.0025                 | 0.054         | 0.025         |
| 3/4                                      | 0.875   | 0.0030                 | 0.071         | 0.029         |
| 1  | 1.125   | 0.0035                 | 0.071         | 0.031         |
| 1 1/4                                    | 1.375   | 0.0040                 | 0.071         | 0.038         |

#### B75 Drawn Tube Dimensions Compatible with ProPress

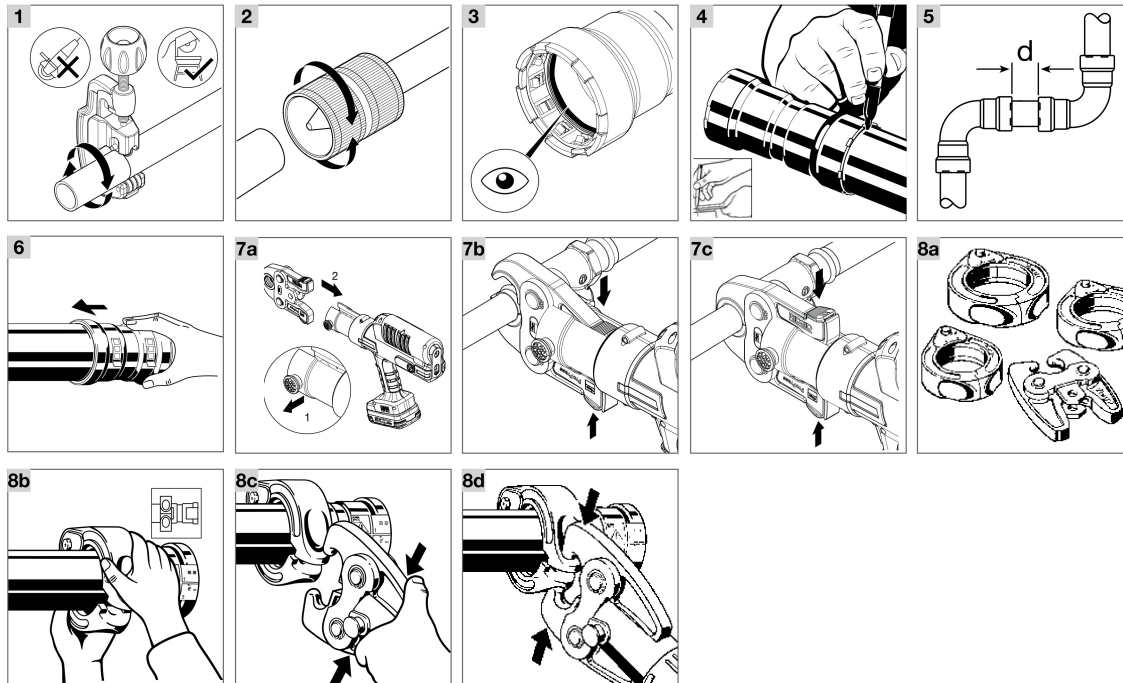
| B75 H58 Drawn (General) |         |                        |               |               |
|-------------------------|---------|------------------------|---------------|---------------|
| Nominal (in)            | OD (in) | TOL <sub>OD</sub> (in) | Wall Max (in) | Wall Min (in) |
| 1/2                     | 0.625   | 0.0010                 | 0.054         | 0.025         |
| 3/4                     | 0.875   | 0.0010                 | 0.071         | 0.029         |
| 1                       | 1.125   | 0.0015                 | 0.071         | 0.031         |
| 1 1/4                   | 1.375   | 0.0015                 | 0.071         | 0.038         |
| 1 1/2                   | 1.625   | 0.0020                 | 0.079         | 0.044         |
| 2                       | 2.125   | 0.0020                 | 0.091         | 0.052         |
| 2 1/2                   | 2.625   | 0.0020                 | 0.105         | 0.059         |
| 3                       | 3.125   | 0.0020                 | 0.120         | 0.065         |
| 4                       | 4.125   | 0.0020                 | 0.147         | 0.085         |

 It is the responsibility of the system designer to understand all applicable codes and standards. B75 tubing may not conform to code compliance in all areas or under all Viega listings. These standards may include but are not limited to ASME B16.51 and IAPMO/ANSI/CAN Z1117.

## Viega ProPress 1/2" to 4" Fittings

1/2"-2" fittings are for 1/2"-2" hard copper tubing or 1/2"-1 1/4" soft copper tubing.

2 1/2"-4" fittings are for hard copper tubing only.



- 1** Cut the tube square. Do not deform the tube when cutting.
- 2** Remove burr from inside and outside of the tube and prep to proper insertion depth using a preparation tool or fine-grit sandpaper.
- 3** Fittings contain a sealing element and may contain a separator ring or grip ring. Check that all components are present, clean, and undamaged. Do not use oils or lubricants.


- 4** Mark proper insertion depth as indicated by the following ProPress Minimum Insertion Depth chart. Improper insertion depth may result in an improper seal. It is recommended that the depth marking be visible on the completed assembly.

**i** For applications requiring Viega ProPress with FKM or HNBR sealing elements, remove the factory-installed EPDM sealing element and replace with an FKM or HNBR sealing element. See Changing Sealing Elements on page 10.

**ProPress Minimum Insertion Depth**

| Tube size (in) | d (in)  | d (mm) |
|----------------|---------|--------|
| 1/2            | 3/4     | 19     |
| 3/4            | 7/8     | 23     |
| 1              | 7/8     | 23     |
| 1 1/4          | 1       | 26     |
| 1 1/2          | 1 1/16  | 37     |
| 2              | 1 9/16  | 40     |
| 2 1/2          | 1 11/16 | 43     |
| 3              | 1 15/16 | 50     |
| 4              | 2 3/8   | 60     |



 Copper tubing must be free of surface imperfections, including metal stamped print lines, before a ProPress fitting is installed.

**5** Refer to the following chart for the minimum distance between fittings to ensure a correct press. Failure to provide this distance may result in an improper seal.

| ProPress Minimum Distance (d) |        |        |
|-------------------------------|--------|--------|
| Tube size (in)                | d (in) | d (mm) |
| 1/2                           | 0      | 0      |
| 3/4                           | 0      | 0      |
| 1                             | 0      | 0      |
| 1 1/4                         | 7/16   | 10     |
| 1 1/2                         | 5/8    | 15     |
| 2                             | 3/4    | 20     |
| 2 1/2                         | 5/8    | 15     |
| 3                             | 5/8    | 15     |
| 4                             | 5/8    | 15     |

 **WARNING!** Keep extremities and foreign objects away from press tool during pressing operation to prevent injury or incomplete press.

**6** While turning slightly, slide fitting onto the tube to the marked depth. End of tube must contact stop. Once the assembly is completed, it is recommended that the depth marking still be visible.

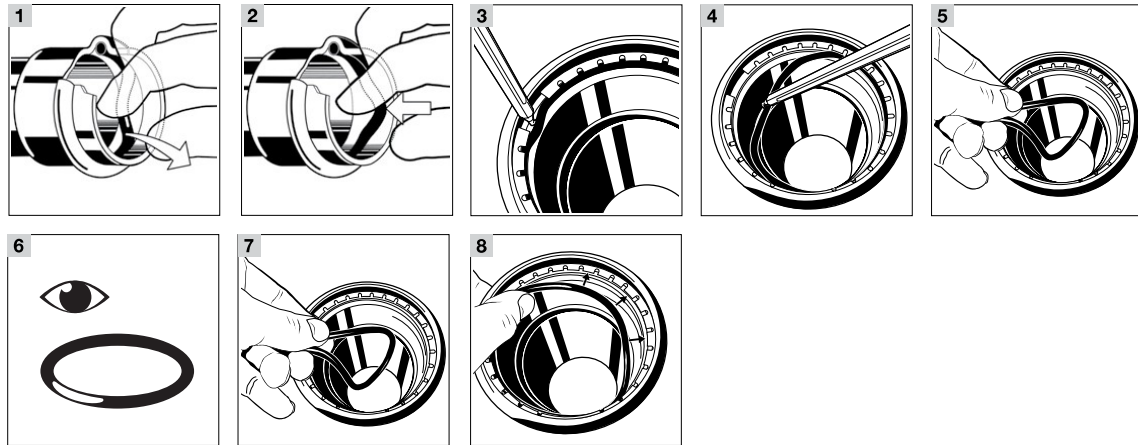
### Pressing 1/2" to 2" Fittings

- 7a** Insert appropriate Viega ProPress jaw (2) into the press tool and push in, holding pin (1) until it locks in place.
- 7b** Open the jaw and place at right angles on the fitting. Visually check insertion depth using mark on tubing.
- 7c** Hold trigger on press tool until press jaws have fully engaged the fitting. Jaws will automatically release after a full press is made. After pressing, open the jaw and remove the press tool.

### Pressing 2 1/2" to 4" Fittings

- 8a** ProPress 2 1/2" to 4" connections must be performed with compatible rings. Do not mix actuators and rings from different manufacturers. Do not use rings intended for 2 1/2" to 4" bronze fittings. Use of incompatible rings will result in an improper connection.
- 8b** Open XL-C ring and place at right angles on the fitting. XL-C ring must be engaged on the fitting bead. Check insertion depth.
- 8c** With V2 actuator inserted into the tool, open the V2 actuator and connect it to the XL-C ring.  
Hold the trigger until the V2 actuator has fully engaged the XL-C ring. Keep extremities and foreign objects away from XL-C ring and V2 actuator during pressing operation to prevent injury or incomplete press. Upon completion of the press, release the V2 actuator from XL-C ring. Remove the XL-C ring from the fitting.
- 8d**

## Changing Sealing Elements



### Changing Sealing Elements

**!** Viega products are designed to be installed by licensed and trained plumbing and mechanical professionals who are familiar with Viega products and their installation. **Installation by non-professionals may void Viega LLC's warranty.**

**! WARNING!** Do not use sharp objects to remove the sealing element, as this may damage the seal.

To change sealing elements for 1/2" to 2" fittings, follow steps 1 and 2. For 2 1/2" to 4" fittings, follow steps 3 through 10.

### 1/2" to 2" Fittings

- 1** Remove the sealing element from the bead using a blunt object such as a finger or an O-ring pick.
- 2** Insert new, undamaged sealing element into the bead. Check to make sure the whole sealing element is in the bead.

### 2 1/2" to 4" Fittings

- 3** Insert O-ring pick between sealing element and separator ring.
- 4** Use O-ring pick to push the sealing element into the fitting below the grip ring.
- 5** Carefully reach past the grip ring, pinch and remove the sealing element from the fitting.

**! WARNING!** Grip ring is extremely sharp; use gloves or extreme caution when reaching into fitting.

**! CAUTION!** If reusing the sealing element ensure the sealing element does not make contact with grip ring as this can cause damage.

- 6** Visually inspect replacement sealing element. Ensure it is free of debris; there are no defects, scratches, or burrs; and is coated with lubricant.
- 7** Pinch the sealing element and place it fully inside the fitting, below the separator and grip rings.
- 8** Carefully pull the sealing element up into the channel below the separator ring. Ensure proper concentric seating of grip ring, separator ring, and sealing element before installation.



## Approved Applications

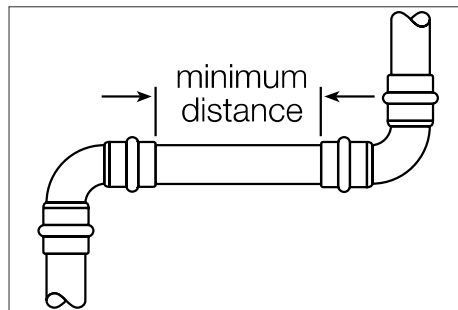
Viega systems are designed for a wide range of applications across plumbing, heating, cooling, and various industrial uses. For detailed guidance on approved applications and compatible working fluids, please consult the [Viega Commonly Approved Applications Chart](#). If specific project requirements involve unique working fluids or conditions, or your intended application is not explicitly listed, you may submit an [Application Evaluation Form](#). This process allows our experts to review your specific needs and determine the suitability and compatibility of Viega products, ensuring optimal performance and system integrity for your project while maintaining proper warranty coverage.

Use the below QR code to be taken directly to the Viega Commonly Approved Applications Chart.



## Minimum Clearance Between Two Viega Press Connections

| Tubing Diameter (in) | Viega ProPress         |                        |
|----------------------|------------------------|------------------------|
|                      | Minimum Clearance (in) | Minimum Clearance (mm) |
| 1/2                  | 0                      | 0                      |
| 3/4                  | 0                      | 0                      |
| 1                    | 0                      | 0                      |
| 1 1/4                | 7/16                   | 10                     |
| 1 1/2                | 5/8                    | 15                     |
| 2                    | 3/4                    | 20                     |
| 2 1/2                | 5/8                    | 15                     |
| 3                    | 5/8                    | 15                     |
| 4                    | 5/8                    | 15                     |



## Friction Loss in Equivalent Feet of Tube

| Size (in) | Wrought – Copper Fittings |           |            |         |          |
|-----------|---------------------------|-----------|------------|---------|----------|
|           | 90° Elbow                 | 45° Elbow | Tee Branch | Tee Run | Coupling |
| 1/2       | 1.0                       | 0.5       | 2.0        | —       | —        |
| 3/4       | 2.0                       | 0.5       | 3.0        | —       | —        |
| 1         | 2.5                       | 1.0       | 4.5        | —       | —        |
| 1 1/4     | 3.0                       | 1.0       | 5.5        | 0.5     | 0.5      |
| 1 1/2     | 4.0                       | 1.5       | 7.0        | 0.5     | 0.5      |
| 2         | 5.5                       | 2.0       | 9.0        | 0.5     | 0.5      |
| 2 1/2     | 7.0                       | 2.5       | 12.0       | 0.5     | 0.5      |
| 3         | 9.0                       | 3.5       | 15.0       | 1.0     | 1.0      |
| 4         | 12.5                      | 5.0       | 21.0       | 1.0     | 1.0      |

| Size (in) | Cast – Zero Lead Bronze Fittings |         |            |
|-----------|----------------------------------|---------|------------|
|           | 90° Elbow                        | Tee Run | Tee Branch |
| 1/2       | 1                                | 1/2     | 2          |
| 3/4       | 2                                | 1/2     | 3          |
| 1         | 4                                | 1/2     | 5          |
| 1 1/4     | 5                                | 1       | 7          |
| 1 1/2     | 8                                | 1       | 9          |
| 2         | 11                               | 2       | 12         |

## Sealing Element Description

### EPDM Sealing Element

ProPress fittings are manufactured with an EPDM sealing element installed at the factory. The EPDM sealing element is used mainly for potable water, hydronic heating, fire sprinklers, and compressed-air installations.

**Definition:** EPDM

Ethylene-Propylene-Diene-Monomer, gloss black in color

**Operating Temperature:** 0°F to 250°F

The EPDM sealing element is a synthetically manufactured and peroxidically cross-linked general-purpose elastomer with a wide range of applications. It is resistant to aging, ozone, UV, weathering, environmental influences, chemicals, and most alkaline solutions.

The EPDM sealing element is recommended for drinking water applications. It is particularly resistant to hot water, making it ideal for seals and gaskets in heating systems, fittings, and household appliances (e.g., washing machines, pumps, and dishwashers). It is not resistant to hydrocarbon solvent solutions, oils, chlorinated hydrocarbons, turpentine, or gasoline.

### FKM Sealing Element

ProPress fittings may be changed from the factory-installed EPDM sealing element to an FKM sealing element. See *Changing Sealing Elements* on page 10. FKM is well known for its excellent resistance to petroleum products and solvents as well as for its exceptional high-temperature performance, which makes it ideal for seals and gaskets in solar, district heating, low-pressure steam, and compressed-air systems.

**Definition:** FKM

Fluoroelastomer, dull black in color

**Operating Temperature:** 14°F to 284°F (with temperature spikes up to 356°F)

The FKM sealing element is a special-purpose elastomer typically installed where higher temperatures are required. It possesses excellent resistance to aging, ozone, UV, weathering, environmental influences, and oils and petroleum-based additives.

### HNBR Sealing Element

ProPress press fittings may be changed from the factory-installed EPDM sealing element to an HNBR sealing element. See *Changing Sealing Elements* on page 10. The HNBR sealing element is used mainly for inert gas, liquid fuel, and lubricant oil. It is commonly used in fuel-oil heating systems.

**Definition:** HNBR

Hydrogenated Nitrile Butadiene Rubber, yellow in color

**Operating Temperature:** -40°F to 180°F

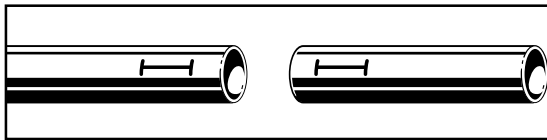
HNBR is widely known for its physical strength and for retention of its properties after long-term exposure to heat, oil, and chemicals.

The unique properties of the HNBR sealing element have resulted in its wide adoption for automotive, industrial, and assorted performance-demanding applications (e.g., engine seals, grommets, and gaskets; fuel system seals and hoses; transmission system bonded piston seals; chevron seals, oil field packers, and rotary shaft seals.)

The HNBR sealing element is not suitable for food contact applications and cannot be installed in drinking water applications.

## No-Stop Couplings

No-stop couplings and extended no-stop couplings are often used to conduct repairs. Without a stop, these couplings can slide completely onto a tube and allow a connection to be made in tighter spaces. Unlike fittings with an integrated stop that have a minimum insertion depth, no-stop couplings have minimum and maximum allowable insertion depths. The minimum and the maximum insertion depths should be marked, and a line should connect the two marks.



### Viega ProPress No-Stop Couplings

| Tube Diameter (in) | Minimum Insertion |    | Maximum Insertion |    |
|--------------------|-------------------|----|-------------------|----|
|                    | in                | mm | in                | mm |
| 1/2                | 3/4               | 19 | 7/8               | 22 |
| 3/4                | 7/8               | 23 | 1 1/8             | 28 |
| 1                  | 7/8               | 23 | 1 1/8             | 28 |
| 1 1/4              | 1                 | 26 | 1 3/16            | 30 |
| 1 1/2              | 1 7/16            | 37 | 1 9/16            | 40 |
| 2                  | 1 9/16            | 40 | 1 3/4             | 44 |
| 2 1/2              | 1 11/16           | 43 | 2 5/8             | 67 |
| 3                  | 1 15/16           | 50 | 2 15/16           | 75 |
| 4                  | 2 3/8             | 60 | 3 7/16            | 87 |

### Viega ProPress Extended No-Stop Couplings

| Tube Diameter (in) | Minimum Insertion |    | Maximum Insertion |    |
|--------------------|-------------------|----|-------------------|----|
|                    | in                | mm | in                | mm |
| 1/2                | 3/4               | 19 | 2 1/4             | 57 |
| 3/4                | 7/8               | 23 | 2 5/8             | 67 |
| 1                  | 7/8               | 23 | 2 7/8             | 73 |
| 1 1/4              | 1                 | 26 | 3 1/8             | 80 |
| 1 1/2              | 1 7/16            | 37 | 3 5/16            | 84 |
| 2                  | 1 9/16            | 40 | 3 3/4             | 95 |

## Soldering or Brazing

### Using ProPress in Line with Existing Fittings

Maintain proper distances when installing a ProPress fitting near an existing soldered or brazed fitting.

| Tube Diameter (in) | Minimum Distance from Soldered |    | Minimum Distance from Brazed |     |
|--------------------|--------------------------------|----|------------------------------|-----|
|                    | in                             | mm | in                           | mm  |
| 1/2                | 1/4                            | 7  | 1                            | 26  |
| 3/4                | 1/4                            | 7  | 1 1/2                        | 38  |
| 1                  | 7/16                           | 11 | 2                            | 51  |
| 1 1/4              | 7/16                           | 11 | 2 1/2                        | 64  |
| 1 1/2              | 5/8                            | 16 | 3                            | 76  |
| 2                  | 3/4                            | 19 | 4                            | 102 |
| 2 1/2              | 1/4                            | 7  | 5                            | 127 |
| 3                  | 1/4                            | 7  | 6                            | 153 |
| 4                  | 1/4                            | 7  | 8                            | 204 |

### Soldering or Brazing in Line with Existing ProPress Fitting

To prevent damage to the sealing element and ensure proper sealing of the soldered/brazed joint and the press connection, maintain proper soldering/brazing distances from the fitting.

| Tube Diameter (in) | Soldering Minimum Distance |     | Brazed Minimum Distance |     |
|--------------------|----------------------------|-----|-------------------------|-----|
|                    | in                         | mm  | in                      | mm  |
| 1/2                | 1 1/2                      | 38  | 4 1/2                   | 114 |
| 3/4                | 2 1/4                      | 57  | 6 3/4                   | 172 |
| 1                  | 3                          | 76  | 9                       | 229 |
| 1 1/4              | 3 3/4                      | 95  | 11 1/4                  | 286 |
| 1 1/2              | 4 1/2                      | 114 | 13 1/2                  | 343 |
| 2                  | 6                          | 153 | 18                      | 457 |
| 2 1/2              | 7 1/2                      | 191 | 22 1/2                  | 572 |
| 3                  | 9                          | 229 | 27                      | 686 |
| 4                  | 12                         | 305 | 36                      | 915 |

## Welding

### Welding Adjacent to a Press Fitting

To prevent damage to the sealing element, maintain proper welding distances from the fitting. If welding adjacent to the connection, weld a minimum of four inches away.

### Welding Requirements

The installer should take precautions to keep the ProPress connection cool:

- Wrap the connection with a cold wet rag.
- Protect the connection with a weld blanket.
- Prefabricate solder connections/welded fittings prior to installing the press fitting. (Ensure tube has cooled before installing the press fitting.)
- Apply heat sink gel or spray or spot freezing.

## General Installation Notes

### Expansion

Thermal expansion in installed systems generates stress on tubing and appliance connectors. Compensation must be allowed for expansion and contraction that may occur within the tubing. Expansion joints or mechanical expansion compensators may be used to alleviate these stresses.

### Electrical Bonding

When properly installed, ProPress fittings comply with Section 1211.15 Electrical Bonding and Grounding of the Uniform Plumbing Code.

The mechanical press provides continuous metal-to-metal contact between fitting and tube. The press ensures the continuity of the bonding through this contact.

### Exposure to Freezing Temperatures

Viega ProPress systems with EPDM sealing elements can be installed in ambient temperatures down to 0°F. When the contents could freeze, tubing must be protected per acceptable engineering practices, codes, and as required by local code.

## Underground Installations

Viega ProPress fitting systems with copper tubing are approved for underground installations. However, installations must meet all state and local codes, including those for underground. Proper authorization must be obtained from the Authority Having Jurisdiction prior to installation.

## Concealed Spaces

The Viega ProPress fitting system has been approved for use in concealed spaces. Specific performance tests were conducted to evaluate the fittings for use in concealed spaces. Concealed tubing and fittings shall be protected from puncture threats.

## Corrosion Protection

Viega ProPress fittings exposed to corrosive action, such as soil conditions or moisture, must be protected in an approved manner in accordance with NFPA 54 Section 404.8, NACE Standard RP0169-2002 Section 5, 2009 UPC Chapter 6 Section 609.3.1, 2009 UMC Chapter 13 Section 1312.1.3, or by satisfying local code requirements. In addition, systems should be properly sized to minimize the risk of erosion corrosion resulting from excessive velocities.

## Pressure Surges

- Pressure surges or transients from fast-acting valves, pump surges, and other sources that result in water hammer may cause damage to many system components, including press fittings.
- When fast-acting valves and/or pumps are incorporated into a system, the designer and installer should isolate press fittings from sharp pressure surges.

## Transition Fittings – Threaded

The Viega ProPress systems can be joined with off-the-shelf threaded fittings made of non-ferrous metals. In this regard:

- The threaded connection is made first.
- The press connection is made second.

This process avoids unnecessary torsion on the press fitting.

## Transition Fittings – Flange

When using Viega flanges, bolt the flange end in place prior to pressing the fitting to the tube.

## Rotating a Pressed Fitting

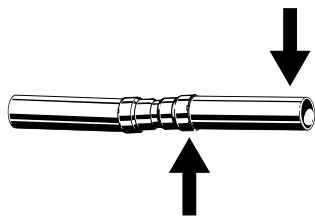
Once a ProPress fitting has been pressed, it can be rotated (not by hand); but once rotated more than five degrees, the fitting should be re-pressed to restore resistance to rotational movement. If the fitting is re-pressed, care should be taken to align the flat sides on the jaw with those on the fitting.

## Deflection

The pressing process can cause deflection (angular misalignment) to occur. When pressing Viega ProPress fittings in a system, the deformation of the fitting is constant. This allows for a consistent leak-free joint every time and is a result of the pressing technique.

Deflection occurs in the same way for every fitting. The fitting being pressed will move in the direction of the jaw or ring opening.

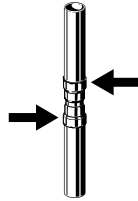
- Since the fitting will deflect toward the opening of the jaw or ring, the



- tube end will deflect in the opposite direction.
- By counteracting the fitting movement, one can minimize the deflection of the fitting and ultimately the tube.
- When using struts and clamps, deflection is minimized and nearly eliminated, depending on clamp spacing.

## Controlling Deflection

Deflection while pressing can be minimized by utilizing the following installation practices.

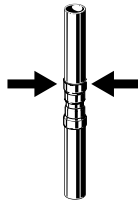
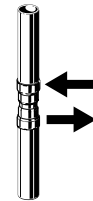


### Alternate Press Directions

- Press one end of fitting.
- Make second press on other end of fitting from the opposite side.

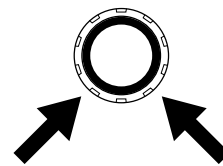
### Push-Pull Method

- Rings = Push on press tool.
  - Jaws = Pull on press tool.
- The press tool can be feathered using the trigger as needed to apply pulling or pushing force to control deflection.



### Re-Press

- Press the fitting, once on each side (that is, re-press the fitting a second time on the opposite side).
- Pressing the same connection from the opposite side will usually straighten misalignment between the tube and fitting.

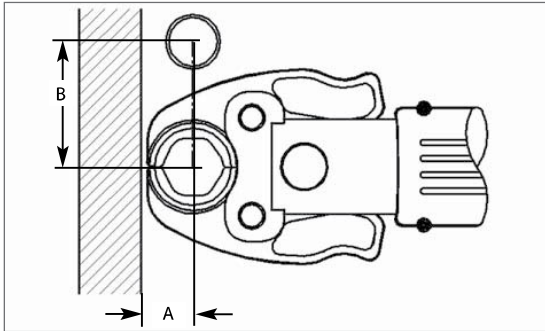


- When pressing overhead piping, it may be inconvenient to alternate sides for each press.
- The natural weight of the piping plus pressing on opposite sides at a 45-degree angle should adequately eliminate deflection.
- This technique can also be used for any horizontal piping and when working above the piping.

## Tool Clearances

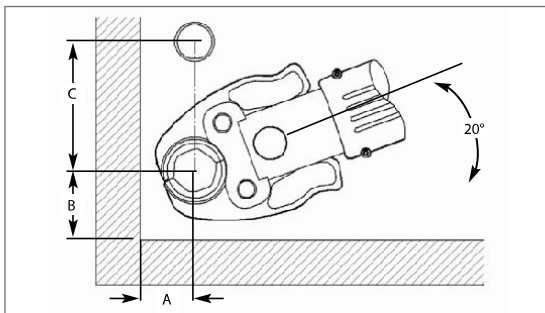
Minimum distances should be taken into consideration during planning in order to avoid space constraints during installation.

### ProPress Standard Jaw Clearance



| Tube Diameter | A minimum | B minimum |
|---------------|-----------|-----------|
| 1/2"          | 3/4"      | 1 5/8"    |
| 3/4"          | 7/8"      | 2 1/8"    |
| 1"            | 1"        | 2 1/2"    |
| 1 1/4"        | 1 1/8"    | 2 7/8"    |
| 1 1/2"        | 1 3/4"    | 3 1/2"    |
| 2"            | 2"        | 4 3/8"    |

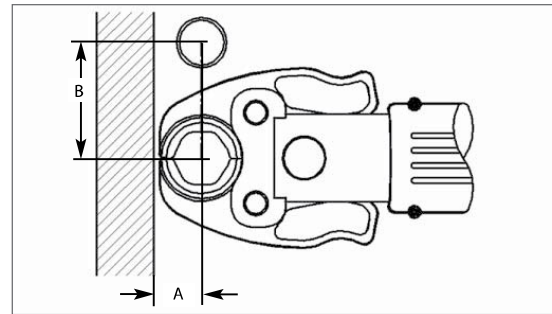
### ProPress Standard Jaw Clearance Between Tube, Wall, and Floor



| Tube Diameter | A minimum | B minimum | C minimum |
|---------------|-----------|-----------|-----------|
| 1/2"          | 7/8"      | 1 3/8"    | 2 1/2"    |
| 3/4"          | 1"        | 1 1/2"    | 2 1/2"    |
| 1"            | 1 1/8"    | 1 3/4"    | 3"        |
| 1 1/4"        | 1 1/4"    | 2 1/4"    | 3 3/8"    |
| 1 1/2"        | 1 7/8"    | 2 1/2"    | 3 3/4"    |
| 2"            | 2 1/8"    | 3 1/8"    | 5"        |

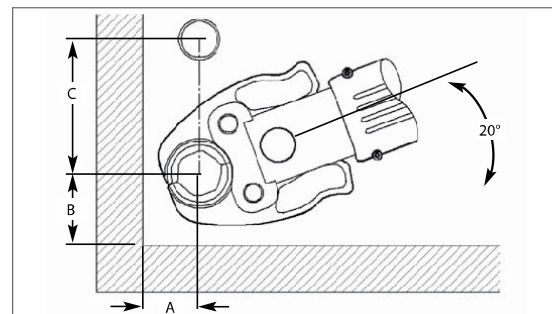
Ensure that the space required for system pressing tools is available if Viega ProPress fittings will be installed immediately upstream or downstream from wall or floor penetrations.

### ProPress Compact Jaw Clearance



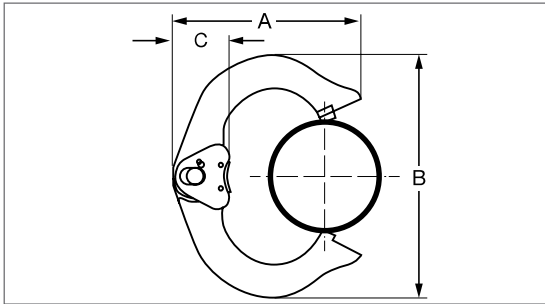
| Tube Diameter | A minimum | B minimum |
|---------------|-----------|-----------|
| 1/2"          | 3/4"      | 2"        |
| 3/4"          | 7/8"      | 2 3/8"    |
| 1"            | 7/8"      | 2 5/8"    |
| 1 1/4"        | 1 1/8"    | 3 1/8"    |

### ProPress Compact Jaw Clearance Between Tube, Wall, and Floor



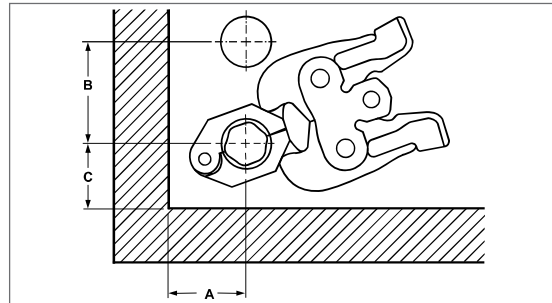
| Tube Diameter | A minimum | B minimum | C minimum |
|---------------|-----------|-----------|-----------|
| 1/2"          | 7/8"      | 1 3/8"    | 2 1/2"    |
| 3/4"          | 1"        | 1 1/2"    | 2 3/4"    |
| 1"            | 1 1/8"    | 1 5/8"    | 3"        |
| 1 1/4"        | 1 5/8"    | 2 1/8"    | 3 3/8"    |

## ProPress Ring Dimensions



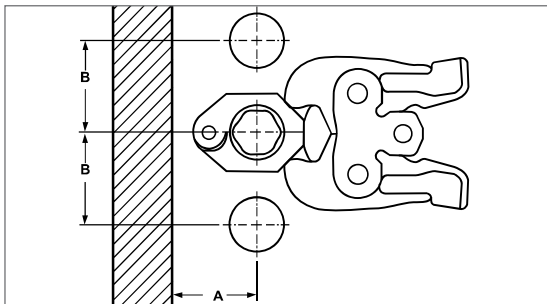
| Tube Diameter | A minimum | B minimum | C minimum |
|---------------|-----------|-----------|-----------|
| 1/2"          | 2 1/4"    | 2 1/8"    | 1 1/16"   |
| 3/4"          | 2 11/16"  | 2 7/8"    | 1 1/8"    |
| 1"            | 2 15/16"  | 3 5/16"   | 1 3/16"   |
| 1 1/4"        | 3 5/16"   | 3 7/8"    | 1 3/16"   |
| 1 1/2"        | 3 11/16"  | 4 5/16"   | 1 3/16"   |
| 2"            | 4 7/16"   | 5 7/16"   | 1 3/16"   |

## ProPress Rings With V1 Actuator Clearance Between Tube, Wall, and Floor



| Tube Diameter | A minimum | B minimum | C minimum |
|---------------|-----------|-----------|-----------|
| 1/2"          | 1 5/8"    | 3 9/16"   | 2 5/16"   |
| 3/4"          | 1 3/4"    | 3 5/8"    | 2 1/8"    |
| 1"            | 2"        | 3 13/16"  | 2 3/16"   |
| 1 1/4"        | 2 3/16"   | 3 3/4"    | 2 1/8"    |

## ProPress Rings With V1 Actuator Clearance



| Tube Diameter | A minimum | B minimum |
|---------------|-----------|-----------|
| 1/2"          | 1 5/8"    | 2 3/16"   |
| 3/4"          | 1 3/4"    | 2 3/16"   |
| 1"            | 2"        | 1 5/8"    |
| 1 1/4"        | 2 3/16"   | 2 15/16"  |

## ProPress Rings With V2 Actuator Clearance Between Tube, Wall, and Floor

| Tube Diameter | A minimum | B minimum | C minimum |
|---------------|-----------|-----------|-----------|
| 1 1/2"        | 2 3/8"    | 5"        | 2 3/16"   |
| 2"            | 2 9/16"   | 4 3/4"    | 3 9/16"   |

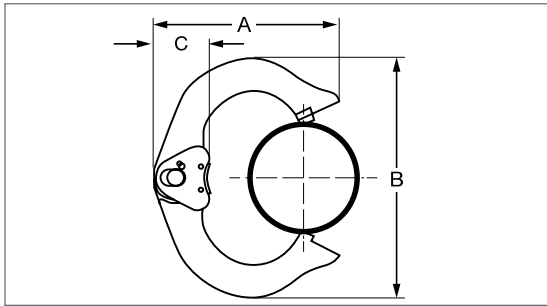
## ProPress Rings With C1 Actuator Clearance Between Tube, Wall, and Floor

| Tube Diameter | A minimum | B minimum | C minimum |
|---------------|-----------|-----------|-----------|
| 1/2"          | 1 5/8"    | 3 1/4"    | 2"        |
| 3/4"          | 1 3/4"    | 3 1/4"    | 1 7/8"    |
| 1"            | 2"        | 3 1/4"    | 1 7/8"    |
| 1 1/4"        | 2 3/16"   | 3 3/8"    | 1 7/8"    |

## ProPress Rings With V2 Actuator Clearance

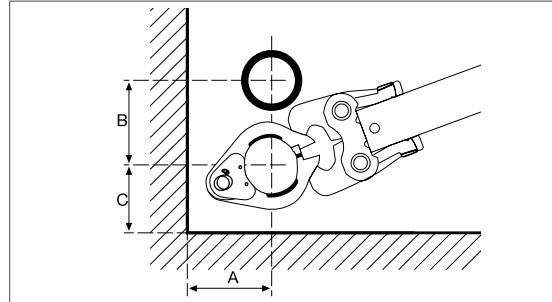
| Tube Diameter | A minimum | B minimum |
|---------------|-----------|-----------|
| 1 1/2"        | 2 3/8"    | 3 5/16"   |
| 2"            | 2 9/16"   | 4 1/8"    |

## ProPress XL-C Ring Dimensions



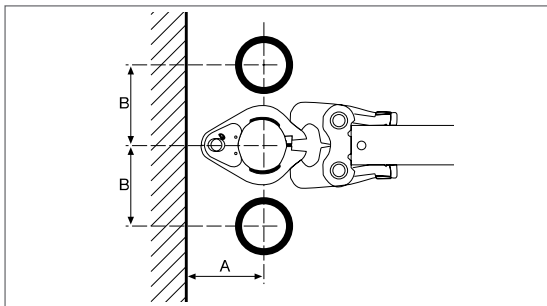
| Tube Diameter | A minimum                        | B minimum                         | C minimum                        |
|---------------|----------------------------------|-----------------------------------|----------------------------------|
| 2½"           | 6¾"                              | 6 <sup>15</sup> / <sub>16</sub> " | 2 <sup>7</sup> / <sub>16</sub> " |
| 3"            | 7 <sup>7</sup> / <sub>16</sub> " | 8 <sup>13</sup> / <sub>16</sub> " | 2 <sup>7</sup> / <sub>16</sub> " |
| 4"            | 8 <sup>1</sup> / <sub>16</sub> " | 10 <sup>7</sup> / <sub>16</sub> " | 2 <sup>7</sup> / <sub>16</sub> " |

## ProPress XL-C Ring Clearance Between Tube, Wall, and Floor



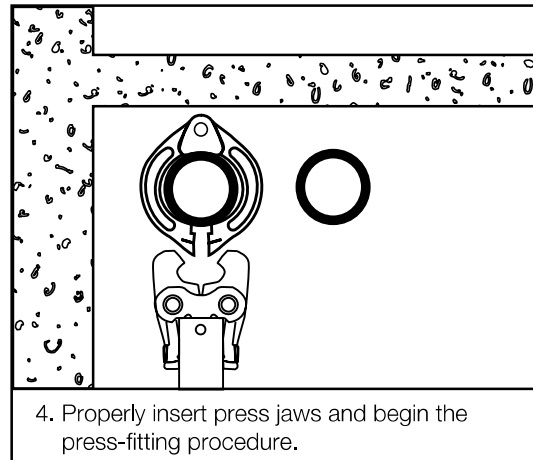
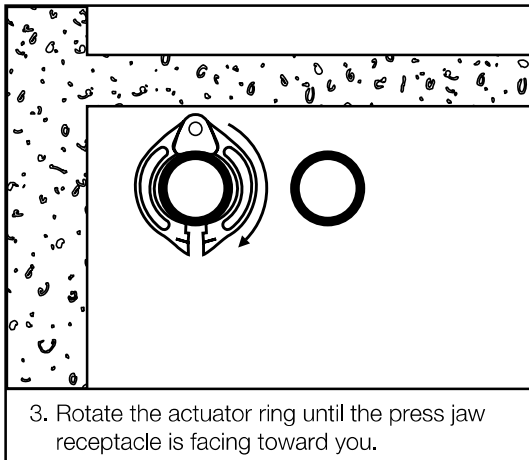
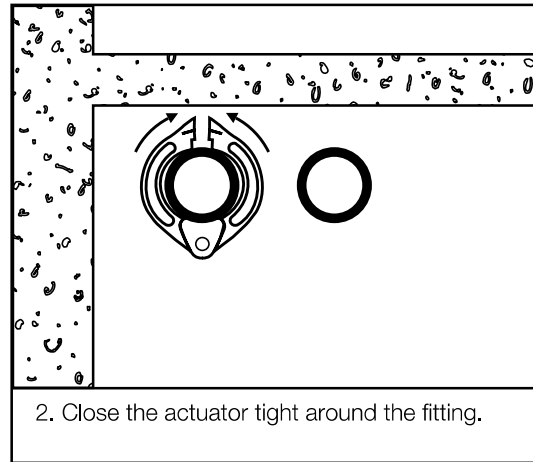
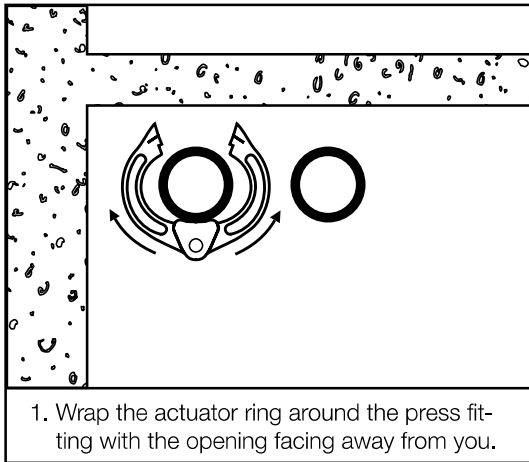
| Tube Diameter | A minimum                       | B minimum | C minimum                       |
|---------------|---------------------------------|-----------|---------------------------------|
| 2½"           | 4 <sup>1</sup> / <sub>8</sub> " | 6"        | 4 <sup>1</sup> / <sub>2</sub> " |
| 3"            | 4 <sup>3</sup> / <sub>8</sub> " | 7"        | 4 <sup>7</sup> / <sub>8</sub> " |
| 4"            | 5"                              | 8"        | 5 <sup>3</sup> / <sub>4</sub> " |

## ProPress XL-C Ring Clearance



| Tube Diameter | A minimum                       | B minimum |
|---------------|---------------------------------|-----------|
| 2½"           | 4 <sup>1</sup> / <sub>8</sub> " | 6"        |
| 3"            | 4 <sup>3</sup> / <sub>8</sub> " | 7"        |
| 4"            | 5"                              | 8"        |

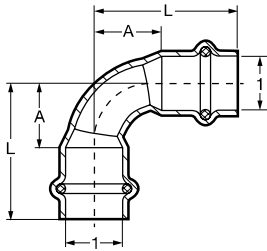
### Pressing with Ring and Actuator in Tight Quarters



**Dimensional Documentation**  
**ProPress Fittings**

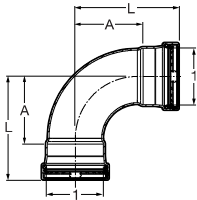


## Viega ProPress 90° Elbow Copper P x P – Model 2916



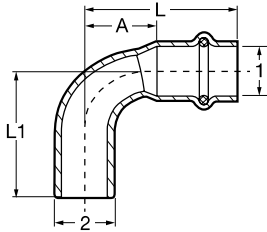
| Part No. | Size (in)     | A (in) |        | L (in) |         |
|----------|---------------|--------|--------|--------|---------|
|          |               | 1      | 1      | Dec    | Frac    |
| 77317    | 1/2 x 1/2     | 0.75   | 3/4    | 1.50   | 1 1/2   |
| 77022    | 3/4 x 3/4     | 0.76   | 3/4    | 1.67   | 1 11/16 |
| 77027    | 1 x 1         | 1.28   | 1 1/4  | 2.19   | 2 3/16  |
| 77032    | 1 1/4 x 1 1/4 | 1.28   | 1 1/4  | 2.31   | 2 5/16  |
| 77037    | 1 1/2 x 1 1/2 | 1.29   | 1 5/16 | 2.72   | 2 3/4   |
| 77042    | 2 x 2         | 2.16   | 2 3/16 | 3.74   | 3 3/4   |

## Viega ProPress 90° Elbow P x P – Model 0916XL



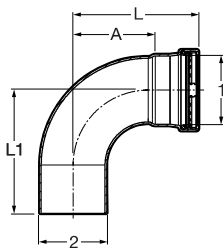
| Part No. | Size (in)     | A (in) |        | L (in) |       |
|----------|---------------|--------|--------|--------|-------|
|          |               | 1      | 1      | Dec    | Frac  |
| 20623    | 2 1/2 x 2 1/2 | 3.19   | 3 3/16 | 4.88   | 4 7/8 |
| 20628    | 3 x 3         | 3.76   | 3 3/4  | 5.73   | 5 3/4 |
| 20633    | 4 x 4         | 4.90   | 4 7/8  | 7.26   | 7 1/4 |

## Viega ProPress 90° Street Elbow Copper P x FTG – Model 2916.1



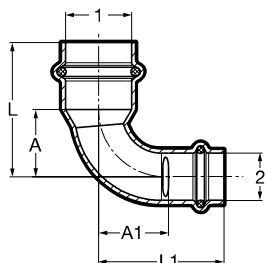
| Part No. | Size (in) |       | A (in) |        | L (in) |         | L1 (in) |         |
|----------|-----------|-------|--------|--------|--------|---------|---------|---------|
|          | 1         | 2     | Dec    | Frac   | Dec    | Frac    | Dec     | Frac    |
| 77347    | 1/2       | 1/2   | 0.75   | 3/4    | 1.50   | 1 1/2   | 1.54    | 1 9/16  |
| 77052    | 3/4       | 3/4   | 0.76   | 3/4    | 1.67   | 1 11/16 | 1.83    | 1 13/16 |
| 77057    | 1         | 1     | 1.28   | 1 1/4  | 2.19   | 2 3/16  | 2.27    | 2 1/4   |
| 77062    | 1 1/4     | 1 1/4 | 1.28   | 1 1/4  | 2.31   | 2 5/16  | 2.48    | 2 1/2   |
| 77067    | 1 1/2     | 1 1/2 | 1.29   | 1 5/16 | 2.72   | 2 3/4   | 2.80    | 2 13/16 |
| 77072    | 2         | 2     | 2.16   | 2 3/16 | 3.74   | 3 3/4   | 3.78    | 3 3/4   |

## Viega ProPress 90° Street Elbow P x FTG – Model 0916.1XL



| Part No. | Size (in) |       | A (in) |        | L (in) |       | L1 (in) |         |
|----------|-----------|-------|--------|--------|--------|-------|---------|---------|
|          | 1         | 2     | Dec    | Frac   | Dec    | Frac  | Dec     | Frac    |
| 20638    | 2 1/2     | 2 1/2 | 3.19   | 3 3/16 | 4.88   | 4 7/8 | 4.80    | 4 13/16 |
| 20643    | 3         | 3     | 3.76   | 3 3/4  | 5.73   | 5 3/4 | 5.63    | 5 5/8   |
| 20648    | 4         | 4     | 4.90   | 4 7/8  | 7.26   | 7 1/4 | 7.13    | 7 1/8   |

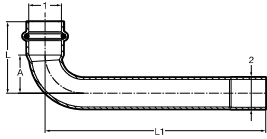
## Viega ProPress 90° Reducing Elbow Copper P x P – Model 2916.3



| Part No. | Size (in) |     | A (in) |        | A1 (in) |        | L (in) |         | L1 (in) |         |
|----------|-----------|-----|--------|--------|---------|--------|--------|---------|---------|---------|
|          | 1         | 2   | Dec    | Frac   | Dec     | Frac   | Dec    | Frac    | Dec     | Frac    |
| 77325    | 3/4       | 1/2 | 0.91   | 15/16  | 0.94    | 15/16  | 1.81   | 1 13/16 | 1.69    | 1 11/16 |
| 77330    | 1         | 3/4 | 1.20   | 1 3/16 | 1.30    | 1 5/16 | 2.11   | 2 1/8   | 2.21    | 2 3/16  |

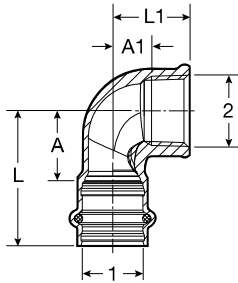


## Viega ProPress 90° Extended Street Elbow Copper P x FTG – Model 2947



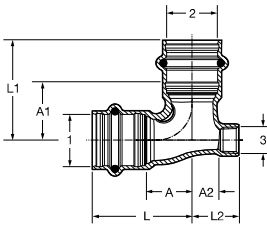
| Part No. | Size (in) |       | A (in) |      | L (in) |         | L1 (in) |      |
|----------|-----------|-------|--------|------|--------|---------|---------|------|
|          | 1         | 2     | Dec    | Frac | Dec    | Frac    | Dec     | Frac |
| 77353    | 3/4       | x 3/4 | 1.02   | 1    | 1.93   | 1 15/16 | 5.98    | 6    |

## Viega ProPress 90° Elbow Zero Lead Bronze P x FPT – Model 2914.2ZL



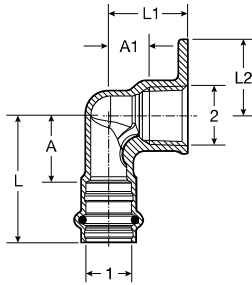
| Part No. | Size (in) |             | A (in) |         | A1 (in) |        | L (in) |        | L1 (in) |        |
|----------|-----------|-------------|--------|---------|---------|--------|--------|--------|---------|--------|
|          | 1         | 2           | Dec    | Frac    | Dec     | Frac   | Dec    | Frac   | Dec     | Frac   |
| 79520    | 1/2       | x 3/8 FPT   | 0.94   | 15/16   | 0.42    | 7/16   | 1.77   | 1 3/4  | 0.83    | 13/16  |
| 79525    | 1/2       | x 1/2 FPT   | 0.94   | 15/16   | 0.57    | 9/16   | 1.77   | 1 3/4  | 1.10    | 1 1/8  |
| 79530    | 1/2       | x 3/4 FPT   | 1.06   | 1 1/16  | 0.51    | 1/2    | 1.89   | 1 7/8  | 1.06    | 1 1/16 |
| 79535    | 3/4       | x 1/2 FPT   | 1.06   | 1 1/16  | 0.65    | 5/8    | 1.97   | 2      | 1.18    | 1 3/16 |
| 79540    | 3/4       | x 3/4 FPT   | 1.06   | 1 1/16  | 0.57    | 9/16   | 1.97   | 2      | 1.12    | 1 1/8  |
| 79545    | 1         | x 1/2 FPT   | 1.06   | 1 1/16  | 0.72    | 3/4    | 1.97   | 2      | 1.26    | 1 1/4  |
| 79550    | 1         | x 1 FPT     | 1.34   | 1 5/16  | 0.76    | 3/4    | 2.24   | 2 1/4  | 1.42    | 1 7/16 |
| 79560    | 1 1/4     | x 1 1/4 FPT | 1.54   | 1 9/16  | 0.89    | 7/8    | 2.56   | 2 9/16 | 1.57    | 1 9/16 |
| 79565    | 1 1/2     | x 1 1/2 FPT | 1.69   | 1 11/16 | 1.05    | 1 1/16 | 3.11   | 3 1/8  | 1.73    | 1 3/4  |
| 79570    | 2         | x 2 FPT     | 2.17   | 2 3/16  | 1.35    | 1 3/8  | 3.74   | 3 3/4  | 2.05    | 2 1/16 |

## Viega ProPress Vent Elbow Zero Lead Bronze P x P x FPT – Model 2917.3ZL



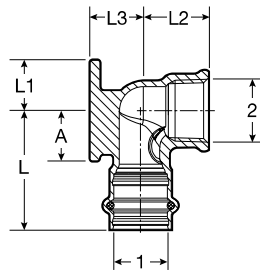
| Part No. | Size (in) |       |           | A (in) |        | A1 (in) |        | A2 (in) |      | L (in) |       | L1 (in) |       | L2 (in) |        |
|----------|-----------|-------|-----------|--------|--------|---------|--------|---------|------|--------|-------|---------|-------|---------|--------|
|          | 1         | 2     | 3         | Dec    | Frac   | Dec     | Frac   | Dec     | Frac | Dec    | Frac  | Dec     | Frac  | Dec     | Frac   |
| 79635    | 1/2       | x 1/2 | x 1/8 FPT | 0.67   | 1 1/16 | 0.67    | 1 1/16 | 0.44    | 7/16 | 1.50   | 1 1/2 | 1.50    | 1 1/2 | 0.71    | 1 1/16 |
| 79640    | 3/4       | x 3/4 | x 1/8 FPT | 0.83   | 1 3/16 | 0.83    | 1 3/16 | 0.54    | 9/16 | 1.73   | 1 3/4 | 1.73    | 1 3/4 | 0.81    | 1 3/16 |

## Viega ProPress 90° Hi Ear Elbow Zero Lead Bronze P x FPT – Model 2925.2ZL



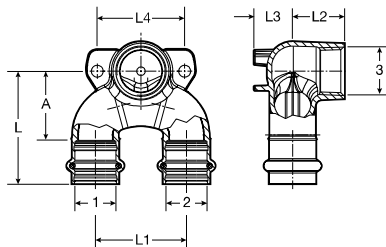
| Part No. | Size (in) |     | A (in) |       | A1 (in) |      | L (in) |      | L1 (in) |      | L2 (in) |       |
|----------|-----------|-----|--------|-------|---------|------|--------|------|---------|------|---------|-------|
|          | 1         | 2   | Dec    | Frac  | Dec     | Frac | Dec    | Frac | Dec     | Frac | Dec     | Frac  |
| 79205    | ½ x ½     | FPT | 0.94   | 15/16 | 0.57    | 9/16 | 1.77   | 1¾   | 1.10    | 1/8  | 1.07    | 11/16 |

## Viega ProPress 90° Drop Ear Elbow Zero Lead Bronze P X FPT – Model 2925.5ZL



| Part No. | Size (in) |     | A (in) |       | L (in) |      | L1 (in) |       | L2 (in) |      | L3 (in) |       |
|----------|-----------|-----|--------|-------|--------|------|---------|-------|---------|------|---------|-------|
|          | 1         | 2   | Dec    | Frac  | Dec    | Frac | Dec     | Frac  | Dec     | Frac | Dec     | Frac  |
| 79185    | ½ x ¾     | FPT | 0.94   | 15/16 | 1.77   | 1¾   | 0.74    | ¾     | 0.83    | 3/16 | 0.67    | 11/16 |
| 79190    | ½ x ½     | FPT | 0.94   | 15/16 | 1.77   | 1¾   | 0.74    | ¾     | 1.10    | 1/8  | 0.67    | 11/16 |
| 79195    | ¾ x ¾     | FPT | 1.06   | 11/16 | 1.97   | 2    | 0.83    | 13/16 | 1.12    | 1/8  | 0.83    | 13/16 |

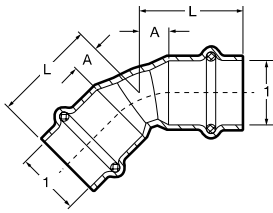
## Viega ProPress Double Drop Elbow Zero Lead Bronze P x P x FPT – Model 2928.7ZL



| Part No. | Size (in) |      |      | A (in) |      | L (in) |      | L1 (in) |      | L2 (in) |      | L3 (in) |      | L4 (in) |      |
|----------|-----------|------|------|--------|------|--------|------|---------|------|---------|------|---------|------|---------|------|
|          | 1         | 2    | 3    | Dec    | Frac | Dec    | Frac | Dec     | Frac | Dec     | Frac | Dec     | Frac | Dec     | Frac |
| 78800    | ½ x ½ x ½ | FNPT | 1.34 | 15/16  | 2.17 | 23/16  | 1.97 | 2       | 1.10 | 1/8     | 0.67 | 1/16    | 1.57 | 19/16   |      |
| 78802    | ¾ x ¾ x ½ | FNPT | 1.54 | 19/16  | 2.44 | 27/16  | 1.97 | 2       | 1.10 | 1/8     | 0.83 | 13/16   | 2.05 | 21/16   |      |
| 78801    | ¾ x ¾ x ¾ | FNPT | 1.54 | 19/16  | 2.44 | 27/16  | 1.97 | 2       | 1.12 | 1/8     | 0.83 | 13/16   | 1.89 | 17/8    |      |
| 78803    | 1 x 1 x ½ | FNPT | 1.77 | 1¾     | 2.68 | 211/16 | 2.36 | 2¾      | 1.10 | 1/8     | 0.87 | 7/8     | 2.52 | 11/2    |      |

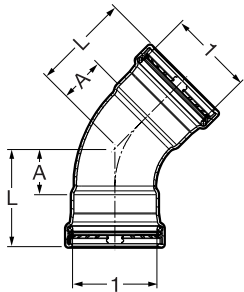


## Viega ProPress 45° Elbow Copper P x P – Model 2926



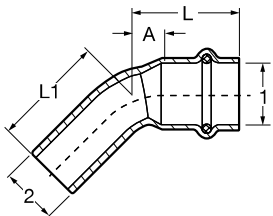
| Part No. | Size (in) |       | A (in) |      | L (in) |        |
|----------|-----------|-------|--------|------|--------|--------|
|          | 1         | 1     | Dec    | Frac | Dec    | Frac   |
| 77607    | 1/2       | 1/2   | 0.30   | 5/16 | 1.04   | 1 1/16 |
| 77023    | 3/4       | 3/4   | 0.36   | 3/8  | 1.26   | 1 1/4  |
| 77028    | 1         | 1     | 0.47   | 1/2  | 1.38   | 1 3/8  |
| 77033    | 1 1/4     | 1 1/4 | 0.58   | 9/16 | 1.61   | 1 5/8  |
| 77038    | 1 1/2     | 1 1/2 | 0.65   | 5/8  | 2.08   | 2 1/16 |
| 77043    | 2         | 2     | 0.86   | 7/8  | 2.44   | 2 7/16 |

## Viega ProPress 45° P x P – Model 0926XL



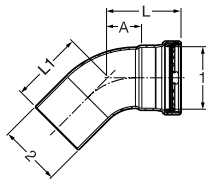
| Part No. | Size (in) |       | A (in) |         | L (in) |         |
|----------|-----------|-------|--------|---------|--------|---------|
|          | 1         | 1     | Dec    | Frac    | Dec    | Frac    |
| 20653    | 2 1/2     | 2 1/2 | 1.48   | 1 1/2   | 3.18   | 3 3/16  |
| 20658    | 3         | 3     | 1.73   | 1 3/4   | 3.70   | 3 11/16 |
| 20663    | 4         | 4     | 1.96   | 1 15/16 | 4.63   | 4 5/8   |

## Viega ProPress 45° Street Elbow Copper P x FTG – Model 2926.1



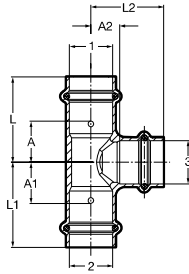
| Part No. | Size (in) |       | A (in) |      | L (in) |        | L1 (in) |         |
|----------|-----------|-------|--------|------|--------|--------|---------|---------|
|          | 1         | 2     | Dec    | Frac | Dec    | Frac   | Dec     | Frac    |
| 77637    | 1/2       | 1/2   | 0.31   | 5/16 | 1.06   | 1 1/16 | 1.10    | 1 1/8   |
| 77053    | 3/4       | 3/4   | 0.36   | 3/8  | 1.26   | 1 1/4  | 1.30    | 1 5/16  |
| 77058    | 1         | 1     | 0.47   | 1/2  | 1.38   | 1 3/8  | 1.49    | 1 1/2   |
| 77063    | 1 1/4     | 1 1/4 | 0.58   | 9/16 | 1.61   | 1 5/8  | 1.67    | 1 11/16 |
| 77068    | 1 1/2     | 1 1/2 | 0.65   | 5/8  | 2.08   | 2 1/16 | 2.04    | 2 1/16  |
| 77073    | 2         | 2     | 0.86   | 7/8  | 2.44   | 2 7/16 | 2.54    | 2 9/16  |

## Viega ProPress 45° Street Elbow P x FTG – Model 0926.1XL

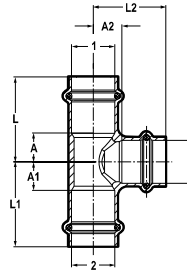


| Part No. | Size (in) |       | A (in) |       | L (in) |         | L1 (in) |        |
|----------|-----------|-------|--------|-------|--------|---------|---------|--------|
|          | 1         | 2     | Dec    | Frac  | Dec    | Frac    | Dec     | Frac   |
| 20668    | 2 1/2     | 2 1/2 | 1.48   | 1 1/2 | 3.18   | 3 3/16  | 3.10    | 3 1/8  |
| 20673    | 3         | 3     | 1.73   | 1 3/4 | 3.70   | 3 11/16 | 3.60    | 3 5/8  |
| 20678    | 4         | 4     | 2.23   | 2 1/4 | 4.59   | 4 9/16  | 4.45    | 4 7/16 |

## Viega ProPress Tee Copper P x P x P – Model 2918



This drawing applies to all part numbers in the below table except for 77377, 77387, 77402, 77412, 77432, and 77437.

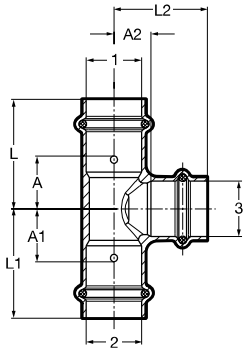


This drawing **only** applies to part numbers 77377, 77387, 77402, 77412, 77432, and 77437.

| Part No. | Size (in) |       |       | A (in) |        | A1 (in) |         | A2 (in) |        | L (in) |         | L1 (in) |         | L2 (in) |         |
|----------|-----------|-------|-------|--------|--------|---------|---------|---------|--------|--------|---------|---------|---------|---------|---------|
|          | 1         | 2     | 3     | Dec    | Frac   | Dec     | Frac    | Dec     | Frac   | Dec    | Frac    | Dec     | Frac    | Dec     | Frac    |
| 77377    | 1/2       | 1/2   | 1/2   | 0.52   | 1/2    | 0.52    | 1/2     | 0.50    | 1/2    | 1.50   | 1 1/2   | 1.50    | 1 1/2   | 1.25    | 1/4     |
| 77382    | 1/2       | 1/2   | 3/4   | 0.91   | 15/16  | 0.91    | 15/16   | 0.59    | 9/16   | 1.65   | 1 5/8   | 1.65    | 1 5/8   | 1.50    | 1 1/2   |
| 15493    | 1/2       | 1/2   | 1     | 1.10   | 1 1/8  | 1.10    | 1 1/8   | 0.55    | 9/16   | 1.85   | 1 7/8   | 1.85    | 1 7/8   | 1.46    | 1 7/16  |
| 77387    | 3/4       | 3/4   | 3/4   | 0.63   | 5/8    | 0.63    | 5/8     | 0.59    | 9/16   | 1.75   | 1 3/4   | 1.75    | 1 3/4   | 1.50    | 1 1/2   |
| 77392    | 3/4       | 1/2   | 1/2   | 0.69   | 1 1/16 | 0.98    | 1       | 0.63    | 5/8    | 1.59   | 1 9/16  | 1.73    | 1 3/4   | 1.38    | 1 3/8   |
| 77397    | 3/4       | 1/2   | 3/4   | 0.85   | 7/8    | 1.14    | 1 3/16  | 0.59    | 9/16   | 1.75   | 1 3/4   | 1.89    | 1 7/8   | 1.50    | 1 1/2   |
| 77402    | 3/4       | 3/4   | 1/2   | 0.46   | 7/16   | 0.46    | 7/16    | 0.63    | 5/8    | 1.59   | 1 9/16  | 1.59    | 1 9/16  | 1.38    | 1 3/8   |
| 77407    | 3/4       | 3/4   | 1     | 0.97   | 1      | 0.97    | 1       | 0.63    | 5/8    | 1.87   | 1 7/8   | 1.87    | 1 7/8   | 1.54    | 1 9/16  |
| 77412    | 1         | 1     | 1     | 0.71   | 1 1/16 | 0.71    | 1 1/16  | 0.79    | 13/16  | 1.87   | 1 7/8   | 1.87    | 1 7/8   | 1.69    | 1 11/16 |
| 22263    | 1         | 1/2   | 3/4   | 0.85   | 7/8    | 1.24    | 1 1/4   | 0.75    | 3/4    | 1.76   | 1 3/4   | 1.99    | 2       | 1.66    | 1 11/16 |
| 94767    | 1         | 1/2   | 1     | 0.97   | 1      | 1.52    | 1 1/2   | 0.79    | 13/16  | 1.87   | 1 7/8   | 2.26    | 2 1/4   | 1.69    | 1 11/16 |
| 77417    | 1         | 3/4   | 1/2   | 0.69   | 1 1/16 | 0.89    | 7/8     | 0.79    | 13/16  | 1.59   | 1 9/16  | 1.79    | 1 13/16 | 1.54    | 1 9/16  |
| 77422    | 1         | 3/4   | 3/4   | 0.85   | 7/8    | 1.04    | 1 1/16  | 0.75    | 3/4    | 1.75   | 1 3/4   | 1.95    | 1 15/16 | 1.65    | 1 5/8   |
| 77427    | 1         | 3/4   | 1     | 0.97   | 1      | 1.18    | 1 3/16  | 0.78    | 3/4    | 1.87   | 1 7/8   | 2.07    | 2 1/16  | 1.69    | 1 11/16 |
| 77432    | 1         | 1     | 1 1/2 | 0.47   | 1/2    | 0.47    | 1/2     | 0.79    | 13/16  | 1.59   | 1 9/16  | 1.59    | 1 9/16  | 1.54    | 1 9/16  |
| 77437    | 1         | 1     | 3/4   | 0.56   | 9/16   | 0.56    | 9/16    | 0.75    | 3/4    | 1.75   | 1 3/4   | 1.75    | 1 3/4   | 1.65    | 1 5/8   |
| 15488    | 1         | 1     | 1 1/4 | 1.16   | 1 3/16 | 1.16    | 1 3/16  | 0.84    | 13/16  | 2.07   | 2 1/16  | 2.07    | 2 1/16  | 1.87    | 1 7/8   |
| 77442    | 1 1/4     | 1 1/4 | 1 1/4 | 1.02   | 1      | 1.02    | 1       | 0.86    | 7/8    | 2.05   | 2 1/16  | 2.05    | 2 1/16  | 1.89    | 1 7/8   |
| 22253    | 1 1/4     | 1/2   | 1 1/4 | 1.02   | 1      | 1.77    | 1 3/4   | 0.87    | 7/8    | 2.05   | 2 1/16  | 2.52    | 2 1/2   | 1.89    | 1 7/8   |
| 22243    | 1 1/4     | 3/4   | 1/2   | 0.64   | 5/8    | 1.13    | 1 1/8   | 0.93    | 15/16  | 1.68   | 1 11/16 | 2.03    | 2 1/16  | 1.68    | 1 11/16 |
| 22258    | 1 1/4     | 3/4   | 3/4   | 0.76   | 3/4    | 1.30    | 1 5/16  | 0.87    | 7/8    | 1.80   | 1 13/16 | 2.21    | 2 3/16  | 1.78    | 1 3/4   |
| 22268    | 1 1/4     | 3/4   | 1     | 0.88   | 7/8    | 1.40    | 1 3/8   | 0.91    | 15/16  | 1.91   | 1 15/16 | 2.31    | 2 5/16  | 1.82    | 1 13/16 |
| 22248    | 1 1/4     | 3/4   | 1 1/4 | 1.02   | 1      | 1.54    | 1 9/16  | 0.86    | 7/8    | 2.05   | 2 1/16  | 2.45    | 2 7/16  | 1.89    | 1 7/8   |
| 22238    | 1 1/4     | 1     | 1 1/2 | 0.64   | 5/8    | 0.91    | 15/16   | 0.93    | 15/16  | 1.68   | 1 11/16 | 1.82    | 1 13/16 | 1.68    | 1 11/16 |
| 94762    | 1 1/4     | 1     | 3/4   | 0.76   | 3/4    | 1.14    | 1 1/8   | 0.87    | 7/8    | 1.79   | 1 13/16 | 2.05    | 2 1/16  | 1.77    | 1 3/4   |
| 14568    | 1 1/4     | 1     | 1     | 0.88   | 7/8    | 1.28    | 1 1/4   | 0.91    | 15/16  | 1.91   | 1 15/16 | 2.19    | 2 3/16  | 1.81    | 1 13/16 |
| 94757    | 1 1/4     | 1 1/4 | 1/2   | 0.65   | 5/8    | 0.65    | 5/8     | 0.93    | 15/16  | 1.67   | 1 11/16 | 1.67    | 1 11/16 | 1.67    | 1 11/16 |
| 77452    | 1 1/4     | 1 1/4 | 3/4   | 0.77   | 3/4    | 0.77    | 3/4     | 0.89    | 7/8    | 1.79   | 1 13/16 | 1.79    | 1 13/16 | 1.77    | 1 3/4   |
| 77447    | 1 1/4     | 1 1/4 | 1     | 0.88   | 7/8    | 0.88    | 7/8     | 0.90    | 7/8    | 1.91   | 1 15/16 | 1.91    | 1 15/16 | 1.81    | 1 13/16 |
| 77457    | 1 1/2     | 1 1/2 | 1 1/2 | 1.13   | 1 1/8  | 1.13    | 1 1/8   | 1.13    | 1 1/8  | 2.56   | 2 9/16  | 2.56    | 2 9/16  | 2.56    | 2 9/16  |
| 79660    | 1 1/2     | 1     | 3/4   | 0.67   | 1 1/16 | 1.39    | 1 3/8   | 1.16    | 1 3/16 | 2.17   | 2 3/16  | 2.44    | 2 7/16  | 2.05    | 2 1/16  |
| 15458    | 1 1/2     | 1     | 1     | 0.74   | 3/4    | 1.54    | 1 9/16  | 1.06    | 1 1/16 | 2.17   | 2 3/16  | 2.44    | 2 7/16  | 1.97    | 2       |
| 15463    | 1 1/2     | 1     | 1 1/2 | 1.13   | 1 1/8  | 1.83    | 1 13/16 | 1.13    | 1 1/8  | 2.56   | 2 9/16  | 2.74    | 2 3/4   | 2.56    | 2 9/16  |
| 22233    | 1 1/2     | 1 1/4 | 3/4   | 0.67   | 1 1/16 | 1.08    | 1 1/16  | 1.15    | 1 1/8  | 2.09   | 2 1/16  | 2.11    | 2 1/8   | 2.05    | 2 1/16  |
| 15453    | 1 1/2     | 1 1/4 | 1     | 0.74   | 3/4    | 1.29    | 1 5/16  | 1.18    | 1 3/16 | 2.17   | 2 3/16  | 2.32    | 2 5/16  | 2.09    | 2 1/16  |

Continued on next page

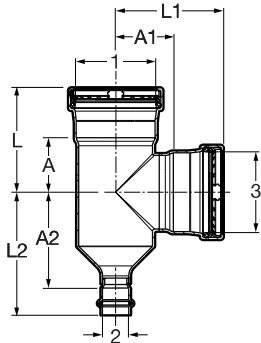
## Viega ProPress Tee Copper P x P x P – Model 2918



Continued from previous page

| Part No. | Size (in) |      |      | A (in) |       | A1 (in) |        | A2 (in) |       | L (in) |        | L1 (in) |        | L2 (in) |        |
|----------|-----------|------|------|--------|-------|---------|--------|---------|-------|--------|--------|---------|--------|---------|--------|
|          | 1         | 2    | 3    | Dec    | Frac  | Dec     | Frac   | Dec     | Frac  | Dec    | Frac   | Dec     | Frac   | Dec     | Frac   |
| 15483    | 1½        | x 1¼ | x 1¼ | 0.86   | 7/8   | 1.33    | 15/16  | 1.13    | 11/8  | 2.28   | 2¼     | 2.36    | 23/8   | 2.17    | 23/16  |
| 15448    | 1½        | x 1½ | x ½  | 0.47   | ½     | 0.47    | ½      | 1.10    | 11/8  | 1.89   | 17/8   | 1.89    | 17/8   | 1.85    | 17/8   |
| 77462    | 1½        | x 1½ | x ¾  | 0.66   | 11/16 | 0.66    | 11/16  | 1.14    | 11/8  | 2.09   | 21/16  | 2.09    | 21/16  | 2.05    | 21/16  |
| 77467    | 1½        | x 1½ | x 1  | 0.74   | ¾     | 0.74    | ¾      | 1.18    | 13/16 | 2.17   | 23/16  | 2.17    | 23/16  | 2.09    | 21/16  |
| 77472    | 1½        | x 1½ | x 1¼ | 0.86   | 7/8   | 0.86    | 7/8    | 1.13    | 11/8  | 2.28   | 2¼     | 2.28    | 2¼     | 2.17    | 23/16  |
| 77477    | 2         | x 2  | x 2  | 1.37   | 13/8  | 1.37    | 13/8   | 1.37    | 13/8  | 2.95   | 215/16 | 2.95    | 215/16 | 2.95    | 215/16 |
| 15518    | 2         | x 1¼ | x 1¼ | 0.94   | 15/16 | 1.84    | 113/16 | 1.33    | 15/16 | 2.52   | 2½     | 2.87    | 27/8   | 2.36    | 23/8   |
| 15513    | 2         | x 1½ | x ¾  | 0.70   | 11/16 | 1.25    | 1¼     | 1.38    | 13/8  | 2.28   | 2¼     | 2.68    | 211/16 | 2.28    | 2¼     |
| 15498    | 2         | x 1½ | x 1  | 0.82   | 13/16 | 1.45    | 27/16  | 1.38    | 13/8  | 2.40   | 23/8   | 2.87    | 27/8   | 2.28    | 2¼     |
| 15508    | 2         | x 1½ | x 1¼ | 0.94   | 15/16 | 1.55    | 19/16  | 1.49    | 1½    | 2.52   | 2½     | 2.97    | 3      | 2.52    | 2½     |
| 15503    | 2         | x 1½ | x 1½ | 1.13   | 11/8  | 1.65    | 15/8   | 1.37    | 13/8  | 2.72   | 2¾     | 3.07    | 31/16  | 2.80    | 213/16 |
| 22228    | 2         | x 1½ | x 2  | 1.38   | 13/8  | 1.89    | 17/8   | 1.38    | 13/8  | 2.95   | 215/16 | 3.33    | 35/16  | 2.95    | 215/16 |
| 15538    | 2         | x 2  | x ½  | 0.54   | 9/16  | 0.54    | 9/16   | 1.30    | 15/16 | 2.13   | 21/8   | 2.13    | 21/8   | 2.05    | 21/16  |
| 94777    | 2         | x 2  | x ¾  | 0.79   | 13/16 | 0.79    | 13/16  | 1.26    | 1¼    | 2.37   | 23/8   | 2.37    | 23/8   | 2.17    | 23/16  |
| 94772    | 2         | x 2  | x 1  | 0.91   | 15/16 | 0.91    | 15/16  | 1.30    | 15/16 | 2.49   | 2½     | 2.49    | 2½     | 2.21    | 23/16  |
| 77487    | 2         | x 2  | x 1¼ | 1.04   | 11/16 | 1.04    | 11/16  | 1.37    | 13/8  | 2.62   | 25/8   | 2.62    | 25/8   | 2.40    | 23/8   |
| 77482    | 2         | x 2  | x 1½ | 1.13   | 11/8  | 1.13    | 11/8   | 1.37    | 13/8  | 2.72   | 2¾     | 2.72    | 2¾     | 2.80    | 213/16 |

## Viega ProPress Tee P x P x P – Model 0918XL

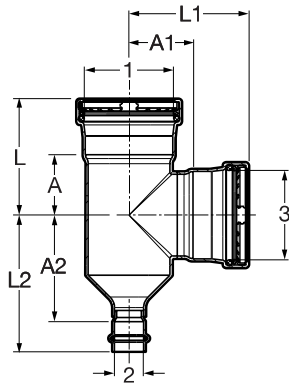


| Part No. | Size (in) |      |      | A (in) |        | A1 (in) |        | A2 (in) |        | L (in) |        | L1 (in) |        | L2 (in) |        |
|----------|-----------|------|------|--------|--------|---------|--------|---------|--------|--------|--------|---------|--------|---------|--------|
|          | 1         | 2    | 3    | Dec    | Frac   | Dec     | Frac   | Dec     | Frac   | Dec    | Frac   | Dec     | Frac   | Dec     | Frac   |
| 22317    | 2½        | x ¾  | x 2½ | 1.83   | 113/16 | 1.91    | 115/16 | 3.35    | 33/8   | 3.52   | 3½     | 3.60    | 35/8   | 4.25    | 4¼     |
| 20689    | 2½        | x 1  | x 2½ | 1.83   | 113/16 | 1.91    | 115/16 | 3.25    | 3¼     | 3.52   | 3½     | 3.60    | 35/8   | 4.15    | 41/8   |
| 20694    | 2½        | x 1¼ | x 2½ | 1.83   | 113/16 | 1.91    | 115/16 | 3.20    | 13/16  | 3.52   | 3½     | 3.60    | 35/8   | 4.23    | 4¼     |
| 20699    | 2½        | x 1½ | x 2½ | 1.83   | 113/16 | 1.91    | 115/16 | 3.14    | 21/8   | 3.52   | 3½     | 3.60    | 35/8   | 4.57    | 49/16  |
| 22316    | 2½        | x 2  | x ¾  | 1.04   | 11/16  | 1.76    | 1¾     | 1.59    | 19/16  | 2.74   | 2¾     | 2.67    | 211/16 | 3.17    | 33/16  |
| 20709    | 2½        | x 2  | x 1  | 1.04   | 11/16  | 1.77    | 1¾     | 1.65    | 15/8   | 2.74   | 2¾     | 2.67    | 211/16 | 3.24    | 3¼     |
| 22283    | 2½        | x 2  | x 1½ | 1.30   | 15/16  | 1.78    | 1¾     | 2.07    | 21/16  | 2.99   | 3      | 3.20    | 13/16  | 3.66    | 311/16 |
| 22278    | 2½        | x 2  | x 2  | 1.50   | 1½     | 1.78    | 1¾     | 2.25    | 2¼     | 3.19   | 33/16  | 3.36    | 33/8   | 3.83    | 313/16 |
| 20714    | 2½        | x 2  | x 2½ | 1.83   | 113/16 | 1.91    | 115/16 | 2.41    | 27/16  | 3.52   | 3½     | 3.60    | 35/8   | 4.00    | 4      |
| 22311    | 2½        | x 2½ | x ½  | 0.91   | 15/16  | 1.60    | 15/8   | 0.91    | 15/16  | 2.60   | 25/8   | 2.35    | 23/8   | 2.60    | 25/8   |
| 22309    | 2½        | x 2½ | x ¾  | 0.91   | 15/16  | 1.66    | 111/16 | 0.91    | 15/16  | 2.60   | 25/8   | 2.56    | 29/16  | 2.60    | 25/8   |
| 22293    | 2½        | x 2½ | x 1  | 1.04   | 11/16  | 1.77    | 1¾     | 1.04    | 11/16  | 2.74   | 2¾     | 2.68    | 211/16 | 2.74    | 2¾     |
| 22288    | 2½        | x 2½ | x 1¼ | 1.16   | 13/16  | 1.76    | 1¾     | 1.16    | 13/16  | 2.85   | 27/8   | 2.79    | 213/16 | 2.85    | 27/8   |
| 20803    | 2½        | x 2½ | x 1½ | 1.30   | 15/16  | 1.78    | ¾      | 1.30    | 15/16  | 2.99   | 3      | 3.21    | 33/16  | 2.99    | 3      |
| 20688    | 2½        | x 2½ | x 2  | 1.54   | 19/16  | 1.75    | ¾      | 1.54    | 19/16  | 3.23   | 3¼     | 3.34    | 35/16  | 3.23    | 3¼     |
| 20683    | 2½        | x 2½ | x 2½ | 1.83   | 113/16 | 1.94    | 115/16 | 1.83    | 113/16 | 3.52   | 3½     | 3.63    | 35/8   | 3.52    | 3½     |
| 22318    | 3         | x ¾  | x 3  | 2.07   | 21/16  | 2.15    | 21/8   | 3.82    | 313/16 | 4.04   | 41/16  | 4.11    | 41/8   | 4.72    | 4¾     |
| 20724    | 3         | x 1  | x 3  | 2.07   | 21/16  | 2.15    | 21/8   | 3.96    | 315/16 | 4.04   | 41/16  | 4.11    | 41/8   | 4.86    | 47/8   |
| 20729    | 3         | x 1¼ | x 3  | 2.07   | 21/16  | 2.15    | 21/8   | 3.83    | 313/16 | 4.04   | 41/16  | 4.11    | 41/8   | 4.86    | 47/8   |
| 20727    | 3         | x 1½ | x 3  | 2.07   | 21/16  | 2.15    | 21/8   | 3.71    | 311/16 | 4.04   | 41/16  | 4.11    | 41/8   | 5.14    | 51/8   |
| 20732    | 3         | x 2  | x 2  | 1.56   | 19/16  | 2.03    | 21/16  | 2.33    | 25/16  | 3.52   | 3½     | 3.61    | 35/8   | 3.92    | 315/16 |
| 20734    | 3         | x 2  | x 2½ | 1.85   | 17/8   | 2.15    | 21/8   | 2.63    | 25/8   | 3.82   | 313/16 | 3.85    | 37/8   | 4.21    | 43/16  |
| 20739    | 3         | x 2  | x 3  | 2.07   | 21/16  | 2.15    | 21/8   | 2.84    | 213/16 | 4.04   | 41/16  | 4.11    | 41/8   | 4.43    | 47/16  |
| 20744    | 3         | x 2½ | x 2  | 1.56   | 19/16  | 2.03    | 21/16  | 2.07    | 21/16  | 3.52   | 3½     | 3.61    | 35/8   | 3.76    | 3¾     |
| 20749    | 3         | x 2½ | x 2½ | 1.85   | 17/8   | 2.15    | 21/8   | 2.56    | 29/16  | 3.82   | 313/16 | 3.85    | 37/8   | 4.25    | 4¼     |
| 20754    | 3         | x 2½ | x 3  | 2.07   | 21/16  | 2.15    | 21/8   | 2.78    | 2¾     | 4.04   | 41/16  | 4.11    | 41/8   | 4.47    | 4½     |
| 22315    | 3         | x 3  | x ½  | 0.93   | 15/16  | 1.85    | 17/8   | 0.93    | 15/16  | 2.89   | 27/8   | 2.60    | 25/8   | 2.89    | 27/8   |
| 22310    | 3         | x 3  | x ¾  | 0.93   | 15/16  | 1.91    | 115/16 | 0.93    | 15/16  | 2.89   | 27/8   | 2.81    | 213/16 | 2.89    | 27/8   |
| 22308    | 3         | x 3  | x 1  | 1.06   | 21/16  | 2.02    | 2      | 1.06    | 11/16  | 3.03   | 31/16  | 2.92    | 215/16 | 3.03    | 31/16  |
| 22313    | 3         | x 3  | x 1¼ | 1.18   | 13/16  | 2.01    | 2      | 1.18    | 13/16  | 3.15   | 31/8   | 3.04    | 31/16  | 3.15    | 31/8   |
| 20798    | 3         | x 3  | x 1½ | 1.32   | 15/16  | 2.03    | 21/16  | 1.32    | 15/16  | 3.29   | 35/16  | 3.45    | 37/16  | 3.29    | 35/16  |

Continued on next page



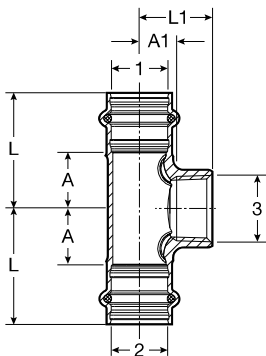
Viega ProPress Tee P x P x P – Model 0918XL



Continued from previous page

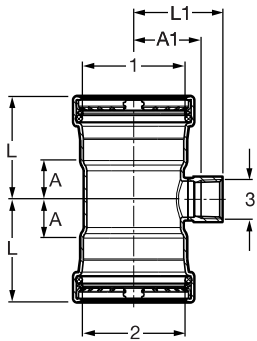
| Part No. | Size (in) |   |                               | A (in) |                                | A1 (in) |                                 | A2 (in) |                                 | L (in) |                                 | L1 (in) |                                 | L2 (in) |                                 |
|----------|-----------|---|-------------------------------|--------|--------------------------------|---------|---------------------------------|---------|---------------------------------|--------|---------------------------------|---------|---------------------------------|---------|---------------------------------|
|          | 1         | 2 | 3                             | Dec    | Frac                           | Dec     | Frac                            | Dec     | Frac                            | Dec    | Frac                            | Dec     | Frac                            | Dec     | Frac                            |
| 20698    | 3         | 3 | 2                             | 1.56   | 1 <sup>9</sup> / <sub>16</sub> | 2.00    | 2                               | 1.56    | 1 <sup>9</sup> / <sub>16</sub>  | 3.52   | 3 <sup>1</sup> / <sub>2</sub>   | 3.59    | 3 <sup>9</sup> / <sub>16</sub>  | 3.52    | 2 <sup>1</sup> / <sub>2</sub>   |
| 20703    | 3         | 3 | 2 <sup>1</sup> / <sub>2</sub> | 1.85   | 1 <sup>7</sup> / <sub>8</sub>  | 2.15    | 2 <sup>1</sup> / <sub>8</sub>   | 1.85    | 1 <sup>7</sup> / <sub>8</sub>   | 3.82   | 3 <sup>13</sup> / <sub>16</sub> | 3.85    | 3 <sup>7</sup> / <sub>8</sub>   | 3.82    | 3 <sup>13</sup> / <sub>16</sub> |
| 20693    | 3         | 3 | 3                             | 2.07   | 2 <sup>1</sup> / <sub>16</sub> | 2.21    | 2 <sup>3</sup> / <sub>16</sub>  | 2.07    | 2 <sup>1</sup> / <sub>16</sub>  | 4.04   | 4 <sup>1</sup> / <sub>16</sub>  | 4.18    | 4 <sup>3</sup> / <sub>16</sub>  | 4.04    | 4 <sup>1</sup> / <sub>16</sub>  |
| 20774    | 4         | 3 | 2                             | 1.59   | 1 <sup>9</sup> / <sub>16</sub> | 2.57    | 2 <sup>9</sup> / <sub>16</sub>  | 3.33    | 3 <sup>5</sup> / <sub>16</sub>  | 3.96   | 3 <sup>15</sup> / <sub>16</sub> | 4.15    | 4 <sup>1</sup> / <sub>8</sub>   | 5.22    | 5 <sup>1</sup> / <sub>4</sub>   |
| 20784    | 4         | 3 | 3                             | 2.11   | 2 <sup>1</sup> / <sub>8</sub>  | 2.66    | 2 <sup>11</sup> / <sub>16</sub> | 3.84    | 3 <sup>13</sup> / <sub>16</sub> | 4.47   | 4 <sup>1</sup> / <sub>2</sub>   | 4.63    | 4 <sup>5</sup> / <sub>8</sub>   | 5.81    | 5 <sup>13</sup> / <sub>16</sub> |
| 22314    | 4         | 4 | 1/2                           | 1.08   | 1 <sup>1</sup> / <sub>16</sub> | 2.35    | 2 <sup>3</sup> / <sub>8</sub>   | 1.08    | 1 <sup>1</sup> / <sub>16</sub>  | 3.45   | 3 <sup>7</sup> / <sub>16</sub>  | 3.10    | 3 <sup>1</sup> / <sub>8</sub>   | 3.45    | 3 <sup>7</sup> / <sub>16</sub>  |
| 22312    | 4         | 4 | 3/4                           | 1.08   | 1 <sup>1</sup> / <sub>16</sub> | 2.41    | 2 <sup>7</sup> / <sub>16</sub>  | 1.08    | 1 <sup>1</sup> / <sub>16</sub>  | 3.45   | 3 <sup>7</sup> / <sub>16</sub>  | 3.31    | 3 <sup>5</sup> / <sub>16</sub>  | 3.45    | 3 <sup>7</sup> / <sub>16</sub>  |
| 20794    | 4         | 4 | 1                             | 1.36   | 1 <sup>3</sup> / <sub>8</sub>  | 2.52    | 2 <sup>1</sup> / <sub>2</sub>   | 1.36    | 1 <sup>3</sup> / <sub>8</sub>   | 3.72   | 3 <sup>3</sup> / <sub>4</sub>   | 3.42    | 3 <sup>7</sup> / <sub>16</sub>  | 3.72    | 3 <sup>3</sup> / <sub>4</sub>   |
| 20795    | 4         | 4 | 1 <sup>1</sup> / <sub>4</sub> | 1.36   | 1 <sup>3</sup> / <sub>8</sub>  | 2.50    | 2 <sup>1</sup> / <sub>2</sub>   | 1.36    | 1 <sup>3</sup> / <sub>8</sub>   | 3.72   | 3 <sup>3</sup> / <sub>4</sub>   | 3.54    | 3 <sup>9</sup> / <sub>16</sub>  | 3.72    | 3 <sup>3</sup> / <sub>4</sub>   |
| 20808    | 4         | 4 | 1 <sup>1</sup> / <sub>2</sub> | 1.36   | 1 <sup>3</sup> / <sub>8</sub>  | 2.52    | 2 <sup>1</sup> / <sub>2</sub>   | 1.36    | 1 <sup>3</sup> / <sub>8</sub>   | 3.72   | 3 <sup>3</sup> / <sub>4</sub>   | 3.95    | 3 <sup>15</sup> / <sub>16</sub> | 3.72    | 3 <sup>3</sup> / <sub>4</sub>   |
| 20713    | 4         | 4 | 2                             | 1.59   | 1 <sup>9</sup> / <sub>16</sub> | 2.53    | 2 <sup>1</sup> / <sub>2</sub>   | 1.59    | 1 <sup>9</sup> / <sub>16</sub>  | 3.96   | 3 <sup>15</sup> / <sub>16</sub> | 4.11    | 4 <sup>1</sup> / <sub>8</sub>   | 3.96    | 3 <sup>15</sup> / <sub>16</sub> |
| 20718    | 4         | 4 | 2 <sup>1</sup> / <sub>2</sub> | 1.89   | 1 <sup>7</sup> / <sub>8</sub>  | 2.65    | 2 <sup>11</sup> / <sub>16</sub> | 1.89    | 1 <sup>7</sup> / <sub>8</sub>   | 4.25   | 4 <sup>1</sup> / <sub>4</sub>   | 4.35    | 4 <sup>3</sup> / <sub>8</sub>   | 4.25    | 4 <sup>1</sup> / <sub>4</sub>   |
| 20723    | 4         | 4 | 3                             | 2.11   | 2 <sup>1</sup> / <sub>8</sub>  | 2.69    | 2 <sup>11</sup> / <sub>16</sub> | 2.11    | 2 <sup>1</sup> / <sub>8</sub>   | 4.47   | 4 <sup>1</sup> / <sub>2</sub>   | 4.65    | 4 <sup>5</sup> / <sub>8</sub>   | 4.47    | 4 <sup>1</sup> / <sub>2</sub>   |
| 20708    | 4         | 4 | 4                             | 2.60   | 2 <sup>5</sup> / <sub>8</sub>  | 2.72    | 2 <sup>3</sup> / <sub>4</sub>   | 2.60    | 2 <sup>5</sup> / <sub>8</sub>   | 4.96   | 4 <sup>15</sup> / <sub>16</sub> | 5.09    | 5 <sup>1</sup> / <sub>16</sub>  | 4.96    | 4 <sup>15</sup> / <sub>16</sub> |

Viega ProPress Tee Zero Lead Bronze P x P x FPT – Model 2917.2ZL



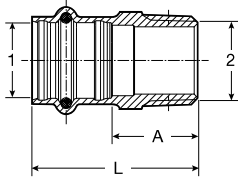
| Part No. | Size (in)                     |                               |     | A (in) |                                | A1 (in) |                                 | L (in) |                                 | L1 (in) |                                 |
|----------|-------------------------------|-------------------------------|-----|--------|--------------------------------|---------|---------------------------------|--------|---------------------------------|---------|---------------------------------|
|          | 1                             | 2                             | 3   | Dec    | Frac                           | Dec     | Frac                            | Dec    | Frac                            | Dec     | Frac                            |
| 79580    | 1/2                           | 1/2                           | 1/2 | 0.79   | 1 <sup>3</sup> / <sub>16</sub> | 0.69    | 1 <sup>1</sup> / <sub>16</sub>  | 1.61   | 1 <sup>5</sup> / <sub>8</sub>   | 1.30    | 1 <sup>5</sup> / <sub>16</sub>  |
| 79585    | 3/4                           | 3/4                           | 1/4 | 0.67   | 1 <sup>1</sup> / <sub>16</sub> | 0.79    | 1 <sup>3</sup> / <sub>16</sub>  | 1.57   | 1 <sup>9</sup> / <sub>16</sub>  | 1.18    | 1 <sup>3</sup> / <sub>16</sub>  |
| 79590    | 3/4                           | 3/4                           | 1/2 | 0.79   | 1 <sup>3</sup> / <sub>16</sub> | 0.88    | 7/8                             | 1.69   | 1 <sup>11</sup> / <sub>16</sub> | 1.42    | 1 <sup>7</sup> / <sub>16</sub>  |
| 79595    | 3/4                           | 3/4                           | 3/4 | 0.91   | 1 <sup>5</sup> / <sub>16</sub> | 0.59    | 9/16                            | 1.81   | 1 <sup>13</sup> / <sub>16</sub> | 1.14    | 1 <sup>1</sup> / <sub>8</sub>   |
| 79760    | 1                             | 1                             | 1/2 | 0.79   | 1 <sup>3</sup> / <sub>16</sub> | 1.04    | 1 <sup>1</sup> / <sub>16</sub>  | 1.69   | 1 <sup>11</sup> / <sub>16</sub> | 1.57    | 1 <sup>9</sup> / <sub>16</sub>  |
| 79765    | 1                             | 1                             | 3/4 | 0.91   | 1 <sup>5</sup> / <sub>16</sub> | 1.06    | 1 <sup>1</sup> / <sub>16</sub>  | 1.81   | 1 <sup>13</sup> / <sub>16</sub> | 1.61    | 1 <sup>5</sup> / <sub>8</sub>   |
| 79770    | 1 <sup>1</sup> / <sub>4</sub> | 1 <sup>1</sup> / <sub>4</sub> | 1/2 | 0.83   | 1 <sup>3</sup> / <sub>16</sub> | 1.16    | 1 <sup>3</sup> / <sub>16</sub>  | 1.85   | 1 <sup>7</sup> / <sub>8</sub>   | 1.69    | 1 <sup>11</sup> / <sub>16</sub> |
| 79775    | 1 <sup>1</sup> / <sub>4</sub> | 1 <sup>1</sup> / <sub>4</sub> | 3/4 | 0.95   | 1 <sup>5</sup> / <sub>16</sub> | 1.18    | 1 <sup>3</sup> / <sub>16</sub>  | 1.97   | 2                               | 1.73    | 1 <sup>3</sup> / <sub>4</sub>   |
| 79780    | 1 <sup>1</sup> / <sub>2</sub> | 1 <sup>1</sup> / <sub>2</sub> | 1/2 | 0.87   | 7/8                            | 1.24    | 1 <sup>1</sup> / <sub>4</sub>   | 2.28   | 2 <sup>1</sup> / <sub>4</sub>   | 1.77    | 1 <sup>13</sup> / <sub>16</sub> |
| 79785    | 1 <sup>1</sup> / <sub>2</sub> | 1 <sup>1</sup> / <sub>2</sub> | 3/4 | 0.94   | 1 <sup>5</sup> / <sub>16</sub> | 1.30    | 1 <sup>5</sup> / <sub>16</sub>  | 2.36   | 2 <sup>3</sup> / <sub>8</sub>   | 1.85    | 1 <sup>7</sup> / <sub>8</sub>   |
| 79790    | 2                             | 2                             | 1/2 | 0.98   | 1                              | 1.59    | 1 <sup>9</sup> / <sub>16</sub>  | 2.56   | 2 <sup>9</sup> / <sub>16</sub>  | 2.13    | 2 <sup>1</sup> / <sub>8</sub>   |
| 79795    | 2                             | 2                             | 3/4 | 1.06   | 1 <sup>1</sup> / <sub>16</sub> | 1.65    | 1 <sup>11</sup> / <sub>16</sub> | 2.64   | 2 <sup>5</sup> / <sub>8</sub>   | 2.20    | 2 <sup>3</sup> / <sub>16</sub>  |

## Viega ProPress Tee P x P x FPT – Model 0917.2XL



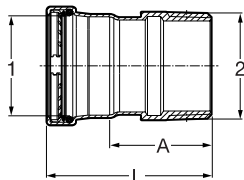
| Part No. | Size (in) |    |       | A (in) | A1 (in) | L (in) | L1 (in) |
|----------|-----------|----|-------|--------|---------|--------|---------|
|          | 1         | 2  | 3     |        |         |        |         |
| 20883    | 2½        | 2½ | ¾ FPT | 1.02   | 1.78    | 2.72   | 2.34    |
| 20878    | 2½        | 2½ | 2 FPT | 1.54   | 1.90    | 3.23   | 2.60    |
| 20893    | 3         | 3  | ¾ FPT | 1.04   | 2.03    | 3.01   | 2.59    |
| 20888    | 3         | 3  | 2 FPT | 1.56   | 2.16    | 3.52   | 2.85    |
| 20873    | 4         | 4  | ¾ FPT | 1.08   | 2.53    | 3.34   | 3.09    |
| 20868    | 4         | 4  | 2 FPT | 1.59   | 2.69    | 3.96   | 3.38    |

## Viega ProPress Adapter Zero Lead Bronze P x MPT – Model 2911ZL



| Part No. | Size (in) |        | A (in) |                                | L (in) |                                 |
|----------|-----------|--------|--------|--------------------------------|--------|---------------------------------|
|          | 1         | 2      | Dec    | Frac                           | Dec    | Frac                            |
| 79210    | ½         | ⅝ MPT  | 0.77   | ¾                              | 1.59   | 1 <sup>9</sup> / <sub>16</sub>  |
| 79215    | ½         | ½ MPT  | 0.89   | ⅞                              | 1.71   | 1 <sup>11</sup> / <sub>16</sub> |
| 79220    | ½         | ¾ MPT  | 1.00   | 1                              | 1.83   | 1 <sup>13</sup> / <sub>16</sub> |
| 79225    | ¾         | ½ MPT  | 1.02   | 1                              | 1.93   | 1 <sup>15</sup> / <sub>16</sub> |
| 79230    | ¾         | ¾ MPT  | 1.02   | 1                              | 1.93   | 1 <sup>15</sup> / <sub>16</sub> |
| 79235    | ¾         | 1 MPT  | 1.18   | 1 <sup>3</sup> / <sub>16</sub> | 2.09   | 2 <sup>1</sup> / <sub>16</sub>  |
| 79240    | 1         | ¾ MPT  | 1.18   | 1 <sup>3</sup> / <sub>16</sub> | 2.09   | 2 <sup>1</sup> / <sub>16</sub>  |
| 79245    | 1         | 1 MPT  | 1.26   | 1¼                             | 2.17   | 2 <sup>3</sup> / <sub>16</sub>  |
| 79250    | 1         | 1¼ MPT | 1.54   | 1 <sup>9</sup> / <sub>16</sub> | 2.44   | 2 <sup>7</sup> / <sub>16</sub>  |
| 79255    | 1¼        | 1 MPT  | 1.22   | 1¼                             | 2.24   | 2¼                              |
| 79260    | 1¼        | 1¼ MPT | 1.34   | 1 <sup>5</sup> / <sub>16</sub> | 2.36   | 2 <sup>3</sup> / <sub>8</sub>   |
| 79265    | 1¼        | 1½ MPT | 1.48   | 1½                             | 2.50   | 2½                              |
| 79270    | 1½        | 1¼ MPT | 1.34   | 1 <sup>5</sup> / <sub>16</sub> | 2.76   | 2 <sup>3</sup> / <sub>4</sub>   |
| 79275    | 1½        | 1½ MPT | 1.28   | 1¼                             | 2.70   | 2 <sup>11</sup> / <sub>16</sub> |
| 79280    | 1½        | 2 MPT  | 1.65   | 1 <sup>5</sup> / <sub>8</sub>  | 3.07   | 3 <sup>1</sup> / <sub>16</sub>  |
| 79285    | 2         | 1½ MPT | 1.54   | 1 <sup>9</sup> / <sub>16</sub> | 3.11   | 3 <sup>1</sup> / <sub>8</sub>   |
| 79290    | 2         | 2 MPT  | 1.50   | 1½                             | 3.07   | 3 <sup>1</sup> / <sub>16</sub>  |

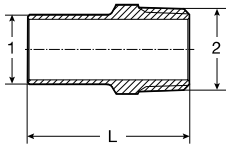
## Viega ProPress Adapter P x MPT – Model 0911XL



| Part No. | Size (in) |        | A (in) |                                 | L (in) |                                 |
|----------|-----------|--------|--------|---------------------------------|--------|---------------------------------|
|          | 1         | 2      | Dec    | Frac                            | Dec    | Frac                            |
| 20823    | 2½        | 2½ MPT | 2.76   | 2¾                              | 4.45   | 4 <sup>7</sup> / <sub>16</sub>  |
| 20828    | 3         | 3 MPT  | 2.84   | 2 <sup>13</sup> / <sub>16</sub> | 4.80   | 4 <sup>13</sup> / <sub>16</sub> |
| 20838    | 4         | 4 MPT  | 3.10   | 3⅞                              | 5.46   | 5 <sup>7</sup> / <sub>16</sub>  |

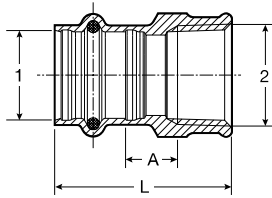


**Viega ProPress Adapter Zero Lead Bronze FTG x MPT – Model 2911.1ZL**



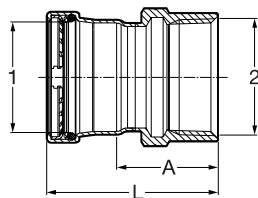
| Part No. | Size (in) |           | L (in) |         |
|----------|-----------|-----------|--------|---------|
|          | 1         | 2         | Dec    | Frac    |
| 79375    | 1/2       | 3/8 MPT   | 1.75   | 1 3/4   |
| 79380    | 1/2       | 1/2 MPT   | 1.95   | 1 15/16 |
| 79385    | 1/2       | 3/4 MPT   | 2.05   | 2 1/16  |
| 79390    | 3/4       | 1/2 MPT   | 1.93   | 1 15/16 |
| 79395    | 3/4       | 3/4 MPT   | 2.05   | 2 1/16  |
| 79400    | 1         | 3/4 MPT   | 2.05   | 2 1/16  |
| 79405    | 1         | 1 MPT     | 2.22   | 2 1/4   |
| 79410    | 1 1/4     | 1 1/4 MPT | 2.54   | 2 9/16  |
| 79415    | 1 1/2     | 1 1/2 MPT | 2.89   | 2 7/8   |
| 79420    | 2         | 2 MPT     | 3.33   | 3 5/16  |

**Viega ProPress Adapter Zero Lead Bronze P x FPT – Model 2912ZL**



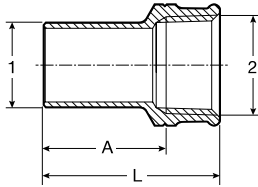
| Part No. | Size (in) |           | A (in) |      | L (in) |         |
|----------|-----------|-----------|--------|------|--------|---------|
|          | 1         | 2         | Dec    | Frac | Dec    | Frac    |
| 79295    | 1/2       | 3/8 FPT   | 0.19   | 3/16 | 1.42   | 1 7/16  |
| 79300    | 1/2       | 1/2 FPT   | 0.25   | 1/4  | 1.61   | 1 5/8   |
| 79305    | 1/2       | 3/4 FPT   | 0.27   | 1/4  | 1.65   | 1 5/8   |
| 79310    | 3/4       | 1/2 FPT   | 0.33   | 5/16 | 1.77   | 1 3/4   |
| 79315    | 3/4       | 3/4 FPT   | 0.35   | 3/8  | 1.81   | 1 13/16 |
| 79320    | 1         | 1/2 FPT   | 0.41   | 7/16 | 1.85   | 1 7/8   |
| 79325    | 1         | 3/4 FPT   | 0.39   | 3/8  | 1.85   | 1 7/8   |
| 79330    | 1         | 1 FPT     | 0.44   | 7/16 | 2.01   | 2       |
| 79335    | 1         | 1 1/4 FPT | 0.50   | 1/2  | 2.09   | 2 1/16  |
| 79340    | 1 1/4     | 1/2 FPT   | 0.37   | 3/8  | 1.93   | 1 15/16 |
| 79345    | 1 1/4     | 1 FPT     | 0.24   | 1/4  | 1.93   | 1 15/16 |
| 79350    | 1 1/4     | 1 1/4 FPT | 0.34   | 5/16 | 2.05   | 2 1/16  |
| 79355    | 1 1/4     | 1 1/2 FPT | 0.42   | 7/16 | 2.13   | 2 1/8   |
| 79360    | 1 1/2     | 1 1/4 FPT | 0.26   | 1/4  | 2.36   | 2 3/8   |
| 79365    | 1 1/2     | 1 1/2 FPT | 0.34   | 5/16 | 2.44   | 2 7/16  |
| 79370    | 2         | 2 FPT     | 0.41   | 7/16 | 2.68   | 2 11/16 |

**Viega ProPress Adapter P x FPT – Model 0912XL**



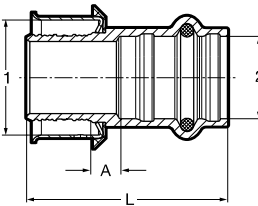
| Part No. | Size (in) |           | A (in) |         | L (in) |         |
|----------|-----------|-----------|--------|---------|--------|---------|
|          | 1         | 2         | Dec    | Frac    | Dec    | Frac    |
| 20819    | 2 1/2     | 2 1/2 FPT | 1.53   | 1 1/2   | 4.15   | 4 1/8   |
| 20829    | 3         | 3 FPT     | 1.84   | 1 13/16 | 4.82   | 4 13/16 |
| 20839    | 4         | 4 FPT     | 2.09   | 2 1/16  | 5.55   | 5 9/16  |

## Viega ProPress Adapter Zero Lead Bronze FTG x FPT – Model 2912.1ZL



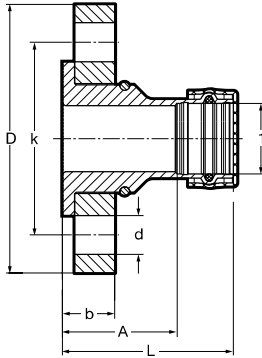
| Part No. | Size (in) |     | A (in) |      | L (in) |      |
|----------|-----------|-----|--------|------|--------|------|
|          | 1         | 2   | Dec    | Frac | Dec    | Frac |
| 79425    | ½ x ⅜     | FPT | 1.10   | 1⅛   | 1.54   | 1⅞   |
| 79430    | ½ x ½     | FPT | 1.22   | 1¼   | 1.75   | 1¾   |
| 79435    | ½ x ¾     | FPT | 1.30   | 1⅝   | 1.83   | 1⅓   |
| 79440    | ¾ x ½     | FPT | 1.26   | 1¼   | 1.79   | 1⅓   |
| 79445    | ¾ x ¾     | FPT | 1.28   | 1¼   | 1.83   | 1⅓   |
| 79455    | 1 x ½     | FPT | 1.35   | 1⅜   | 1.99   | 2    |
| 79450    | 1 x 1     | FPT | 1.33   | 1⅝   | 1.99   | 2    |
| 79460    | 1¼ x ½    | FPT | 1.65   | 1⅝   | 2.19   | 2⅜   |
| 79465    | 1¼ x 1¼   | FPT | 1.50   | 1½   | 2.19   | 2⅜   |
| 79470    | 1½ x 1½   | FPT | 1.88   | 1⅞   | 2.56   | 2⅞   |
| 79475    | 2 x 2     | FPT | 2.13   | 2⅞   | 2.95   | 2⅝   |

## Viega PEX Press Adapter Zero Lead Bronze P x P – Model 2813PZL



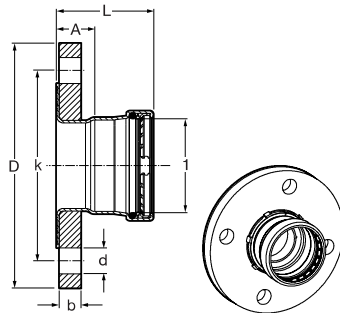
| Part No. | Size (in) |   | A (in) |      | L (in) |      |
|----------|-----------|---|--------|------|--------|------|
|          | 1         | 2 | Dec    | Frac | Dec    | Frac |
| 99620    | ½ x ½     |   | 0.29   | ⅝    | 1.61   | 1⅝   |
| 99626    | ½ x ¾     |   | 0.43   | ⅞    | 1.83   | 1⅓   |
| 99630    | ¾ x ½     |   | 0.23   | ¼    | 1.56   | 1⅞   |
| 99640    | ¾ x ¾     |   | 0.33   | ⅝    | 1.73   | 1¾   |
| 99645    | 1 x ¾     |   | 0.35   | ⅜    | 1.87   | 1⅞   |
| 99660    | 1 x 1     |   | 0.45   | ⅞    | 1.97   | 2    |
| 99665    | 1¼ x 1    |   | 0.49   | ½    | 2.26   | 2¼   |
| 99670    | 1¼ x 1¼   |   | 0.49   | ½    | 2.38   | 2⅜   |
| 66675    | 1½ x 1    |   | 0.59   | ⅞    | 2.36   | 2⅜   |
| 99680    | 1½ x 1½   |   | 0.59   | ⅞    | 2.87   | 2⅞   |
| 99685    | 2 x 1     |   | 0.73   | ¾    | 2.68   | 2⅞   |
| 99690    | 2 x 2     |   | 0.59   | ⅞    | 3.21   | 3⅞   |

## Viega ProPress Adapter Flange Zero Lead Bronze P x Flange – Model 2959.5ZL



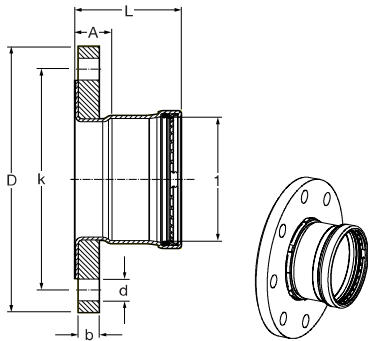
| Part No. | Size (in) | A (in) |        | L (in) |         | b (in) |       | D (in) |         | k (in) |       | d (in) |      |
|----------|-----------|--------|--------|--------|---------|--------|-------|--------|---------|--------|-------|--------|------|
|          |           | Dec    | Frac   | Dec    | Frac    | Dec    | Frac  | Dec    | Frac    | Dec    | Frac  | Dec    | Frac |
| 79680    | 1         | 1.85   | 1/8    | 2.76   | 2 3/4   | 0.84   | 13/16 | 4.33   | 4 5/16  | 3.11   | 3 1/8 | 0.63   | 5/8  |
| 79685    | 1 1/4     | 1.73   | 3/4    | 2.76   | 2 3/4   | 0.84   | 13/16 | 4.53   | 4 1/2   | 3.50   | 3 1/2 | 0.63   | 5/8  |
| 79690    | 1 1/2     | 1.65   | 1 5/8  | 3.07   | 3 1/16  | 0.84   | 13/16 | 4.92   | 4 15/16 | 3.86   | 3 7/8 | 0.63   | 5/8  |
| 79695    | 2         | 2.09   | 2 1/16 | 3.66   | 3 11/16 | 0.84   | 13/16 | 5.91   | 5 15/16 | 4.76   | 4 3/4 | 0.75   | 3/4  |

## Viega ProPress Adapter Flange P x Flange – Model 0959.5XL



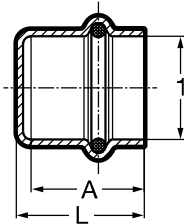
| Part No. | Size (in) | A (in) |      | L (in) |         | b (in) |        | k (in) |       | D (in) |        | d (in) |      |
|----------|-----------|--------|------|--------|---------|--------|--------|--------|-------|--------|--------|--------|------|
|          |           | Dec    | Frac | Dec    | Frac    | Dec    | Frac   | Dec    | Frac  | Dec    | Frac   | Dec    | Frac |
| 20853    | 2 1/2     | 1.09   | 1/16 | 2.79   | 2 13/16 | 0.70   | 1 1/16 | 5.51   | 5 1/2 | 7.09   | 7 1/16 | 0.75   | 3/4  |
| 20858    | 3         | 1.20   | 3/16 | 3.17   | 3 3/16  | 0.79   | 1 3/16 | 5.98   | 6     | 7.48   | 7 1/2  | 0.75   | 3/4  |

## Viega ProPress Adapter Flange P x Flange – Model 0959.5XL



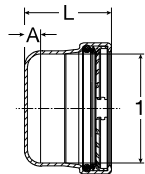
| Part No. | Size (in) | A (in) |                                | L (in) |                                | b (in) |                               | k (in) |                               | D (in) |                                | d (in) |                               |
|----------|-----------|--------|--------------------------------|--------|--------------------------------|--------|-------------------------------|--------|-------------------------------|--------|--------------------------------|--------|-------------------------------|
|          |           | Dec    | Frac                           | Dec    | Frac                           | Dec    | Frac                          | Dec    | Frac                          | Dec    | Frac                           | Dec    | Frac                          |
| 20863    | 4         | 1.29   | 1 <sup>5</sup> / <sub>16</sub> | 3.66   | 3 <sup>1</sup> / <sub>16</sub> | 0.86   | 7 <sup>7</sup> / <sub>8</sub> | 7.52   | 7 <sup>1</sup> / <sub>2</sub> | 9.06   | 9 <sup>1</sup> / <sub>16</sub> | 0.75   | 3 <sup>3</sup> / <sub>4</sub> |

## Viega ProPress Cap Copper P – Model 2956



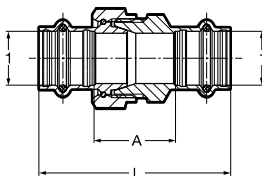
| Part No. | Size (in) | A (in) |                                 | L (in) |                                 |
|----------|-----------|--------|---------------------------------|--------|---------------------------------|
|          |           | Dec    | Frac                            | Dec    | Frac                            |
| 77712    | 1/2       | 0.79   | 1 <sup>3</sup> / <sub>16</sub>  | 0.92   | 1 <sup>5</sup> / <sub>16</sub>  |
| 77717    | 3/4       | 0.94   | 1 <sup>5</sup> / <sub>16</sub>  | 1.07   | 1 <sup>1</sup> / <sub>16</sub>  |
| 77722    | 1         | 0.99   | 1                               | 1.11   | 1 <sup>1</sup> / <sub>8</sub>   |
| 77727    | 1 1/4     | 1.20   | 1 <sup>3</sup> / <sub>16</sub>  | 1.32   | 1 <sup>5</sup> / <sub>16</sub>  |
| 77732    | 1 1/2     | 1.49   | 1 1/2                           | 1.62   | 1 5/8                           |
| 77737    | 2         | 1.69   | 1 <sup>11</sup> / <sub>16</sub> | 1.81   | 1 <sup>13</sup> / <sub>16</sub> |

## Viega ProPress Cap P – Model 0956XL



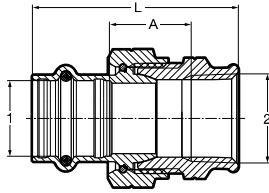
| Part No. | Size (in) | A (in) |                               | L (in) |                               |
|----------|-----------|--------|-------------------------------|--------|-------------------------------|
|          |           | Dec    | Frac                          | Dec    | Frac                          |
| 20833    | 2 1/2     | 0.39   | 3 <sup>3</sup> / <sub>8</sub> | 2.11   | 2 <sup>1</sup> / <sub>8</sub> |
| 20843    | 3         | 0.39   | 3 <sup>3</sup> / <sub>8</sub> | 2.36   | 2 <sup>3</sup> / <sub>8</sub> |
| 20848    | 4         | 0.39   | 3 <sup>3</sup> / <sub>8</sub> | 2.76   | 2 <sup>3</sup> / <sub>4</sub> |

## Viega ProPress Union Zero Lead Bronze P x P – Model 2960ZL



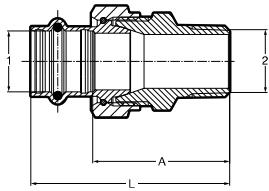
| Part No. | Size (in) | A (in) |                                 | L (in) |                                 |
|----------|-----------|--------|---------------------------------|--------|---------------------------------|
|          |           | Dec    | Frac                            | Dec    | Frac                            |
| 79125    | 1/2       | 1.19   | 1 <sup>3</sup> / <sub>16</sub>  | 2.84   | 2 <sup>13</sup> / <sub>16</sub> |
| 79130    | 3/4       | 1.34   | 1 <sup>5</sup> / <sub>16</sub>  | 3.15   | 3 <sup>1</sup> / <sub>8</sub>   |
| 79135    | 1         | 1.83   | 1 <sup>13</sup> / <sub>16</sub> | 3.65   | 3 <sup>5</sup> / <sub>8</sub>   |
| 79140    | 1 1/4     | 1.64   | 1 <sup>5</sup> / <sub>8</sub>   | 3.69   | 3 <sup>11</sup> / <sub>16</sub> |
| 79145    | 1 1/2     | 2.13   | 2 <sup>1</sup> / <sub>8</sub>   | 4.96   | 4 <sup>15</sup> / <sub>16</sub> |
| 79150    | 2         | 2.07   | 2 <sup>1</sup> / <sub>16</sub>  | 5.22   | 5 <sup>1</sup> / <sub>4</sub>   |

## Viega ProPress Union Zero Lead Bronze P x FPT – Model 2962ZL



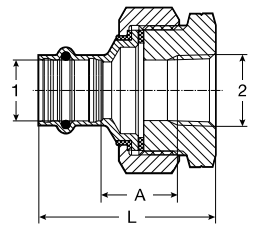
| Part No. | Size (in) |     | A (in) |       | L (in) |        |
|----------|-----------|-----|--------|-------|--------|--------|
|          | 1         | 2   | Dec    | Frac  | Dec    | Frac   |
| 79700    | ½ x ½     | FPT | 0.91   | 15/16 | 2.27   | 2¼     |
| 79705    | ¾ x ¾     | FPT | 0.96   | 15/16 | 2.42   | 27/16  |
| 79710    | 1 x 1     | FPT | 1.31   | 15/16 | 2.88   | 27/8   |
| 79715    | 1¼ x 1¼   | FPT | 1.27   | 1¼    | 2.97   | 3      |
| 79720    | 1½ x 1½   | FPT | 1.77   | 1¾    | 3.87   | 37/8   |
| 79725    | 2 x 2     | FPT | 1.65   | 15/8  | 3.92   | 315/16 |

## Viega ProPress Union Zero Lead Bronze P x MPT – Model 2965ZL



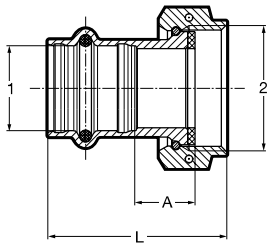
| Part No. | Size (in) |     | A (in) |       | L (in) |        |
|----------|-----------|-----|--------|-------|--------|--------|
|          | 1         | 2   | Dec    | Frac  | Dec    | Frac   |
| 79730    | ½ x ½     | MPT | 1.86   | 17/8  | 2.69   | 211/16 |
| 79735    | ¾ x ¾     | MPT | 2.00   | 2     | 2.90   | 27/8   |
| 79740    | 1 x 1     | MPT | 2.54   | 29/16 | 3.45   | 37/16  |
| 79745    | 1¼ x 1¼   | MPT | 2.49   | 2½    | 3.52   | 3½     |
| 79750    | 1½ x 1½   | MPT | 3.05   | 31/16 | 4.47   | 4½     |
| 79755    | 2 x 2     | MPT | 2.99   | 3     | 4.57   | 49/16  |

## Viega ProPress Dielectric Union Zero Lead Bronze P x FPT – Model 2967ZL



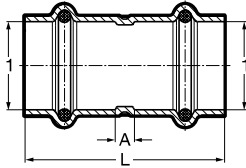
| Part No. | Size (in) |     | A (in) |      | L (in) |        |
|----------|-----------|-----|--------|------|--------|--------|
|          | 1         | 2   | Dec    | Frac | Dec    | Frac   |
| 79155    | ½ x ½     | FPT | 0.88   | 7/8  | 2.24   | 1¼     |
| 79160    | ¾ x ¾     | FPT | 1.11   | 11/8 | 2.57   | 29/16  |
| 79165    | 1 x 1     | FPT | 1.00   | 1    | 2.57   | 29/16  |
| 79170    | 1¼ x 1¼   | FPT | 0.97   | 1    | 2.68   | 211/16 |
| 79175    | 1½ x 1½   | FPT | 1.01   | 1    | 3.11   | 31/8   |
| 79180    | 2 x 2     | FPT | 1.26   | 1¼   | 3.53   | 3½     |

## Viega ProPress Tailpiece Zero Lead Bronze P x F BSP – Model 2957ZL



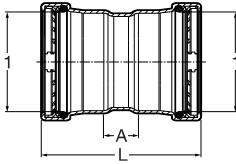
| Part No. | Size (in) |     | A (in) |      | L (in) |        |
|----------|-----------|-----|--------|------|--------|--------|
|          | 1         | 2   | Dec    | Frac | Dec    | Frac   |
| 79155    | ½ x ½     | FPT | 0.88   | 7/8  | 2.24   | 1¼     |
| 79160    | ¾ x ¾     | FPT | 1.11   | 11/8 | 2.57   | 29/16  |
| 79165    | 1 x 1     | FPT | 1.00   | 1    | 2.57   | 29/16  |
| 79170    | 1¼ x 1¼   | FPT | 0.97   | 1    | 2.68   | 211/16 |
| 79175    | 1½ x 1½   | FPT | 1.01   | 1    | 3.11   | 31/8   |
| 79180    | 2 x 2     | FPT | 1.26   | 1¼   | 3.53   | 3½     |

## Viega ProPress Coupling with Stop Copper P x P – Model 2915



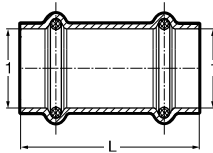
| Part No. | Size (in) |       | A (in) |      | L (in) |        |
|----------|-----------|-------|--------|------|--------|--------|
|          | 1         | 1     | Dec    | Frac | Dec    | Frac   |
| 78047    | 1/2       | 1/2   | 0.12   | 1/8  | 1.61   | 1 5/8  |
| 78052    | 3/4       | 3/4   | 0.20   | 3/16 | 2.01   | 2      |
| 78057    | 1         | 1     | 0.16   | 3/16 | 1.97   | 2      |
| 78062    | 1 1/4     | 1 1/4 | 0.14   | 1/8  | 2.20   | 2 3/16 |
| 78067    | 1 1/2     | 1 1/2 | 0.14   | 1/8  | 2.99   | 3      |
| 78072    | 2         | 2     | 0.14   | 1/8  | 3.31   | 2 5/16 |

## Viega ProPress Coupling with Stop P x P – Model 0915XL



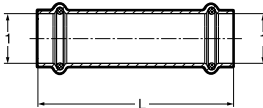
| Part No. | Size (in) |       | A (in) |        | L (in) |         |
|----------|-----------|-------|--------|--------|--------|---------|
|          | 1         | 1     | Dec    | Frac   | Dec    | Frac    |
| 20728    | 2 1/2     | 2 1/2 | 0.95   | 15/16  | 4.33   | 4 5/16  |
| 20733    | 3         | 3     | 0.98   | 1      | 4.92   | 4 15/16 |
| 20738    | 4         | 4     | 1.06   | 1 1/16 | 5.79   | 5 13/16 |

## Viega ProPress Coupling No Stop Copper P x P – Model 2915.3



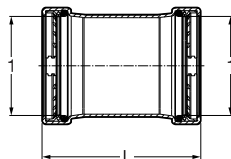
| Part No. | Size (in) |       | L (in) |        |
|----------|-----------|-------|--------|--------|
|          | 1         | 1     | Dec    | Frac   |
| 78172    | 1/2       | 1/2   | 1.61   | 1 5/8  |
| 78177    | 3/4       | 3/4   | 2.01   | 2      |
| 78182    | 1         | 1     | 1.97   | 2      |
| 78187    | 1 1/4     | 1 1/4 | 2.20   | 2 3/16 |
| 78192    | 1 1/2     | 1 1/2 | 2.99   | 3      |
| 78197    | 2         | 2     | 3.31   | 3 5/16 |

## Viega ProPress Extended Coupling Copper P x P – Model 2915.5



| Part No. | Size (in) |       | L (in) |         |
|----------|-----------|-------|--------|---------|
|          | 1         | 1     | Dec    | Frac    |
| 20743    | 2 1/2     | 2 1/2 | 4.33   | 4 5/16  |
| 20748    | 3         | 3     | 4.92   | 4 15/16 |
| 20753    | 4         | 4     | 5.79   | 5 13/16 |

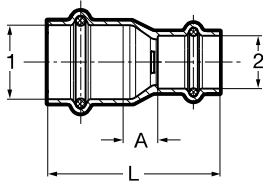
## Viega ProPress Coupling No Stop P x P – Model 0915.5XL



| Part No. | Size (in) |       | L (in) |         |
|----------|-----------|-------|--------|---------|
|          | 1         | 1     | Dec    | Frac    |
| 20743    | 2 1/2     | 2 1/2 | 4.33   | 4 5/16  |
| 20748    | 3         | 3     | 4.92   | 4 15/16 |
| 20753    | 4         | 4     | 5.79   | 5 13/16 |

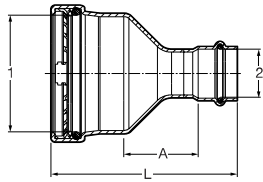


## Viega ProPress Reducer Copper P x P – Model 2915.2



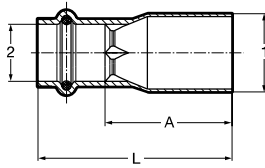
| Part No. | Size (in) |       | A (in) |        | L (in) |         |
|----------|-----------|-------|--------|--------|--------|---------|
|          | 1         | 2     | Dec    | Frac   | Dec    | Frac    |
| 78147    | 3/4       | 1/2   | 0.42   | 7/16   | 2.07   | 21/16   |
| 15603    | 1         | 1/2   | 0.71   | 11/16  | 2.36   | 23/8    |
| 78152    | 1         | 3/4   | 0.48   | 1/2    | 2.29   | 25/16   |
| 15593    | 1 1/4     | 3/4   | 0.70   | 11/16  | 2.64   | 25/8    |
| 78157    | 1 1/4     | 1     | 0.55   | 9/16   | 2.48   | 2 1/2   |
| 18473    | 1 1/2     | 3/4   | 0.98   | 1      | 3.33   | 3 5/16  |
| 15588    | 1 1/2     | 1     | 0.74   | 3/4    | 3.07   | 3 1/16  |
| 78162    | 1 1/2     | 1 1/4 | 0.50   | 1/2    | 2.96   | 2 15/16 |
| 18468    | 2         | 3/4   | 1.54   | 1 9/16 | 4.02   | 4       |
| 15608    | 2         | 1     | 1.29   | 1 5/16 | 3.78   | 3 3/4   |
| 22328    | 2         | 1 1/4 | 0.81   | 1 3/16 | 3.43   | 3 7/16  |
| 78167    | 2         | 1 1/2 | 0.74   | 3/4    | 3.75   | 3 3/4   |

## Viega ProPress Reducer P x P – Model 0915.2XL



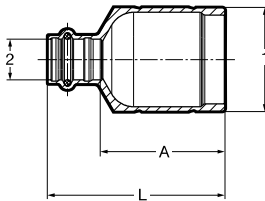
| Part No. | Size (in) |       | A (in) |         | L (in) |         |
|----------|-----------|-------|--------|---------|--------|---------|
|          | 1         | 2     | Dec    | Frac    | Dec    | Frac    |
| 20685    | 2 1/2     | 1     | 1.76   | 1 3/4   | 4.36   | 4 3/8   |
| 20690    | 2 1/2     | 1 1/4 | 1.61   | 1 5/8   | 4.34   | 4 5/16  |
| 20695    | 2 1/2     | 1 1/2 | 1.52   | 1 1/2   | 4.64   | 4 5/8   |
| 20700    | 2 1/2     | 2     | 1.41   | 1 7/16  | 4.69   | 4 11/16 |
| 20705    | 3         | 1 1/2 | 1.78   | 1 3/4   | 5.17   | 5 3/16  |
| 20710    | 3         | 2     | 1.53   | 1 1/2   | 5.08   | 5 1/16  |
| 20715    | 3         | 2 1/2 | 1.41   | 1 7/16  | 5.07   | 5 1/16  |
| 20720    | 4         | 2     | 2.06   | 2 1/16  | 6.00   | 6       |
| 20725    | 4         | 2 1/2 | 1.93   | 1 15/16 | 5.99   | 6       |
| 20730    | 4         | 3     | 1.70   | 1 11/16 | 6.03   | 6 1/16  |

## Viega ProPress Reducer Copper FTG x P – Model 2915.1



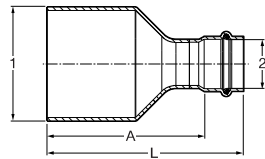
| Part No. | Size (in) |       | A (in) |        | L (in) |        |
|----------|-----------|-------|--------|--------|--------|--------|
|          | 1         | 2     | Dec    | Frac   | Dec    | Frac   |
| 78077    | 3/4       | 1/2   | 1.42   | 1/16   | 2.17   | 23/16  |
| 78082    | 1         | 1/2   | 1.69   | 11/16  | 2.44   | 27/16  |
| 78087    | 1         | 3/4   | 1.42   | 1/16   | 2.32   | 25/16  |
| 22333    | 1 1/4     | 1/2   | 1.91   | 15/16  | 2.74   | 23/4   |
| 78092    | 1 1/4     | 3/4   | 1.85   | 1/8    | 2.76   | 23/4   |
| 78097    | 1 1/4     | 1     | 1.57   | 9/16   | 2.48   | 21/2   |
| 14543    | 1 1/2     | 3/4   | 2.56   | 9/16   | 3.46   | 37/16  |
| 78102    | 1 1/2     | 1     | 2.28   | 2/4    | 3.19   | 33/16  |
| 78107    | 1 1/2     | 1 1/4 | 2.04   | 2/16   | 3.07   | 31/16  |
| 78112    | 2         | 1     | 3.03   | 3/16   | 3.94   | 315/16 |
| 78117    | 2         | 1 1/4 | 2.79   | 213/16 | 3.82   | 313/16 |
| 78122    | 2         | 1 1/2 | 2.63   | 25/8   | 4.06   | 41/16  |

## Viega ProPress Reducer Zero Lead Bronze FTG x P – Model 2915.1ZL



| Part No. | Size (in) |     | A (in) |       | L (in) |       |
|----------|-----------|-----|--------|-------|--------|-------|
|          | 1         | 2   | Dec    | Frac  | Dec    | Frac  |
| 79850    | 1 1/2     | 1/2 | 1.95   | 15/16 | 2.78   | 23/4  |
| 79855    | 2         | 1/2 | 2.38   | 23/8  | 3.21   | 33/16 |
| 79860    | 2         | 3/4 | 2.42   | 2/16  | 3.33   | 35/16 |

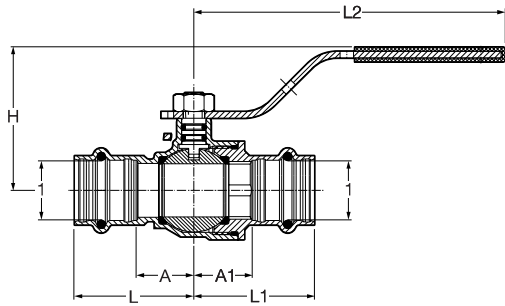
## Viega ProPress Reducer FTG x P – Model 0915.1XL



| Part No. | Size (in) |       | A (in) |        | L (in) |        |
|----------|-----------|-------|--------|--------|--------|--------|
|          | 1         | 2     | Dec    | Frac   | Dec    | Frac   |
| 20814    | 2 1/2     | 1     | 3.61   | 3/8    | 4.52   | 4 1/2  |
| 20815    | 2 1/2     | 1 1/4 | 3.47   | 3/2    | 4.51   | 4 1/2  |
| 20813    | 2 1/2     | 1 1/2 | 3.41   | 37/16  | 4.84   | 413/16 |
| 20758    | 2 1/2     | 2     | 2.35   | 23/8   | 3.94   | 315/16 |
| 20817    | 3         | 1 1/4 | 3.96   | 315/16 | 5.00   | 5      |
| 20818    | 3         | 1 1/2 | 3.91   | 315/16 | 5.34   | 55/16  |
| 20763    | 3         | 2     | 2.98   | 3      | 4.57   | 49/16  |
| 20768    | 3         | 2 1/2 | 2.76   | 23/4   | 4.45   | 47/16  |
| 20773    | 4         | 2     | 4.58   | 49/16  | 6.17   | 63/16  |
| 20778    | 4         | 2 1/2 | 4.45   | 47/16  | 6.15   | 61/8   |
| 20783    | 4         | 3     | 4.17   | 43/16  | 6.14   | 61/8   |

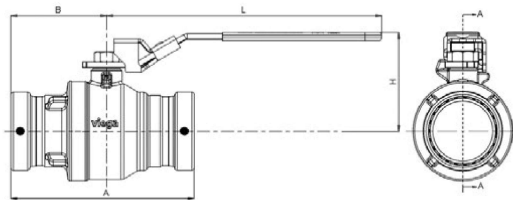


**Viega ProPress Ball Valve Zero Lead Bronze P x P – Model 2971.1ZL**



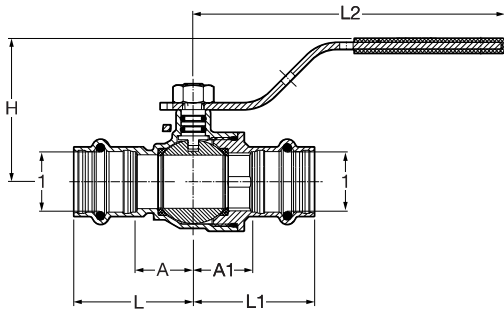
| Part No. | Size (in)     | A (in) |        | A1 (in) |       | L (in) |        | L1 (in) |         | L2 (in) |       | H (in) |         |
|----------|---------------|--------|--------|---------|-------|--------|--------|---------|---------|---------|-------|--------|---------|
|          |               | 1      | 1      | Dec     | Frac  | Dec    | Frac   | Dec     | Frac    | Dec     | Frac  | Dec    | Frac    |
| 79920    | 1/2 x 1/2     | 0.75   | 3/4    | 0.75    | 3/4   | 1.57   | 19/16  | 1.57    | 19/16   | 4.57    | 49/16 | 1.97   | 2       |
| 79925    | 3/4 x 3/4     | 0.85   | 7/8    | 0.87    | 7/8   | 1.75   | 13/4   | 1.77    | 13/4    | 4.57    | 49/16 | 2.09   | 21/16   |
| 79930    | 1 x 1         | 1.02   | 1      | 1.06    | 11/16 | 1.93   | 115/16 | 1.96    | 115/16  | 5.75    | 53/4  | 2.46   | 27/16   |
| 79935    | 1 1/4 x 1 1/4 | 1.14   | 1 1/8  | 1.12    | 1 1/8 | 2.17   | 23/16  | 2.15    | 2 1/8   | 5.75    | 53/4  | 2.67   | 2 11/16 |
| 79940    | 1 1/2 x 1 1/2 | 1.46   | 1 7/16 | 1.25    | 1 1/4 | 2.87   | 27/8   | 2.67    | 2 11/16 | 6.12    | 6 1/8 | 3.02   | 3       |
| 79950    | 2 x 2         | 1.73   | 1 3/4  | 1.47    | 1 1/2 | 3.31   | 3 5/16 | 3.05    | 3 1/16  | 6.12    | 6 1/8 | 3.32   | 3 5/16  |

**Viega ProPress Ball Valve Zero Lead Brass P x P – Model 2971.1XL**



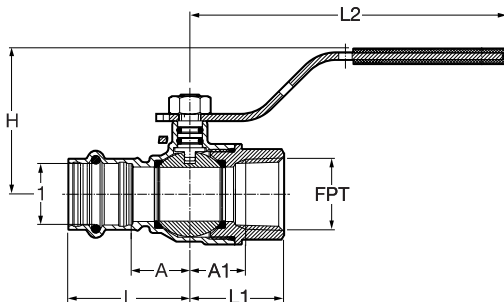
| Part No. | Size (in) | A (in) |       | B (in) |         | H (in) |       | L (in) |        | Weight (lbs) |
|----------|-----------|--------|-------|--------|---------|--------|-------|--------|--------|--------------|
|          |           | Dec    | Frac  | Dec    | Frac    | Dec    | Frac  | Dec    | Frac   |              |
| 78300    | 2 1/2     | 7.47   | 7 1/2 | 3.91   | 3 15/16 | 4.02   | 4     | 11.22  | 11 1/4 | 7.0          |
| 78305    | 3         | 8.15   | 8 1/8 | 4.17   | 4 3/16  | 4.37   | 4 3/8 | 11.22  | 11 1/4 | 9.7          |
| 78310    | 4         | 9.72   | 9 3/4 | 4.99   | 5       | 5.12   | 5 1/8 | 11.22  | 11 1/4 | 17.5         |

## Viega ProPress Ball Valve Zero Lead Bronze P x P – Model 2971.3ZL



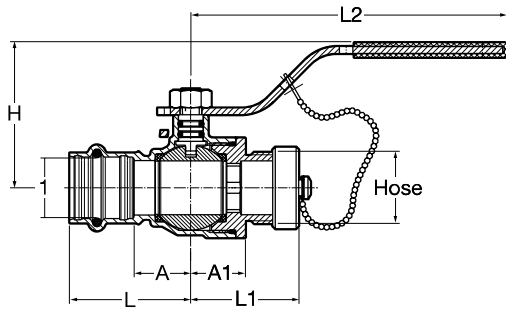
| Part No. | Size (in) |         | A (in) |        | A1 (in) |       | L (in) |        | L1 (in) |         | L2 (in) |       | H (in) |         |
|----------|-----------|---------|--------|--------|---------|-------|--------|--------|---------|---------|---------|-------|--------|---------|
|          | 1         | 1       | Dec    | Frac   | Dec     | Frac  | Dec    | Frac   | Dec     | Frac    | Dec     | Frac  | Dec    | Frac    |
| 79923    | 1/2       | x 1/2   | 0.75   | 3/4    | 0.75    | 3/4   | 1.57   | 19/16  | 1.57    | 19/16   | 4.57    | 49/16 | 1.97   | 2       |
| 79928    | 3/4       | x 3/4   | 0.85   | 7/8    | 0.87    | 7/8   | 1.75   | 13/4   | 1.77    | 13/4    | 4.57    | 49/16 | 2.09   | 21/16   |
| 79933    | 1         | x 1     | 1.02   | 1      | 1.06    | 11/16 | 1.93   | 115/16 | 1.96    | 115/16  | 5.75    | 53/4  | 2.46   | 27/16   |
| 79938    | 1 1/4     | x 1 1/4 | 1.14   | 1 1/8  | 1.12    | 1 1/8 | 2.17   | 23/16  | 2.15    | 2 1/8   | 5.75    | 53/4  | 2.67   | 2 11/16 |
| 79943    | 1 1/2     | x 1 1/2 | 1.46   | 1 7/16 | 1.25    | 1 1/4 | 2.87   | 2 7/8  | 2.67    | 2 11/16 | 6.12    | 6 1/8 | 3.02   | 3       |
| 79948    | 2         | x 2     | 1.73   | 1 3/4  | 1.47    | 1 1/2 | 3.31   | 3 5/16 | 3.05    | 3 1/16  | 6.12    | 6 1/8 | 3.32   | 3 5/16  |

## Viega ProPress Ball Valve Zero Lead Bronze P x FPT – Model 2971.4ZL



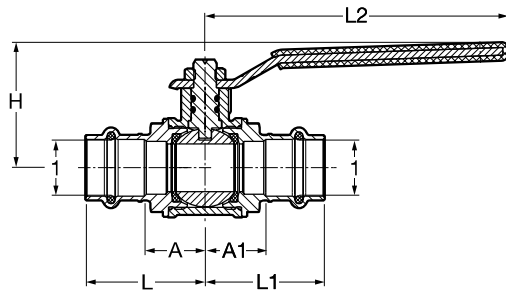
| Part No. | Size (in) |       | A (in) |      | A1 (in) |       | L (in) |         | L1 (in) |       | L2 (in) |       | H (in) |        |
|----------|-----------|-------|--------|------|---------|-------|--------|---------|---------|-------|---------|-------|--------|--------|
|          | 1         | FPT   | Dec    | Frac | Dec     | Frac  | Dec    | Frac    | Dec     | Frac  | Dec     | Frac  | Dec    | Frac   |
| 79970    | 1/2       | x 1/2 | 0.73   | 3/4  | 0.66    | 11/16 | 1.57   | 19/16   | 1.20    | 13/16 | 4.57    | 49/16 | 1.97   | 2      |
| 79975    | 3/4       | x 3/4 | 0.85   | 7/8  | 0.79    | 13/16 | 1.75   | 13/4    | 1.35    | 1 3/8 | 4.57    | 49/16 | 2.09   | 2 1/16 |
| 79980    | 1         | x 1   | 1.02   | 1    | 0.98    | 1     | 1.93   | 1 15/16 | 1.63    | 1 5/8 | 5.75    | 5 3/4 | 2.46   | 2 7/16 |

## Viega ProPress Ball Valve Zero Lead Bronze P x Hose – Model 2971.6ZL



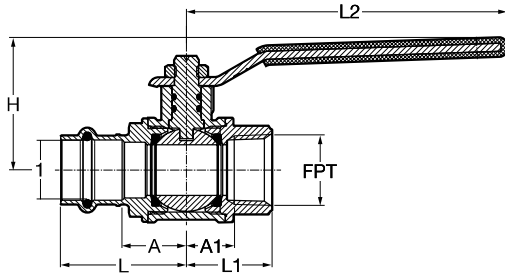
| Part No. | Size (in) |      | A (in) |      | A1 (in) |       | L (in) |       | L1 (in) |       | L2 (in) |       | H (in) |       |
|----------|-----------|------|--------|------|---------|-------|--------|-------|---------|-------|---------|-------|--------|-------|
|          | 1         | Hose | Dec    | Frac | Dec     | Frac  | Dec    | Frac  | Dec     | Frac  | Dec     | Frac  | Dec    | Frac  |
| 79875    | 1/2 x 3/4 | GH   | 0.75   | 3/4  | 0.79    | 13/16 | 1.57   | 19/16 | 1.56    | 19/16 | 4.57    | 49/16 | 1.99   | 2     |
| 79876    | 3/4 x 3/4 | GH   | 0.85   | 7/8  | 0.79    | 13/16 | 1.75   | 13/4  | 1.56    | 19/16 | 4.57    | 49/16 | 2.10   | 2 1/8 |

## Viega ProPress Ball Valve Bronze/Brass P x P – Model 2973



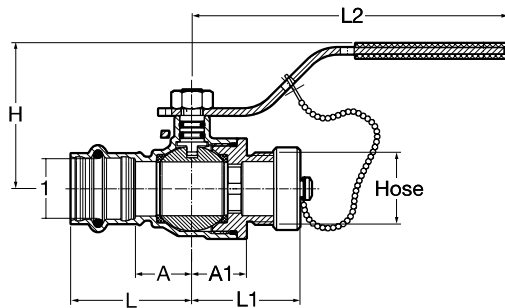
| Part No. | Size (in)     |   | A (in) |        | A1 (in) |        | L (in) |         | L1 (in) |         | L2 (in) |         | H (in) |         |
|----------|---------------|---|--------|--------|---------|--------|--------|---------|---------|---------|---------|---------|--------|---------|
|          | 1             | 1 | Dec    | Frac   | Dec     | Frac   | Dec    | Frac    | Dec     | Frac    | Dec     | Frac    | Dec    | Frac    |
| 24000    | 1/2 x 1/2     |   | 0.83   | 13/16  | 0.83    | 13/16  | 1.58   | 19/16   | 1.58    | 19/16   | 3.94    | 3 15/16 | 1.69   | 1 11/16 |
| 24005    | 3/4 x 3/4     |   | 0.95   | 15/16  | 0.95    | 15/16  | 1.86   | 1 7/8   | 1.86    | 1 7/8   | 4.72    | 4 3/4   | 1.97   | 2       |
| 24010    | 1 x 1         |   | 1.18   | 1 3/16 | 1.18    | 1 3/16 | 2.09   | 2 1/16  | 2.09    | 2 1/16  | 4.72    | 4 3/4   | 2.13   | 2 1/8   |
| 24015    | 1 1/4 x 1 1/4 |   | 1.29   | 1 5/16 | 1.29    | 1 5/16 | 2.31   | 2 5/16  | 2.31    | 2 5/16  | 6.22    | 6 1/4   | 2.87   | 2 7/8   |
| 24020    | 1 1/2 x 1 1/2 |   | 1.39   | 1 3/8  | 1.39    | 1 3/8  | 2.81   | 1 13/16 | 2.81    | 2 13/16 | 6.22    | 6 1/4   | 3.11   | 3 1/8   |
| 24025    | 2 x 2         |   | 1.85   | 1 7/8  | 1.85    | 1 7/8  | 3.43   | 3 7/16  | 3.43    | 3 7/16  | 6.22    | 6 1/4   | 3.46   | 3 7/16  |

## Viega ProPress Ball Valve Bronze/Brass P x FPT – Model 2973.1



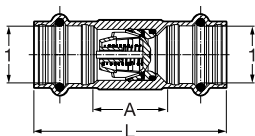
| Part No. | Size (in)<br>1 FPT | A (in) |       | A1 (in) |       | L (in) |       | L1 (in) |       | L2 (in) |        | H (in) |        |
|----------|--------------------|--------|-------|---------|-------|--------|-------|---------|-------|---------|--------|--------|--------|
|          |                    | Dec    | Frac  | Dec     | Frac  | Dec    | Frac  | Dec     | Frac  | Dec     | Frac   | Dec    | Frac   |
| 24030    | 1/2 x 1/2          | 0.83   | 13/16 | 0.63    | 5/8   | 1.58   | 19/16 | 1.16    | 13/16 | 3.94    | 315/16 | 1.69   | 111/16 |
| 24035    | 3/4 x 3/4          | 0.95   | 15/16 | 0.70    | 11/16 | 1.86   | 17/8  | 1.26    | 11/4  | 4.72    | 43/4   | 1.97   | 2      |
| 24040    | 1 x 1              | 1.18   | 13/16 | 0.93    | 15/16 | 2.09   | 21/16 | 1.59    | 19/16 | 4.72    | 43/4   | 2.13   | 21/8   |

## Viega ProPress Ball Valve Bronze/Brass P x Hose – Model 2973.3



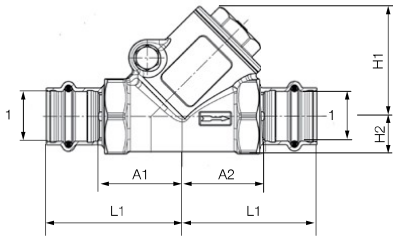
| Part No. | Size (in)<br>1 Hose | A (in) |       | A1 (in) |       | L (in) |       | L1 (in) |       | L2 (in) |      | H (in) |        |
|----------|---------------------|--------|-------|---------|-------|--------|-------|---------|-------|---------|------|--------|--------|
|          |                     | Dec    | Frac  | Dec     | Frac  | Dec    | Frac  | Dec     | Frac  | Dec     | Frac | Dec    | Frac   |
| 24090    | 1/2 x 3/4           | 0.83   | 13/16 | 0.85    | 7/8   | 1.58   | 19/16 | 1.30    | 15/16 | 3.89    | 37/8 | 1.67   | 111/16 |
| 24095    | 3/4 x 3/4           | 0.95   | 15/16 | 0.94    | 15/16 | 1.86   | 17/8  | 1.39    | 13/8  | 4.72    | 43/4 | 1.97   | 2      |

## Viega ProPress Check Valve Zero Lead Bronze P x P – Model 2974ZL



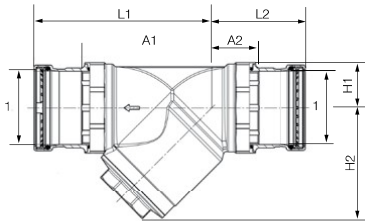
| Part No. | Size (in) |       | A (in) |        | L (in) |        |
|----------|-----------|-------|--------|--------|--------|--------|
|          | 1         | 1     | Dec    | Frac   | Dec    | Frac   |
| 79035    | 1/2       | 1/2   | 0.87   | 7/8    | 2.52   | 21/2   |
| 79040    | 3/4       | 3/4   | 1.14   | 11/8   | 2.95   | 215/16 |
| 79045    | 1         | 1     | 1.34   | 15/16  | 3.15   | 31/8   |
| 79050    | 1 1/4     | 1 1/4 | 1.69   | 111/16 | 3.74   | 33/4   |
| 79055    | 1 1/2     | 1 1/2 | 2.09   | 21/16  | 4.92   | 415/16 |
| 79060    | 2         | 2     | 2.56   | 29/16  | 5.71   | 511/16 |

## Viega ProPress Swing Check Valve Zero Lead – Model 2974.2ZL



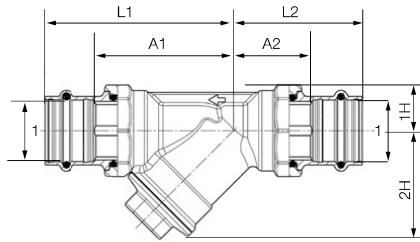
| Part No. | Size (in) 1 | H1 (in) |         | H2 (in) |        | L1 (in) |         | A1 (in) |        | A2 (in) |         | Cv (US gal/min) |
|----------|-------------|---------|---------|---------|--------|---------|---------|---------|--------|---------|---------|-----------------|
|          |             | Dec     | Frac    | Dec     | Frac   | Dec     | Frac    | Dec     | Frac   | Dec     | Frac    |                 |
| 87170    | 1/2         | 1.65    | 1 5/8   | 0.55    | 9/16   | 2.05    | 2 1/16  | 0.47    | 2 1/2  | 1.22    | 1 1/4   | 5.6             |
| 87175    | 3/4         | 1.97    | 2       | 0.67    | 1 1/16 | 2.40    | 2 3/8   | 0.55    | 2 9/16 | 1.50    | 1 1/2   | 9.6             |
| 87180    | 1           | 2.24    | 2 1/4   | 0.83    | 13/16  | 2.72    | 2 11/16 | 0.75    | 3/4    | 1.81    | 1 13/16 | 17              |
| 87185    | 1 1/4       | 2.72    | 2 11/16 | 0.98    | 1      | 3.03    | 3       | 0.91    | 15/16  | 2.01    | 2       | 28.2            |
| 87190    | 1 1/2       | 3.15    | 3 1/8   | 1.14    | 1 1/8  | 3.62    | 3 5/8   | 1.02    | 1      | 2.20    | 2 3/16  | 44              |
| 87195    | 2           | 3.86    | 3 7/8   | 1.38    | 1 3/8  | 4.21    | 4 3/16  | 1.30    | 1 5/16 | 2.64    | 2 5/8   | 82.3            |

## Viega ProPress Strainer Valve – Models 2981.1XL



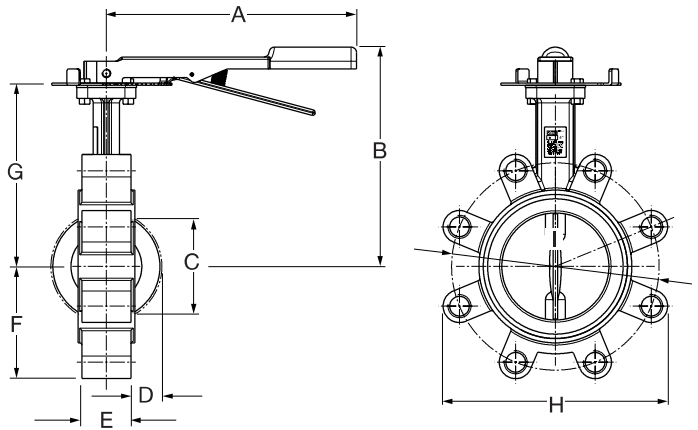
| Part No. | Size (in) 1 | H1 (in) |         | H2 (in) |         | L1 (in) |         | L2 (in) |         | A1 (in) |       | A2 (in) |         | Cv (US gal/min) |
|----------|-------------|---------|---------|---------|---------|---------|---------|---------|---------|---------|-------|---------|---------|-----------------|
|          |             | Dec     | Frac    | Dec     | Frac    | Dec     | Frac    | Dec     | Frac    | Dec     | Frac  | Dec     | Frac    |                 |
| 87260    | 2 1/2       | 4.09    | 4 1/16  | 1.69    | 1 11/16 | 6.89    | 6 7/8   | 3.82    | 3 13/16 | 5.00    | 5     | 1.93    | 1 15/16 | 88.9            |
| 87265    | 3           | 4.80    | 4 13/16 | 1.97    | 2       | 7.68    | 7 11/16 | 4.09    | 4 1/16  | 5.63    | 5 5/8 | 2.05    | 2 1/16  | 126             |
| 87270    | 4           | 6.06    | 6 1/16  | 2.48    | 2 1/2   | 9.13    | 9 1/8   | 4.53    | 4 1/2   | 6.89    | 6 7/8 | 2.29    | 2 5/16  | 212.7           |

## Viega ProPress Strainer Valve – Models 2981.1ZL



| Part No. | Size (in) | H1 (in) |       | H2 (in) |         | L1 (in) |         | L2 (in) |       | A1 (in) |         | A2 (in) |        | Cv (US gal/min) |
|----------|-----------|---------|-------|---------|---------|---------|---------|---------|-------|---------|---------|---------|--------|-----------------|
|          |           | Dec     | Frac  | Dec     | Frac    | Dec     | Frac    | Dec     | Frac  | Dec     | Frac    | Dec     | Frac   |                 |
| 87140    | 1/2       | 0.59    | 9/16  | 1.58    | 19/16   | 2.76    | 23/4    | 1.73    | 13/4  | 1.93    | 115/16  | 0.91    | 115/16 | 3.1             |
| 87145    | 3/4       | 0.71    | 11/16 | 1.73    | 13/4    | 3.07    | 31/16   | 2.24    | 21/4  | 2.17    | 23/16   | 1.34    | 15/16  | 5.1             |
| 87150    | 1         | 0.87    | 7/8   | 2.01    | 2       | 3.50    | 31/2    | 2.40    | 23/8  | 2.60    | 25/8    | 1.50    | 11/2   | 7.9             |
| 87155    | 1 1/4     | 1.02    | 1     | 2.48    | 2 1/2   | 4.06    | 4 1/16  | 2.36    | 23/8  | 3.03    | 3       | 1.34    | 15/16  | 20.5            |
| 87160    | 1 1/2     | 1.18    | 13/16 | 2.84    | 2 13/16 | 4.84    | 4 13/16 | 2.76    | 23/4  | 3.43    | 37/16   | 1.34    | 15/16  | 29.2            |
| 87165    | 2         | 1.42    | 17/16 | 3.11    | 3 1/8   | 5.51    | 5 1/2   | 3.15    | 3 3/8 | 3.94    | 3 15/16 | 1.58    | 19/16  | 40              |

## Butterfly Valve – Model 2873.81



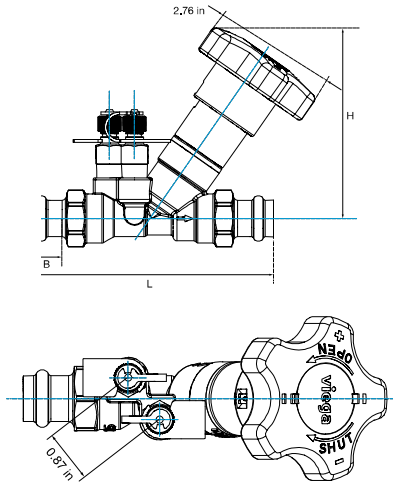
| Part No. | Size (in) | A (in) |      | B (in) |       | C (in) |        | D (in) |       | E (in) |        |
|----------|-----------|--------|------|--------|-------|--------|--------|--------|-------|--------|--------|
|          |           | Dec    | Frac | Dec    | Frac  | Dec    | Frac   | Dec    | Frac  | Dec    | Frac   |
| 22076    | 4         | 9.06   | 9/16 | 8.47   | 8 1/2 | 3.54   | 3 9/16 | 0.91   | 15/16 | 2.05   | 2 1/16 |

Continued below

| Part No. | Size (in) | F (in) |       | G (in) |        | H (in) |       | I (in) |       |
|----------|-----------|--------|-------|--------|--------|--------|-------|--------|-------|
|          |           | Dec    | Frac  | Dec    | Frac   | Dec    | Frac  | Dec    | Frac  |
| 22076    | 4         | 3.62   | 3 5/8 | 6.42   | 6 7/16 | 8.27   | 8 1/4 | 7.48   | 7 1/2 |



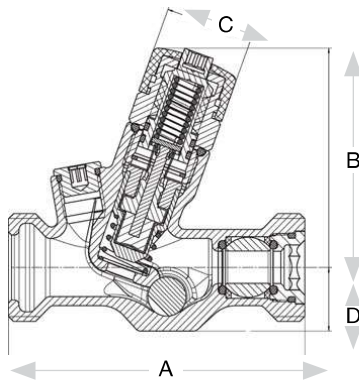
**Viega ProPress Manual Balancing Valve – Model 2980ZL**



| Part No. | Size (in) | ΦP <sup>1</sup> (in) | H (in) |         | L (in) |         | B (in) |        | Weight (lbs) | Flow Range (GPM) |
|----------|-----------|----------------------|--------|---------|--------|---------|--------|--------|--------------|------------------|
|          |           |                      | Dec    | Frac    | Dec    | Frac    | Dec    | Frac   |              |                  |
| 82100    | U-½       | 0.627-0.631          | 4.06   | 4 1/16  | 5.16   | 5 3/16  | 0.83   | 13/16  | 1.23/1.16    | 0.27-0.71        |
| 82105    | L-½       | 0.627-0.631          | 4.06   | 4 1/16  | 5.16   | 5 3/16  | 0.83   | 13/16  | 1.23/1.16    | 0.49-1.17        |
| 82110    | ½         | 0.627-0.631          | 4.06   | 4 1/16  | 5.16   | 5 3/16  | 0.83   | 13/16  | 1.23/1.16    | 0.98-2.35        |
| 82115    | ¾         | 0.877-0.881          | 4.06   | 4 1/16  | 5.85   | 5 7/8   | 0.91   | 15/16  | 1.43/1.34    | 2.19-5.15        |
| 82120    | 1         | 1.128-1.131          | 4.06   | 4 1/16  | 6.18   | 6 3/16  | 0.91   | 15/16  | 1.73/1.55    | 4.09-9.56        |
| 82125    | 1 ¼       | 1.378-1.381          | 4.85   | 4 7/8   | 6.99   | 7       | 1.02   | 1      | 2.78/2.53    | 8.56-19.81       |
| 82130    | 1 ½       | 1.628-1.632          | 4.94   | 4 15/16 | 7.92   | 7 15/16 | 1.42   | 1 7/16 | 3.50/3.16    | 12.84-29.80      |
| 82135    | 2         | 2.128-2.132          | 5.34   | 5 5/16  | 6.14   | 6 1/8   | 1.58   | 1 9/16 | 4.80/4.46    | 24.09-55.63      |

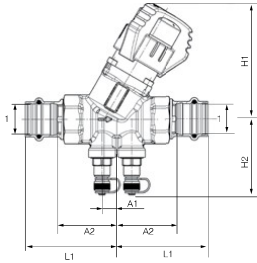
<sup>1</sup> Tolerance field

**Viega ProPress Automatic Recirculation Regulating Valve Zero Lead – Model 2981.3ZL**



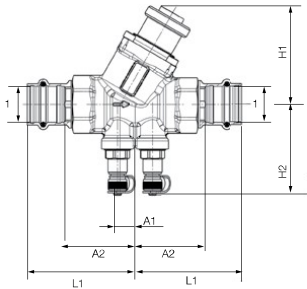
| Part No. | Size (in) | A (in) |         | B (in) |        | C (in) |        | D (in) |       |
|----------|-----------|--------|---------|--------|--------|--------|--------|--------|-------|
|          |           | Dec    | Frac    | Dec    | Frac   | Dec    | Frac   | Dec    | Frac  |
| 79901    | 1         | 3.66   | 3 11/16 | 3.43   | 3 7/16 | 1.09   | 1 1/16 | 0.79   | 13/16 |

## Viega ProPress Dynamic Auto Balancing Valve – Model 2981.7



| Part No. | Size (in) | H1 (in) |        | H2 (in) |        | L1 (in) |         | A1 (in) |       | A2 (in) |         | Flow Range (GPM) | Cv (US gal/min) |
|----------|-----------|---------|--------|---------|--------|---------|---------|---------|-------|---------|---------|------------------|-----------------|
|          |           | Dec     | Frac   | Dec     | Frac   | Dec     | Frac    | Dec     | Frac  | Dec     | Frac    |                  |                 |
|          | <b>1</b>  |         |        |         |        |         |         |         |       |         |         |                  |                 |
| 87305    | 1/2       | 3.47    | 3 1/2  | 2.32    | 2 5/16 | 2.40    | 2 3/8   | 0.39    | 3/8   | 1.58    | 1 9/16  | 0.26 - 4.75      | 3.02            |
| 87310    | 3/4       | 3.47    | 3 1/2  | 2.32    | 2 5/16 | 2.68    | 2 11/16 | 0.39    | 3/8   | 1.77    | 1 3/4   | 0.45 - 8.50      | 3.02            |
| 87315    | 1         | 3.58    | 3 9/16 | 2.44    | 2 7/16 | 2.84    | 2 13/16 | 0.39    | 3/8   | 1.93    | 1 15/16 | 0.60 - 10.57     | 4.87            |
| 87320    | 1 1/4     | 4.37    | 4 3/8  | 2.76    | 2 3/4  | 3.31    | 3 5/16  | 0.55    | 9/16  | 2.28    | 2 1/4   | 0.88 - 22.01     | 12.65           |
| 87325    | 1 1/2     | 5.20    | 5 3/16 | 2.87    | 2 7/8  | 4.25    | 4 1/4   | 0.83    | 13/16 | 2.84    | 2 13/16 | 3.17 - 32.58     | 20.88           |
| 87330    | 2         | 5.20    | 5 3/16 | 3.11    | 3 1/8  | 4.53    | 4 1/2   | 0.83    | 13/16 | 2.95    | 2 15/16 | 3.96 - 45.57     | 23.55           |

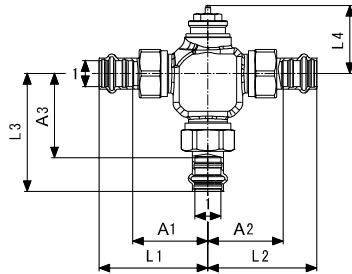
## Viega ProPress Pressure Independent Balancing and Control Valve – Models 2981.71 / 2987.72



| Part No.       | Size (in)      | H1 (in)  |      | H2 (in) |      | L1 (in) |      | A1 (in) |      | A2 (in) |      | Flow Range (GPM) | Cv (US gal/min) |       |
|----------------|----------------|----------|------|---------|------|---------|------|---------|------|---------|------|------------------|-----------------|-------|
|                |                | Dec      | Frac | Dec     | Frac | Dec     | Frac | Dec     | Frac | Dec     | Frac |                  |                 |       |
| <b>2981.71</b> | <b>2987.72</b> | <b>1</b> |      |         |      |         |      |         |      |         |      |                  |                 |       |
| 87365          | 89925          | 1/2      | 2.44 | 2 1/16  | 2.24 | 2 1/4   | 2.40 | 2 3/8   | 0.39 | 3/8     | 1.58 | 1 9/16           | 0.26 - 4.75     | 3.02  |
| 87370          | 89930          | 3/4      | 2.64 | 2 5/8   | 2.24 | 2 1/4   | 2.68 | 2 11/16 | 0.39 | 3/8     | 1.77 | 1 3/4            | 0.45 - 8.50     | 3.02  |
| 87375          | 89935          | 1        | 2.76 | 2 3/4   | 2.32 | 2 5/16  | 2.84 | 2 13/16 | 0.39 | 3/8     | 1.93 | 1 15/16          | 0.60 - 10.57    | 4.87  |
| 87380          | 89940          | 1 1/4    | 3.35 | 3 3/8   | 2.68 | 2 11/16 | 3.31 | 3 5/16  | 0.55 | 9/16    | 2.28 | 2 1/4            | 0.88 - 22.01    | 12.65 |
| 87385          | 89945          | 1 1/2    | 5.63 | 5 5/8   | 2.80 | 2 13/16 | 4.25 | 4 1/4   | 0.83 | 13/16   | 2.84 | 2 13/16          | 3.17 - 32.58    | 20.88 |
| 87390          | 89950          | 2        | 5.63 | 5 5/8   | 3.03 | 3 1/16  | 4.53 | 4 1/2   | 0.83 | 13/16   | 2.95 | 2 15/16          | 3.96 - 45.57    | 23.55 |

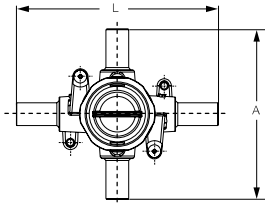


## Viega ProPress 3-Way Valve – Model 2976.3



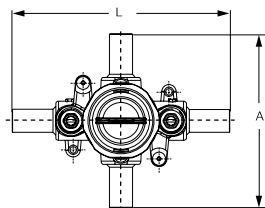
| Part No. | Size (in) | A1 (in) |        | A2 (in) |        | A3 (in) |       | L1 (in) |        | L2 (in) |        | L3 (in) |      | L4 (in) |       | Cv (US gal/min) |
|----------|-----------|---------|--------|---------|--------|---------|-------|---------|--------|---------|--------|---------|------|---------|-------|-----------------|
|          |           | 1       | Dec    | Frac    | 1      | Dec     | Frac  | 1       | Dec    | Frac    | 1      | Dec     | Frac | 1       | Dec   |                 |
| 87420    | 1/2       | 1.85    | 17/8   | 1.85    | 17/8   | 2.56    | 29/16 | 2.68    | 211/16 | 2.68    | 211/16 | 2.87    | 27/8 | 1.65    | 15/8  | 2.89            |
| 87425    | 3/4       | 2.28    | 21/4   | 2.28    | 21/4   | 2.72    | 23/4  | 3.19    | 33/16  | 3.19    | 33/16  | 3.47    | 31/2 | 2.09    | 21/16 | 5.09            |
| 87430    | 1         | 2.52    | 21/2   | 2.52    | 21/2   | 2.87    | 27/8  | 3.43    | 35/16  | 3.43    | 35/16  | 3.62    | 35/8 | 2.09    | 21/16 | 6.59            |
| 87435    | 1 1/4     | 2.68    | 211/16 | 2.68    | 211/16 | 2.99    | 3     | 3.70    | 311/16 | 3.70    | 311/16 | 3.86    | 37/8 | 2.09    | 21/16 | 8.32            |
| 87440    | 1 1/2     | 3.07    | 31/16  | 3.07    | 31/16  | 3.07    | 31/16 | 4.49    | 41/2   | 4.49    | 41/2   | 4.65    | 45/8 | 2.13    | 21/8  | 9.83            |
| 87445    | 2         | 3.07    | 31/16  | 3.07    | 31/16  | 3.31    | 35/16 | 4.65    | 45/8   | 4.65    | 45/8   | 4.72    | 43/4 | 2.32    | 25/16 | 11.56           |

## Shower Valve – Model 2842.5



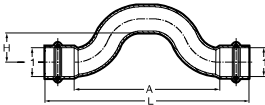
| Part No. | Stub Out (in) | A (in) |       | L (in) |       |
|----------|---------------|--------|-------|--------|-------|
|          |               | Dec    | Frac  | Dec    | Frac  |
| 93516    | 1/2           | 4.75   | 4 3/4 | 5.63   | 5 5/8 |

## Shower Valve – Model 2842.6



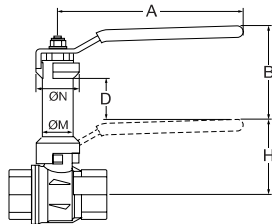
| Part No. | Stub Out (in) | A (in) |       | L (in) |       |
|----------|---------------|--------|-------|--------|-------|
|          |               | Dec    | Frac  | Dec    | Frac  |
| 93517    | 1/2           | 4.75   | 4 3/4 | 5.88   | 5 7/8 |

## Viega ProPress Cross-Over Copper P x P – Model 2928



| Part No. | Size (in) |      | A (in) |      | L (in) |      | H (in) |      |
|----------|-----------|------|--------|------|--------|------|--------|------|
|          | 1         | 1    | Dec    | Frac | Dec    | Frac | Dec    | Frac |
| 77742    | 1/2 x 1/2 | 3.62 | 3 5/8  | 5.12 | 5 1/8  | 0.77 | 3/4    |      |
| 77747    | 3/4 x 3/4 | 4.49 | 4 1/2  | 6.30 | 6 5/16 | 0.90 | 7/8    |      |

## Viega ProPress Stem Extension Brass – Model 2973.96\*



| Part No. | Valve Size (in) | ØM (in) | ØN (in) | A (in) |         | H (in) |         | B (in) |         | D (in) |        |
|----------|-----------------|---------|---------|--------|---------|--------|---------|--------|---------|--------|--------|
|          |                 |         |         | Dec    | Frac    | Dec    | Frac    | Dec    | Frac    | Dec    | Frac   |
| 23449    | 1/2             | 0.67    | 0.98    | 3.94   | 3 15/16 | 1.69   | 1 11/16 | 2.22   | 2 1/4   | 1.04   | 1 1/16 |
| 23451    | 3/4             | 0.79    | 1.10    | 4.72   | 4 3/4   | 1.97   | 2       | 2.46   | 2 7/16  | 1.08   | 1 1/16 |
| 23451    | 1               | 0.79    | 1.10    | 4.72   | 4 3/4   | 2.13   | 2 1/8   | 2.46   | 2 7/16  | 1.08   | 1 1/16 |
| 23453    | 1 1/4           | 1.02    | 1.42    | 6.22   | 6 1/4   | 2.87   | 2 7/8   | 2.66   | 2 11/16 | 0.81   | 13/16  |
| 23453    | 1 1/2           | 1.02    | 1.42    | 6.22   | 6 1/4   | 3.11   | 3 1/8   | 2.66   | 2 11/16 | 0.81   | 13/16  |
| 23453    | 2               | 1.02    | 1.42    | 6.22   | 6 1/4   | 3.46   | 3 7/16  | 2.66   | 2 11/16 | 0.81   | 13/16  |

\*For use with Models 2973, 2973.1, and 2973.3 valves



**Q What does “Zero Lead” mean?**

**A** Zero Lead identifies Viega products meeting the lead-free requirements of the federal amendment to the Safe Drinking Water Act effective January 4, 2014.

**Q What does “Lead Free” mean?**

**A** The Reduction of Lead in Drinking Water Act defines “Lead Free” as materials containing not more than 0.2 percent lead when used with respect to solder and flux and not more than a weighted average of 0.25 percent when used with respect to the wetted surfaces of pipes and pipe fittings, as well as plumbing fittings and fixtures, providing a specified definition and formula for determining “weighted average.”

**Q What is NSF-61?**

**A** In addition to toxicity testing, NSF-61 requires wetted parts to be evaluated per NSF-372 and meet a 0.25% weighted average lead content standard. Only products certified to Zero Lead standards (NSF-61 and NSF-372) can be used in potable water systems.

**Q What is a wetted surface?**

**A** “Wetted surface” refers to any and all parts of a valve or fitting that are directly in contact with potable water.

**Q Are Viega ProPress valves and fittings “Lead Free”?**

**A** Yes. Viega ProPress fittings and valves are available in Zero Lead and are listed to NSF®-61-372.

**Q What materials are used to produce Viega ProPress Zero Lead fittings?**

**A** Viega ProPress Zero Lead bronze fittings are constructed of: UNS – C87710, and UNS – C87700.

**Q What is the procedure for soldering near a Viega ProPress connection?**

**A** When soldering near a Viega ProPress connection, you must remain at least three pipe diameters away from the connection. If three pipe diameters are not possible, the installer should take proper precautions to keep the Viega ProPress connection cool while soldering. These include: wrapping the connection with a cold wet rag; fabricating solder connections prior to installing the pressed fitting; making sure the pipe has cooled before installing the fitting; applying “spray type” spot freezing product.

**Q How would inspectors know they are looking at a good connection?**

**A** Good connections can be proven by performing a pressure test. This is the same procedure for solder connections.

**Q What is the lubrication used on the sealing elements?**

**A** The sealing elements are lubricated with an H1 food-grade, silicone-based lubricant registered with NSF and the USDA. If it is necessary to lubricate the seals in the field, use water only. Do not use other lubricants, especially any petroleum-based lubricants, as petroleum and EPDM are incompatible.

**Q How long will the EPDM seal last?**

**A** When properly installed, the EPDM seal and connection will last as long as the copper pipe that joins it, 50 years.

**Q How do I fabricate a system in tight places when using Viega ProPress?**

**A** If necessary, pre-fabricate connections that are in tight places and then install.

**Q What is the warranty for Viega ProPress?**

**A** Viega ProPress fittings installed in non-industrial, non-marine environments carry a 50-year warranty against defects in material and workmanship from Viega.

**Q Can you turn a pressed fitting without damaging the integrity of the connection?**

**A** Yes. The fitting can be turned, although not by hand, and will not affect the integrity of the connection. As a general rule of thumb, if the fitting is turned more than 5° it should be re-pressed to restore the resistance to rotational movement.

**Q How do Viega ProPress connections hold up to freezing temperatures?**

**A** Copper water systems, both soldered and pressed, should not be allowed to freeze. When water freezes, it expands and will damage the pipe or the system.

**Q Can a user solder the female “P” end of a Viega ProPress fitting?**

**A** This is not a recommended practice and constitutes improper use of the product, voiding any product warranties. The recessed groove that normally houses the EPDM seal will interfere with the capillary action that normally draws solder into and around the tubing.

**Q What are the flow rates through Viega ProPress fittings?**

**A** Flow rates and flow rate calculations are the same as those used for solder-fitting installations. The friction loss tables can be found in the Viega ProPress Installation Manual.

**Q What should a user do if a Viega ProPress system leaks?**

**A** In general, Viega ProPress fittings only leak due to one of three reasons: the fitting was never pressed, the copper tubing was not properly inserted, or the pressing jaws were not properly aligned. If the fitting was never pressed, confirm that the tubing is fully inserted and proceed with pressing. If the copper tubing was not properly inserted, cut out the fitting and reinstall properly. If the pressing jaws were not properly aligned, cut out the fitting and reinstall properly. If problems persist, be sure to contact Viega immediately.

**Q Is Viega ProPress compatible with the cleaning agents used to disinfect a new plumbing system?**

**A** Yes, ProPress is compatible with system disinfection per model plumbing codes. For disinfection using other concentrations or contact times, contact a Viega District Manager or Technical Support.





**Viega LLC**

585 Interlocken Blvd.  
Broomfield, CO 80021

Ph: 800-976-9819  
Fax: 800-976-9817  
[www.viega.us](http://www.viega.us)

PG-PP 724604 0126 ProPress Systems

