

HVAC – Fan Motors

Explosion Proof
Motors

Automotive
Duty Motors

Pump
Motors

Washguard
Motors

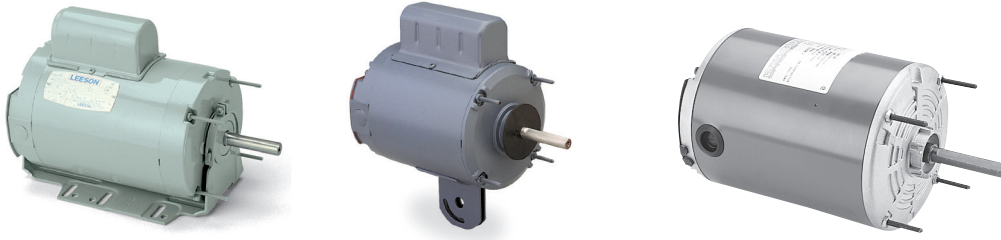
Agricultural
Duty Motors

HVAC / Fan
Motors

Special Voltage
Motors

Definite
Purpose Motors

Brake Motors



- Various voltages and mounting types available
- Single and three phase fan duty motors
- Rigid base, resilient base, pedestal base, belly band mount and extended thru-bolt mount types
- Drip-Proof, TEFC, TEAO and DPAO designs
- General purpose duty
- Agricultural duty
- UL recognized and CSA certified

Applications:

Ideally suited for a variety of fan applications requiring the motor to either be mounted in or out of the air stream for proper ventilation. Some motors have an epoxy finish for harsh applications and other motors have a baked on enamel finish. Industrial, commercial and agricultural fan motors available.



HVAC - Fan Motors

Resilient Base Motors - Single Phase Fan & Blower Service - Moderate Starting Torque

General Specifications:

- Drip-proof and totally enclosed designs
- Industrial quality, resilient (cradle) mounted
- Capacitor start-type
- Ball bearing designs
- Moderate starting torque to reduce machinery stresses
- Suitable for belt-driven fans or fan-on-shaft applications



Drip-Proof - Single Phase - Resilient Base

HP	SYN RPM 60 Hz	NEMA Frame	Catalog Number	Stock	List Price	Model Number	App. Wgt. (lbs)	Voltage	Over-load Prot.	F. L. Amps @ 230 V	Service Factor	"C" Dim. (Inches)	Notes
1/4	3600	48	101434.00	✓	320	A4C34DR8	16	115/208-230	Auto.	2.0	1.00	9.39	S, MX
	1800	48	100109.00	✓	376	A4C17DR1	17	115/208-230	Auto.	2.7	1.35	9.89	S, MX
	1800	48	100111.00	✓	325	A4C17DR3	17	115/208-230	Auto.	2.7	1.00	9.89	S, MX
	1800	48	102963.00	✓	376	A4C17DR47	17	277	Auto.	2.2*	1.35	9.89	S, MX
1/3	3600	48	101431.00	✓	329	A4C34DR11	17	115/208-230	Auto.	2.3	1.00	9.39	S, MX
	1800	48	100110.00	✓	459	A4C17DR2	18	115/208-230	Auto.	3.3	1.35	9.89	S, MX
	1800	48	101015.00	✓	376	A4C17DR31	18	115/208-230	Auto.	3.3	1.00	9.89	S, MX
	1800	S56	100014.00	D	432	C4C17DJ5	19	115/208-230	None	3.3	1.35	10.31	S, MX
	1800	S56	E100014.00	✓	541	C4K17DJ9	20	115/208-230	None	1.9	1.35	10.77	S, MX,53
	1800	S56	100010.00	✓	459	A4C17DJ2	18	115/208-230	Auto.	3.3	1.35	10.31	S, MX
	1800	S56	100063.00	✓	376	A4C17DJ9	19	115/208-230	Auto.	3.3	1.00	10.31	S, MX
	1800	S56	102964.00	✓	459	A4C17DJ72	18	277	Auto.	2.8*	1.35	10.31	S, MX
1/2	3600	48	101432.00	✓	363	A4C34DR10	20	115/208-230	Auto.	3.4	1.00	9.89	S, MX
	1800	S56	100015.00	D	466	C4C17DJ6	21	115/208-230	None	4.4	1.25	10.81	S, MX
	1800	S56	E100015.00	✓	558	C4K17DJ10	22	115/208-230	None	2.3	1.25	11.47	S, MX,53
	1800	S56	100045.00	✓	447	M4C17DJ17	20	115/208-230	Man.	4.4	1.00	10.81	S, MX
	1800	S56	101611.00	✓	494	A4C17DJ57	22	115/208-230	Auto.	4.4	1.25	10.81	S, MX, 32
	1800	S56	100011.00	✓	494	A4C17DJ3	22	115/208-230	Auto.	4.4	1.25	10.81	S, MX
	1800	S56	100064.00	✓	449	A4C17DJ10	20	115/208-230	Auto.	4.4	1.00	10.81	S, MX
	1800	S56	102965.00	✓	494	A4C17DJ74	22	277	Auto.	3.7*	1.25	10.81	S, MX
3/4	3600	48	101433.00	✓	427	A4C34DR9	22	115/208-230	Auto.	4.8	1.00	10.39	S, MX
	3600	S56H	100603.00	✓	455	A4C34DJ7	26	115/208-230	Auto.	4.9	1.25	11.31	S, MX
	1800	S56H	100016.00	D	585	C4C17DJ7	26	115/208-230	None	5.4	1.25	11.81	S, MX
	1800	S56H	E100016.00	✓	643		27	115/208-230	None				S, MX,53
	1800	S56H	100046.00	✓	611	M4C17DJ18	26	115/208-230	Man.	5.4	1.25	11.81	S, MX
	1800	S56H	100047.00	✓	511	M4C17DJ19	25	115/208-230	Man.	5.5	1.00	11.81	S, MX
	1800	S56H	101839.00	✓	611	A4C17DJ67	28	115/208-230	Auto.	5.4	1.25	11.81	S, MX, 32
	1800	S56H	100012.00	✓	611	A4C17DJ4	26	115/208-230	Auto.	5.4	1.25	11.81	S, MX
	1800	S56H	100065.00	✓	506	A4C17DJ11	25	115/208-230	Auto.	5.5	1.00	11.81	S, MX
	1800	S56H	102966.00	✓	611	A4C17DJ73	26	277	Auto.	4.5*	1.25	11.81	S, MX
1	3600	56H	110478.00	✓	525	A6C34DR6	28	115/208-230	Auto.	6.0	1.25	11.85	S, US
	1800	56H	113027.00	D	637	C6C17DR37	30	115/208-230	None	6.4	1.15	11.81	S, US
	1800	56H	E113027.00	✓	693	C6K17DR43	31	115/208-230	None	4.2	1.15	12.88	S, MX,53
	1800	56H	110007.00	✓	662	A6C17DR1	29	115/208-230	Auto.	6.4	1.15	11.81	S, US
	1800	56H	110054.00	✓	647	A6C17DR2	32	115/208-230	Auto.	6.4	1.00	11.81	S, US
	1800	56H	116599.00	✓	662	A6C17DR54	29	277	Auto.	5.4*	1.20	11.82	S, US
1 1/2	3600	56H	110479.00	✓	675	A6C34DR7	30	115/230	Auto.	8.2	1.15	11.82	S, US
	1800	56H	110579.00	✓	801	A6K17DR6	38	115/208-230	Auto	7.2	1.15	12.82	S, US, 6, 53
	1800	56H	116600.00	C/A	801	A6K17DR41	38	277	Auto	6.0*	1.15	12.82	S, US
2	3600	56H	113633.00	D	845	U6C34DR21	38	115/208-230	Auto.	10.0	1.15	13.82	S, US
	1800	56H	113608.00	✓	853	A6K17DR28	45	115/208-230	Auto.	10.0	1.15	13.81	S, US, 6, 53
	1800	56H	116601.00	✓	853	A6K17DR42	45	277	Auto.	8.7*	1.15	13.82	S, US

Green items are Premium Efficient

* F.L. Amps at 277V

Specifications are subject to change without notice

♥ Note listing on inside back flap

D-Item to be discontinued once inventory is depleted

C/A - Check Availability

Please view our on-line catalog for updated information that was unavailable at the time of this printing.

View On-line Technical Information



Explosion Proof Motors

Automotive Duty Motors

Pump Motors

Washguard Motors

Agricultural Motors

HVAC / Fan Motors

Special Voltage Motors

Definite Purpose Motors

Brake Motors

HVAC – Fan Motors

Single Phase - TEFC - Resilient Base

Features:

- Industrial quality, resilient (cradle) mounted
- High starting torque
- Automatic overload protected
- Suitable for belt-driven fans or fan-on-shaft applications



Single Phase - TEFC - Resilient Base

HP/ kW	RPM 60Hz	NEMA Frame	Catalog Number	Stock	List Price	Model Number	App. Wgt. (lbs)	Voltage	Over- load Prot.	F. L. Amps @ 230 V	Service Factor	"C" Dim. (Inches)	♥Notes
1/2	1725	56	110025.00	√	560	A6C17FR1	26	115/208-230	Auto.	4.4	1.15	11.96	S, US
3/4	1725	56	110026.00	√	671	A6C17FR2	28	115/208-230	Auto.	5.4	1.15	12.46	S, US, 6
1	1725	56H	111915.00	√	762	A6C17FR10	31	115/208-230	Auto.	6.4	1.15	12.96	S, US, 6

Specifications are subject to change without notice

♥ Note listing on inside back flap

Wattsaver® Premium Efficiency Fan Motors

Features:

- Premium efficient
- Class F insulation
- Terminal boards
- Automatic overload protected



Single Phase - Drip-Proof - Resilient Base

HP/ kW	RPM 60Hz	NEMA Frame	Catalog Number	Stock	List Price	Model Number	App. Wgt. (lbs)	Voltage	Over- load Prot.	F. L. Amps @ 230 V	Service Factor	% F.L. Eff.	"C" Dim. (Inches)	♥Notes
1/4	1800	48	101602.00	√	417	A4K17DR7	19	115	Auto.	2.5	1.35	71.00	10.39	S, MX, 32
1/3	1800	48	101405.00	√	493	A4K17DR5	19	115	Auto.	3.2	1.35	75.00	10.39	S, MX, 32
1/2	1800	48	101585.00	√	564	A4K17DR6	25	115	Auto.	4.6	1.35	76.00	11.39	S, MX, 32

Green items are Premium Efficient

Specifications are subject to change without notice

♥ Note listing on inside back flap



View On-line Technical Information



HVAC - Fan Motors

Resilient Base Motors - Three Phase Fan & Blower Service

General Specifications:

- Industrial quality, resilient (cradle) mounted
- Ball bearing design
- Moderate starting torque to reduce fan stresses
- Suitable for belt-driven fans or fan-on-shaft applications



Three Phase - TEFC - Resilient Base

HP	RPM 60 Hz	NEMA Frame	Catalog Number	Stock	List Price	Model Number	App. Wgt. (lbs)	Voltage	Over- load Prot.	F. L. Amps @ 230 V	Service Factor	% F.L. Eff.	"C" Dim. (Inches)	♥Notes
1/2	1725	56	111917.00	√	526	C6T17NR1	25	208-230/460	None	1.8	1.15	78.5	11.31	S, US, 6, 12
1	1725	56	111918.00	√	592	C6T17FR1	29	208-230/460	None	3.8	1.15	77.0	12.46	S, US, 6

Note 12 - TENV

♥ Note listing on inside back flap

Specifications are subject to change without notice

Drip-Proof - Three Phase - Resilient Base

HP	SYN RPM 60 Hz	NEMA Frame	Catalog Number	Stock	List Price	Model Number	App. Wgt. (lbs)	Voltage	Over- load Prot.	F. L. Amps @ 230 V	Service Factor	% F.L. Eff.	"C" Dim. (Inches)	♥Notes
1/3	3450	S56	101639.00	√	382	A4T34DJ4	17	208-230/460	Auto.	1.7	1.35	61.0	10.31	S, US, 33
	1725	S56	100210.00	√	417	C4T17DJ3	18	208-230/460	None	1.6	1.35	64.3	10.31	S, MX
	1725	S56	E100210.00	√	457		19	208-230/460	None		1.35	73.4		S, MX
1/2	1725	S56	101520.00	√	506	A4T17DJ18	19	208-230/460	Auto.	1.6	1.35	64.3	10.81	S, MX, 33
	3450	S56	101640.00	C/A	459	A4T34DJ3	18	208-230/460	Auto.	2.4	1.25	69.0	10.31	S, US, 33
	1725	S56	100145.00	√	478	C4T17DJ1	22	208-230/460	None	2.0	1.25	68.0	10.81	S, MX
3/4	1725	S56	E119360.00	√	534		23	208-230/460	None		1.25	78.2		S, MX
	1725	S56	100796.00	√	556	A4T17DJ10	22	208-230/460	Auto.	2.0	1.25	68.0	11.31	S, MX
	3450	S56	E101773.00	√	480	C4T34DJ8	20	208-230/460	None	2.4	1.25	79.0	10.81	S, US
1	3450	S56	E101773.00	√	480	C4T34DJ8	20	208-230/460	None	2.4	1.25	79.0	10.81	S, MX
	3450	S56	E101641.00	√	560	A4T34DJ5	20	208-230/460	Auto.	2.4		79.0	11.31	S, US, 33
	1725	S56	100146.00	√	530	C4T17DJ2	25	208-230/460	None	2.8	1.25	75.0	11.31	S, MX
1/2	1725	S56	E119361.00	√	572		26	208-230/460	None		1.25	81.1		S, MX
	1725	S56	100908.00	√	603	A4T17DJ13	26	208-230/460	Auto.	2.8	1.25	75.0	11.81	S, US, 33
	3450	S56	E114192.00	√	511	C6T34DR35	24	208-230/460	None	3.2	1.25	77.0	10.82	S, US
1	3450	S56	E114192.00	√	511	C6T34DR35	24	208-230/460	None	3.2	1.25	77.0	10.82	S, US
	3450	S56	113895.00	C/A	591	A6T34DR30	25	208-230/460	Auto.	3.2	1.25	77.0	10.82	S, US, 33
	1725	S56	110052.00	√	557	C6T17DR1	23	208-230/460	None	4.2	1.15	78.5	11.31	S, US
1/2	1725	S56	E110052.00	√	720	CRT17DR37	24	208-230/460	None	3.2	1.15	83.5		S, US
	1725	S6H	111311.00	√	626	A6T17DR11	27	208-230/460	Auto.	4.2	1.15	78.5	11.31	S, US, 33
	3450	S6H	114194.00	C/A	622	C6T34DR36	31	208-230/460	None	4.2	1.15	81.5	11.82	S, US
1/2	3450	S6H	E114194.00	C/A	737	C6T34DR3	31	208-230/460	None	4.0	1.15	84.0		S, US
	3450	S6H	113896.00	C/A	670	A6T34DR31	29	208-230/460	Auto.	4.2	1.15	81.5	11.82	S, US, 33
	1725	S6H	110433.00	√	641	C6T17DR4	32	208-230/460	None	5.6	1.15	78.5	11.81	S, US
1	1725	S6H	E110433.00	√	773	C6T17DR38	33	208-230/460	None	4.8	1.15	86.5		S, US
	1725	S6H	113846.00	√	664	A6T17DR25	29	208-230/460	Auto.	5.6	1.15	78.5	11.81	S, US, 49
	2	3450	S6H	114196.00	C/A	721	C6T34DR37	36	208-230/460	None	5.6	1.15	82.9	12.32
1	3450	S6H	E114196.00	C/A	814	C6T34DR38	37	208-230/460	None	4.8	1.15	86.5		S, US
	3450	S6H	113897.00	√	776	A6T34DR32	39	208-230/460	Auto.	5.6	1.15	82.9	12.32	S, US, 33
	1725	S6H	114197.00	√	696	C6T17DR29	37	208-230/460	None	6.2	1.15	78.5	12.31	S, US
1	1725	S6H	E114197.00	√	849	C6T17DR39	38	208-230/460	None	5.8	1.15	86.5		S, US
	1725	S6H	113847.00	√	762	A6T17DR26	34	208-230/460	Auto.	6.2	1.15	78.5	12.31	S, US, 33
	3	3450	S6HZ	113926.00	√	767	U6T34DR33	40	208-230/460	Auto.	7.6	1.00	84.0	13.19
1	1725	S6HZ	116593.00	√	835	A6T17DR33	47	230/460	Auto.	8.6	1.15	82.5	14.19	S, US, 33

Green items are Premium Efficient

C/A - Check Availability

Specifications are subject to change without notice

♥ Note listing on inside back flap

Please view our on-line catalog for updated information that was unavailable at the time of this printing.

View On-line Technical Information



Explosion Proof Motors

Automotive Duty Motors

Pump Motors

Washguard Motors

Agricultural Motors

HVAC / Fan Motors

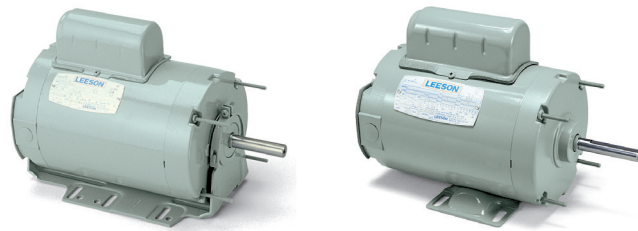
Special Voltage Motors

Definite Purpose Motors

Brake Motors

HVAC – Fan Motors

Fan & Blower Motors - Multi-Speed - Single & Three Phase



Features:

- Variable torque
- PSC Type for shaft mounted fan applications
- Overload protected with a UL and CSA recognized automatic reset protector
- Listed speed or two speed operation using the proper auxiliary switch - reference drawing 005210.01
- Variable speed by using a variable voltage control
- Overload protected with a UL and CSA recognized automatic reset protector
- Must be mounted in airstream for proper motor cooling
- Extended through-bolts
- Epoxy painted motors

Single Phase - TEAO - PSC Type - Resilient Base

HP/ kW	RPM 60 Hz	NEMA Frame	Catalog Number	Stock	List Price	Model Number	App. Wgt. (lbs)	Voltage	Over- lod Prot.	F. L. Amps @ 230 V	Service Factor	"C" Dim. (Inches)	♥Notes
1/4	1625	48Z	100803.00	✓	370	A4P17NR1	19	115/230	Auto.	1.4	1.00	10.66	S, MX, 16, 34
	1075	48Z	100824.00	✓	419	A4P11NR2	20	115/230	Auto.	1.4	1.00	10.66	S, MX, 16, 34
	1075	S56Z	100805.00	✓	464	A4P11NJ1	22	115/230	Auto.	1.4	1.00	11.06	S, MX, 17, 34
1/3	1625	48Z	100804.00	✓	385	A4P17NR2	21	115/230	Auto.	1.6	1.00	10.66	S, MX, 16, 34
	1625	S56H	100767.00	✓	444	A4P17NJ1	22	115/230	Auto.	1.6	1.00	10.31	S, MX, 34
	1625	56HY	111348.00	✓	485	A6P17NZ6	24	115/230	Auto.	1.7	1.00	13.44	S, US, 59
	1075	48Z	100825.00	✓	455	A4P11NR3	25	115/230	Auto.	1.8	1.00	11.16	S, MX, 16, 34
	1075	S56HZ	100806.00	✓	488	A4P11NJ2	27	115/230	Auto.	1.8	1.00	11.56	S, MX, 17, 34
1/2	1625	56HZ	111323.00	✓	554	A6P17NR3	30	115/230	Auto.	2.6	1.00	12.56	S, US, 17, 34
	1625	S56H	100768.00	✓	457	A4P17NJ2	36	115/230	Auto.	2.2	1.00	10.81	S, MX, 34
	1075	48Z	101645.00	✓	491	A4P11NR6	33	115/230	Auto.	2.8	1.00	11.16	S, MX, 16, 34
	1075	56HZ	111321.00	✓	575	A6P11NR1	37	115/230	Auto.	3.0	1.00	13.56	S, US, 17, 34
	825	56HZ	111919.00	✓	645	A6P8NR2	40	115/230	Auto.	3.2	1.00	13.56	S, US, 17, 34, 50
3/4	1625	56HZ	111324.00	✓	606	A6P17NR4	34	115/230	Auto.	3.5	1.00	13.06	S, US, 17
	1625	56H	111266.00	✓	606	A6P17NR1	36	115/230	Auto.	3.5	1.00	12.31	S, US,
	1075	56HZ	111322.00	✓	652	A6P11NR2	44	115/230	Auto.	4.0	1.00	13.56	S, US, 17, 50
1	1625	56HZ	111267.00	✓	678	A6P17NR2	39	115/230	Auto.	4.4	1.00	12.81	S, US,

Specifications are subject to change without notice

♥ Note listing on inside back flap

Single Phase - TEAO - PSC Type - Rigid Base

HP/ kW	RPM 60 Hz	NEMA Frame	Catalog Number	Stock	List Price	Model Number	App. Wgt. (lbs)	Voltage	Over- lod Prot.	F. L. Amps @ 230 V	Service Factor	"C" Dim. (Inches)	♥Notes
1/4	1625	48Y	100699.00	✓	353	A4P17NB7	19	115/230	Auto.	1.4	1.00	10.65	S, MX
	1750	48Y	101252.00	✓	353	A4P17NB27	19	115/208-230	Auto.	1.5	1.00	10.40	S, MX, 50
1/3	1625	48Y	100700.00	✓	400	A4P17NB8	21	115/230	Auto.	1.6	1.00	10.65	S, MX
	1625	56Y	111202.00	C/A	462	A6P17NZ1	27	115/230	Auto.	1.7	1.00	12.00	S, US, 62
	1750	48Y	101253.00	✓	400	A4P17NB28	22	115/208-230	Auto.	1.9	1.00	10.65	S, MX, 50
	1140	S56Z	100604.00	✓	467	A4P11NH1	23	115/230	Auto.	1.8	1.00	11.40	S, MX
1/2	1625	48Y	100701.00	✓	430	A4P17NB9	25	115/230	Auto.	2.5	1.00	12.15	S, MX
	1750	S56Y	101176.00	✓	440	A4K17NH2	24	115/230	Auto.	3.5	1.00	10.40	S, MX, 50, 54

C/A - Check Availability

♥ Note listing on inside back flap

Motor 101176.00 must be mounted within the airflow of the fan

Specifications are subject to change without notice



View On-line Technical Information



Features:

- Belted or fan-on-shaft applications
- Can be mounted within or outside the fan's airstream
- Resilient mounted for quiet operation
- 3/4 HP and larger single phase are capacitor start motors; smaller single phase are split phase start.
- Ball bearings



Single Phase - Drip-Proof - Resilient Base

HP	RPM 60 Hz	NEMA Frame	Catalog Number	Stock	List Price	Model Number	App. Wgt. (lbs)	Voltage	F. L. Amps High/ Low	Service Factor	"C" Dim. (Inches)	♥Notes
1/4-1/12	1725	48Z	101020.00	√	397	C4S46DR1	20	115	4.2-3.2	1.00	11.64	S, US, 16
1/3-0.15	1725	S56H	101021.00	√	505	C4S46DJ1	26	115	5.0-4.6	1.00	12.27	S, MX
1/2-1/4	1725	56H	111953.00	√	631	C6S46DR1	33	115	7.8-4.6	1.00	12.31	S, US
	1725	56H	113643.00	√	631	C6S46DR2	33	230	3.9-2.3	1.00	12.31	S, US
3/4-1/3	1725	56H	111954.00	√	915	C6C46DR2	38	115	11.6-7.4	1.00	12.81	S, US, 6
	1725	56H	113672.00	√	915	C6C46DR5	39	230	5.8-3.7	1.15	12.81	S, US, 6
1-0.44	1725	56H	111955.00	√	1,077	C6K46DR1	41	115	13.2-9.5	1.00	12.81	S, US, 6, 53
	1725	56H	113373.00	√	1,077	C6K46DR3	39	230	6.5-4.6	1.00	12.81	S, US, 6, 53

Specifications are subject to change without notice

♥ Note listing on inside back flap

Three Phase - Drip-Proof - Resilient Base

HP	RPM 60 Hz	NEMA Frame	Catalog Number	Stock	List Price	Model Number	App. Wgt. (lbs)	Voltage	F. L. Amps High/ Low	Service Factor	"C" Dim. (Inches)	♥Notes
1/2-.22	1725	56H	111956.00	√	951	C6T46DR1	32	208-230	1.8-1.1	1.00	12.31	S, US
	1725	56H	111957.00	C/A	951	C6T46DR2	32	460	0.9-0.5	1.00	12.31	S, US
3/4-1/3	1725	56H	111958.00	√	1,003	C6T46DR3	36	208-230	2.8-1.6	1.00	13.82	S, US, 6
	1725	56H	111959.00	C/A	1,003	C6T46DR4	36	460	1.4-0.8	1.00	12.81	S, US, 6
1-0.44	1725	56H	111960.00	√	1,077	C6T46DR5	40	208-230	4.0-2.4	1.00	12.81	S, US, 6
	1725	56H	111961.00	√	1,077	C6T46DR6	40	460	1.8-1.0	1.00	12.81	S, US, 6
1 1/2-.67	1725	56H	111962.00	√	1,306	C6T46DR7	40	208-230	5.0-2.6	1.00	12.81	S, US, 6
	1725	56H	111963.00	√	1,306	C6T46DR8	40	460	2.5-1.3	1.00	12.81	S, US, 6

C/A - Check Availability

♥ Note listing on inside back flap

Specifications are subject to change without notice

View On-line Technical Information



Explosion Proof
Motors

Automotive
Duty Motors

Pump
Motors

Washguard
Motors

Agricultural
Motors

HVAC / Fan
Motors

Special Voltage
Motors

Definite
Purpose Motors

Brake Motors

HVAC – Fan Motors

Aeration Fan Motors

Totally Enclosed Air Over Motors (TEAO)

Features:

- Suitable for shaft mounted fans
- Capacitor start designs
- Designed to run in the airflow of the driven fan
- Epoxy enamel finish to resist corrosion
- Ball bearing designs



Single Phase - Capacitor Start - TEAO - Rigid Base

HP	RPM 60 Hz	NEMA Frame	Catalog Number	Stock	List Price	Model Number	App. Wgt. (lbs)	Voltage	F. L. Amps 230V	Service Factor	"C" Dim. (Inches)	♥Notes
3/4	3450	56	111332.00	✓	460	C6C34NB15	27	115/230	5.0	1.00	10.90	S, US, 22
1	3450	56	111333.00	✓	546	C6C34NB16	29	115/230	6.0	1.00	10.90	S, US, 22
1 1/2	3450	56	111949.00	✓	706	C6C34NB19	32	115/230	8.5	1.00	11.40	S, US, 22
	3450	143TZ	120374.00	✓	759	C143C34NB1	31	115/230	8.5	1.00	11.84	S, US, 22
2	3450	145TZ	120375.00	✓	924	C145C34NB1	41	230	10.0	1.00	13.34	S, US, 23
3	3450	145T	120376.00	✓	973	C145K34NB1	45	230	12.8	1.00	13.84	S, US, 53

Specifications are subject to change without notice

♥ Note listing on inside back flap

Three Phase - TEAO - Rigid Base

HP	RPM 60 Hz	NEMA Frame	Catalog Number	Stock	List Price	Model Number	App. Wgt. (lbs)	Voltage	F. L. Amps @ 230V	F.L. Eff	Service Factor	"C" Dim. (Inches)	♥Notes
3/4	3450	56Z	111334.00	✓	471	C6T34NB18	21	208-230/460	2.4	75.5	1.00	9.90	S, US, 22
1	3450	56Z	111335.00	✓	511	C6T34NB19	22	208-230/460	3.2	77.0	1.00	9.90	S, US, 22
1 1/2	3450	143TZ	120377.00	✓	587	C143T34NB2	31	208-230/460	4.2	82.5	1.00	11.34	S, US, 22
2	3450	145TZ	120378.00	✓	695	C145T34NB1	34	208-230/460	5.6	82.5	1.00	11.84	S, US, 22
3	3450	145T	120379.00	✓	779	C145T34NB2	38	230/460	7.6	84.0	1.00	12.34	S, US, 23

Specifications are subject to change without notice

♥ Note listing on inside back flap



View On-line Technical Information



Ventilation Fan Motor - Dust-Tight - Shaft Mounted

Features:

- Permanent split capacitor start motors
- Direct drive exhaust ventilation fans
- Extended thru-bolt designs
- Built in terminal panel for quick connections
- Motors must be mounted in the mounted fan's airstream



Single Phase - PSC Type - TEAO - Thru-Bolt Mount

HP	RPM 60 Hz	NEMA Frame	Catalog Number	Stock	List Price	Model Number	App. Wgt. (lbs)	Voltage	Over- load Prot.	F. L. Amps 230V	Service Factor	"C" Dim. (Inches)	♥Notes
1/3	1625	48Y	M090085.00	D	391	A4P17NZ58	20	115/230	Auto	1.8	1.00	10.79	S, CN
	1625	48Y	103783.00	✓	391	A4P17NZ132	22	115/230	Auto	1.7	1.00	10.93	S, MX
1/2	1625	48Y	M090086.00	D	422	A4P17NZ56	22	115/230	Auto	2.5	1.00	10.79	S, CN
	1625	48Y	103782.00	✓	422	A4P17NZ131	20	115/230	Auto	2.7	1.00	11.18	S, MX
	825	56Z	114620.00	✓	733	A6P8NZ2	35	115/230	Auto	3.2	1.00	12.63	S, US, 50
	850	48Y	M099250.00	D	474	A4P8NZ1	24	115/230	Auto	3.0	1.00	11.00	S, CN, 20, 50
	850	48Y	A099250.00	✓	474	A4P8NZ17	24	115/230	Auto	3.2	1.00	10.80	S, MX, 20, 50

D = Item to be obsoleted once inventory has been depleted

♥ Note listing on inside back flap

Specifications are subject to change without notice

Single Phase - PSC Type - TEAO - C Face Less Base

HP	RPM 60 Hz	NEMA Frame	Catalog Number	Stock	List Price	Model Number	App. Wgt. (lbs)	Voltage	Over- load Prot.	F. L. Amps @ 230V	Service Factor	"C" Dim. (Inches)	♥Notes
1/2	850	S56C	M099251.00	D	478	A4P8NC2	24	115/230	Auto	3.0	1.00	10.40	S, CN, 25
	825	S56C	A099251.00	✓	478	A4P8NC3	24	115/230	Auto	3.0	1.15	10.05	S, MX, 25
1	850	S56CZ	M009644.00	D	801	M009644	45	230	Auto	4.6	1.10	15.60	S, CN, 21, 50
	850	S56CZ	A009644.00	✓	801	A6P8NC7	45	230	Auto	4.7	1.15	16.10	S, MX, 21, 50

D = Item to be obsoleted once inventory has been depleted

♥ Note listing on inside back flap

Specifications are subject to change without notice

Three Phase - PSC Type - TEAO - C Face Less Base

HP	RPM 60 Hz	NEMA Frame	Catalog Number	Stock	List Price	Model Number	App. Wgt. (lbs)	Voltage	Over- load Prot.	F. L. Amps @ 230V	Service Factor	"C" Dim. (Inches)	♥Notes
1/2	850	56C	116201.00	✓	660	C6T8NC37	35	208-230/460	3.0	1.00	10.90	S, US S, CN, 25	
1	850	56C	116202.00	✓	820	C6T8NC38	45	208-230/460	5.0	1.00	12.90	S, US S, MX, 25	

Specifications are subject to change without notice

♥ Note listing on inside back flap

View On-line Technical Information



Explosion Proof
Motors

Automotive
Duty Motors

Pump
Motors

Washguard
Motors

Agricultural
Motors

HVAC / Fan
Motors

Special Voltage
Motors

Definite
Purpose Motors

Brake Motors

HVAC – Fan Motors

Condenser Fan Motors

Features:

- For shaft mounted fan applications
- Belly band and rigid mount designs
- Designed for vertical shaft up applications
- Enclosed shaft end endshield protects against contaminants
- Automatic overload protection
- Double sealed ball bearings
- **NOT FOR USE WITH INVERTERS**



Three Phase - Drip-Proof - Belly Band & Rigid Mount

HP	RPM 60 Hz	NEMA Frame	Catalog Number	Stock	List Price	Model Number	App. Wgt. (lbs)	Voltage	F. L. Amps @ 230V	F.L. Eff	Service Factor	"C" Dim. (Inches)	♥Notes
1/2	1140	56Y	116772.00	√	674	A6T11Z3	25	208-230/460	2.8	66.0	1.15	12.56	S, US, 58
3/4	1140	56Y	116773.00	√	730	A6T11Z2	31	208-230/460	3.4	75.5	1.15	13.06	S, US, 58
1	1140	56Y	111147.00	√	829	A6T11DZ1	37	208-230/460	3.6	77.0	1.15	14.06	S, US, 58
	1140	56Y	115778.00	√	769	A6T11DB20	37	208-230/460	4	77.0	1.15	14.05	S, US, 60
1 1/2	1140	56Y	111148.00	√	905	A6T11DZ2	42	208-230/460	5.2	78.0	1.15	15.06	S, US, 58
	1140	56HY	115779.00	√	836	A6T11DB21	39	208-230/460	5.6	79.0	1.15	15.55	S, US, 60

Note 58 - Belly Band Mount

♥ Note listing on inside back flap

Note 60 - Rigid Base Mount

Specifications are subject to change without notice

Fan & Blower Motors

Single Phase - Commercial Duty

Designed for continuous duty use in ventilation fans, blowers and other belt driven or fan-on-shaft applications.

Features:

- Split phase design motors
- Belt driven or fan-on-shaft applications
- Resilient base for quiet operation
- Automatic overload protection
- Built-in terminal panel for easy connection



Single Phase - Drip-Proof - Resilient Base

HP	RPM 60 Hz	NEMA Frame	Catalog Number	Stock	List Price	Model Number	App. Wgt. (lbs)	Voltage	Over- load Prot.	F. L. Amps @ 115 V	Service Factor	"C" Dim. (Inches)	♥Notes
1/4	1725	48	191868.00	D	270	A4S17DR55	15	115/230	Auto.	2.3	1.35	9.37	S, CN, 32
	1725	48	103797.00	√	270	A4S17DR71	15	115/230	Auto.	2.6	1.35	9.93	S, MX, 32
1/3	1725	48	191869.00	D	291	A4S17DR56	17	115/230	Auto.	3.3	1.35	9.88	S, CN, 32
	1725	48	103795.00	√	291	A4S17DR69	17	115/230	Auto.	2.8	1.35	10.18	S, MX, 32
1/2	1725	48	191870.00	D	336	A4S17DR57	19	115/230	Auto.	4.6	1.25	10.39	S, CN, 32
	1725	48	103796.00	√	336	A4S17DR70	20	115/230	Auto.	4.6	1.25	10.18	S, MX, 32

D = Item to be obsoleted once inventory is depleted

♥ Note listing on inside back flap

Specifications are subject to change without notice



View On-line Technical Information



Residential / Industrial - Split Phase - Belted Fan Motors

Designed for use in air conditioners, roof ventilators and exhaust fans.

Features:

- Low starting torque
- Ball bearings
- Resilient “cradle” style base
- Automatic overload protection



Single Phase - Split Phase - Drip-Proof - Resilient Base

HP	RPM 60 Hz	NEMA Frame	Catalog Number	Stock	List Price	Model Number	App. Wgt. (lbs)	Voltage	Over- load Prot.	F. L. Amps @ 115 V	Service Factor	"C" Dim. (Inches)	♥Notes
1/4	1725	48YZ	M900195.00	√	246	48S17D1301	13	115	Auto.	5.0	1.35	9.72	S, MX, 7
1/3	1725	56	M900277.00	√	474	56S17D7208	20	115	Auto.	5.3/2.9	1.35	10.78	S, MX
	1725	48YZ	M900196.00	√	290	48S17D1303	15	115	Auto.	6.1	1.35	9.72	S, MX, 7
1/2	1725	56	M900599.00	C/A	593	56S17D5710	30	115	Auto.	8.4/4.5	1.25	11.85	S, US
	1725	48YZ	M900197.00	√	379	48S17D1302	20	115	Auto.	7.2	1.25	10.72	S, MX, 7

C/A = Check Availability

♥ Note listing on inside back flap

Note 7 - includes sleeve to convert shaft to 5/8 inch

Specifications are subject to change without notice

Premium Efficiency - Industrial / Residential - Belted Fan Motors

Designed for use in residential or industrial belted fan applications.

Features:

- High efficiency designs
- Ball bearings
- Special balanced rotors
- Spade connectors on terminal board
- Automatic overload protection
- Drop-in replacement for most standard belted-fan motors
- Extremely quiet running compared to standard fan motors
- Consumes approximately half of the power of a standard fan motor



Single Phase - Drip-Proof - Resilient Base

HP	RPM 60 Hz	NEMA Frame	Catalog Number	Stock	List Price	Model Number	App. Wgt. (lbs)	Voltage	Over- load Prot.	F. L. Amps @ 115 V	Service Factor	"C" Dim. (Inches)	♥Notes
1/4	1725	48	M090602.00	D	320	A4K17DR11	15	115	Auto.	2.5	1.00	9.88	S, CN, 32, 55
	1725	48	A090602.00	√	320	A4K17DR14	15	115	Auto.	2.4	1.35	10.39	S, MX, 32, 55
1/3	1725	48	M090405.00	D	336	A4K17DR9	19	115	Auto.	3.2	1.35	9.88	S, CN, 32, 55
	1725	48	A090405.00	√	336	A4K17DR15	19	115	Auto.	3.2	1.35	10.39	S, MX, 32, 55
1/2	1725	48	M090585.00	D	413	A4K17DR10	22	115	Auto.	4.6	1.00	10.50	S, CN, 32, 53
	1725	48	A090585.00	√	413	A4K17DR13	22	115	Auto.	5.0	1.35	11.64	S, MX, 32, 53

D - Item to be discontinued once inventory is depleted

♥ Note listing on inside back flap

Specifications are subject to change without notice

View On-line Technical Information



Explosion Proof
Motors

Automotive
Duty Motors

Pump
Motors

Washguard
Motors

Agricultural
Motors

HVAC / Fan
Motors

Special Voltage
Motors

Definite
Purpose Motors

Brake Motors

HVAC – Fan Motors

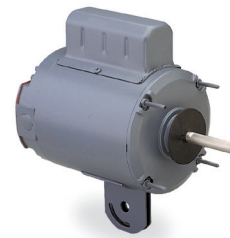
Pedestal Fan Motors - PSC Type



Designed for use where the fan is mounted directly to the motor shaft Yoke style mount is industry standard type mount.

Features:

- Drop-in replacement for most standard belted-fan motors
- Extremely quiet running compared to standard fan motors
- Consumes approximately half of the power of a standard fan motor
- Permanent split capacitor type
- Ball bearing design
- Heavy-gauge steel yoke is welded to the motor frame
- 10-32 mounting studs are extended 1.0" on 5.14" bolt circle
- Motors are UL and CSA recognized for both the U.S. and Canadian markets
- Automatic overload protection



Single Phase - PSC Type - TEAO - Yoke Mount

HP	RPM 60 Hz*	NEMA Frame	Catalog Number	Stock	List Price	Model Number	App. Wgt. (lbs)	Voltage	Over- load Prot.	F. L. Amps @ 230 V	Service Factor	Shaft Dia.	"C" Dim. (Inches)	♥Notes
1/4	1625	48Y	191872.00	D	270	A4P17NZ63	14	115/230	Auto.	2.6	1.00	0.50	10.95	S, CN
	1625	48Y	103711.00	√	270	A4P17NZ117	22	115/230	Auto.	3.6	1.00	0.50	10.81	S, MX
	1625	48Y	191908.00	D	270	A4P17NZ64	14	115/230	Auto.	2.6	1.00	0.63	10.95	S, CN
	1625	48Y	103712.00	√	270	A4P17NZ118	23	115/230	Auto.	3.6	1.00	0.63	10.81	S, MX
1/3	1075	48Y	191891.00	D	299	A4P11NZ26	22	115/230	Auto.	2.4	1.00	0.50	10.95	S, CN
	1075	48Y	103713.00	√	299	A4P17NZ119	18	115	Auto.	3.2	1.00	0.50	10.06	S, MX
	1075	48Y	191909.00	D	299	A4P11NZ27	25	115/230	Auto.	2.4	1.00	0.63	10.95	S, CN
	1075	48Y	103714.00	√	299	A4P17NZ120	18	115	Auto.	3.2	1.00	0.63	10.06	S, MX
1/2	1625	48Y	103715.00	√	296	A4P17NZ121	24	115/230	Auto.	3.5	1.00	0.50	10.81	S, MX
	1625	48Y	191910.00	D	296	A4P17NZ66	15	115/230	Auto.	3.4	1.00	0.63	10.95	S, CN
	1625	48Y	103716.00	√	296	A4P17NZ122	20	115/230	Auto.	3.5	1.00	0.63	10.81	S, MX
	1075	48Y	191892.00	D	335	A4P11NZ28	23	115/230	Auto.	3.0	1.00	0.50	11.46	S, CN
1/2	1075	48Y	103717.00	√	335	A4P17NZ123	20	115	Auto.	4.2	1.00	0.50	10.06	S, MX
	1075	48Y	103718.00	√	335	A4P17NZ124	25	115	Auto.	4.2	1.00	0.63	10.06	S, MX
	1625	48Y	103719.00	√	341	A4P17NZ125	25	115/230	Auto.	5.4	1.00	0.50	11.06	S, MX
	1625	48Y	103720.00	√	341	A4P17NZ126	25	115/230	Auto.	5.4	1.00	0.63	11.06	S, MX
1/2	1075	48Y	191893.00	D	388	A4P11NZ30	26	115/230	Auto.	5.0	1.00	0.50	11.93	S, CN
	1075	48Y	103721.00	√	388	A4P17NZ127	25	115	Auto.	5.7	1.00	0.50	11.06	S, MX
	1075	48Y	191912.00	D	388	A4P11NZ31	26	115/230	Auto.	5.0	1.00	0.63	11.93	S, CN
	1075	48Y	103722.00	√	388	A4P17NZ128	25	115	Auto.	5.7	1.00	0.63	11.06	S, MX

* Two-speed operation possible by connecting 115V power to 230V connections.

Actual speed (approx. 67% of rated speed) will depend on fan blade design.

^ - F.L. Amps at 230 V

D - Item to be discontinued once inventory is depleted

Specifications are subject to change without notice

♥ Note listing on inside back flap



View On-line Technical Information



HVAC - Fan Motors

Two-Speed Motors

Three Phase - Variable and Constant Torque

Variable torque motors are typically used on applications such as fans, blowers and centrifugal pumps.

Constant torque motors are typically used on mixers, compressors, conveyors, extractors, feeders and laundry machinery.

Constant horsepower motors are typically used on machine tools such as drills, lathes, punch presses and milling machines.



Features:

- Two-speed, single winding designs
- Totally enclosed fan cooled designs
- Ball bearing designs
- Single voltage designs

Variable Torque - 460 Volt - Three Phase - TEFC - Rigid Base

HP	RPM 60 Hz	NEMA Frame	Catalog Number	Stock	List Price	Model Number	App. Wgt. (lbs)	Voltage	F. L. Amps @ 460 V	Service Factor	"C" Dim. (Inches)	♥Notes
1/25	1800/900	143T	120945.00	C/A	977	C143T48FB7	36	460	1.6-0.7	1.0	12.75	S, US
1.5/37	1800/900	145T	120941.00	✓	1,017	C145T48FB60	36	460	2.4-1.0	1.0	12.75	S, US
2/5	1800/900	145T	120940.00	C/A	1,185	C145T48FB48	36	460	3.2-1.3	1.0	12.75	S, US
3/7.5	1800/900	184T	131474.00	C/A	1,269	C184T48FB67	77	460	4.0-1.8	1.0	14.46	S, MX
5/1.2	1800/900	184T	131475.00	✓	1,620	C184T48FB68	107	460	6.5-2.5	1.0	15.96	S, MX
7.5/1.9	1800/900	215T	140447.00	✓	2,283	C215T48FB46	155	460	9.7-3.3	1.0	17.71	S, MX
10/2.5	1800/900	215T	140448.00	✓	2,689	C215T48FB48	168	460	12.7-4.2	1.0	18.71	S, MX

C/A - Check Availability

♥ Note listing on inside back flap

Specifications are subject to change without notice

Variable Torque - 208-230 Volt - Three Phase - TEFC - Rigid Base

HP	RPM 60 Hz	NEMA Frame	Catalog Number	Stock	List Price	Model Number	App. Wgt. (lbs)	Voltage	F. L. Amps @ 230 V	Service Factor	"C" Dim. (Inches)	♥Notes
1/25	1800/900	143T	120944.00	C/A	977	C143T48FB6	36	208-230	3.2-1.4	1.0	12.75	S, US
1.5/37	1800/900	145T	120947.00	C/A	1,019	C145T48FB61	36	208-230	4.8-2.0	1.0	12.75	S, US
2/5	1800/900	145T	120946.00	✓	1,185	C145T48FB59	35	208-230	6.3-2.6	1.0	12.75	S, US
3/7.5	1800/900	184T	131468.00	✓	1,269	C184T48FB61	78	208-230	8.0-3.6	1.0	14.46	S, MX
5/1.2	1800/900	184T	131469.00	✓	1,620	C184T48FB62	94	208-230	13.0-5.0	1.0	15.96	S, MX
7.5/1.9	1800/900	215T	140443.00	C/A	2,305	C215T48FB45	154	208-230	19.4-6.6	1.0	17.71	S, MX
10/2.5	1800/900	215T	140444.00	C/A	2,689	C215T48FB47	166	208-230	25.4-8.4	1.0	18.71	S, MX

C/A - Check Availability

♥ Note listing on inside back flap

Specifications are subject to change without notice

Continued To Next Page

View On-line Technical Information



Explosion Proof
Motors

Automotive
Duty Motors

Pump
Motors

Washguard
Motors

Agricultural
Motors

HVAC / Fan
Motors

Special Voltage
Motors

Definite
Purpose Motors

Brake Motors

HVAC – Fan Motors

Fan & Blower Motors - Multi-Speed - Three Phase

Constant Torque - 460 Volt - Three Phase - One Winding - TEFC - Rigid Base

HP	RPM 60 Hz	NEMA Frame	Catalog Number	Stock	List Price	Model Number	App. Wgt. (lbs)	Voltage	F. L. Amps @ 460 V	Service Factor	"C" Dim. (Inches)	♥Notes
1/5	1800/900	143T	120943.00	C/A	1,393	C143T48FB9	36	460	1.4–1.6	1.0	13.25	S, US
2/1	1800/900	184T	131471.00	√	1,780	C184T48FB64	68	460	2.9–2.9	1.0	13.96	S, MX
3/1.5	1800/900	184T	131470.00	√	2,020	C184T48FB63	80	460	3.8–3.5	1.0	14.96	S, MX
5/2.5	1800/900	215T	140445.00	C/A	2,640	C215T48FB43	145	460	6.7–7.0	1.0	17.71	S, MX

C/A - Check Availability

♥ Note listing on inside back flap

Specifications are subject to change without notice

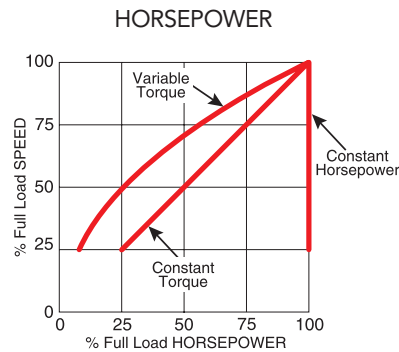
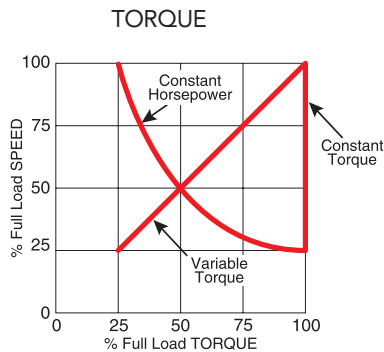
Constant Torque - 208-230 Volt - Three Phase - One Winding - TEFC - Rigid Base

HP	RPM 60 Hz	NEMA Frame	Catalog Number	Stock	List Price	Model Number	App. Wgt. (lbs)	Voltage	F. L. Amps @ 230 V	Service Factor	"C" Dim. (Inches)	♥Notes
1/5	1800/900	143T	120942.00	C/A	1,393	C143T48FB8	37	208-230	3.2–4.2	1.0	12.75	S, US
2/1	1800/900	184T	131473.00	C/A	1,780	C184T48FB66	69	208-230	5.8–5.7	1.0	13.96	S, MX
3/1.5	1800/900	184T	131472.00	√	2,020	C184T48FB65	80	208-230	7.6–6.9	1.0	14.96	S, MX
5/2.5	1800/900	215T	140446.00	C/A	2,640	C215T48FB44	137	208-230	13.4–14.0	1.00	17.71	S, MX

C/A - Check Availability

♥ Note listing on inside back flap

Specifications are subject to change without notice



View On-line Technical Information



Agricultural Duty - Fan & Blower Motors Two-Winding Variable Torque - PSC Type

These fan and blower duty motors are designed for dependable, energy saving performance in applications where the fan is mounted on the shaft of the motor.



Features:

- Two-winding - variable torque
- PSC Type for shaft mounted fan applications
- Overload protected with a UL and CSA recognized automatic reset protector
- Listed speed or two speed operation using the proper auxiliary switch
- Variable speed by using a variable voltage control
- Overload protected with a UL and CSA recognized automatic reset protector
- Must be mounted in airstream for proper motor cooling
- Extended thru-bolts

Single Phase - PSC - TEAO - Resilient Base

HP	RPM 60 Hz	NEMA Frame	Catalog Number	Stock	List Price	Model Number	App. Wgt. (lbs)	Voltage	Over- load Prot.	F. L. Amps @ 230 V	Service Factor	"C" Dim. (Inches)	♥Notes
1/4	1625	48Z	100803.00	✓	370	A4P17NR1	19	115/230	Auto.	1.4	1.00	10.66	S, MX, 16, 34
	1075	48Z	100824.00	✓	419	A4P11NR2	20	115/230	Auto.	1.4	1.00	10.66	S, MX, 16, 34
	1075	S56Z	100805.00	✓	464	A4P11NJ1	22	115/230	Auto.	1.4	1.00	11.06	S, MX, 17, 28
1/3	1625	48Z	100804.00	✓	385	A4P17NR2	21	115/230	Auto.	1.6	1.00	10.66	S, MX, 16, 34
	1625	S56H	100767.00	✓	444	A4P17NJ1	22	115/230	Auto.	1.6	1.00	10.31	S, MX, 34, 59
	1625	56HY	111348.00	✓	485	A6P17NZ6	24	115/230	Auto.	1.7	1.00	13.44	S, US, 34
	1075	48Z	100825.00	✓	455	A4P11NR3	25	115/230	Auto.	1.8	1.00	11.16	S, MX, 16, 34
	1075	S56HZ	100806.00	✓	488	A4P11NJ2	27	115/230	Auto.	1.8	1.00	11.56	S, MX, 17, 28
1/2	1625	56HZ	111323.00	✓	554	A6P17NR3	30	115/230	Auto.	2.6	1.00	12.56	S, US, 17, 34
	1625	S56H	100768.00	✓	457	A4P17NJ2	36	115/230	Auto.	2.2	1.00	10.81	S, MX, 17
	1075	48Z	101645.00	✓	491	A4P11NR6	33	115/230	Auto.	2.8	1.00	11.16	S, MX, 16, 34
	1075	56HZ	111321.00	✓	575	A6P11NR1	37	115/230	Auto.	3.0	1.00	13.56	S, US, 17, 34
	825	48YZ	A099836.00	✓	495	A4P8NR2	24	115/230	Auto.	3.2	1.00	11.55	S, MX, 19, 34, 50
	825	56HZ	111919.00	✓	645	A6P8NR2	40	115/230	Auto.	3.2	1.15	13.56	S, US, 17, 34, 50
3/4	1625	56HZ	111324.00	✓	606	A6P17NR4	34	115/230	Auto.	3.5	1.00	13.06	S, US, 17, 34
	1625	56H	111266.00	✓	606	A6P17NR1	36	115/230	Auto.	3.5	1.00	12.31	S, US, 34
	1075	56HZ	111322.00	✓	652	A6P11NR2	44	115/230	Auto.	4.0	1.00	13.56	S, US, 17, 34, 50
1	1625	56HZ	111267.00	✓	678	A6P17NR2	39	115/230	Auto.	4.4	1.00	12.81	S, US, 34

Specifications are subject to change without notice

♥ Note listing on inside back flap

View On-line Technical Information



Explosion Proof
Motors

Automotive
Duty Motors

Pump
Motors

Washguard
Motors

Agricultural
Motors

HVAC / Fan
Motors

Special Voltage
Motors

Definite
Purpose Motors

Brake Motors

Explosion Proof Motors
Automotive Duty Motors
Pump Motors
Washguard Motors
Agricultural Duty Motors
HVAC / Fan Motors
Special Voltage Motors
Definite Purpose Motors
Brake Motors

HVAC – Fan Motors

PSC - Variable Speed - Resilient Base - Single Phase

Features:

- Agricultural fan duty
- Extended thru-bolts
- Totally enclosed air over (TEAO) designs



Single Phase - TEAO - Resilient Base - PSC Type

HP	RPM 60 Hz	NEMA Frame	▼ Catalog Number	Stock	List Price	Model Number	App. Wgt. (lbs)	Voltage	Over-load Prot.	F. L. Amps @ 230 V	Service Factor	"C" Dim. (Inches)	♥ Notes
1/4	1625	48Z	LM24445	✓	593	SPA4S0.25TZRY1A6027AP11-1	20	115/230	Auto.	1.8	1.00	11.06	S, MX, 16
	1625	48Z	LM24447	C/A	459	SPA4S0.25TZRY1A6027AP10-1	17	115/230	Auto.	1.6	1.00	10.09	S, MX, 16
1/3	1625	48Z	LM24450	✓	651	SPA4S0.33TZRY1A6027AP11-1	23	115/230	Auto.	1.9	1.00	11.81	S, MX, 16
	1625	48Z	LM24448	✓	505	SPA4S0.33TZRY1A6027AP10-1	17	115/230	Auto.	2.2	1.00	10.09	S, MX, 16
	1075	48Z	LM24443	✓	629	SPA6S0.33TZRY1A6027AP10-1	15	115/230	Auto.	2.1	1.00	10.84	S, MX, 16
1/2	1625	48Z	LM24446	✓	722	SPA4S0.5TZRY1A6027AP11-1	23	115/230	Auto.	2.7	1.00	11.81	S, MX, 16
	1625	48Z	LM24449	✓	559	SPA4S0.5TZRY1A6027AP10-1	21	115/230	Auto.	3.0	1.00	10.84	S, MX, 16
	1075	48Z	LM24444	✓	722	SPA6S0.5TZRY1A6027AP10-1	19	115/230	Auto.	3.2	1.00	10.84	S, MX, 16

▼ LM Numbers are Lincoln Models

♥ Note listing on inside back flap

C/A - Check Availability

Specifications are subject to change without notice



Single Phase - TEAO - Rigid Base - PSC Type

HP	RPM 60 Hz	NEMA Frame	Catalog Number	Stock	List Price	Model Number	App. Wgt. (lbs)	Voltage	Over-load Prot.	F. L. Amps @ 230 V	Service Factor	"C" Dim. (Inches)	♥ Notes
1/4	1750	48Y	101252.00	✓	353	A4P17NB27	19	115/208-230	Auto.	1.5	1.00	10.90	S, MX, 50
	1625	48Y	100699.00	✓	353	A4P17NB7	19	115/230	Auto.	1.4	1.00	10.65	S, MX
	1650	48Y	M099799.00	D	353	A4P17NB55	19	115/230	Auto.	1.5	1.00	10.79	S, CN
	1075	48Y	M099260.00	D	368	A4P11NB23	21	115/230	Auto.	1.2	1.00	10.83	S, CN
	1075	48Y	A099260.00	✓	368	A4P11NB52	21	115/230	Auto.	1.5	1.00	10.65	S, MX
1/3	1725	48Y	M090253.00	D	364	A4P17NB54	22	115/230	Auto.	1.8	1.00	10.47	S, CN, 50
	1750	48Y	101253.00	✓	400	A4P17NB28	22	115/208-230	Auto.	1.9	1.00	10.65	S, MX, 50
	1625	48Y	100700.00	✓	400	A4P17NB8	22	115/230	Auto.	1.6	1.00	10.65	S, MX
	1625	48Y	M099800.00	D	462	A4P17NB56	22	115/230	Auto.	1.8	1.00	10.79	S, CN
	1625	56Y	111202.00	C/A	400	A6P17NZ1	24	115/230	Auto.	1.7	1.00	12.00	S, US, 58
	1140	S56Y	100604.00	✓	434	A4P11NH1	23	115/230	Auto.	1.8	1.00	11.40	S, MX
	1075	48Y	M099261.00	D	434	A4P11NB24	21	115/230	Auto.	1.5	1.00	11.34	S, CN
1/2	1075	48Y	A099261.00	✓	467	A4P11NB53	21	115/230	Auto.	1.8	1.00	10.90	S, MX
	1750	S56Y	101176.00	✓	440	A4K17NH2	26	115/230	Auto.	3.5	1.00	10.40	S, MX, 50, 54
	1750	48Y	100701.00	✓	430	A4P17NB9	29	115/230	Auto.	2.5	1.00	12.15	S, MX
	1625	48Y	M099801.00	D	430	A4P17NB57	29	115/230	Auto.	2.5	1.00	10.79	S, CN
	1060	48Y	M099946.00	D	450	A4P11NB28	26	115/230	Auto.	2.5	1.00	11.81	S, CN
3/4	1075	48Y	A099946.00	✓	450	A4P11NB54	26	115/230	Auto.	2.5	1.00	11.90	S, MX
	1075	48Y	M099847.00	D	642	A6P11NB4	36	115/230	Auto.	3.6	1.00	13.56	S, CN
	1075	56HZ	A099847.00	✓	642	A6P11NB5	35	115/230	Auto.	3.7	1.00	13.56	S, MX

C/A - Check Availability

♥ Note listing on inside back flap

D - Item to be discontinued once inventory is depleted

Specifications are subject to change without notice

View On-line Technical Information



HVAC - Fan Motors

Grain Dryer / Centrifugal Fan Motors

Used in Ag fan and blower applications. Screens used to protect against entry of pests and and silage.

Features:

- NEMA Premium and EPEfficiency efficiency
- Rodent screens
- Re-greasable bearings
- Cast Iron construction
- 1.25 service factor
- Class F insulation
- Inverter duty insulation system
- UL recognized and CSA certified



Three Phase - Open Drip Proof - Rigid Base

HP	RPM 60 Hz	NEMA Frame	Catalog Number	Stock	List Price	Model Number	App. Wgt. (lbs)	Voltage	F. L. Amps @ 230 V	F.L. Eff.	"C" Dim. (Inches)	♥Notes
10	1800	215T	G151828.60	√	1,117	C215T17DB54	168	208-230/460	25.0	89.5	16.75	C, CN
15	1800	254T	G151540.60	√	1,644	C254T17DB12	265	208-230/460	37.6	91.0	21.89	C, CN
	1800	254T	170540.60	√	2,132	C254T17DB45	279	208-230/460	37.0	93.0	20.94	C, CN
20	1800	256T	G151541.60	√	2,045	C256T17DB7	307	208-230/460	48.0	91.7	23.54	C, CN
	1800	256T	170541.60	√	2,600	C256T17DB10	324	208-230/460	51.0	93.0	22.60	C, CN
25	1800	284T	G151829.60	C/A	2,236	C284T17DB11	388	208-230/460	59.6	91.7	23.54	C, CN
30	1800	286T	G151542.60	√	2,848	C286T17DB12	434	208-230/460	72.0	92.4	26.57	C, CN
	1800	286T	170542.60	√	3,501	C286T17DB13	471	208-230/460	71.0	93.6	25.00	C, CN

Green items are Premium Efficient

C/A - Check Availability

Specifications are subject to change without notice

♥ Note listing on inside back flap

View On-line Technical Information



Explosion Proof
Motors

Automotive
Duty Motors

Pump
Motors

Washguard
Motors

Agricultural
Motors

HVAC / Fan
Motors

Special Voltage
Motors

Definite
Purpose Motors

Brake Motors

HVAC – Fan Motors

Crop Dryer Motors

Features:

- Open air over, fan-on-shaft design
- Continuous duty
- Thermostats provide overload protection
- Extra nameplate provided for remote mount
- Keyed shaft with 1/4-20 UNC tapped hole in end
- Grey epoxy painted
- Rodent screen protection



Single Phase - Rigid Base - Open Air Over

HP	RPM 60 Hz	NEMA Frame	▼ Catalog Number	Stock	List Price	Model Number	App. Wgt. (lbs)	Voltage	Over- load Prot.	F. L. Amps @ 230 V	Service Factor	"C" Dim. (Inches)	♥Notes
3-4.5	3600	145TZ	LM24778	√	1,231	SSD2S3-4.5TZ1B66QS10-1	46	230	Auto	13.0	1.50	13.74	S, MX
5-7	3600	182TZ	131847.00	√	1,446	C182C34DB2	91	230	T-Stat	27.2-35.0	1.00	16.44	S, MX
7.5-10	3600	182TZ	131848.00	√	1,607	C182K34DB4	95	230	T-Stat	31.0-42.0	1.00	16.44	S, MX
7-10	3600	184TZ	LM24780	√	2,015	SSD2S7-10TZ1B66QS11-1	102	230	T-Stat	31.0-42.0	1.40	15.94	S, MX
10-15	3600	215TZ	140640.00	√	2,471	C215K34DB2	159	230	T-Stat	39.5-61.5	1.00	20.42	S, MX
	3600	215TZ	LM24782	√	2,559	SS215D2S10-15TZ1C66QS11-1	135	230	T-Stat	39.5-61.5	1.50	18.16	S, MX
	3600	215TZ	141084.00	√	2,471	C215K34DB3	159	230	T-Stat	40.0	1.00	20.08	S, MX, 52

▼ LM Numbers are Lincoln Models

♥ Note listing on inside back flap

Note 52 - Extra High Starting Torque

Specifications are subject to change without notice

Three Phase - Rigid Base - Open Air Over

HP	RPM 60 Hz	NEMA Frame	▼ Catalog Number	Stock	List Price	Model Number	App. Wgt. (lbs)	Voltage	Over- load Prot.	F. L. Amps @ 230 V	Service Factor	"C" Dim. (Inches)	♥Notes
5-7.5	3600	184TZ	131849.00	√	1,171	C184T34DB8	70	208-230/460	T-Stat	19.0	1.00	13.94	S, MX
7.5-10	3600	184TZ	131850.00	√	1,367	C184T34DB9	85	208-230/460	T-Stat	24.2	1.00	15.44	S, MX
10-15	3600	215TZ	140641.00	√	1,649	C215T34DB3	95	208-220/440	T-Stat	40.0	1.50	17.41	S, MX

Specifications are subject to change without notice

♥ Note listing on inside back flap



View On-line Technical Information

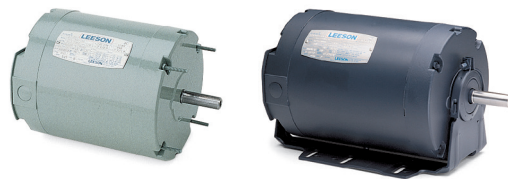


HVAC - Fan Motors

Hatchery and Incubator Fan Motors

Features:

- Automatic overload protected
- 15MFD, 370V capacitor shipped loose with motor
- 101341.00 is a permanent split capacitor motor
- Motor 114102.00 is a split phase two-speed motor
- Double shielded ball bearings



Single Phase - TEAO

HP	RPM 60 Hz	NEMA Frame	Catalog Number	Stock	List Price	Model Number	App. Wgt. (lbs)	Voltage	Over- load Prot.	F. L. Amps @ 230 V	Service Factor	"C" Dim. (Inches)	♥Notes
1/4	1625	48Y	101341.00	√	454	A4P17NZ24	17	115/230	Auto.	2.8	1.00	8.93	S, US, 16, 34, 58
1/3	1800	48Z	103878.00	√	490	L4P17NZ149	20	115/230	Auto.	1.65	1.00	9.93	S, MX, 16, 34
1/2-0.22	1725	56H	114102.00	√	592	A6S46NR4	33	115	Auto.	9.3-5.6*	1.25	11.81	S, US

* Full Load amps are at high speed and low speeds, respectively at 115 volts
Specifications are subject to change without notice

♥ Note listing on inside back flap

Variable Speed - High Performance AG Fan Motors

Features:

- Water-tight connection end compartment
- Locked double sealed ball bearings
- All angle mounting
- Shaft seal on output shaft end
- Automatic overload protection



Single Phase - PSC Type - TEAO - Rigid Base - Extended Thru-Bolts

HP	RPM 60 Hz	NEMA Frame	Catalog Number	Stock	List Price	Model Number	App. Wgt. (lbs)	Voltage	Over- load Prot.	F. L. Amps @ 230 V	Service Factor	"C" Dim. (Inches)	♥Notes
1/4	1625	48Y	M099899.00	D	349	A4P17NB58	18	115-208/230	Auto.	1.3	1.00	11.30	S, CN
			A099899.00	√	349	A4P17NZ139	19	115-208/230	Auto.	1.4	1.00	10.64	S, MX
			A099460.00	√	377	A4P11NB5	23	115-208/230	Auto.	1.5	1.0	11.14	S, MX
1/3	1625	48Y	A099900.00	√	372	A4P17NZ141	20	115-208/230	Auto.	1.6	1.00	10.89	S, MX
			M099461.00	D	403	A48P11NB26	22	115-208/230	Auto.	1.9	1.00	11.80	S, CN
			A099461.00	√	403	A4P17NZ86	23	115-208/230	Auto.	1.8	1.00	11.14	S, MX
1/2	1625	48Y	A099901.00	√	413	A4P17NZ142	23	115-208/230	Auto.	2.7	1.00	11.39	S, MX
			M099462.00	D	440	A4P11NB27	25	115-208/230	Auto.	2.8	1.00	12.20	S, CN
			A099462.00	√	440	A4P11NZ85	26	115-208/230	Auto.	2.8	1.00	11.39	S, MX

D = To be obsoleted once inventory has been depleted
Specifications are subject to change without notice

♥ Note listing on inside back flap

View On-line Technical Information



Explosion Proof
Motors

Automotive
Duty Motors

Pump
Motors

Washguard
Motors

Agricultural
Motors

HVAC / Fan
Motors

Special Voltage
Motors

Definite
Purpose Motors

Brake Motors

HVAC – Fan Motors

Agricultural Fan Motors - Belt Drive - TEAO

Features:

- Capacitor start / capacitor run designs for high efficiency
- Mount in airstream for proper cooling
- Combination 56 / 140 frame stamped steel base



High Efficiency - Single Phase

HP	RPM 60 Hz	NEMA Frame	Catalog Number	Stock	List Price	Model Number	App. Wgt. (lbs)	Voltage	Over- load Prot.	F. L. Amps @ 230 V	F.L. Eff.	"C" Dim. (Inches)	♥Notes
1/2	1725	56	M009580.00	D	505	A6K17NB21	27	115/208-230	–	2.2	1.00	10.33	S, CN
	1725	56	A009580.00	√	505	A6K17NB30	27	115/208-230	–	2.3	1.15	11.44	S, MX
3/4	1725	56H	A009581.00	√	535	A6K17NB29	30	115/208-230	Auto.	3.3	1.00	11.44	S, MX
	1	1725	56H	A009782.00	√	557	A6K17NB33	37	115/208-230	Auto.	4.0	1.00	11.44
1 1/2	1725	56H	M009594.00	D	664	A6K17NB16	39	115/208-230	Auto.	6.8	1.00	12.60	S, CN
	1725	56H	A009594.00	√	664	A6K17NB32	39	115/208-230	Auto.	5.8	1.00	11.94	S, MX
2	1725	145T	M009595.00	D	737	M145K17NB	47	230	Auto	9.5	1.00	12.80	S, CN, *
	1725	145T	A009595.00	√	737	U145K17NB	47	230	Auto.	9.2	1.00	13.49	S, MX

Note * = Motor M009595.00 has a frame mounted conduit box

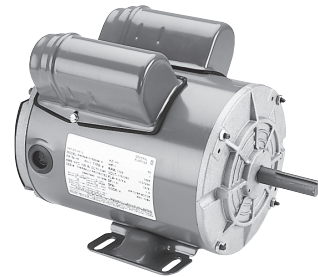
D = Item to be obsoleted once inventory has been depleted

Specifications are subject to change without notice

♥ Note listing on inside back flap

Agriculture Fan

115/230 Volts - Belt Drive - Overload Protection



LM24777 is TEAO Design - Single Phase - TENV - Rigid Base

HP	RPM 60 Hz	NEMA Frame	▼ Catalog Number	Stock	List Price	Model Number	App. Wgt. (lbs)	Voltage	Over- load Prot.	F. L. Amps @ 230 V	Service Factor	"C" Dim. (Inches)	♥Notes
1/2	1725	56Z	LM24776	√	711	SRN4S0.5TZ1B6027TP2-1	21	115/230	Auto	2.3	1.00	10.47	S, MX, 12, 53
1	1725	56Z	LM24777	√	951	SRA4S1TZ1B6027TP2-1	32	115/230	Auto	4.6	1.00	10.72	S, MX, 53

▼ LM Numbers are Lincoln Models

Specifications are subject to change without notice

♥ Note listing on inside back flap



View On-line Technical Information



HVAC - Fan Motors

Agriculture Fan

Direct Drive Thru-Bolt Mount



Features:

- 1/2" long thru-bolts
- 48Y - 1/2" dia., 1-1/2 long shaft with flat
- 48YZ - 1/2" dia., 2-1/2" long shaft with two flats

Single Speed - Single Phase - TEAO - Thru-Bolt Mount

HP	RPM 60 Hz	NEMA Frame	▼ Catalog Number	Stock	List Price	Model Number	App. Wgt. (lbs)	Voltage	Over- load Prot.	F. L. Amps @ 115 V	Service Factor	"C" Dim. (Inches)	♥Notes
1/4	1725	48Y	LM24488	√	432	SPN4S0.25TZNY1S6001TP1-1	10	115	Auto	4.0	1.00	7.62	S, MX

▼ LM Numbers are Lincoln Models

♥ Note listing on inside back flap

Specifications are subject to change without notice

Two Speed - Single Phase - TEAO - Thru-Bolt Mount

HP	RPM 60 Hz	NEMA Frame	▼ Catalog Number	Stock	List Price	Model Number	App. Wgt. (lbs)	Voltage	Over- load Prot.	F. L. Amps @ 115 V	Service Factor	"C" Dim. (Inches)	♥Notes
1/4	1725	48YZ	LM24492	√	451	SPA4/6/1S0.25/0.25TZNY1S 6001TP2-1	17	115	Auto	4.1	1.00	11.09	S, MX
1/3	1725	48YZ	LM24491	√	507	SPA4/6/1S0.33/0.33TZNY1S 6001TP2-1	18	115	Auto	5.3	1.00	11.34	S, MX

▼ LM Numbers are Lincoln Models

♥ Note listing on inside back flap

Specifications are subject to change without notice

View On-line Technical Information



Explosion Proof
Motors

Automotive
Duty Motors

Pump
Motors

Washguard
Motors

Agricultural
Motors

HVAC / Fan
Motors

Special Voltage
Motors

Definite
Purpose Motors

Brake Motors

HVAC – Fan Motors

Agriculture Fan

Features:

- Single phase - 115 & 230 Volts
- Extended thru-bolts on 48Z frame motors
- 48Z - 1/2 dia. shaft, 2-1/2 long with two flats
- 56Z - 1/2 dia. shaft, 2-1/2" long shaft with keyway
- Includes 5/8" shaft adaptor sleeve with key



Single Phase - PSC Type - TEAO - Resilient Base

HP	RPM 60 Hz	NEMA Frame	▼ Catalog Number	Stock	List Price	Model Number	App. Wgt. (lbs)	Voltage	Over- load Prot.	F. L. Amps @ 230 V	Service Factor	"C" Dim. (Inches)	♥Notes
1/4	1725	48Z	LM24487	C/A	451	SPA4S0.25TZRY1S6001TP2-1	17	115	Auto	3.5	1.00	10.09	S, MX
1/3	1725	48Z	LM24486	√	507	SPA4S0.33TZRY1S6001TP2-1	21	115	Auto	4.5	1.00	10.09	S, MX
1/2	1725	56Z	LM24809	C/A	685	SRA4S0.5TZR1S6027TP2-1	24	115/230	Auto	6.6	1.00	11.34	S, MX

▼ LM Numbers are Lincoln Models

♥ Note listing on inside back flap

C/A - Check Availability

Specifications are subject to change without notice

Aeration Fan, HVAC 115 & 230 Volts - Single Phase

Features:

- Automatic overload protected
- Sealed bearings
- 18" extended leads
- Shaft has keyway and 1/4-20 UNC tapped hole on end of shaft

Single Phase - TEAO - Rigid Base

HP	RPM 60 Hz	NEMA Frame	▼ Catalog Number	Stock	List Price	Model Number	App. Wgt. (lbs)	Voltage	Over- load Prot.	F. L. Amps @ 230 V	Service Factor	"C" Dim. (Inches)	♥Notes
1	3600	56Z	LM24786	√	550	SRA2S1TZ1C6027L10MB6TP2-1	29	115/230	Auto	5.6	1.15	10.94	S, MX
1 1/2	3600	143TZ	LM24787	√	624	SSA2S1.5TZ1C6027L10MB6TP2-1	35	115/230	Auto	8.4	1.15	11.49	S, MX
3	3600	145TZ	LM24788	√	769	SS145A2S3TZ1B66L10MB6TP2-1	52	230	Auto	11.8	1.15	13.49	S, MX

▼ LM Numbers are Lincoln Models

♥ Note listing on inside back flap

Specifications are subject to change without notice



View On-line Technical Information





Applications:

Cooling towers, Fan and Blowers, and other severe duty environments where long life and high efficiency are desired.

Features:

- Complete cast iron construction for rigidity and reduced vibration
- Epoxy painted
- Severe duty treatment of internal parts
- Class F insulation
- F-1 / F-2 Capable
- Re-greaseable bearings
- Brass T-drain installed - both ends at 6:00
- Inpro Shaft seal protected
- Shaft grounding ring (SGRs) installed
- Inverter rated IRIS™ insulation system
- 10 : 1 constant and variable torque rated
- Extra nameplate with CE for external mounting
- Designed for shaft up mounting
- Two year warranty
- 1.15 S.F. under sine wave power

Three Phase - TEAO - Rigid Base

HP	RPM 60 Hz	NEMA Frame	▼ Catalog Number	Stock	List Price	Model Number	App. Wgt. (lbs)	Voltage	F. L. Amps @ 230 V	% F. L. Eff.	"C" Dim. (Inches)	♥ Notes
3	1800	182T	824528.00	✓	1,296	182TTN16569	123	230/460	8.0	90.2	13.82	C, US
5	1800	184T	824529.00	✓	1,416	184TTN16542	155	230/460	12.4	90.2	15.82	C, US
7.5	1800	213T	824530.00	✓	1,787	213TTN16536	225	230/460	19.2	91.7	17.47	C, US
10	1800	215T	824531.00	✓	2,047	215TTN16537	300	230/460	25.0	91.7	20.47	C, US
15	1800	254T	824532.00	✓	2,640	254TTNA14533	240	230/460	39.0	91.0	20.95	C, US
20	1800	256T	824533.00	✓	3,105	256TTNA14533	400	230/460	50.0	91.0	22.70	C, US
25	1800	284T	824534.00	✓	3,692	284TTNA14536	500	230/460	63.0	92.4	26.97	C, US
30	1800	286T	824535.00	✓	4,305	286TTTPA14531	400	230/460	74.0	92.4	26.19	C, US
40	1800	324T	824536.00	✓	5,581	324TTTPA14532	550	230/460	100.0	93.0	28.10	C, US
50	1800	326T	824537.00	✓	7,029	326TTTPA14532	600	230/460	122.0	93.0	29.60	C, US
60	1800	364T	824538.00	✓	9,837	364TTTS14531	850	230/460	144.0	93.6	28.88	C, US
75	1800	365T	824539.00	✓	12,246	365TTTS14533	1000	230/460	178.0	94.1	29.88	C, US
100	1800	405T	824540.00	✓	15,164	405TTTS14531	1250	230/460	228.0	94.5	34.25	C, US
125	1800	444T	824541.00	✓	19,522	444TTN14531	1990	460	143*	94.5	40.03	C, US
150	1800	445T	824542.00	✓	23,246	445TTN14532	2343	460	172*	95.0	40.03	C, US
200	1800	445T	824543.00	✓	27,746	445TTN14533	2556	460	225*	95.0	40.03	C, US
250	1800	449T	824544.00	✓	26,812	449TTTS14531	2409	460	290*	95.0	48.41	C, US

* - Amps at 460 Volts

♥ Note listing on inside back flap

Specifications are subject to change without notice

View On-line Technical Information



Explosion Proof
Motors

Automotive
Duty Motors

Pump
Motors

Washguard
Motors

Agricultural
Motors

HVAC / Fan
Motors

Special Voltage
Motors

Definite
Purpose Motors

Brake Motors

Custom Multi-Speed Low-Speed and Modified Motor Program

Custom **PDQ**



PDQ Modular Production Program

Custom Multi-Speed, Low Speed and Modified Motors, one or several at a time, on a quick turnaround basis.

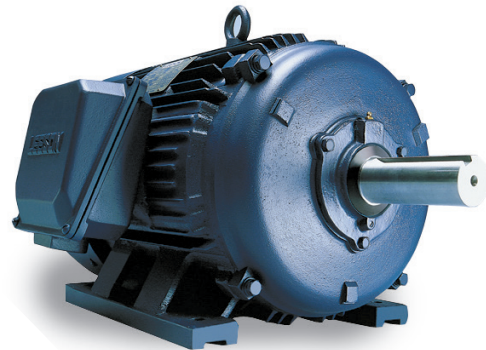
LEESON's "Modular Production" utilizes specially designed and standard components to make almost any imaginable NEMA frame multi-speed or low-speed motor available when you need it.

Quick Turnaround-LEESON's Custom PDQ can provide quick answers to inquiries and fast turnaround for orders of highly customized motors.

Comprehensive Catalog - Features the Industry's most extensive two-speed and low speed motor selection as well as a listing of commonly requested modifications. Call for your copy of LEESON Catalog 1057 - Multi-Speed, Low-Speed and Modified Motors.

Full Fact Acknowledgement - With Custom PDQ all custom motors are promptly and fully acknowledged upon receipt of order. The acknowledgement includes the complete motor specification pricing and shipping date.

Motors of 254T frame and larger are of cast iron construction with all the rugged features of LEESON's stock single-speed motors described on pages 42 & 43 of this catalog. All two-speed designs are class F insulated and have a 1.15 S.F.



Whether for the everyday or not-so-everyday needs, Custom PDQ gives you the ability to say "Yes" to requests for customized motors.

Multi-speed

Two, three and four-speed motors

Low Speed

900, 720, 600, 450 and 300 rpm

Modified as per Catalog 1057 - Some examples are:

- Anti-condensation heaters
- Brakemotors, custom
- Cooling tower specifications
- Downsized frames
- Epoxy and fungus proofing
- 50 Hz
- Premium-efficiency, North American manufacture
- Insulation, special
- Marine duty (below deck)
- Part winding (low and high voltages)
- Shafts, modified
- Thermostats
- Thermistors
- Washdown service
- IEEE841 conversion of WATTSaver® motors
- Voltages (non-standard)

...and many more

For quotations, availability, and application assistance phone toll-free to our Canadian manufacturing facility.

CUSTOM PDQ
1-800-463-1797



CUSTOMIZED AND MODIFIED PRODUCTS

CUSTOM MOTORS, GEARBOXES & GEARMOTORS

LEESON is a leading designer and manufacturer of application-specific AC and DC motors and gearmotors in sub-fractional, fractional and integral horsepower sizes. We offer a database of over 30,000 custom designs, experienced application and design engineering teams, to ensure the best, most cost-effective custom motor solution.

CUSTOM MULTI-SPEED & LOW-SPEED MOTORS

LEESON's PDQ Modular Production Program utilizes specially designed and standard components to make almost any imaginable NEMA frame multi-speed or low-speed motor available when you need it. We pride ourselves on fast turnaround times on highly customized motors.

Custom motors include two, three and four-speed motors and speed ranges of 900, 720, 600, 450 and 300 RPMs. We also specialize in non-standard shaft designs.

For quotations, availability and application assistance, phone toll-free to our Canadian manufacturing facility at 1-800-463-1797.



Explosion Proof
Motors

Automotive
Duty Motors

Pump
Motors

Washguard
Motors

Agricultural
Motors

HVAC / Fan
Motors

Special Voltage
Motors

Definite
Purpose Motors

Brake Motors