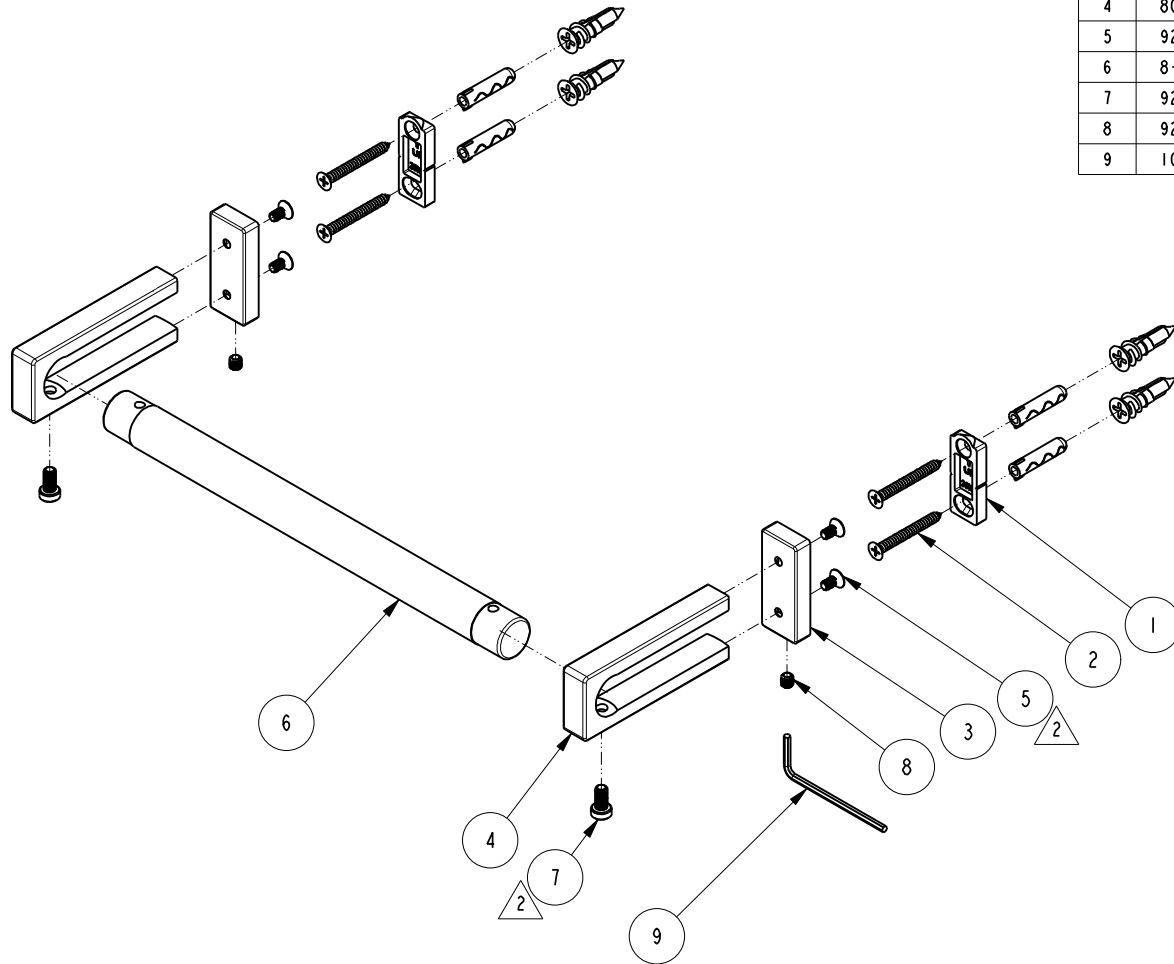


NOTES:

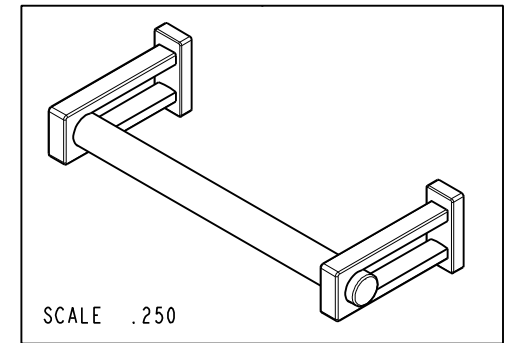
1. TO INSPECT ASSEMBLY, FOLLOW FIRST ARTICLE AND IN PROCESS INSPECTION SHEET.

2 APPLY LOCTITE 680 TO THREADS



BILL OF MATERIAL (CURRENT LEVEL)

| ITEM | PT/ASSY | DESCRIPTION | TYPE | QTY. |
|------|---------|--|----------|------|
| 1 | 30XX | MOUNTING BRACKET - SHORT | PART | 2 |
| 2 | 1-206 | HARDWARE PACK | ASSEMBLY | 2 |
| 3 | 80775 | BACKPLATE | PART | 2 |
| 4 | 80445 | TOWEL BAR AND TOILET TISSUE HOLDER POST | PART | 2 |
| 5 | 92938 | SCRW, M4 X .7 X 8 SKT FLT HD SS | PART | 4 |
| 6 | 8-164 | 8" BAR | ASSEMBLY | 1 |
| 7 | 92939 | SCRW, M5 X .8 X 10 SKT LOW PROFILE CAP HD SS | PART | 2 |
| 8 | 92308 | SCRW, M5 X 5 SKT HD CUP PT W/ SELF LOC SS | PART | 2 |
| 9 | 10888 | HEX KEY, 2.5MM ALLOY STEEL | PART | 1 |



COPYRIGHT 2005 BRASSTECH, INC. THESE DRAWINGS AND THE DESIGNS DEPICTED HEREIN ARE THE PROPRIETARY PROPERTY OF BRASSTECH. ANY USE OR REPRODUCTION IS SUBJECT TO THE EXPRESS APPROVAL OF BRASSTECH. UNAUTHORIZED USE IS STRICTLY PROHIBITED. ALL RIGHTS RESERVED.

| | | | |
|-------------------|----------------------------------|-------------|---------|
| TESTING | - | - | - |
| ASSEMBLY | - | - | - |
| PLATING | - | - | - |
| POLISHING | - | NEXT ASSY | USED ON |
| MACHINING | - | APPLICATION | |
| TOOLING FIXTURE # | REMOVE ALL BURRS AND SHARP EDGES | | |

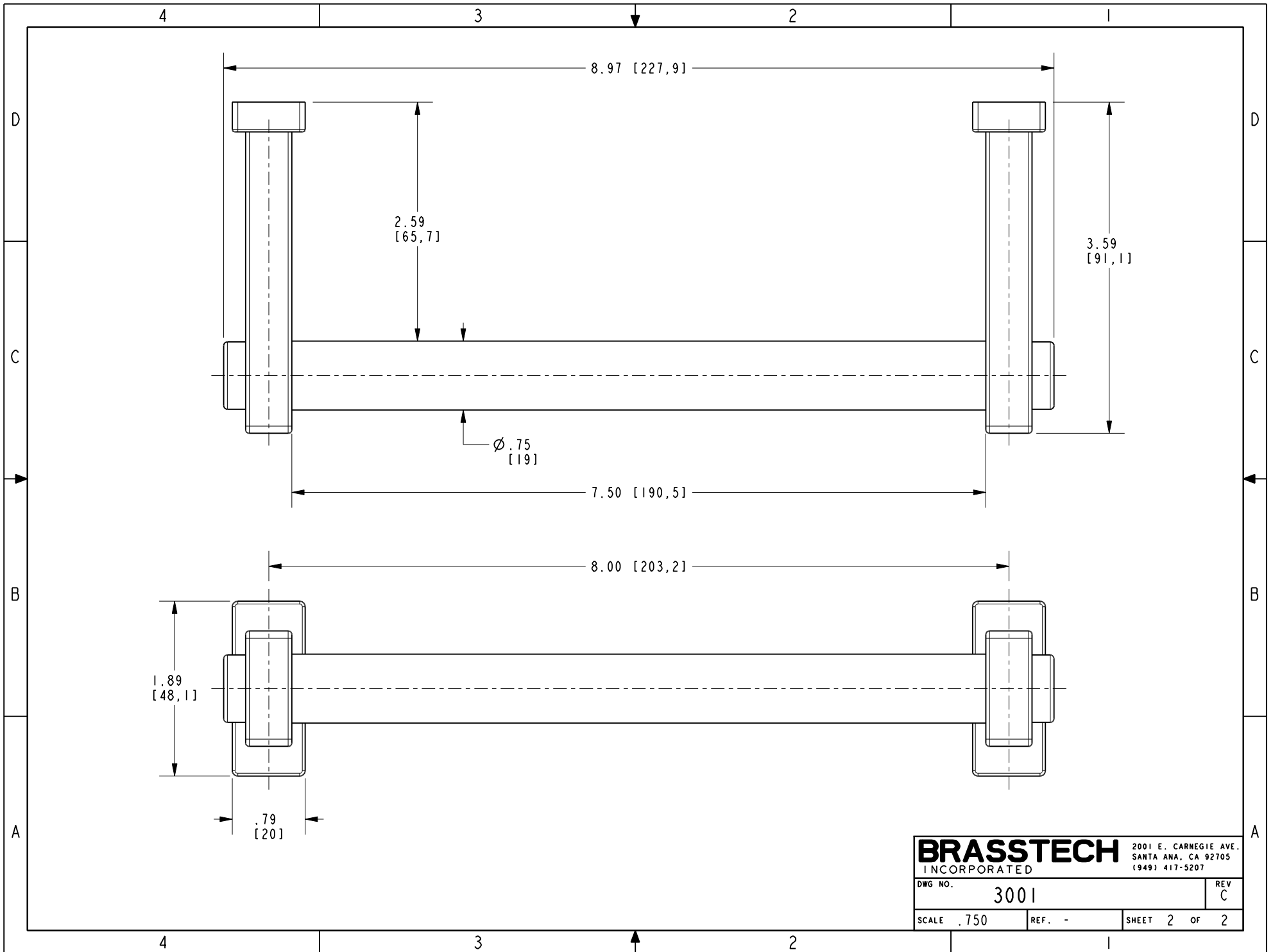
| | | |
|--------------------------------|----------------|----------|
| UNITS ARE: INCHES [MM] | | |
| TOLERANCES ARE: | | |
| FRACTIONS | DECIMALS | ANGLES |
| ±1/16" | .X ±.1 [2.5] | ±° |
| | .XX ±.06 [1.5] | |
| (X.XXX) DENOTES CRITICAL DIMS. | | |
| ALL THREADS ARE CRITICAL | | |
| DRAWN | JINSON | 11/16/21 |
| CHECKED | R.S. | 11/16/21 |
| APPROVED | R.S. | 11/16/21 |

BRASSTECH 2001 CARNEGIE AVE.
INCORPORATED SANTA ANA, CA 92705
(949) 417-5207

8" TOWEL BAR

| ZONE | REV | DESCRIPTION | DATE | APPROVED |
|------|-----|-------------|----------|----------|
| - | C | EN-4417 | 11/16/21 | R.S. |

| | | | |
|---------|------|------|---|
| DWG NO. | 3001 | REV | C |
| SCALE | .325 | REF. | - |
| SHEET | 1 | OF | 2 |



| | | | |
|------------------|------|--|---|
| BRASSTECH | | 2001 E. CARNEGIE AVE. SANTA ANA, CA 92705 (949) 417-5207 | |
| DWG NO. | 3001 | REV | C |
| SCALE | .750 | REF. | - |
| SHEET 2 | | OF 2 | |