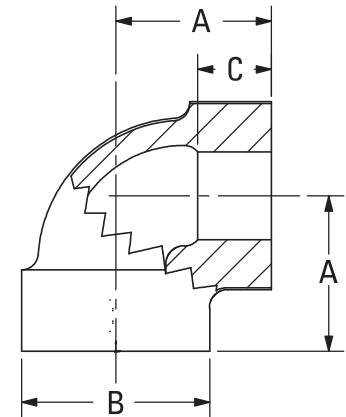


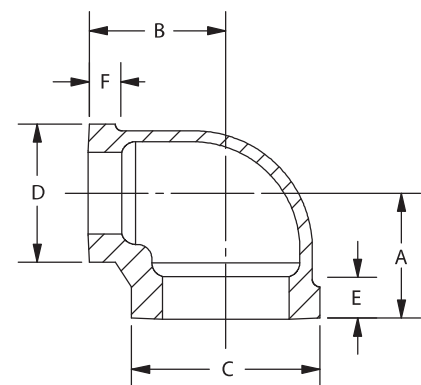
## MALLEABLE IRON 90° STRAIGHT ELL CLASS 150

NPS	Center to End A	Outside Dia. of Band B (min)	Length of Threads C (min)	Take Out
1/8	0.69	0.69	0.25	0.42
1/4	0.81	0.84	0.32	0.40
3/8	0.95	1.01	0.36	0.54
1/2	1.12	1.20	0.43	0.58
3/4	1.31	1.46	0.50	0.76
1	1.50	1.77	0.58	0.81
1 1/4	1.75	2.15	0.67	1.04
1 1/2	1.94	2.43	0.70	1.21
2	2.25	2.96	0.75	1.49
2 1/2	2.70	3.59	0.92	1.56
3	3.08	4.28	0.98	1.88
3 1/2	—	—	—	—
4	3.79	5.40	1.08	2.49
5	—	—	—	—
6	5.13	7.77	1.28	3.61



## MALLEABLE IRON REDUCING 90° ELL CLASS 150

NPS	Center to End A	Center to End B	Outside Dia. of Band C (min)	Outside Dia. of Band D (min)	Length of Threads E (min)	Length of Threads F (min)	Take Out	Take Out
1/4 x 1/8	0.74	0.76	0.84	0.69	0.32	0.25	0.33	0.49
3/8 x 1/4	0.88	0.90	1.01	0.84	0.36	0.32	0.47	0.49
3/8 x 1/8	—	—	—	—	—	—	—	—
1/2 x 3/8	1.04	1.03	1.20	1.01	0.43	0.36	0.50	0.62
1/2 x 1/4	0.97	0.98	1.20	0.84	0.43	0.32	0.43	0.57
3/4 x 1/2	1.20	1.22	1.46	1.20	0.50	0.43	0.65	0.68
3/4 x 3/8	1.12	1.13	1.46	1.01	0.50	0.36	0.57	0.72
3/4 x 1/4	—	—	—	—	—	—	—	—
1 x 3/4	1.37	1.45	1.77	1.46	0.58	0.50	0.68	0.90
1 x 1/2	1.26	1.36	1.77	1.20	0.58	0.43	0.57	0.82
1 x 3/8	1.18	1.27	1.77	1.01	0.58	0.36	0.49	0.86
1 1/4 x 1	1.58	1.67	2.15	1.77	0.67	0.58	0.87	0.98
1 1/4 x 3/4	1.45	1.62	2.15	1.46	0.67	0.50	0.74	1.07
1 1/4 x 1/2	1.34	1.53	2.15	1.20	0.67	0.43	0.63	0.99
1 1/2 x 1 1/4	1.82	1.88	2.43	2.15	0.70	0.67	1.09	1.47
1 1/2 x 1	1.65	1.80	2.43	1.77	0.70	0.58	0.92	1.11
1 1/2 x 3/4	1.52	1.75	2.43	1.46	0.70	0.50	0.79	1.20
*1 1/2 x 1/2	1.41	1.66	2.43	1.20	0.70	0.43	0.68	1.12
2 x 1 1/2	2.02	2.16	2.96	2.43	0.75	0.70	1.26	1.626
2 x 1 1/4	1.90	2.10	2.96	2.15	0.75	0.67	1.14	1.69
2 x 1	1.73	2.02	2.96	1.77	0.75	0.58	0.97	1.33
2 x 3/4	1.60	1.97	2.96	1.46	0.75	0.50	0.84	1.42
*2 x 1/2	1.49	1.88	2.96	1.20	0.75	0.43	0.73	1.34
2 1/2 x 2	2.39	2.60	3.59	2.96	0.92	0.75	1.25	1.84
2 1/2 x 1 1/2	2.16	2.51	3.59	2.43	0.92	0.70	1.02	1.78
3 x 2 1/2	—	—	—	—	—	—	—	—
3 x 2	2.52	2.89	4.28	2.96	0.98	0.75	1.32	2.13
4 x 3	3.30	3.60	5.40	4.28	1.08	0.98	2.00	2.40



\* Manufactured to WARD specifications