

*For Residential and Commercial Applications*

Job Name		Engineer / Architect	
Job Location		Wholesaler	
Submittal Date		Contractor	

## 1-**\*\*DL/ 3-**\*\*DL** Copper Toilet Riser – One-Piece w/ Gasket Nosepiece**

**Use:** For use in potable water distribution systems in accessible locations only.

**Design Features:**

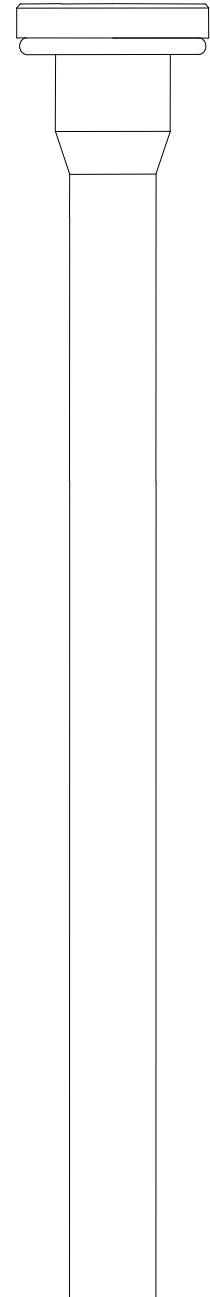
- **One-piece construction**
- **Cut to Length** for professional finished appearance

**Operating Specifications:**

**Temperature:** 40°- 180° F

**Pressure:** 125 psi maximum

**Tubing Diameter:** 0.38" O.D. or 0.50" O.D.



**MATERIAL SPECIFICATIONS**

<b>Tube</b>	<i>C12200 copper per ASTM B-68</i>
<b>Nosepiece</b>	<i>POM</i>



**Part Listing:**

- 1-12DL C 3/8" OD Tube x 11-1/2" Length, chrome plated
- 1-12DL CBT 3/8" OD Tube x 11-1/2" Length, chrome plated, plain label, bulk
- 1-12DL CF 3/8" OD Tube x 11-1/2" Length, chrome plated, flag label
- 1-12DL C1 3/8" OD Tube x 11-1/2" Length, chrome plated, individually boxed
- 1-12DL R 3/8" OD Tube x 11-1/2" Length, rough finish
- 1-12DL BZP 3/8" OD Tube x 11-1/2" Length, oil rubbed bronze, bagged
- 1-12DL NSP 3/8" OD Tube x 11-1/2" Length, oil rubbed bronze, bagged
- 1-15DL C 3/8" OD Tube x 14-1/2" Length, chrome plated
- 1-20DL C 3/8" OD Tube x 19-1/2" Length, chrome plated
- 1-20DL CBT 3/8" OD Tube x 11-1/2" Length, chrome plated, plain label, bulk
- 1-20DL CF 3/8" OD Tube x 19-1/2" Length, chrome plated, flag label
- 1-20DL C1 3/8" OD Tube x 19-1/2" Length, chrome plated, individually boxed
- 1-20DL R 3/8" OD Tube x 19-1/2" Length, rough finish
- 1-20DL BZP 3/8" OD Tube x 19-1/2" Length, oil rubbed bronze, bagged
- 1-20DL NPP 3/8" OD Tube x 19-1/2" Length, polished nickel, bagged

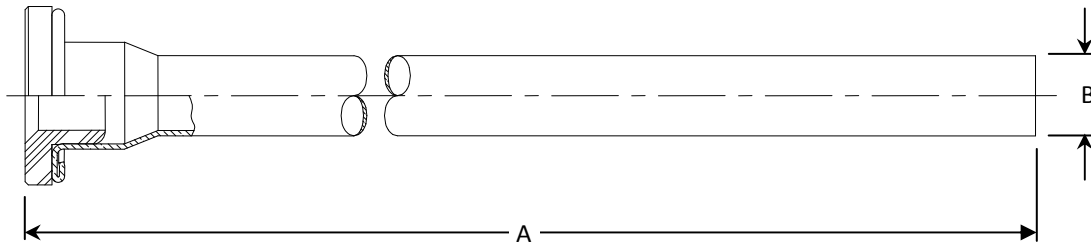
*This specification and all information contained herein is the confidential and exclusive property of BrassCraft Manufacturing, and shall not be disclosed to others without the written consent of BrassCraft. This specification must be returned to BrassCraft if requested.*

**BrassCraft®**

# 1-\*\*DL/ 3-\*\*DL Copper Toilet Riser – One-Piece w/ Gasket Nosepiece

**Part Listing (con't):**

- 1-20DL NSP 3/8" OD Tube x 19-1/2" Length, satin nickel, bagged
- 1-20DL PP 3/8" OD Tube x 19-1/2" Length, polished brass, bagged
- 1-30DL C 3/8" OD Tube x 29-1/2" Length, chrome plated
- 1-30DL C1 3/8" OD Tube x 29-1/2" Length, chrome plated, individually boxed
- 3-12DL C 1/2" OD Tube x 11-1/2" Length, chrome plated
- 3-12DL CBT 1/2" OD Tube x 11-1/2" Length, chrome plated, plain label, bulk
- 3-12DL C1 1/2" OD Tube x 11-1/2" Length, chrome plated, individually boxed
- 3-12DL RBT 1/2" OD Tube x 11-1/2" Length, rough finish, plain label, bulk
- 3-12DL-1 R 1/2" OD Tube x 11-1/2" Length, no gasket, rough finish
- 3-20DL C 1/2" OD Tube x 19-1/2" Length, chrome plated
- 3-20DL CBT 1/2" OD Tube x 19-1/2" Length, chrome plated, plain label, bulk
- 3-20DL C1 1/2" OD Tube x 19-1/2" Length, chrome plated, individually boxed
- 3-20DL-1 R 1/2" OD Tube x 19-1/2" Length, no gasket, rough finish



PART DIMENSIONS (Inches)		
Model	DIM. A	DIA. B
1-12DL	11.56	3/8
1-15DL	14.56	3/8
1-20DL	19.56	3/8

PART DIMENSIONS (Inches)		
Model	DIM. A	DIA. B
1-30DL	29.56	3/8
3-12DL	11.56	1/2
3-20DL	19.56	1/2

**Listings & Certifications:**

- IAPMO listed to ASME A112.18.1-2005 / CSA B125.1-2005 (File # 0645)



*This specification and all information contained herein is the confidential and exclusive property of BrassCraft Manufacturing, and shall not be disclosed to others without the written consent of BrassCraft. This specification must be returned to BrassCraft if requested.*

