

## EXTENSION INSTALLATION

May 2006

Thank you for choosing Endura®. Below are the installation instructions for extension sets 3935AX6 and 3920AX6. If you have any questions please contact us at: 1-800-461-1771.

### Components

3 - 1/2" Sch 40 pipe x 8 1/4"  
 3 - 1/2" Sch 40 couplings  
 2 - L Shaped extension components  
 11 - 1 1/4" screws

### Equipment Required

Silicone Sealant    Level  
 Hammer            Screwdriver  
 Pliers                Saw  
 Nail Punch          Pencil



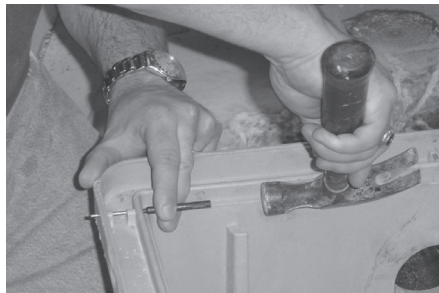
### Multiple Extensions

The Endura® Extension Risers were designed to be nested on top of one another. In the event that an installation is deeper than 6", follow the procedure described below and nest the extension riser sets into the flange of the previous extension.

**Note:** The flow control device can also be located in-floor with the use of the Canplas backwater valve sleeve kit. Available for 2", 3" and 4" models.

### Preparing the Endura® Tank to Accommodate the Extension

**Step 1** Open the Quick Connect latches and remove the lid from the tank.



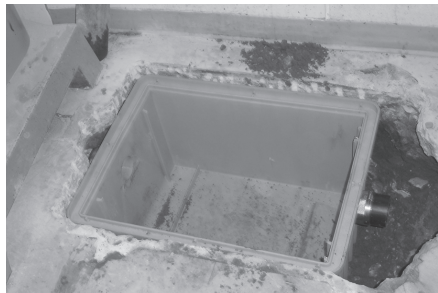
### Step 2

With a hammer and a punch, disengage the dowel pin from the tank. Using a pair of pliers, remove the dowel pin. Repeat this procedure for all of the pins housed in the tank.



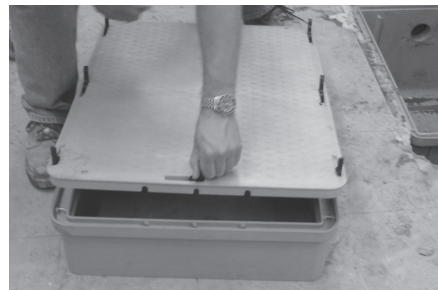
### Step 5

Apply a generous bead of silicone to the tongue and groove channel on the ends of the extension components.



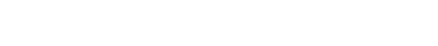
### Step 3

Insert the tank into the excavated hole and locate the pipe connections to the desired height.



### Step 6

Working on a flat surface, mate the stem of the extension component into the tongue and groove channel. Locate the lid on top of the extensions and close the latches, making the assembly firm.



### Step 4

Level the tank into its final position and make your connections to the tank using flexible mechanical connectors as per normal installation.



### Step 7

Locate the assembly on to the tank insuring that it is fully seated between the location points. Determine if the extension assembly needs to be shortened and mark accordingly.



## Preparing the Endura® Tank to Accommodate the Extension



### Step 8

Measuring from the top of the extension, confirm the height required and cut the extension assembly using a suitable hand or power saw.



### Step 9

Apply a generous bead of silicone to center of the flange on the tank. Insert the extension assembly in the center channel on the top of the tank.



### Step 10

Press down on the lid and push the components together. Ensure the extension is firmly seated into the flange of the tank.



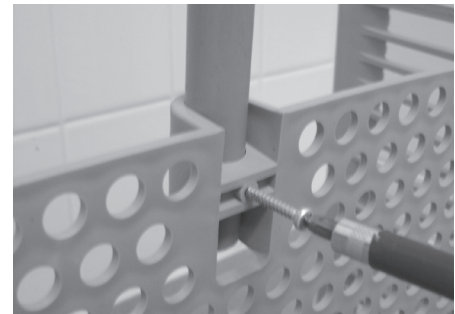
### Step 11

With the 1 1/4" screws provided, insert the screws through the existing dowel holes and secure the extension to the tank.



### Step 12

Measure the distance to the top of the tank. For the 3920AX-6, subtract 3/8". For the 3950AX-6 subtract 1/2". Cut the Sch 40 pipe to the required height.



### Step 13

Using the screw location provided on the inlet, outlet and diffuser (35/50 GPM only) baffles secure the Schedule 40 pipe to the baffle.



### Step 14

This enables the user to use the Sch 40 pipe as a handle to remove the baffles for maintenance.



### Step 15

Solvent weld the 1/2" coupling provided to the top of the pipe. This prevents upward movements of the baffles in operation and provides a positive grip for baffle removal.



### Step 16

Finish the floor. Note: Backfill should be hand tamped only. To minimize risk of distortion or movement the tank should be filled with water and the cover secured in place, during back filling and finishing.