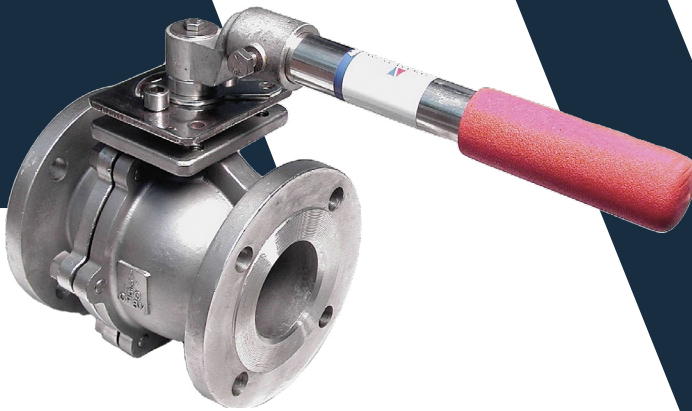




4000

SERIES





4000 SERIES BALL VALVES

STRENGTH • LUBRICITY • BONDING

REMOVABLE HANDLE/
A53 SCHEDULE 40 PIPE

BLOWOUT-PROOF
STAINLESS STEEL STEM

LOCKABLE IN
FULL OPEN OR
CLOSED POSITIONS

ISO MOUNTING PAD
FOR EASY AUTOMATION

EPOXY COATING

SAME FACE-TO-
FACE FLANGED
DIMENSIONS AS ANY
125/150 CLASS GATE
OR BALL VALVE

REINFORCED
PTFE SEATS
WITH LOW
PRESSURE
BACK SEAL

FULL PORT
THROUGH 6 IN.

LEAD-FREE
FOR POTABLE
WATER

- CORROSION-RESISTANT
- INHIBITS SCALE BUILDUP
- LASTS TEN-TIMES LONGER
- EASY-TO-TURN



SPECIFICATIONS:

- A536 grade 65-45-12 ductile iron body
- PFA* fused solid stainless steel ball
- Blow-out proof stainless steel stem
- Reinforced PTFE seats
- Face to face and flanged dimensions conform to ANSI Standard B16.10 which exactly match end to end dimensions of carbon steel ball valves, ductile iron gate valves, and plug valves
- Lockable in full open or closed positions
- ISO mounting pad for easy actuation
- Adjustable length/removable handles to fit into areas of limited space
- Full port through 6"
- Certified to meet the requirements of:
NSF/ANSI 61 and NSF/ANSI 372
MSS SP-72
ANSI B16.5 Raised Face
FED. SPEC. WW-V-35
AWWA C507-99 (Proof of Design)

RATINGS:

- 150 psi WSP
- 300 psi WOG
- 366° F
- This ductile iron ball valve has been engineered to replace any plug valve, carbon steel ball valve, or gate valve.

*PFA is an ingredient commonly branded as Teflon®.



WATER QUALITY
IN ACCORDANCE
WITH NSF/ANSI 372
<MH60647>



WATER QUALITY
NSF/ANSI 61
<MH60647>

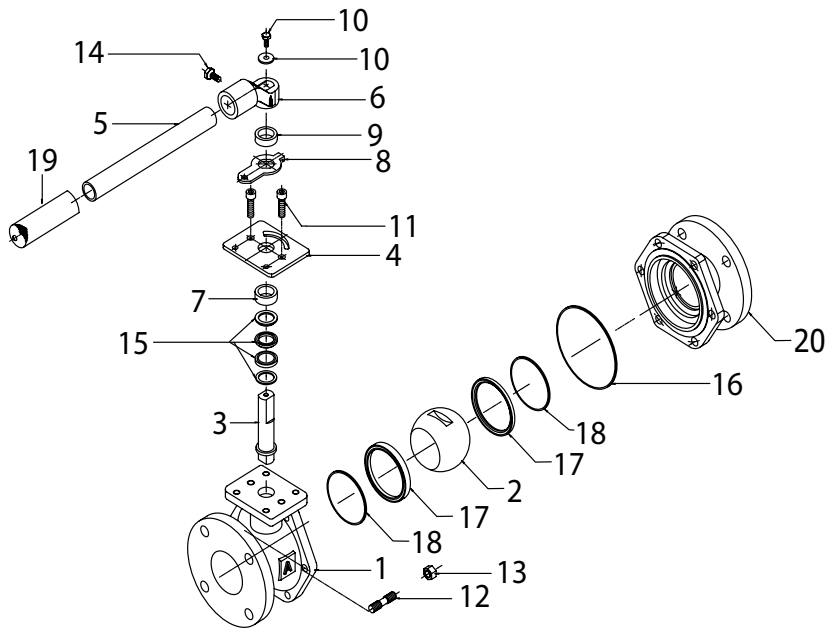
SAMPLE SPECIFICATION

Ball valves shall be of the floating-ball design providing bi-directional, tight shutoff in accordance with MSS SP-72. The valves shall be rated at 150# WSP/300# WOG. Bodies shall be ductile iron per ASTM A536, With ANSI Class 150 raised-face flanges. The interior and exterior of the body shall be powder coated to meet NSF/ANSI 61 and NSF/ANSI 372. The ball shall be PFA infused stainless steel, with a stainless steel blowout-proof stem. The seats and body seals shall be PTFE. The stem seal shall be PTFE, externally adjustable chevron type. Valves shall be equipped with locking handles as standard. Valves may be equipped with 2" square operating nuts, manual gear operators, or pneumatic, electric, or hydraulic actuators. Valves shall be the 4000D Series as manufactured by American Valve, Inc. or as approved by the engineer.



MATERIAL SPECIFICATIONS

	Part	Material	ASTM
1	Body	Ductile Iron	ASTM A536
2	PFA* Fused Ball	Stainless Steel	ASTM A743 GR.CA 15
3	Stem	Stainless Steel	ASTM SA 479 -10a
4	Gland Plate	Steel	ASTM A53M
5	Handle	Steel	ASTM A53M
6	Handle Bracket	Ductile Iron	ASTM A536
7	Packing Follower	Stainless Steel	ASTM SA 479 -10a
8	Stem Indicator	Steel	ASTM A53M
9	Handle Bracket Spacer	Stainless Steel	ASTM SA 479 -10a
10	Stem Stud	Steel	ASTM A193
11	Gland Stud	Steel	ASTM A53M
12	Body Stud	Steel	ASTM A53M
13	Body Nut	Steel	ASTM A53M
14	Handle Bracket Bolt	Steel	ASTM A193
15	Packing	PTFE	ASTM D3294
16	Body Gasket	PTFE	ASTM D3294
17	Seat Ring	RPTFE 15% GF	ASTM D4894
18	Back Seat O-Ring	PTFE	ASTM D3294
19	Handle Grip	Red Foam Rubber	ASTM D 749
20	Body Cap	Ductile Iron	ASTM A536



DIMENSIONS

	2"	2 1/2"	3"	4"	6"	8"	10"
A Face to Face	7"	7.5"	8"	9"	10.5"	11.5"	13"
B Center of Port to Top	6.5"	7.5"	8.25"	9"	12"	12.25"	13.5"
C Flange Diameter	6"	7"	7.5"	9"	11"	13.5"	16"
D Center of Valve to Handle End	12.5"	14"	14"	16"	30.5"	30.5"	33.625"
E Port Diameter	2"	2.5"	3"	4"	6"	6"	7.875"
Bolt Holes	4	4	4	8	8	8	12
Weight lbs.	24	43	50	77	149	190	309
CV	500	750	1245	2500	5470	4150	6700
Mounting Pad	F07	F10	F10	F10	F12	F12	F12

