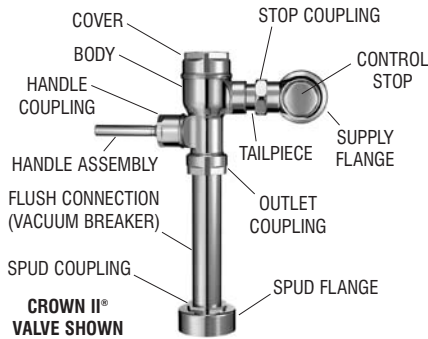


# SLOAN®

## Crown II® and Crown®

### Flushometer Maintenance Guide

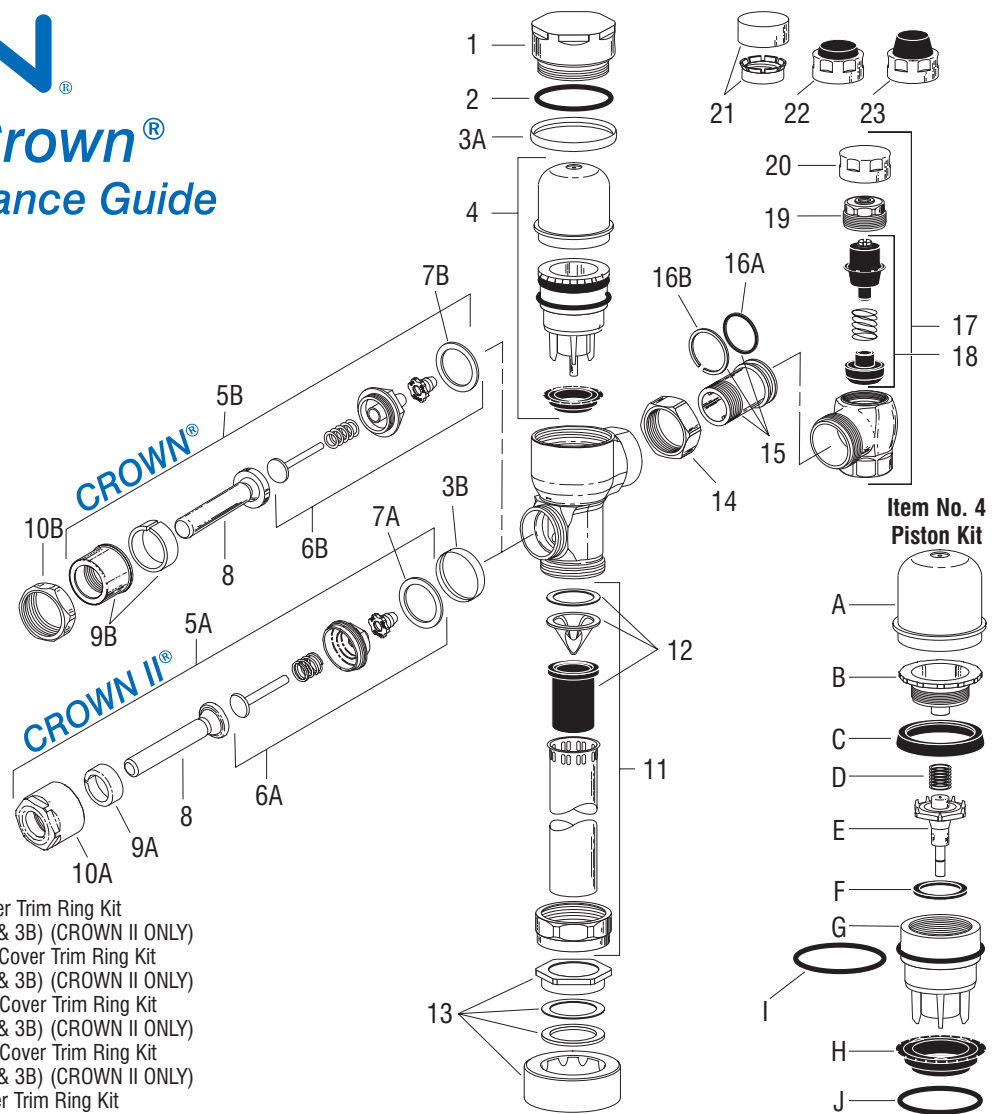


#### LEGEND

CP	Chrome Plate
PVDBN	Brushed Nickel
PVDGP	Gold Plate
PVDPB	Polished Brass
SF	Satin Chrome

#### PARTS LIST

ITEM CODE NO.	PART NO.	DESCRIPTION
1. 0332006	CR-116	CP Cover
2. 0332030	CR-133	Cover O-ring
3. 0332045	CR-132-A	CP Handle and Cover Trim Ring Kit (Includes items 3A & 3B) (CROWN II ONLY)
0332046	CR-132-A	PVDPB Handle and Cover Trim Ring Kit (Includes items 3A & 3B) (CROWN II ONLY)
0332047	CR-132-A	PVDGP Handle and Cover Trim Ring Kit (Includes items 3A & 3B) (CROWN II ONLY)
0332048	CR-132-A	PVDBN Handle and Cover Trim Ring Kit (Includes items 3A & 3B) (CROWN II ONLY)
0332049	CR-132-A	SF Handle and Cover Trim Ring Kit (Includes items 3A & 3B) (CROWN II ONLY)
3A. 0332035	CR-134	Cover Trim Ring (CROWN ONLY)
0332009	CR-120	PVDPB Cover Trim Ring (CROWN II ONLY)
0332032	CR-120	PVDGP Cover Trim Ring (CROWN II ONLY)
0332033	CR-120	PVDBN Cover Trim Ring (CROWN II ONLY)
0332034	CR-120	SF Cover Trim Ring (CROWN II ONLY)
3B. 0332005	CR-113	PVDPB Handle Trim Ring (CROWN II ONLY)
0332027	CR-113	PVDGP Handle Trim Ring (CROWN II ONLY)
0332028	CR-113	PVDBN Handle Trim Ring (CROWN II ONLY)
0332029	CR-113	SF Handle Trim Ring (CROWN II ONLY)
4. 3332003	CR-1004-A	Piston Kit — 1.6 gpf/6.0 Lpf Water Closet
3332004	CR-1005-A	Piston Kit — 1.0 gpf/3.8 Lpf Urinal
3332005	CR-1006-A	Piston Kit — 0.5 gpf/1.9 Lpf Urinal
<b>ALL PISTON KITS INCLUDE CR-125-A MAIN SEAT (Item H - See Table)</b>		
5A. 0302353	B-30-A	ADA-Compliant Handle Assembly CP
5B. 0302390	B-73-A	ADA-Compliant Handle Assembly CP
6A. 3332006	CR-1007	Handle Repair Kit — 1 per pkg.
6B. 3302306	B-51-A	Handle Repair Kit — 1 per pkg.
7A. 0301139	A-31	Handle Gasket — 1 per pkg.
7B. 5301139	A-31	Handle Gasket — 48 per pkg.
8. 0302389	B-74-A	Handle Grip Sub-Assembly ADA
9A. 0302309	B-56	Sleeve
9B. 0302109	B-7-A	CP Socket Assembly
10A. 0302354	B-53	Handle Socket
10B. 0301082	A-6	CP Handle Coupling
11. 3393004	V-600-AA	3/4" (19 mm) x 9" (229 mm) Vacuum Breaker — 6 per pkg.
3393006	V-600-AA	1 1/4" (32 mm) x 9" (229 mm) Vacuum Breaker — 6 per pkg.
3393007	V-600-AA	1 1/2" (38 mm) x 9" (229 mm) Vacuum Breaker — 6 per pkg.
12. 3323182	V-651-A	High Back Pressure Vacuum Breaker Repair Kit
13. 3332000	CR-1008-A	3/4" (19 mm) Spud Coupling Assembly
3332001	CR-1009-A	1 1/4" (32 mm) Spud Coupling Assembly
3332002	CR-1010-A	1 1/2" (38 mm) Spud Coupling Assembly
14. 0308676	H-550	Stop Coupling



15. 0308801	H-551-A	Adjustable Tailpiece (2 1/16" / 52 mm long)
16A. 5308696	H-553	O-ring — 24 per pkg.
16B. 5308381	H-552	Locking Ring — 12 per pkg.
17. 0388000	H-700-A	1" Screwdriver Bak-Chek® Stop CP
0388001	H-700-A	3/4" Screwdriver Bak-Chek® Stop CP
18. 3308853	H-541-A	Control Stop Repair Kit †
3308856	H-543-A	Control Stop Repair Kit ‡
19. 0308612	H-622	CP Bonnet †
0308843	H-577	CP Bonnet ‡
20. 3308840	H-573-A	Locking Vandal Resistant Control Stop Cap includes H-573 Stop Cap CP and H-648 Friction Ring †
0308848	H-582	Locking Vandal Resistant Control Stop Cap CP ‡
21. 3308651	H-651	Vandal Resistant Control Stop Cap Assembly †
22. 3308866	H-574	Control Stop Cap w/Bumper (-YO Variation) †
23. 3308867	H-576	Control Stop Cap w/Extended Bumper (-YG Variation) †
— 0305190	EL-190-A	Handle Adapter, converts Optima Version Flushometer to Manual Version (not shown)

† For use w/H-700-A 1" & 3/4" and H-600-A 1" Screwdriver Bak-Chek® Control Stops.

‡ For use w/H-600-A 3/4" Screwdriver Bak-Chek® Control Stops.

4. PISTON COMPONENTS (*** indicates component is NOT available separately)			
ITEM	CODE NO.	PART NO.	DESCRIPTION
A	0332000	CR-124-A	Inside Cover Sub-Assembly
B	***	***	Piston Cover
C	0307106	G-78	Molded Cup — 1 per pkg. / 5307106 — 12 per pkg.
D	0328019	SH-406	Spring — 1 per pkg. / 5328019 — 12 per pkg.
E	***	***	Relief Valve
F	0307116	G-95	Relief Valve Seat
G	***	***	Piston Body
H	0332013	CR-125-A	Main Seat
I	0307210	G-85	Filter O-ring
J	0305135	EL-110	O-ring

The information contained in this document is subject to change without notice.

# Troubleshooting and Maintaining Sloan CROWN II® & CROWN® Flushometers

## 1. PROBLEM: Valve does not function.

- CAUSE:** (a.) Control Stop or Main Valve is Closed.  
(b.) Handle Assembly is worn.  
(c.) Relief Valve is worn and sticking in UP position.

- SOLUTION:** (a.) Open Control Stop or Main Valve.  
(b.) Install Sloan Handle Repair Kit (CR-1007 for CROWN II), (B-51-A for CROWN), or replace Handle.  
(c.) Replace Piston.

## 2. PROBLEM: Insufficient volume of water to adequately siphon fixture.

- CAUSE:** (a.) Control Stop not open enough.  
(b.) Urinal Piston Parts inside a Closet Valve.  
(c.) Low Consumption Valve installed on a non-Low Consumption fixture.  
(d.) Inadequate volume or pressure at supply.

- SOLUTION:** (a.) Adjust Control Stop for desired delivery of water.  
(b.) Replace Piston Parts with proper Closet Piston.  
(c.) Replace with proper Flushometer. Crown Flushometers are not available with flush volume higher than 1.6 gpf/6.0 Lpf.  
(d.) Increase water pressure or supply (flow) to valve. Consult Factory for assistance.

## 3. PROBLEM: Length of flush too short (Short Flushing) or Valve closes off immediately.

- CAUSE:** (a.) Piston Assembly is not hand-tight.  
(b.) Enlarged Bypass orifice from corrosion or damage.  
(c.) Urinal Piston in Closet Flushometer.  
(d.) Low Consumption Piston installed in non-Low Consumption fixture.  
(e.) Handle Assembly worn.

- SOLUTION:** (a.) Screw the assembly hand-tight.  
(b.) Install NEW Inside Parts Kit to correct problem and update Flushometer.  
(c.) Replace Piston with proper Closet Piston.  
(d.) Replace with proper Flushometer. Crown Flushometers are not available with flush volume higher than 1.6 gpf/6.0 Lpf.  
(e.) Install Sloan Handle Repair Kit (CR-1007 for CROWN II) or (B-51-A for CROWN).

## 4. PROBLEM: Length of flush too long (Long Flushing) or fails to close off.

- CAUSE:** (a.) Piston is not seating properly or Bypass orifice is clogged because of foreign material, or Bypass orifice is clogged by an invisible gelatinous film from "over-treated" water.  
(b.) Line pressure has dropped and is not sufficient to force Relief Valve to seat.  
(c.) CR-125-A Main Seat is fouled with debris or is worn.

- SOLUTION:** (a.) Disassemble the working parts and wash thoroughly.  
**NOTE:** Size of the orifice in the Bypass is of utmost importance for the proper metering of water into the upper chamber of the valve. **DO NOT enlarge or damage this orifice.** Replace Piston if cleaning does not correct problem.  
(b.) Shut off all control stops until pressure has been restored, then open them again.  
(c.) Clean or replace CR-125-A Main Seat.

## 5. PROBLEM: Leaking at Handle Assembly.

- CAUSE:** (a.) The B-85 Seal may have deteriorated.  
(b.) Handle Gasket has been omitted.  
(c.) Valve Handle Bushing is worn.  
(d.) Handle Trim Ring is reversed preventing gasket from sealing. (CROWN II only)

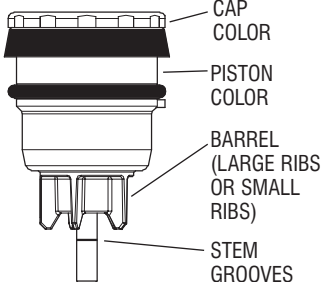
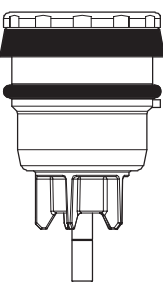
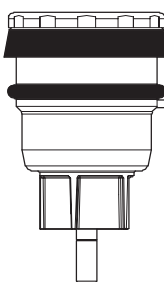
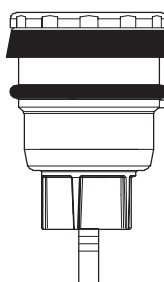
- SOLUTION:** (a.) Install new B-85 Seal.  
**NOTE:** The B-85 Seal will easily slide onto the Bushing if it is wet.  
(b.) Install A-31 Handle Gasket or Sloan Handle Repair Kit (CR-1007 for CROWN II) or (B-51-A for CROWN).  
(c.) Install Sloan Handle Repair Kit (CR-1007 for CROWN II) or (B-51-A for CROWN).  
(d.) Flip Handle Trim Ring (CR-113) and reinstall Handle Assembly. (CROWN II only)

## CARE AND CLEANING INSTRUCTIONS

DO NOT use abrasive or chemical cleaners (including chlorine bleach) to clean Flushometers that may dull the luster and attack the chrome or special decorative finishes. Use ONLY soap and water, then wipe dry with clean cloth or towel.

While cleaning the bathroom tile, the Flushometer should be protected from any splattering of cleaner. Acids and cleaning fluids will discolor or remove chrome plating.

If further assistance is required, please contact the Sloan Valve Company Installation Engineering Dept. at 1-888-SLOAN-14 (1-888-756-2614).

Piston Identification Chart	Water Closet	Urinal	Urinal
	CR-135-A (0332024) 1.6 gpf (6.0 Lpf)	CR-137-A (0332025) 1.0 gpf (3.8 Lpf)	CR-138-A (0332026) 0.5 gpf (1.9 Lpf)
			
Cap Color	Green	Yellow	Red
Piston Color	Clear	Clear	Clear
Barrel	Large Ribs	Small Ribs	Small Ribs
Grooves	1	1	3

**SLOAN VALVE COMPANY • 10500 SEYMOUR AVENUE • FRANKLIN PARK, IL 60131**

Phone: 1-800-9-VALVE-9 or 1-847-671-4300 • Fax: 1-800-447-8329 or 1-847-671-4380 • [www.sloanvalve.com](http://www.sloanvalve.com)