

Dayton® Double Bowl Model DXR250R

GENERAL

Sink bowls are seamlessly drawn of #18 gauge nickel bearing stainless steel. Self-rimming.

DESIGN FEATURES

Bowl Depth: 8-1/8".

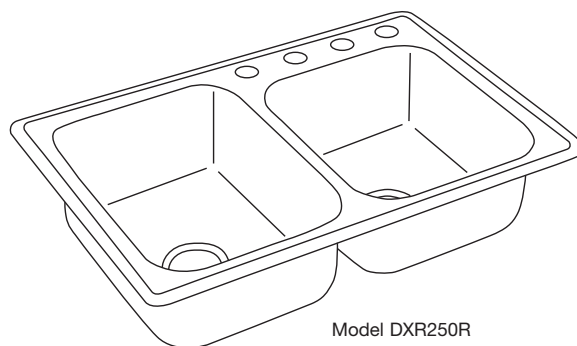
Coved Corners: 3" vertical and 2-1/4" horizontal radius.

Bowl and Faucet Deck Recess: 3/16" below outside edge of sink.

Finish: Exposed surfaces are polished to a satin finish with highshine bowl radius.

Underside: Fully undercoated to prevent condensation and deaden sound.

Self-rimming: Sink is furnished with appropriate number of clamps to provide a secure installation.



OTHER

Drain Opening: 3-1/2".

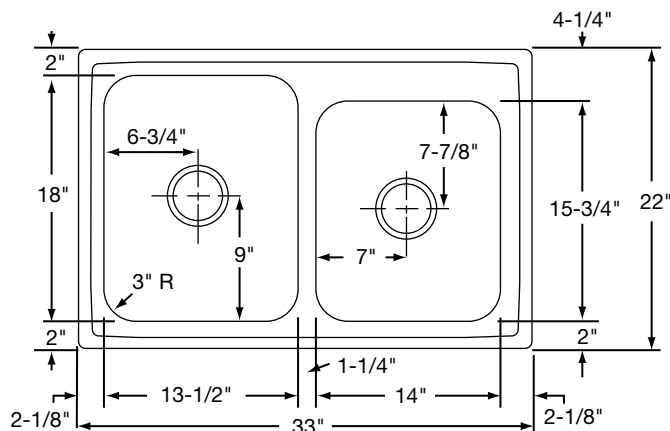
NOTE: Unless otherwise specified, sink is furnished with 4 faucet holes as shown.

This sink complies with ANSI Standard A112.19.3M.

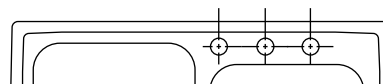
SINK DIMENSIONS (INCHES)*

Model Number	Overall		Inside Left Bowl			Inside Right Bowl			Cutout in Countertop (1½" Radius Corners)	No. of 1½" Dia. Faucet Holes 4" Center	Minimum Cabinet Size	Ship. Wt. Lbs.	
	L	W	L	W	D	L	W	D	L				W
DXR250R	33	22	13½	18	8½	14	15¾	8½	32¾	21¾	3 or 4	36	24

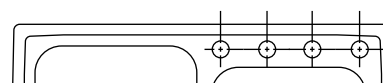
*Length is left to right. Width is front to back.



HOLE DRILLING CONFIGURATIONS



DXR250R3



DXR250R4

ALL DIMENSIONS IN INCHES, TO CONVERT TO MILLIMETERS MULTIPLY BY 25.4.

In keeping with our policy of continuing product improvement, Elkay reserves the right to change product specifications without notice.

This specification describes an Elkay product with design, quality and functional benefits to the user. When making a comparison of other producers' offerings, be certain these features are not overlooked.