

Professional™ Heavy Duty Gas Water Heaters now with the Guardian System™



Available in 48, 60, 75 and 100 Gallon Tall Gas Models

- ▶ 8-Year* Limited Tank and Parts Warranty with a Professional Installation.
- ▶ With ProtectionPlus™ the 8-Year Limited Tank Warranty Becomes 12 Years!

Get
4 MORE YEARS
with ProtectionPlus™



Guardian System™

- One-of-a-kind air/fuel shut-off device offers double protection
- Maintenance free – no filter to clean
- Standard replacement parts

Environmentally Friendly Burner

- Low NOx design for low nitrous oxide emissions
- Self-Cleaning (48 & 60 gallon models only)
- EverKleen™ patented system fights sediment build-up
- Reduces fuel costs
- Provides more hot water

Easy to Light

- No matches required

Energy Efficient

- More hot water at low operating cost

Longer Life

- Patented magnesium anode rod design incorporates a special resistor that protects the tank from corrosion

High Altitude Compliant

- 48, 60 and 75 gallon models are certified for applications up to 7,700 feet above sea level.
- 100 gallon models, up to 2,000 feet above sea level.
- Some models are certified up to 10,200 feet above sea level. Check factory for listings

Plus...

- Brass drain valve and temperature and pressure relief valve are included
- Side water connections for space heating applications (48 & 75 gallon models only)
- Meets or exceeds National Appliance Energy Conservation Act (NAECA) requirements

*See Residential Warranty Information Brochure for complete warranty information.

Energy Factor and Average Annual Operating Costs based on D.O.E. (Department of Energy) test procedures. D.O.E. national average fuel rate natural gas \$1.218/therm; LP \$1.87/gallon.



DESCRIPTION			FEATURES					ROUGHING IN DIMENSIONS (SHOWN IN INCHES)								ENERGY INFO.			
TYPE	GAL. CAP.	MODEL NUMBER	GAS INPUT IN THOUS. BTU/HR.		RECOVERY IN G.P.H. 90° RISE		FIRST HOUR DEL. G.P.H.		HT. TO VENT A	TANK HT. B	DIAM. C	HT. TO GAS CONN. D	VENT SIZE E	WATER CONN. CNTR. F	HT. TO SIDE T&P G	WATER CONN. H	SHIP. WT. (LBS)	ENERGY FACTOR NAT.	AVG. ANN. OPER. COSTS NAT.
			NAT.	LP	NAT.	LP	NAT.	LP											
TALL	48	RHG PRO50-65F	65	48	65.7	48.5	98	88	62-1/2	58-1/2	21-3/4	14	4	11	51-3/4	3/4	180	0.58	\$315
	60	RHG PRO60F	50	50	50.5	50.5	107	107	62	58	23	13-1/4	4	8	48-1/2	3/4	180	0.56	\$326
	75	RHG PRO75F	75.1	65	75.8	67.7	141	109	64	60	26-1/4	14-3/4	4	11	53-1/4	1	320	0.53†	N/A

SPECIFY LP GAS WHEN ORDERING. Add "P" suffix to the model number: Example: RHG PRO75PF.

- 60 gallon models meet SCAQMD rule 1121.
- 75 gallon models meet SCAQMD rule 1146.2.

† Energy Factor for 75 gallon LP model.

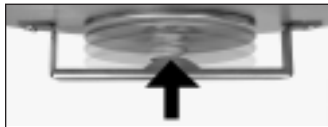
DESCRIPTION			FEATURES					ROUGHING IN DIMENSIONS (SHOWN IN INCHES)								ENERGY INFO.			
TYPE	GAL. CAP.	MODEL NUMBER	GAS INPUT IN THOUS. BTU/HR.		RECOVERY IN G.P.H. 90° RISE		FIRST HOUR DEL. G.P.H.		HT. TO VENT A	TANK HT. B	DIAM. C	HT. TO GAS CONN. D	VENT SIZE E	WATER CONN. CNTR. F	HT. TO SIDE T&P G	WATER CONN. H	SHIP. WT. (LBS)	ENERGY FACTOR NAT.	AVG. ANN. OPER. COSTS NAT.
			NAT.	LP	NAT.	LP	NAT.	LP											
TALL	100	RHG PRO100-75	75	69	75.8	69.7	135	135	68	64	26-1/4	14-3/4	4	11	58	1	350	0.48	\$380
	100	RHG PRO100-73N*	73	-	73.7	-	116	-	68	64	26-1/4	14-3/4	4	11	58	1	350	0.48	\$380

100 GALLON MODELS DO NOT INCLUDE THE GUARDIAN SYSTEM.

SPECIFY LP GAS WHEN ORDERING. Add "P" suffix to the model number: Example: RHG PRO100-75P.

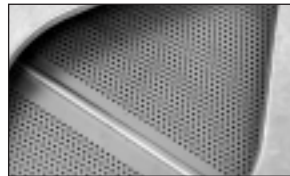
*SCAQMD rule 1121 compliance model.

Rheem Guardian System Features...



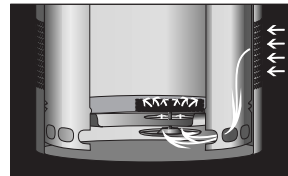
Exclusive Combustion Shut-off System

Should a spill incident occur, the Guardian System shuts off the gas supply and the air supply preventing a sustained vapor burn in the combustion chamber.



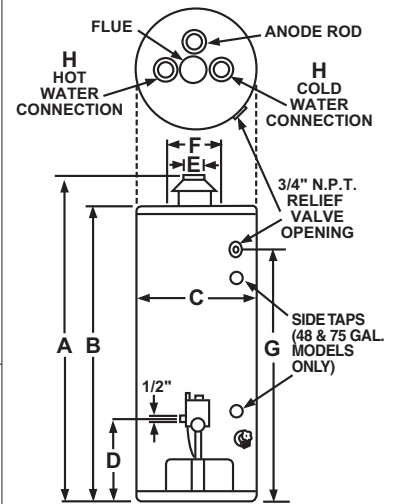
Flame Arrestor Plate

A specially-designed flame arrestor prevents ignition of vapors outside the combustion chamber.



Maintenance Free

Superior air filtration prevents the flame arrestor from becoming clogged by lint, dust and oil.



SIDE TAPS ON 48 & 75 GAL. MODELS ONLY

These units are designed to meet or exceed ANSI (American National Standards Institute) requirements and have been tested according to D.O.E. test procedures and meet or exceed the energy efficiency requirements of NAECA, ASHRAE standard 90, ICC Code and all state energy efficiency performance criteria for energy consuming appliances.

Before purchasing this appliance, read important energy cost and efficiency information available from your supplier.



For more details, see form 101-7.

In keeping with its policy of continuous progress and product improvement, Rheem reserves the right to make changes without notice.

Rheem Water Heaters • 101 Bell Road, Montgomery, Alabama 36117-4305 • www.rheem.com