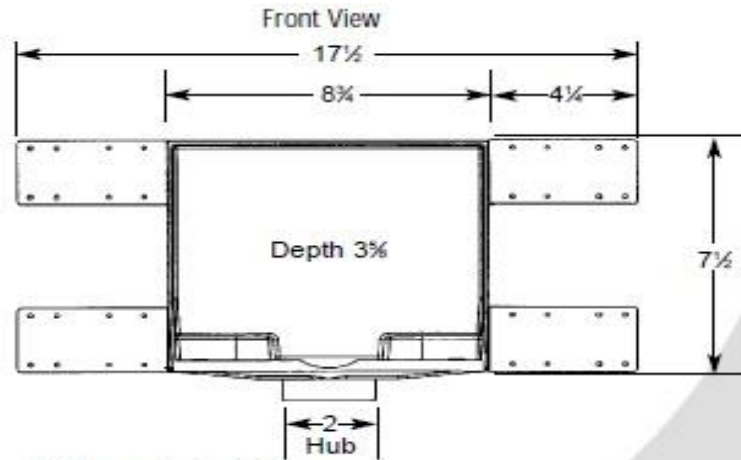
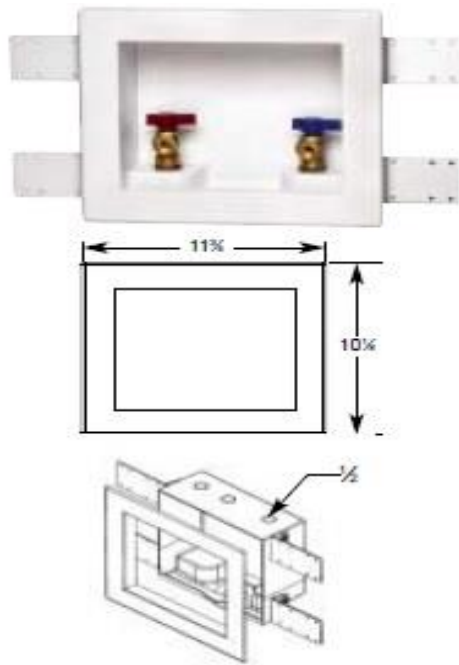


TECHNICAL SPECIFICATION: Oatey's Center Drain washing machine outlet boxes can be used in commercial or residential applications which require supply valves and waste drain recessed into the wall.



(All dimensions in inches)

- 2" drain opening fits PVC or ABS Sch. 40 DWV pipe
- All washing machine outlet boxes are shipped 12 per carton
- Box made of high impact polystyrene
- 4 support brackets included for mounting
- Easy to remove 1/2" top mount knockouts
- Snap-on faceplate frame accommodates up to 1" drywall

PRODUCT No.	DESCRIPTION
38725	CTR F1807-HAMMER STD PKG
38726	CTR F1960-HAMMER STD PKG
38747	1/4 Turn Brass Hammer Ball Valves-Copper Sweat- Standard Pack
38748	1/4 Turn Brass Hammer Ball Valves-CPVC Sweat-Standard Pack
38751	Plain box in polybag- Standard Pack
38753	Plain box in carton-Display Pack
38799	Plain Box-No Valves- Standard Pack- With Grommets
38824	Plain Box in Printed Polybag- Display Pack
38924	1/4 Turn Brass Ball Valves-ASTM F1974 PEX- Standard Pack
38928	Plain Box- No Valves- Standard Pack- 1.5"-2" Drain Outlet
38930	1/4 Turn Brass Ball Valves-CPVC Standard Pack-Top Mount
38933	1/4 Turn Brass Ball Valves-CPVC- Contractor Pack
38934	1/4 Turn Brass Ball Valves-Copper Sweat- Standard Pack
38937	1/4 Turn Brass Ball Valves-CPVC- Standard Pack
38943	1/4 Turn Brass Ball Valves- ASTM F1960 PEX- Standard Pack
38945	1/4 Turn Brass Ball Valves- ASTM F1807 PEX- Standard Pack
38946	1/4 Turn Brass Ball Valves-Copper Sweat-Contractor Pack
38747	1/4 Turn Brass Hammer Ball Valves-Copper Sweat- Standard Pack
38748	1/4 Turn Brass Hammer Ball Valves-CPVC- Standard Pack
38820	Plain box-With Grommets-Display Box
38825	1/4 Turn Brass Ball Valves-Solder Kit- Display Kit
38949	1/4 Turn Brass Ball Valves-ASTM F1807 PEX- Display Bag
38970	1/4 Turn Brass Hammer Ball Valves-Display Box
ACCESSORIES	
38941	Plastic Faceplate for Quadtro, Center and offset WMOB
38768	Plastic Brackets, 4" Long for plastic boxes
38648	Plastic Brackets, 12" long, for plastic boxes