

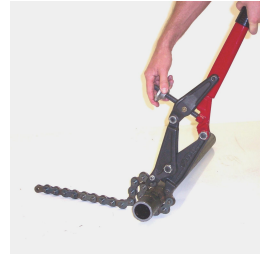
490 Ratchet Cutter Operation



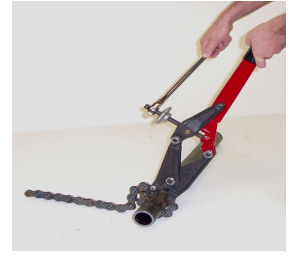
1. Place pipe on outstretched chain next to cutter jaws. Turn hand wheel counter-clockwise until jaws are fully open.



2. Wrap chain around pipe and engage nearest pin in upper jaw hooks.



3. Rotate hand wheel clockwise to remove slack from chain.



4. Place ratchet on head of drive screw and operate clockwise until pipe snaps off. If pipe has not cut before jaw wheels touch, turn counter-clockwise until next pin can be engaged in jaw. Repeat Step 4.

590 Manual Cutter Operation



1. Place pipe to be cut on outstretched chain next to cutter jaws. Open handles to 90°, grasp cutter as shown and rest on pipe.



2. Holding tool in this position, wrap chain around pipe with other hand. Pull chain tight and engage the No. 16 pin nearest to the upper jaws. Be sure surplus chain comes out over the top as shown.



3. Close jaws, and use the adjusting screw #38 to adjust the jaws to the most comfortable cutting angle.



4. If you cannot achieve the proper angle with the #38 screw while the handles are closed, you have inserted the wrong pin. Disengage chain and readjust jaws to take the next pin. Grasp tool as shown, with one foot on lower handle and snap pipe with sharp down-thrust. On extra heavy pipe, exert even downward pressure.

Notes

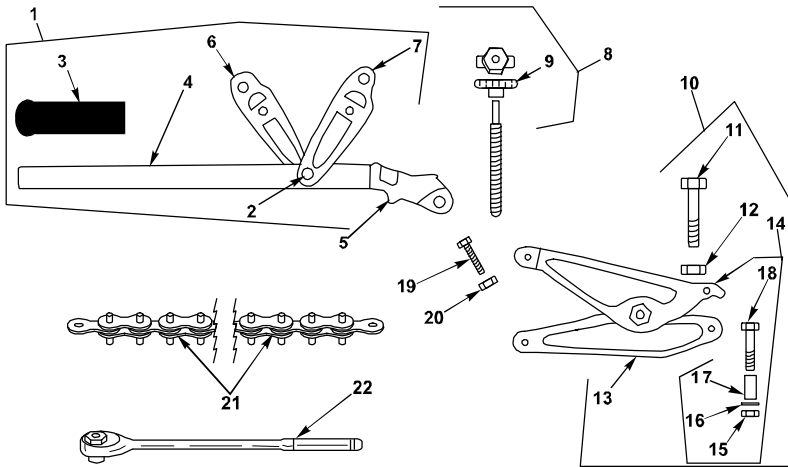
When cutting in a line, remove excess mud, scale and rust from surface of pipe where chain wheels will make contact. This will allow wheels to contact solid pipe for maximum penetration.

Once you have established which chain pin must be engaged for a specific pipe size, place a dab of paint (or other marking) on that pin for easy recognition. This helps to facilitate quick, sure, efficient operation for all cuts of the same pipe size.

Strict observance of all tools capacities must be adhered to.

Be sure to comply with all OSHA regulations when operating cutter. Pipe or rollers may and often will separate with considerable force at a right angle to the cutter head. Be sure when putting cutting pressure on pipe, you are standing at the end of the handles facing the cutter or pipe and that there is no other personnel in the immediate area.

490 Ratchet Cutter Parts



Chain Chart

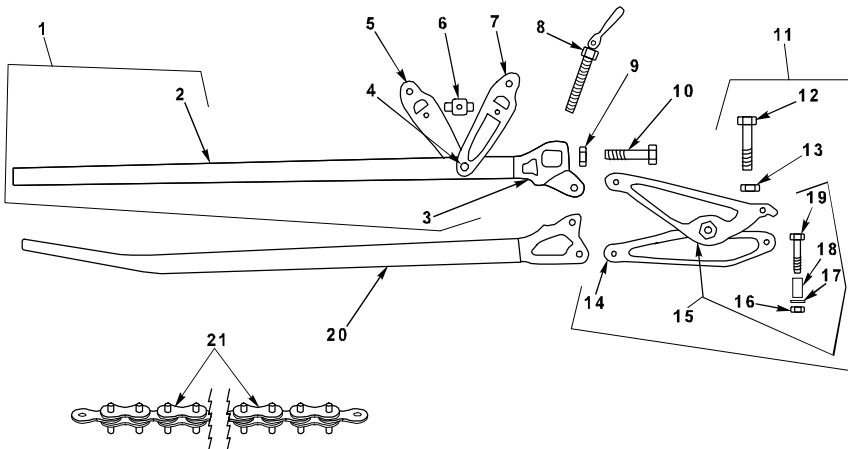
Part No.	Description	Length	No. of Pins
522	Chain for 6" Pipe	26-1/4"	21
532	Chain for 6" Pipe with rollers for No-Hub®	26-1/4"	21
528	Chain for 8" Pipe	36"	29
533	Chain for 8" Pipe with rollers for No-Hub®	36"	29
5210	Chain for 10" Pipe	43-3/4"	35
5212	Chain for 12" Pipe	51"	41
5215	Chain for 15" Pipe	55-1/2"	47

Item No.	Part No.	Description	Qty. Reqd.
1	421	Handle Assembly	1
2	534	Rivet	1
3	580	Grip	1
4	445	Handle with Stub	1
5	446	Stub	1
6	503	Left Cheek	1
7	504	Right Cheek	1
8	700669	Adjusting Screw Assembly with Block	1
9	4901	Knob	1
10	513	Jaw Assembly, Complete	1
11	592	Jaw Hinge Bolt	1
12	593	Nut	2
13	510	Lower Jaw	1
14	34	Upper Jaw Assembly	1
15	729	Cheek Spacer Nut	1
16	4182	Washer	1
17	561	Cheek Spacer	1
18	275663	Cheek Spacer Bolt	1
19	527	Handle Hinge Bolt	2
20	566	Handle Hinge Nut	4
21	*	Chain, Pipe, Complete	1
22	6519	Ratchet	1

For Converting your present chain to cut larger sizes

5256	6"-8", 8"-10", 10"-12" 12"-15"	10"	8
5258	6"-10", 8"-12", 10"-15"	17-1/2"	14
52510	6"-12", 8"-15"	25"	20
52512	6"-15"	32-1/2"	26
519	Kit to convert 590 to 591 and 490 to 491 No-Hub® Cutters		

590 Manual Cutter Parts



Item No.	Part No.	Description	Qty. Reqd.
1	545	Top Handle Assembly	1
2	502	Top Handle	1
3	518	Left Stub	1
4	534	Rivet	1
5	503	Left Cheek	1
6	537	Adjusting Block	1
7	504	Right Cheek	1
8	38	Adjusting Screw Assembly	1
9	566	Handle Hinge Nut	1
10	527	Handle Hinge Bolt	1
11	513	Jaw Assembly, Complete	1
12	592	Jaw Hinge Bolt	1
13	593	Nut	1
14	510	Lower Jaw	1
15	34	Upper Jaw Assembly	1
16	729	Cheek Spacer Nut	1
17	4182	Washer	1
18	561	Cheek Spacer	1
19	275663	Cheek Spacer Bolt	1
20	560	Bottom Handle	1
21	*	Chain, Complete	1



Wheeler-rex
 3744 Jefferson Road * Ashtabula, OH 44004
 Tel: 800-321-7950 Fax: 440-992-2925
 www.wheelerrex.com