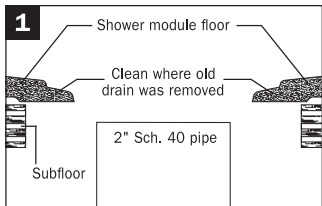
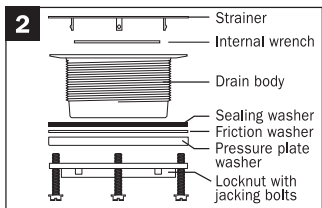


JackRabbit™ Installation Instructions

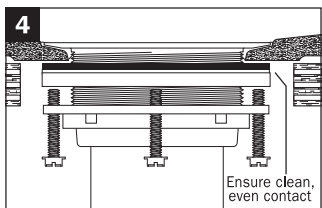
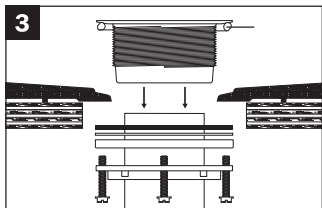


Remove existing shower drain and replace drain pipe as needed. Pipe should terminate just below the underside of the shower module floor. Clean the shower module floor where the old drain was, removing old putty, silicone, debris, etc.

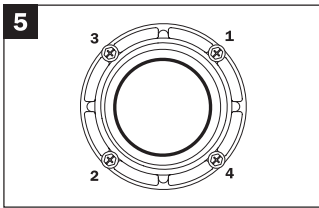


Unscrew and remove locknut, pressure plate washer, friction washer and sealing washer, remove strainer and internal wrench from drain.

From below the shower, thread jacking bolts so that $\frac{1}{4}$ " is exposed above the locknut. Place the locknut, then the pressure plate washer (flat side up), then the friction washer, then the sealing washer (in that order) over the drain pipe for later installation. From the top side of the shower, loosen compression nut in the drain body, and apply a bead of silicone around the underside of drain body flange. Push the drain body over the pipe, taking care not to wrinkle or damage the compression gasket, until the drain is pressed firmly down against the shower module floor.

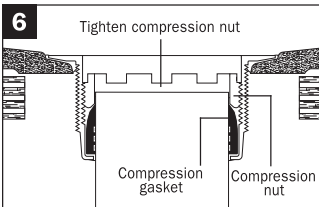


From below the shower, place sealing washer, then friction washer, then pressure plate washer (flat side up), up over the threaded drain body. Be sure there are no obstructions, and that the sealing washer makes clean, even contact with the bottom of the shower module floor. Engage the locknut and hand tighten up against washer stack.



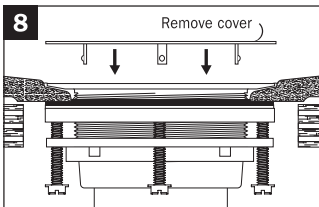
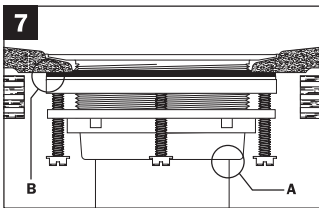
Tighten jacking bolts in order shown, getting tighter each time through the sequence until each bolt is completely tightened.

From the top side of the shower, clean shower floor of any excess silicone that has squeezed out. Tighten compression nut with wrench provided. Remove the wrench and keep it for any necessary retightening.



Check For Leaks. (Silicone must be dried before testing.) Turn water on in shower, and from below shower floor, check the drain area for leaks concentrating on the area between pipe and compression gasket [A] and between shower module floor and sealing washer [B]. If a leak occurs in area A, use the wrench (from step 6) to tighten the compression nut. If a leak occurs in area B, tighten jacking bolts using the same method described in step 5.

When the installation is complete, remove the adhesive cover from the strainer and install in to drain.



www.siouxchief.com

P 1.800.821.3944

F 1.800.758.5950

