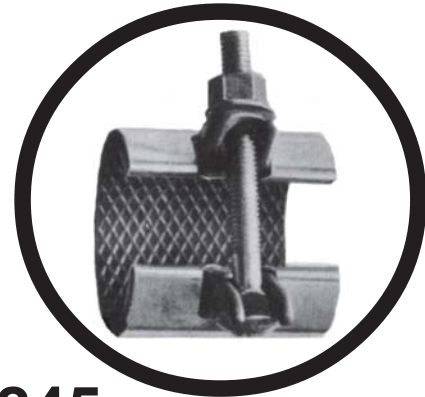
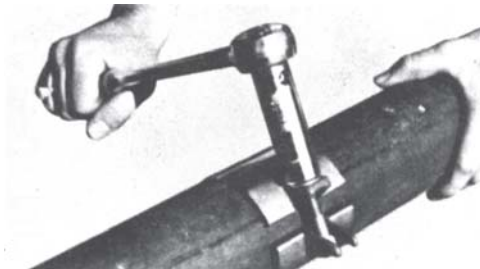
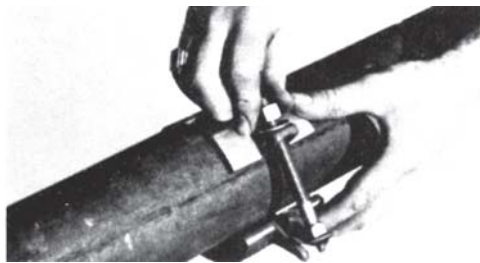
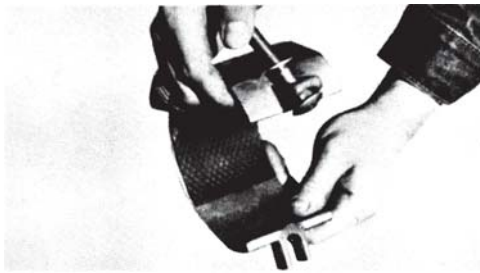
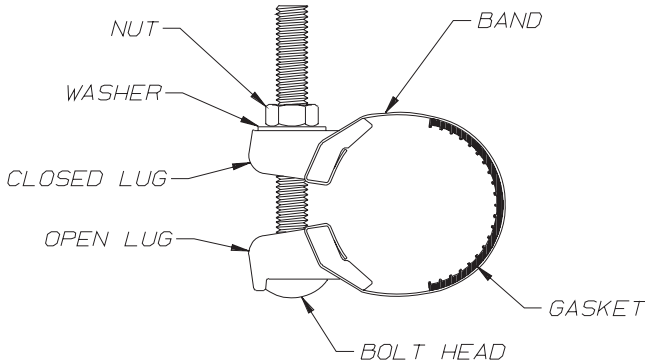




TYPE 245 & 248 REDI-CLAMP INSTALLATION INSTRUCTIONS



TYPE 245



- Clean pipe surface thoroughly, particularly in area where gasket will seat.
- Lubricate pipe and face of gasket with a suitable solution.
- Back-off nut, disengage bolt head from lug and open clamp enough to install on pipe.
- Install on pipe and engage bolt head in lug.
- Center gasket over leak.
- Tighten nut securely to stop leak.
Max. recommended torque: 7/16" bolt - 30 ft. lbs.
3/8" bolt - 25 ft. lbs.
- On clamps having more than one bolt, tighten uniformly and progressively.

