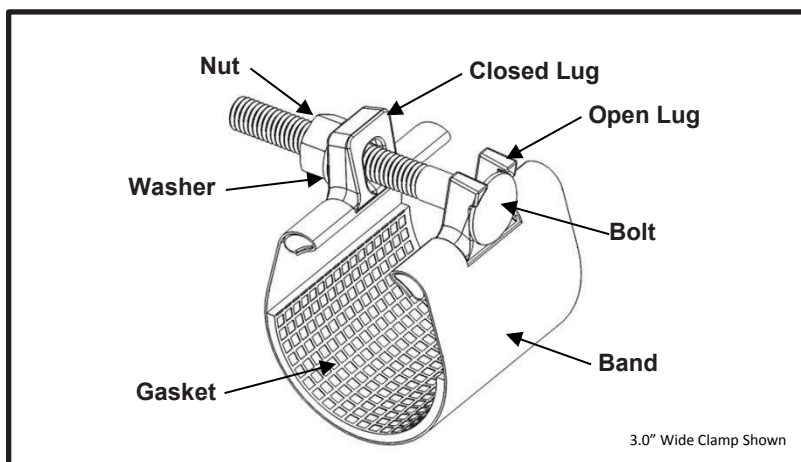


# SPECIFICATION

## REDI-CLAMP®

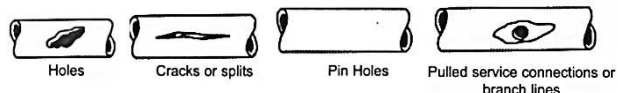
### MODEL 245G



#### APPLICATIONS

##### Typical Uses

- Repair leaks due to punctures, splits, or holes
- Examples:



##### Standard Pipe Sizes

- 0.5" to 12" nominal

##### Standard Widths

- 3.0", 6.0", 9.0", 12.0"

##### Type of Pipe

- Carbon Steel, Stainless Steel

##### Working Pressure

- 0.84" thru 4.50" O.D. = 150 psi
- 4.80" thru 8.63" O.D. = 60 psi
- 10.00" thru 12.75" O.D. = 35 psi

*Ratings depend on type of pipe, type of repair, pipe diameter, service conditions, and installation workmanship*

#### MATERIALS

##### Band

- Type 304 Stainless Steel per ASTM A240
- Band Thickness: 24 gauge thick for clamps 2.88" diameter and smaller  
22 gauge thick for clamps 3.00" diameter and larger
- Formed to pipe O.D. and secured to lug body
- Double band supplied on nominal pipe sizes 10" and larger

##### Lug

- Cast using Ductile Iron 65-45-12 per ASTM A536
- Flexi-Coat® fusion bonded epoxy finish
- Designed for drop in replaceable bolts
- One open loop lug and one closed loop lug. The bolts do not have to be removed to install clamp, preventing lost hardware
- Remaining opening(s) have closed-closed loop lugs securing clamp sections together for ease of installation
- Precision cast with contoured surface to equalize clamping pressures around the pipe

# SPECIFICATION

## REDI-CLAMP®

### MODEL 245G

- **Gasket**
  - Nitrile (Buna-N) per ASTM D2000
  - Gasket Thickness: 0.125"
  - Compounded to resist oil, natural gas, acids, alkalies, most (aliphatic) hydrocarbon fluids, and many other chemicals
  - Temperature range: -20°F to +180°F
  - Finely gridded surface conform to irregularities on the pipe surface and provide superior sealing on rough or pitted areas
  - Gasket spans approximately 180° of the clamp diameter and is positioned to provide superior sealing at the point of leak
- **Bolt**
  - Material: 0.5" – 1.5" nominal pipe size = Carbon Steel SAE J249 GR2  
2.0" – 12.0" nominal pipe size = Carbon Steel SAE J249 GR5
  - Fe/Zn coated per ASTM F1941-10
  - Size: 0.5" – 1.5" nominal pipe size = 3/8"-16UNC x 3.00" long, Round Head Square Neck  
2.0" – 5.0" nominal pipe size = 7/16"-14UNC x 4.00" long, Round Head Square Neck  
6.0" – 12.0" nominal pipe size = 7/16"-14UNC x 5.00" long, Round Head Square Neck
  - Rolled threads for improved physical characteristics, greater thread accuracy, and smooth surface finish
  - Drop in replaceable bolts
- **Nut**
  - Carbon Steel per ASTM A307
  - Fe/Zn coated per ASTM F1941-10
  - Size: 0.5" – 1.5" nominal pipe size = 3/8"-16UNC Heavy Hex  
2.0" – 12.0" nominal pipe size = 7/16"-14UNC Heavy Hex
- **Washer**
  - Carbon Steel per ASTM F844
  - Fe/Zn coated per ASTM F1941-10
  - Size: 7/16" Type A Plain

#### LISTINGS

- Meets applicable D.O.T. Title 49 Section 192 regulations

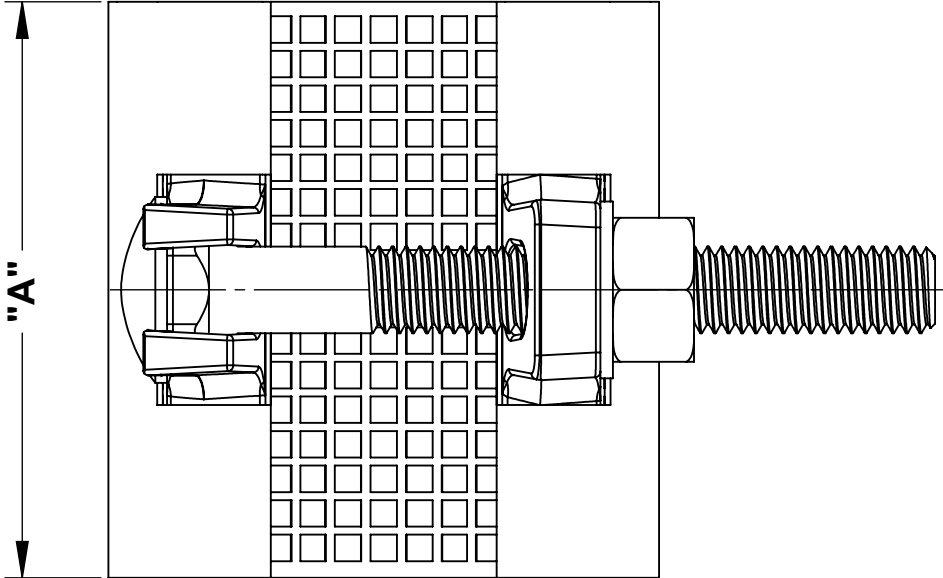
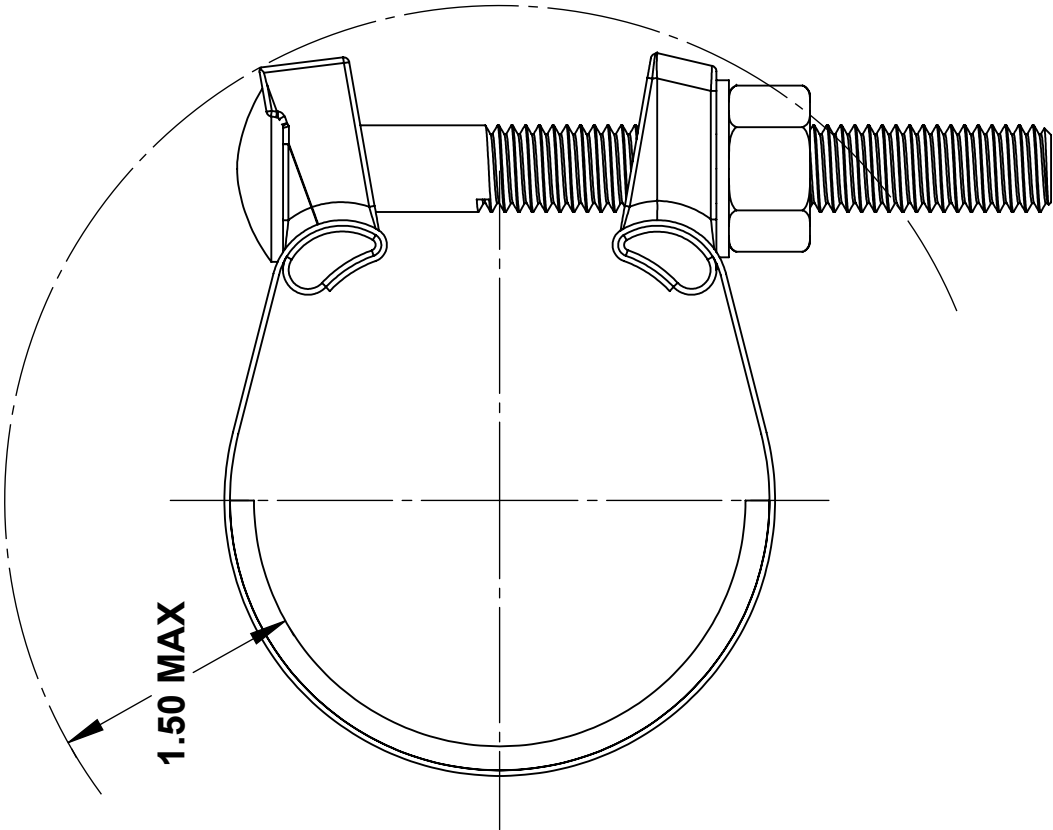
#### OPTIONS

- Type 316 Stainless Steel band
- Type 304 Stainless Steel hardware with fluoropolymer coated nuts to prevent galling
- Type 316 Stainless Steel hardware with fluoropolymer coated nuts to prevent galling
- Alternative gasket material (e.g. Viton, EPDM, etc.)
- 0.25" thick gasket
- Lug to lug gasket span
- Smooth face gasket

#### NOTES

- This product **does not** restrain the pipe from pulling out of the fitting
- Redi-Clamp® and Flexi-Coat® are registered trademarks of Smith-Blair Inc.
- These product specifications were correct at the time of publication and are subject to change without notice
- See the Smith-Blair® web site for part numbers and ordering information
- See the Smith-Blair® web site for warranty information
- See the Smith-Blair® web site for corrosion warnings

30 Globe Ave, Texarkana, AR 71854  
Ph: 870-773-5127 • Fax: 870-773-5212  
Toll-Free Numbers: Ph: 800-643-9705 • Fax: 800-648-6792



NOMINAL PIPE SIZE	A	HARDWARE		SOCKET SIZE
		QUANTITY	SIZE	
0.5 - 1.50	3.00	1	3/8" x 3"	1 1/16"
	6.00	2		
2 - 5	3.00	1	7/16" x 4"	3/4"
	6.00	2		
	9.00	3		
	12.00	4		
6 - 8	3.00	1	7/16" x 5"	
	6.00	2		
	9.00	3		
	12.00	4		
10 - 12	3.00	2	7/16" x 5"	
	6.00	4		
	9.00	6		
	12.00	8		

- NOTES:
- SEE SMITH-BLAIR CATALOG FOR AVAILABLE PIPE DIAMETER AND WIDTH COMBINATIONS AS SOME COMBINATIONS ARE NOT AVAILABLE
  - 3.00" WIDE CLAMP SHOWN OTHER SIZES SIMILAR
  - 10" - 12" CLAMPS INCORPORATE A TWO PIECE DESIGN USING CLOSED-CLOSED LUGS ON SECOND OPENING

TOLERANCES U.N.O. XX= +.03 XXX= +.015 FRACTIONS= ANGLES=+1° MACH. FIN=	NOTES: REMOVE BURRS AND SHARP EDGES DO NOT SCALE DWG.	APP'D	DATE
		CK'D	DATE
	SCALE: N/A	DRN	DATE

TITLE <b>SPECIFICATION</b> <b>REDI-CLAMP®</b> <b>MODEL 245G</b>			
SMITH-BLAIR, Inc. TEXARKANA, ARKANSAS		P/N N/A	
SPEC_245G.DRW		1 OF 1 SHEET	3/16/16 REV.