

# SPECIFICATION SUBMITTAL

**ACCOR**<sup>TM</sup> TECHNOLOGY, INC.

1800 112th Avenue NE Suite 210W  
Bellevue, WA 98004

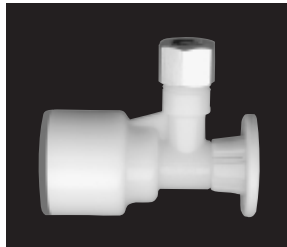
1-800-447-5848

Project \_\_\_\_\_

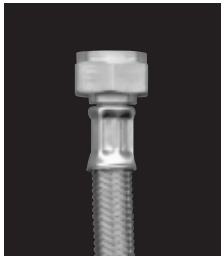
Architect/Engineer \_\_\_\_\_

Builder/Developer \_\_\_\_\_

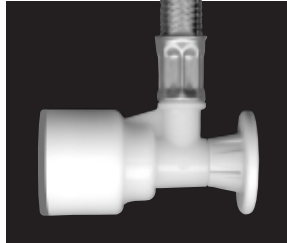
Plumbing Contractor \_\_\_\_\_



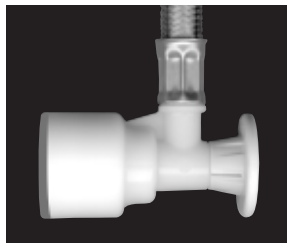
P05-X



P05-LS-X



P05-CS-X



## FlowTite<sup>TM</sup> Angle Stop Valves and Valve/Riser System

for copper, CPVC and PEX pipe

Model Number	Description (All 'X' model valves have gray inlet)
<input type="checkbox"/> P053,2-X	PushON <sup>TM</sup> Valve 1/2" nom. X 3/8" or 1/4" compression outlet.
<input type="checkbox"/> P05-LS-X	PushON Valve with factory applied flexible stainless steel High Performance <sup>TM</sup> connector for faucets and dishwashers.
<input type="checkbox"/> P05-CS-X	PushON Valve with factory applied flexible stainless steel High Performance connector for toilets.

### Design Criteria

- |   |   |
|---|---|
| • Engineered for leak-free performance.         | • Eliminates field crimps, tools, copper stub outs, solder and glue.  |
| • Superior design margin of safety.             | • Valve exceeds 1000 psi hydrostatic test limits on copper and CPVC and 800 psi on PEX pipe.                        |
| • Long term owner protection.                   | • Written 10 year labor and material warranty.  |
| • Long term field performance.                  | • <b>FlowTite</b> technology has over 10 years of in place performance on thousands of projects throughout the U.S. |
| • Reduced maintenance costs.                    | • Valves and one piece units are removable.   |
| • Clean white look with stainless steel crimps. | • Non-corrosive no rust look to fit any interior.   |
| • NSF 61/9 Listed and labeled.                  | • Certified lead free and health safe.  |

### Codes/Standards

#### Listings:

- NSF 61/9 Listed
- IAPMO Listed File 2657 (UPC)
- BOCA/ESI report 97-54 (IPC)
- SBCCI report 9452B (SPC, IPC)
- Warnock Hersey - CAN
- Other City, County and State approvals

#### Manufactured in accordance with:

- ANSI/ NSF 61/9 Certified
- ANSI/ ASME A112.18.1M
- CAN/CSA B125
- ASTM F877 (PEX)
- ANSI/ ASME A112.18.6
- PS74-95

**Warranty: 10 years including labor** (see warranty certificate)