

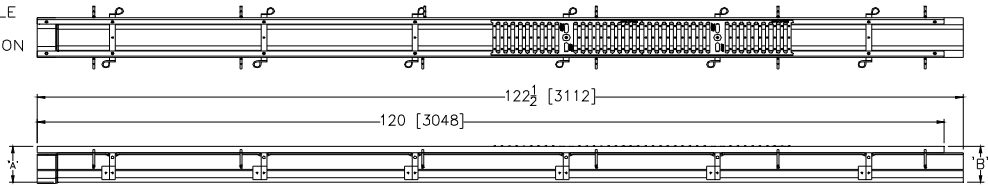
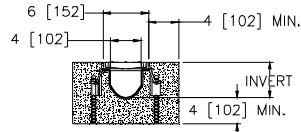


Z806

6 [152] WIDE REVEAL FIBER REINFORCED POLYMER TRENCH DRAIN SYSTEM

Dimensional Data (inches and [mm]) are Subject to Manufacturing Tolerances and Change Without Notice

SPECIFYING ENGINEER IS RESPONSIBLE FOR CONCRETE ENCASEMENT AND REINFORCING BASED UPON APPLICATION AND LOCAL CODES



NOTE: + Actual Channel length is 122 1/2 [3112] to allow for overlap.

ENGINEERING SPECIFICATION: Zurn Z806

Channels shall be 120 [3048] long, 6 [152] wide and have a 4 [102] throat. Modular channel sections shall be made of Fiber Reinforced Polymer (FRP). Shall have a positive mechanical connection between channel sections that will not separate during the installation and shall mechanically lock into the concrete surround every 10 [254]. Channels shall weigh less than 2.31 lbs.[1.05kg] per linear foot, have a smooth, 1-1/2 [38] radiused self cleaning bottom with a Manning's coefficient of .009 and .75% or neutral 0% built in slope. Shall be provided with standard DGC grates that lock down to frame. Zurn 6 [152] wide reveal Ductile Iron Slotted Grate conforming to ASTM specification A536-84, Grade 80-55-06. Ductile Iron grate is rated class C per the DIN EN1433 top load classifications. Supplied in 20 [508] nominal lengths with 1/2 [13] wide slots, and 3/4 [19] bearing depth. Grate has an open area of 18.57 sq. in per ft. [39,307 sq. mm per meter]. The 1/4 [6] thick Heavy-Duty Carbon Steel Frame Assembly conforms to ASTM specification A36 with 12-4 [102] long concrete anchors per 120 [3048]. Grate lockdown bars are to be integral to the frame. The frame is supplied with a powder coated finish. All welds must be performed by a certified welder per ASTM standard AWS D1.1. Frames Shall be produced in the U.S.A.

PREFIX OPTIONS (Check/specify appropriate options)

- ___ Z Ten-foot Fiber Reinforced Polymer (FRP)*
- ___ ZV Ten-foot Fiber Reinforced Vinylester

SUFFIX OPTIONS (Check/specify appropriate options)

Outlet Adapters Add/Each

- ___ -E1 Closed End Cap
- ___ -E2 2 [51] No-Hub End Outlet
- ___ -E3 3 [76] No-Hub End Outlet
- ___ -E4 4 [102] No-Hub End Outlet
- ___ -E6 6 [152] No-Hub End Outlet
- ___ -U2 2 [51] No-Hub Bottom Outlet
- ___ -U3 3 [76] No-Hub Bottom Outlet
- ___ -U4 4 [102] No-Hub Bottom Outlet
- ___ -U6 6 [152] No-Hub Bottom Outlet

Frame Options

- ___ -CBF Black Acid Resistant Coated Frame
- ___ -HD Extra-Heavy-Duty Frame Assembly with Anchor Studs *

Grate Options (Load Classifications are per DIN EN1433)

- ___ -BDC Black Acid Resistant Epoxy Coated Ductile Grate - Class C
- ___ -BDE Black Acid Resistant Epoxy Coated Ductile Grate - Class E
- ___ -BG Galvanized Ductile Iron Cast Bar Grate - Class C
- ___ -DBG Ductile Iron Cast Bar Grate - Class C
- ___ -DC Ductile Iron Solid Cover - Class C
- ___ -DGC Ductile Iron Slotted Grate - Class C *
- ___ -DGE Ductile Iron Slotted Grate - Class E
- ___ -DGE-NA Ductile Iron Slotted Grate - Class E - North American
- ___ -GDC Galvanized Ductile Slotted Grate - Class C
- ___ -GDE Galvanized Ductile Slotted Grate - Class E
- ___ -GG Fiberglass Grate - Class A
- ___ -GHPD Galvanized Heel-Proof Ductile Grate - Class B
- ___ -GHPDE Galvanized Heel-Proof Ductile Grate - Class E
- ___ -HPD Heel-Proof Ductile Slotted Grate - Class B
- ___ -HPDE Heel-Proof Ductile Slotted Grate - Class E
- ___ -HPP Heel-Proof Polyethylene Grate - Class A
- ___ -LD Ductile Iron Longitudinal Slotted Grate - Class B
- ___ -RFG Reinforced Galvanized Steel Slotted Grate - Class B
- ___ -RPG Reinforced Galvanized Perforated Grate - Class B
- ___ -RFGC Reinforced Slotted Galvanized Grate - Class C
- ___ -RFSC Reinforced Slotted Stainless Steel Grate - Class C
- ___ -RPGC Reinforced Perforated Galvanized Grate - Class C
- ___ -RPGR Reinforced Galvanized Perforated Reverse Punch Anti-Slip ADA Grate - Class C
- ___ -RPGRC Reinforced Perforated Galvanized Reverse Punch Grate -Class C
- ___ -RPSC Reinforced Perforated Stainless Steel Grate - Class C
- ___ -RPSR Reinforced Stainless Steel Perforated Reverse Punch Anti-Slip ADA Grate - Class B
- ___ -RPSRC Reinforced Perforated Stainless Steel Reverse Punch Grate - Class C

Decorative Grate Options (Load Classifications are per DIN EN1433)

- ___ -BCD Bronze Circular Decorative Grate - Class A
- ___ -BDD Bronze Diagonal Decorative Grate - Class A
- ___ -DCD Ductile Iron Circular Decorative Grate - Class C
- ___ -DDD Ductile Iron Diagonal Decorative Grate - Class A
- ___ -DOG Ductile Iron Decorative Grate - Class A
- ___ -DTW Ductile Iron Tidal Wave Grate - Class C
- ___ -DWV Ductile Wave Decorative Grate - Class A
- ___ -HPB Heel-Proof Bronze Slotted Grate - Class A
- ___ -HPS Heel-Proof Stainless Steel Slotted Grate - Class A
- ___ -SBG Stainless Steel Bar Grate - Class E

* Regularly furnished unless otherwise specified.

| Trench No. | 'A' Shallow Inv. | 'B' Deep Inv. | Flow | | |
|------------|------------------|---------------|-------|-------|-------|
| | | | (cfs) | (gpm) | (lps) |
| 1001 | 3.50 [89] | 4.40 [112] | .196 | 88 | 6 |
| 1002 | 4.40 [112] | 5.30 [135] | .296 | 133 | 8 |
| 1002N | 5.30 [135] | 5.30 [135] | - | - | - |
| 1003 | 5.30 [135] | 6.20 [157] | .397 | 178 | 11 |
| 1004 | 6.20 [157] | 7.10 [180] | .501 | 225 | 14 |
| 1004N | 7.10 [180] | 7.10 [180] | - | - | - |
| 1005 | 7.10 [165] | 8.00 [203] | .604 | 271 | 17 |
| 1006 | 8.00 [203] | 8.90 [203] | .711 | 319 | 20 |
| 1007 | 8.90 [226] | 9.80 [249] | .816 | 366 | 23 |
| 1008 | 9.80 [249] | 10.70 [272] | .922 | 414 | 26 |
| 1008N | 10.70 [272] | 10.70 [272] | - | - | - |
| 1009 | 10.70 [272] | 11.60 [295] | 1.029 | 462 | 29 |
| 1010 | 11.60 [295] | 12.50 [318] | 1.136 | 510 | 32 |

- ___ -SCD Stainless Steel Circular Decorative Grate - Class B
- ___ -SDD Stainless Steel Diagonal Decorative Grate - Class B
- ___ -SMG Stainless Steel Mesh Grate - Class B
- ___ -SOG Stainless Steel Decorative Grate - Class B

Miscellaneous Options

- ___ -DB Bottom Dome Strainer
- ___ -JC Joint Connector
- ___ -RC Rebar Clip (Set of 2)
- ___ -SW 8.1 [206] High Sidewall Extension Adapter (Per Pair)
- ___ -VP Vandal-Proof Lockdown

MADE in the U.S.A. (Load Classifications are per DIN EN1433)

- ___ -AWG Aluminum Wire Grate - Class A
- ___ -BDE-USA Black Acid Resistant Epoxy Coated Ductile Grate - Class E
- ___ -DCE-USA Ductile Iron Solid Cover - Class E
- ___ -DGC-USA Ductile Iron Slotted Grate - Class C
- ___ -DGE-USA Ductile Iron Slotted Grate - Class E
- ___ -FG Fabricated Galvanized Steel Slotted Grate - Class A
- ___ -FS Fabricated Stainless Steel Slotted Grate - Class A
- ___ -GDC-USA Galvanized Ductile Slotted Grate - Class C
- ___ -GDE-USA Galvanized Ductile Slotted Grate - Class E
- ___ -GHPDE-USA Galvanized Heel-Proof Grate - Class E
- ___ -GMG Galvanized Steel Mesh Grate - Class B
- ___ -HPDE-USA Heel-Proof Ductile Slotted Grate - Class E
- ___ -PG Perforated Galvanized Steel Grate - Class A
- ___ -PGR Galvanized Perforated Reverse Punch Anti-Slip ADA Grate - Class A
- ___ -PPC Plastic Perforated Grate - Class C
- ___ -PS Perforated Stainless Steel Grate - Class A
- ___ -PSR Stainless Steel Perforated Reverse Punch Anti-Slip Grate - Class A

Decorative MADE in the U.S.A. (Load Classifications are per DIN EN1433)

- ___ -BZ Bronze Decorative Grate - Class A
- ___ -NBZ Nickel Bronze Decorative Grate - Class A
- ___ -PDE-USA Ductile Iron Perforated ADA Grate - Class E
- ___ -PSR Stainless Steel Perforated Reverse Punch Anti-Slip Grate - Class A
- ___ -SWG Stainless Steel Wire Grate - Class A

Zurn Industries, LLC | Specification Drainage Operation
1801 Pittsburgh Avenue, Erie, PA U.S.A. 16502 · Ph. 855-663-9876, Fax 814-454-7929

In Canada | Zurn Industries Limited
3544 Nashua Drive, Mississauga, Ontario L4V 1L2 · Ph. 905-405-8272, Fax 905-405-1292

www.zurn.com

Rev. AD
Date: 07/18/14
C.N. No. 131244
Prod. | Dwg. No. Z806