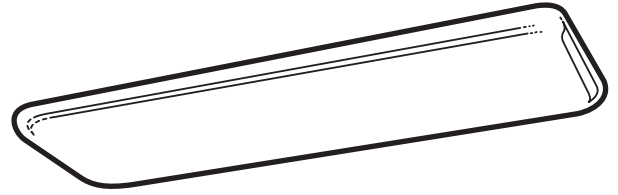


TECHNICAL SPECIFICATIONS

SMC
Cloud

CATALOG NUMBER _____
TYPE _____
DATE _____
PREPARED BY _____
PROJECT _____



HOUSING: Die-formed heavy gauge steel with high-gloss, baked white enamel finish over rust inhibiting phosphate coat.

SHIELDING: Frameless white acrylic diffuser with D.R. for added durability and even efficient illumination on SMC and SMCLP units. SMCLP shielding is only 3 1/2" deep. SMCW model uses brass caps to hold diffuser in place.

ELECTRICAL: Fully wired for UNV 120-277V, 50-60Hz operation with thermally protected, automatic resetting Class P, sound rated A ballast as standard unless otherwise specified. UL listed.

MOUNTING: SMC and SMCLP (ceiling) and SMCW (wall).

SMC Series Ordering Information

Series	# Lamps	Lamps	ELS Options***
SMC = Cloud	2	17 = 17W 24" T8**	ELS1 = Emergency Lighting (low lumens)
SMCW = Wall Mini Cloud	3	20 = 20W 24" T12	ELS2 = Emergency Lighting (medium lumens)
(2 lamp only)	4	32 = 32W 48" T8	ELS3 = Emergency Lighting (high lumens)
SMCLP = Low Profile Cloud*		40 = 34 or 40W 48" T12	
		54 = 54W T5HO	

*Low Profile available in 48" electronic T8 only.

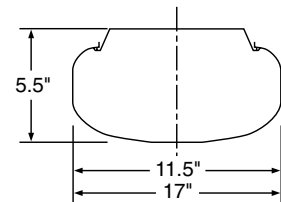
**SMCW Only

***SMCLP 3-lamp units require low profile emergency battery packs.

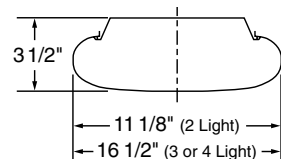
Ballast	Voltage
B5 = Electronic T12	UNV = 120-277V
B11 = Electronic T8	120 = 120V
B11HP(x) = HPT8*	277 = 277V
B22 = LPF T8/T12	

*CEE listed T8; specify (L)ow, (N)ormal, or (H)igh ballast factor. Contact factory for NEMA Premium.

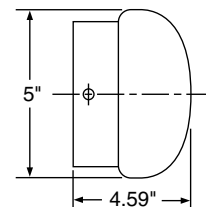
Dimensions



SMC fixtures are available in 28" and 52" models.



SMCLP fixtures, available in 52" length only, are 2/3 the depth of traditional clouds.



SMCW fixtures are available in 27", 39" and 51" models.