

For Residential and Commercial Applications

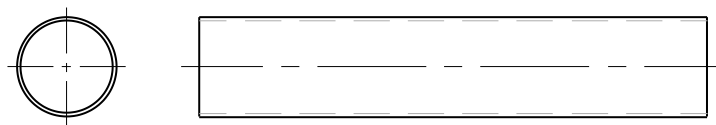
Job Name		Engineer / Architect	
Job Location		Wholesaler	
Submittal Date		Contractor	

8489 C / 8491 C Chrome Plated Brass Cover Tube

Uses: Cover tube for 1/2" nom copper tube.

Design Features:

- **Protects** the pipe from environmental conditions
- **Transitions** a supply connection seamlessly



MATERIAL SPECIFICATIONS

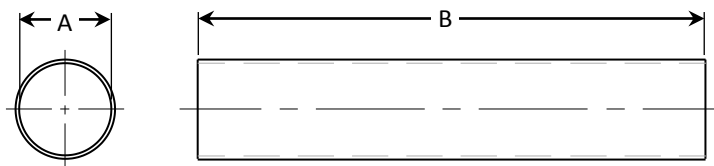
Tube	Copper, chrome-plated
-------------	-----------------------

Part Listing:

- | | |
|---------------------------------|---|
| <input type="checkbox"/> 8489 C | 3-1/2" length cover tube for 1/2" nom copper tube |
| <input type="checkbox"/> 8491 C | 36" length cover tube for 1/2" nom copper tube |

PART DIMENSIONS (Inches)

Model	DIA. A	DIM. B	Wall
8489 C	.64	3.50	.022
8491 C	.64	36.00	.022



This specification and all information contained herein is the confidential and exclusive property of BrassCraft Manufacturing, and shall not be disclosed to others without the written consent of BrassCraft Mfg. This specification must be returned to BrassCraft Mfg if requested.

BrassCraft®