



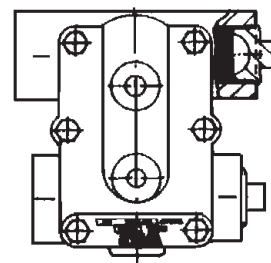
Accumulated dirt and sludge can be removed by "blowing down" through the drain in the bottom of trap. The trap mechanism should be inspected periodically and all dirt removed from working parts. Worn parts must be replaced.

Maintenance:

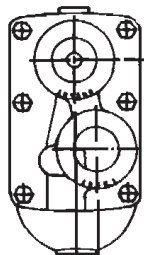
1. Install below and close to equipment being drained, avoid long lengths of horizontal piping ahead of trap.
2. Pitch all horizontal inlet lines toward the stream trap to help eliminate potential water hammer problems.
3. Pipe plugs included separately must be placed in the two unused connections on all 3/4", 1" and 1 1/4" WFT-15, WFT-30 traps, see "Piping Combination".
4. A dirt pocket and strainer (with blow down) should always be provided ahead of trap.
5. Union fittings and shutoff valves should be installed on both sides of trap for ease of servicing and trap testing.

Installation:

1 1/4" WFT-15 & WFT-30
 All 3/4", 1"



All 1 1/2", 2"
 1 1/4" WFT-75 & WFT-125



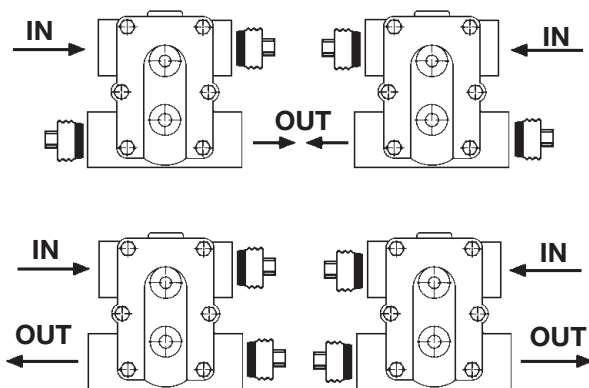
Traps should be installed in an accessible position and location for easy servicing. The maximum differential pressure (ΔP) stamped on product name plate must be greater than the maximum pressure differential across the trap. Be sure to install trap straight, in a level position to ensure proper operation.

Installation Instructions:

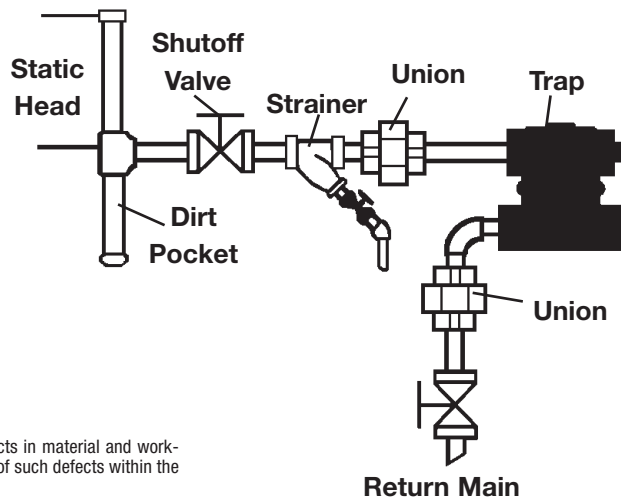
Series WFT Float & Thermostatic Steam Traps

IS-WFT

Piping Combinations



Typical Installation



Limited Warranty: Watts Regulator Co. (the "Company") warrants each product to be free from defects in material and workmanship under normal usage for a period of one year from the date of original shipment. In the event of such defects within the warranty period, the Company will, at its option, replace or recondition the product without charge.

THE WARRANTY SET FORTH HEREIN IS GIVEN EXPRESSLY AND IS THE ONLY WARRANTY GIVEN BY THE COMPANY WITH RESPECT TO THE PRODUCT. THE COMPANY MAKES NO OTHER WARRANTIES, EXPRESS OR IMPLIED. THE COMPANY HEREBY SPECIFICALLY DISCLAIMS ALL OTHER WARRANTIES, EXPRESS OR IMPLIED, INCLUDING BUT NOT LIMITED TO THE IMPLIED WARRANTIES OF MERCHANTABILITY AND FITNESS FOR A PARTICULAR PURPOSE.

The remedy described in the first paragraph of this warranty shall constitute the sole and exclusive remedy for breach of warranty, and the Company shall not be responsible for any incidental, special or consequential damages, including without limitation, lost profits or the cost of repairing or replacing other property which is damaged if this product does not work properly, other costs resulting from labor charges, delays, vandalism, negligence, fouling caused by foreign material, damage from adverse water conditions, chemical, or any other circumstances over which the Company has no control. This warranty shall be invalidated by any abuse, misuse, misapplication, improper installation or improper maintenance or alteration of the product.

Some States do not allow limitations on how long an implied warranty lasts, and some States do not allow the exclusion or limitation of incidental or consequential damages. Therefore the above limitations may not apply to you. This Limited Warranty gives you specific legal rights, and you may have other rights that vary from State to State. You should consult applicable state laws to determine your rights. **SO FAR AS IS CONSISTENT WITH APPLICABLE STATE LAW, ANY IMPLIED WARRANTIES THAT MAY NOT BE DISCLAIMED, INCLUDING THE IMPLIED WARRANTIES OF MERCHANTABILITY AND FITNESS FOR A PARTICULAR PURPOSE, ARE LIMITED IN DURATION TO ONE YEAR FROM THE DATE OF ORIGINAL SHIPMENT.**

CALIFORNIA PROPOSITION 65 WARNING

WARNING: This product contains chemicals known to the State of California to cause cancer and birth defects or other reproductive harm. (California law requires this warning to be given to customers in the State of California.)

For more information: www.watts.com/prop65

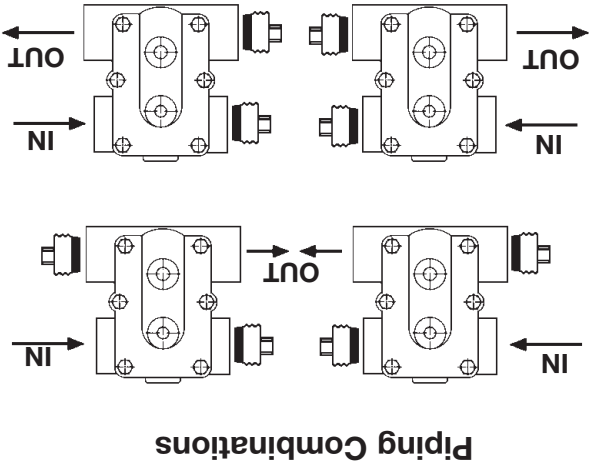
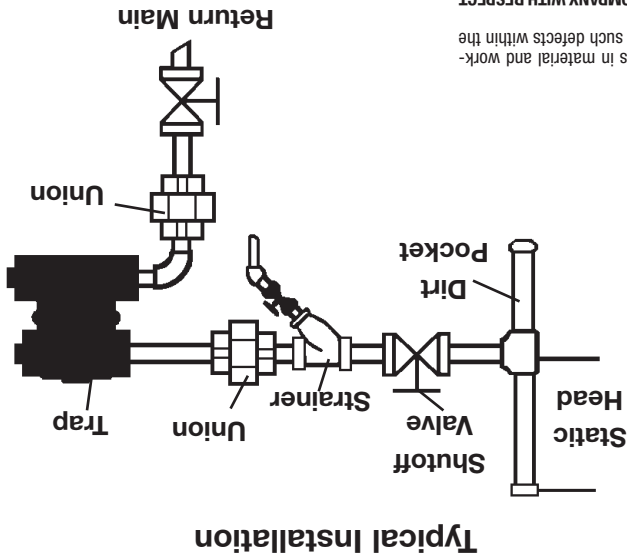
Limited Warranty: Watts Regulator Co. (the "Company") warrants each product to be free from defects in material and workmanship under normal usage for a period of one year from the date of original shipment. In the event of such defects within the warranty period, the Company will, at its option, replace or recondition the product without charge.

THE WARRANTY SET FORTH HEREIN IS GIVEN EXPRESSLY AND IS THE ONLY WARRANTY GIVEN BY THE COMPANY WITH RESPECT TO THE PRODUCT. THE COMPANY MAKES NO OTHER WARRANTIES, EXPRESS OR IMPLIED. THE COMPANY HEREBY SPECIFICALLY DISCLAIMS ALL OTHER WARRANTIES, EXPRESS OR IMPLIED, INCLUDING BUT NOT LIMITED TO THE IMPLIED WARRANTIES OF MERCHANTABILITY AND FITNESS FOR A PARTICULAR PURPOSE.

The remedy described in the first paragraph of this warranty shall constitute the sole and exclusive remedy for breach of warranty, and the Company shall not be responsible for any incidental, special or consequential damages, including without limitation, lost profits or the cost of repairing or replacing other property which is damaged if this product does not work properly, other costs resulting from labor charges, delays, vandalism, negligence, fouling caused by foreign material, damage from adverse water conditions, chemical, or any other circumstances over which the Company has no control. This warranty shall be invalidated by any abuse, misuse, misapplication, improper installation or improper maintenance or alteration of the product.

Some States do not allow an implied warranty, and some States do not allow the exclusion or limitation of incidental or consequential damages. Therefore the above limitations may not apply to you. This Limited Warranty gives you specific legal rights, and you may have other rights that vary from State to State. You should consult applicable state laws to determine your rights. **SO FAR AS IS CONSISTENT WITH APPLICABLE STATE LAW, ANY IMPLIED WARRANTIES THAT MAY NOT BE DISCLAIMED, INCLUDING THE IMPLIED WARRANTIES OF MERCHANTABILITY AND FITNESS FOR A PARTICULAR PURPOSE, ARE LIMITED IN DURATION TO ONE YEAR FROM THE DATE OF ORIGINAL SHIPMENT.**

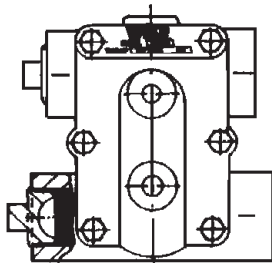
CALIFORNIA PROPOSITION 65 WARNING
 WARNING: This product contains chemicals known to the State of California to cause cancer and birth defects or other reproductive harm. (California law requires this warning to be given to customers in the State of California.)
 For more information: www.watts.com/prop65



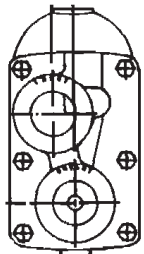
Series WFT Float & Thermostatic Steam Traps

Installation Instructions:

IS-WFT



All 3/4", 1"
 1 1/4" WFT-15 & WFT-30



All 1 1/2", 2"
 1 1/4" WFT-75 & WFT-125

Traps should be installed in an accessible position and location for easy servicing. The maximum differential pressure (ΔP) stamped on product name plate must be greater than the maximum pressure differential across the trap. Be sure to install trap straight, plumb, and in a level position to ensure proper operation.

Installation:

1. Install below and close to equipment being drained, avoid long lengths of horizontal piping ahead of trap.
2. Pitch all horizontal inlet lines toward the steam trap to help eliminate potential water hammer problems.
3. Pipe plugs included separately must be placed in the two unused connections on all 3/4", 1" and 1 1/4" WFT-15, WFT-30 traps, see "Piping Combination".
4. A dirt pocket and strainer (with blow down) should always be provided ahead of trap.
5. Union fittings and shutoff valves should be installed on both sides of trap for ease of servicing and trap testing

Maintenance:

Accumulated dirt and sludge can be removed by "blowing down" through the drain in the bottom of trap. The trap mechanism should be inspected periodically and all dirt removed from working parts. Worn parts must be replaced.

