

# Series 919, LF919

## Reduced Pressure Zone Assemblies

Sizes 1/4" – 2"

### Repair Kits

When ordering specify Ordering Code, Kit No., and Valve Size.

ORDERING CODE	KIT NO.	SIZE
---------------	---------	------

#### Total Repair Kits

LEAD FREE*	0888167	RK 919-T	1/4" - 1/2"
	0888168	RK 919-T	3/4"
	0888169	RK 919-T	1"
	0888170	RK 919-T	1 1/4" - 1 1/2"
	0888171	RK 919-T	2"

Kit consists of: relief valve repair kit, first check repair kit, second check repair kit

### Relief Valve Kits

#### Total Relief Valve Kits

LEAD FREE*	0888130	RK 919 VT	1/4" – 1/2"
	0888131	RK 919 VT	3/4" – 1"
	0888132	RK 919 VT	1 1/4" – 2"

Kit consists of: relief valve assembly, RV spring, and RV cover O-ring.

#### Relief Valve Rubber Parts Kits

LEAD FREE*	0888135	RK 919 RV	1/4" – 1/2"
	0888136	RK 919 RV	3/4" – 1"
	0888137	RK 919 RV	1 1/4" – 2"

Kit consists of: relief valve disc, RV diaphragm, RV seat O-ring and cover O-ring

#### Relief Valve Seat Kits

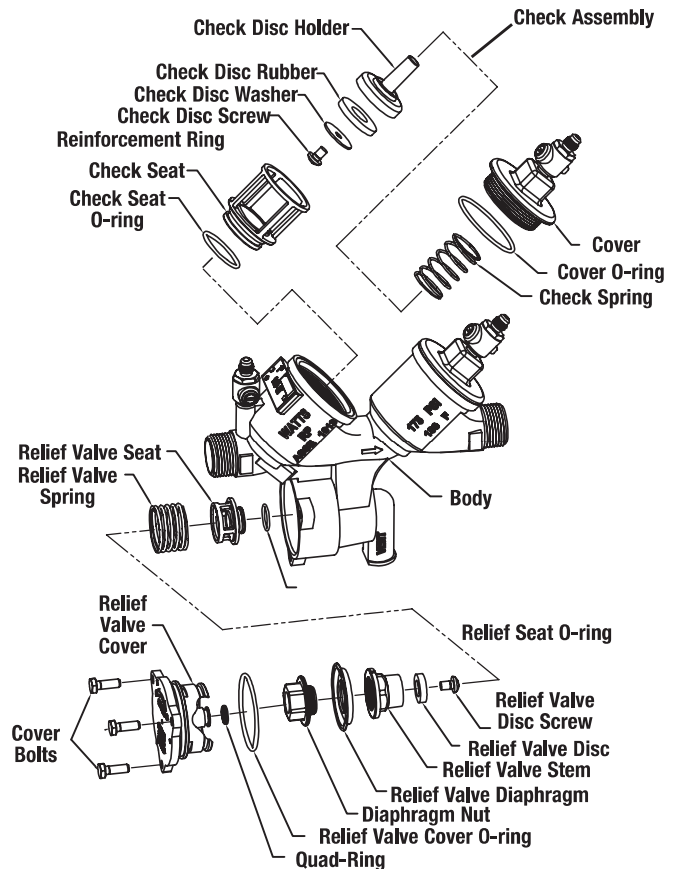
LEAD FREE*	0888150	RK 919 SV	1/4" – 1/2"
	0888151	RK 919 SV	3/4" – 1"
	0888153	RK 919 SV	1 1/4" – 2"

Kit consists of: relief valve seat, RV seat O-ring and RV cover O-ring

#### Relief Valve Cover Kits

LEAD FREE*	0888164	LFRK 919 VC	1/4" – 1/2"
	0794142	LFRK 919 VC	3/4" – 1"
	0794143	LFRK 919 VC	1 1/4" – 2"

Kit consists of: relief valve cover and cover O-ring



\*The wetted surface of this product contacted by consumable water contains less than 0.25% of lead by weight.

# Series 919, LF919

## Reduced Pressure Zone Assemblies

Sizes 1/4" – 2"

### Check Valve Kits

When ordering specify Ordering Code, Kit No., and Valve Size.

ORDERING CODE	KIT NO.	SIZE
---------------	---------	------

#### 1st Check Kits

LEAD FREE*	0888110	RK 919 CK1	1/4" – 1/2"
	0888111	RK 919 CK1	3/4"
	0888112	RK 919 CK1	1"
	0888113	RK 919 CK1	1 1/4" – 1 1/2"
	0888114	RK 919 CK1	2"

Kit consists of: check assembly, spring and cover O-ring

#### 2nd Check Kits

LEAD FREE*	0888115	RK 919 CK2	1/4" – 1/2"
	0888116	RK 919 CK2	3/4"
	0888117	RK 919 CK2	1"
	0888118	RK 919 CK2	1 1/4" – 1 1/2"
	0888119	RK 919 CK2	2"

Kit consists of: check assembly, spring and cover O-ring

#### 1st or 2nd Check Rubber Parts Kits

LEAD FREE*	0888120	RK 919 RC4	1/4" – 1/2"
	0888121	RK 919 RC4	3/4"
	0888122	RK 919 RC4	1"
	0888123	RK 919 RC4	1 1/4" – 1 1/2"
	0888124	RK 919 RC4	2"

Kit consists of: disc, seat O-ring and cover O-ring

#### Check Seat Kits

LEAD FREE*	0888125	RK 919 S	1/4" – 1/2"
	0888126	RK 919 S	3/4"
	0888127	RK 919 S	1"
	0888128	RK 919 S	1 1/4" – 1 1/2"
	0888129	RK 919 S	2"

Kit consists of: seat, seat O-ring and cover O-ring

#### Complete Valve Rubber Parts Kits

LEAD FREE*	0888140	RK 919 RT	1/4" – 1/2"
	0888141	RK 919 RT	3/4"
	0888142	RK 919 RT	1"
	0888143	RK 919 RT	1 1/4" – 1 1/2"
	0888144	RK 919 RT	2"

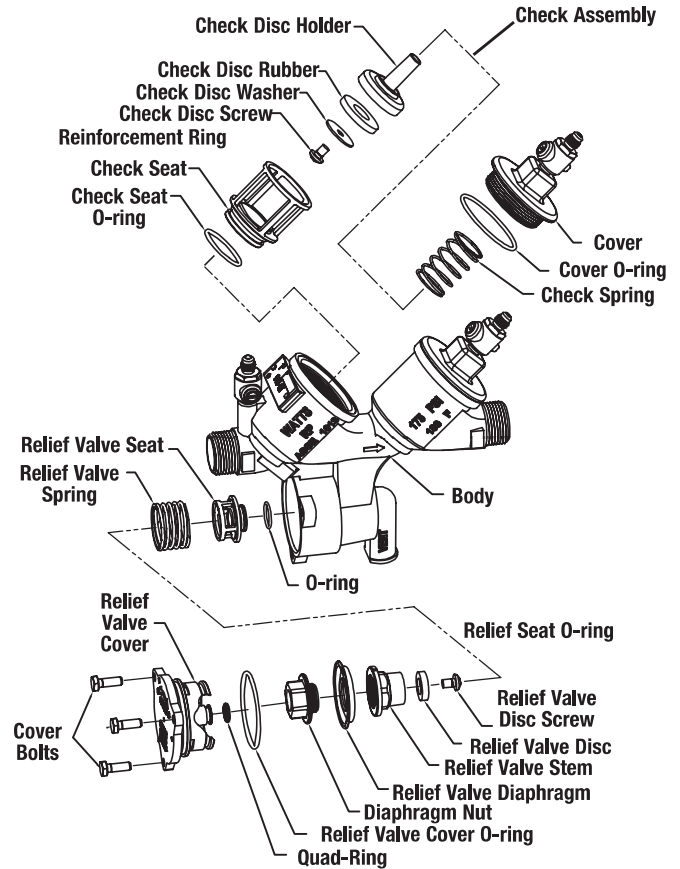
Kit consists of: 2 check seat O-rings, 2 check cover O-rings, relief valve O-ring, relief valve cover O-ring, relief valve stem O-ring

#### Check Cover Kits»

LEAD FREE*	0794144	LFRK 919 C	1/4" – 1/2"
	0794145	LFRK 919 C	3/4"
	0794146	LFRK 919 C	1"
	0794147	LFRK 919 C	1 1/4" – 1 1/2"
	0794148	LFRK 919 C	2"

Kit consists of: cover and cover O-ring

For 1/2" and 3/4" 919R10 models use 1" repair kits.



\*The wetted surface of this product contacted by consumable water contains less than 0.25% of lead by weight.