

For Commercial, Residential and Institutional Applications

Job Name _____

Contractor _____

Job Location _____

Approval _____

Engineer _____

Contractor's P.O. No. _____

Approval _____

Representative _____

Series 276H300, IWTG Hose Connection Gauges

Dial Size: 2½" (65mm)

Series 276H300 and IWTG Hose Connection Gauges are used to test water supply pressures within a distribution system. The 276H300 and IWTG gauges have red indicator hands that hold at the highest reading registered for detection of thermal expansion pressure surges. Both the 276H300 and IWTG series feature black enamel steel cases, Kostil Polymer windows, ¾" (20mm) H.T. hose connections, and copper alloy Bourdon tube sensing elements. Accuracy is ASME, Type B. Series IWTG gauges are available in a 0 to 200psi (13.8 bar) pressure rating scale. The Series 276H300 gauges are available in a 0 to 300psi (20.7 bar) pressure rating scale.



276H300

Features

- Black enamel steel case
- Kostil polymer window
- Copper alloy Bourdon sensing element
- Tin alloy welding
- ¾" (20 mm) H.T. hose connection
- ASME Type "B" accuracy

Models

276H300 – 0 - 300psi (20.7 bar) pressure rating scale

IWTG – 0 - 200psi (13.8 bar) pressure rating scale

Standards

ASME B40.100

EN ISO 9001:2008

EN ISO 14001:2004

Temperature

Working Temperature: 40°F to 140°F (4°C to 60°C)

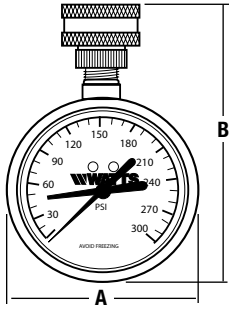
NOTICE

The information contained herein is not intended to replace the full product installation and safety information available or the experience of a trained product installer. You are required to thoroughly read all installation instructions and product safety information before beginning the installation of this product.

Materials

Case: Black enamel steel
 Window: Kostil polymer
 Sensing Element: Copper alloy Bourdon tube
 Welding: Tin alloy

Dimensions – Weights



MODEL	SCALE		SIZE (DN)	DIMENSIONS				WEIGHT	
				A		B		lbs.	kgs.
				<i>in.</i>	<i>mm</i>	<i>in.</i>	<i>mm</i>		
276H300	0 – 300psi	20.7 bar	¾" (20mm) Hose Thread	2½	64	4	10	.3	0.14
IWTG	0 – 200psi	13.8 bar	¾" (20mm) Hose Thread	2½	64	4	10	.3	0.14



A Watts Water Technologies Company

USA: Tel: (978) 689-6066 • Fax: (978) 975-8350 • Watts.com

Canada: Tel: (905) 332-4090 • Fax: (905) 332-7068 • Watts.ca

Latin America: Tel: (52) 81-1001-8600 • Fax: (52) 81-8000-7091 • Watts.com