

SPECIFICATION SUBMITTAL SHEET



Hose Bibb Lock



Test Cock Lock / Strainer Blow-off Lock



Hose Bibb Handle Lock

APPLICATION

Wilkins' Aqua-Lock is designed to limit or prevent unauthorized access to water system components. Typical Test Cock Lock applications include: backflow preventer test cocks, strainer blow-off and ball valves. Typical Hose Bibb Lock applications include: industrial, residential, vacation homes, schools, property management companies, parks and stadiums.

PREVENT

- Unauthorized access to water supply
- Vandalism
- Water theft

FEATURES

Maximum working water pressure 175 PSI
 Maximum working water temperature 140°F
 Keyed alike (quantity of 25 or more)

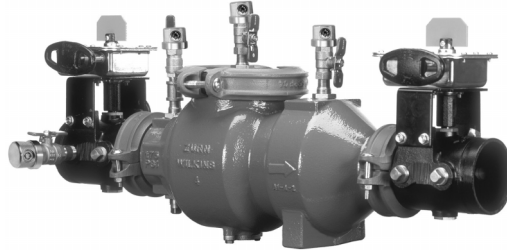
MATERIALS

Main body lock Brass
 Stainless Steel and brass

TYPICAL INSTALLATIONS



Strainer Blow-off Lock



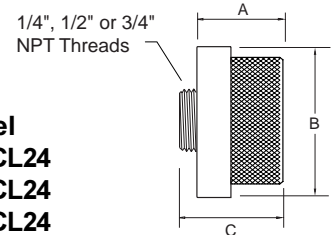
Test Cock Lock



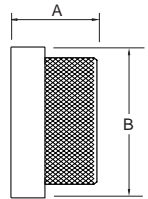
Hose Bibb Handle Lock



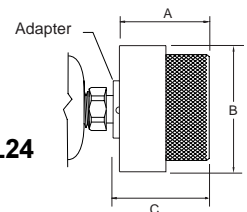
Hose Bibb Lock



Model
 14-TCL24
 12-TCL24
 34-TCL24



Model HBL24



Model HBHL24

DIMENSIONS & WEIGHTS (do not include pkg.)

Models	DIMENSIONS (approximate)							WEIGHT	
	Description	A		B		C			
		in.	mm	in.	mm	in.	mm	lbs.	kg
HBL24	Hose bibb lock	1 7/8	48	1 5/8	41	1 7/8	48	1	0.45
HBHL24	Hose bibb handle lock	1 7/8	48	1 5/8	41	2	51	1	0.45
14-TCL24	1/4" test cock lock/ strainer blow-off lock	1 7/16	37	1 1/2	38	1 3/4	45	0.75	0.34
12-TCL24	1/2" test cock lock/ strainer blow-off lock	1 7/16	37	1 3/4	45	1 9/16	40	0.75	0.34
34-TCL24	3/4" test cock lock/ strainer blow-off lock	1 7/16	37	1 3/4	45	1 9/16	40	0.75	0.34

DOCUMENT #: MIS-AQUA LOCK
 REVISION: 1/06