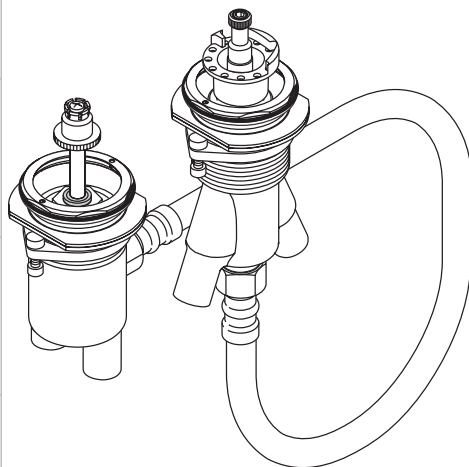


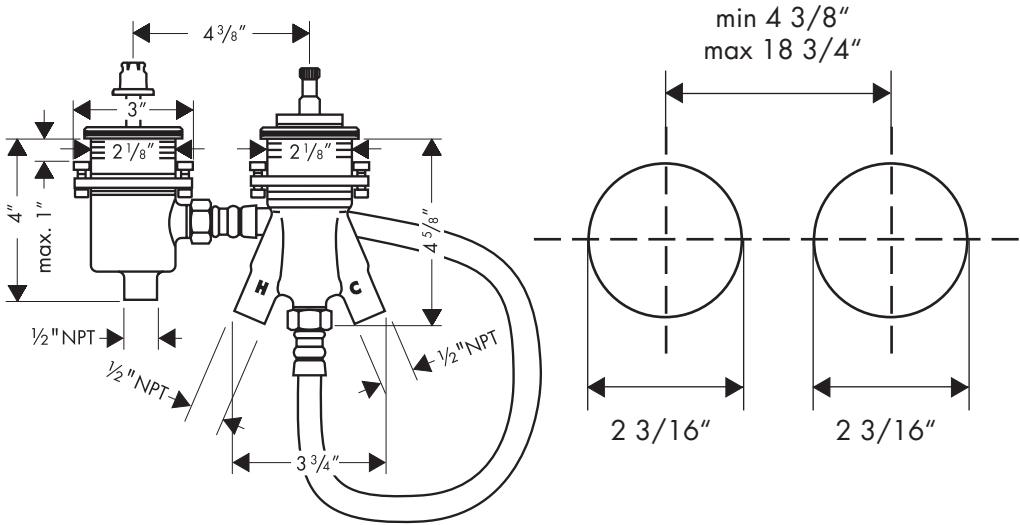
Installation Instructions / Warranty



13550181

hansgrohe

Rough, Two-Hole Thermostatic Roman Tub 13550181



Technical Specification

Operating pressure:	max. 145 psi
Recommended operating pressure:	14.5 - 72 psi
Test pressure:	232 psi
Hot water temperature:	max. 176° F*
Recommended hot water temperature:	120° F - 140° F
Connections female 1/2" NPT:	cold right - hot left
Rate of flow at 45 psi:	approx. 5.8 gpm
Hole size in mounting surface	2 3/16"
Max. mounting surface thickness	1"
Trim kit (required) sold separately	

*Please know and follow all applicable local plumbing codes when setting the temperature on the water heater.

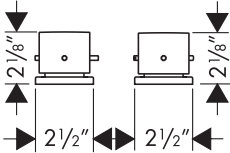
Installation Considerations

This unit incorporates a thermostatic mixing valve. The hot supply must be connected to the designated hot inlet port and the cold supply must be connected to the designated cold inlet port or the valve cannot function properly.

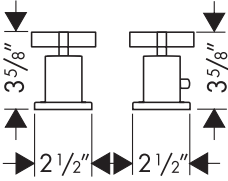
The diverter can control two different functions. If a one-function installation is desired, the two outlet ports must be tied together. DO NOT PLUG either outlet port.

Trim kits for 13550181 (not included)

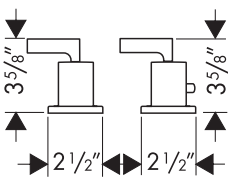
Starck
10480XX1



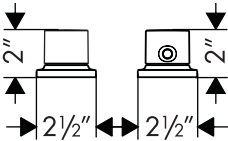
Citterio
39480XX1



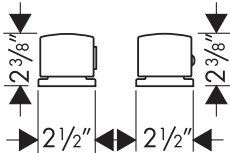
Citterio
39482XX1



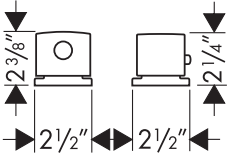
Massaud
18480001



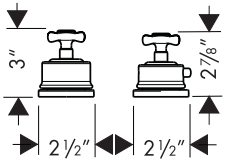
Steel
35480801



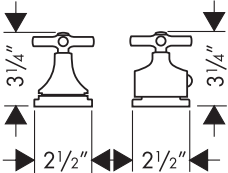
Uno
38480XX1



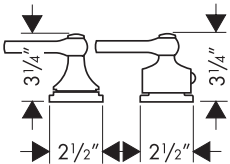
Montreux
16480XX1



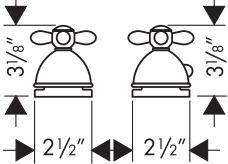
Terrano
37480XX1



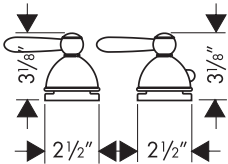
Terrano
37482XX1



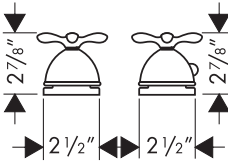
Carlton
17480XX1



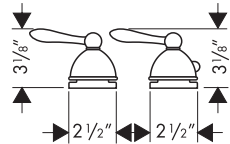
Carlton
17482XX1



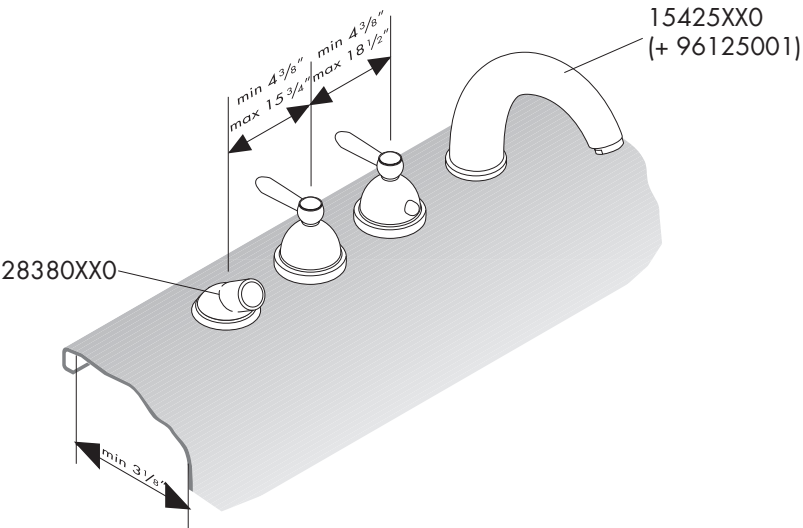
Phoenix
17580XX1



Phoenix
17582XX1



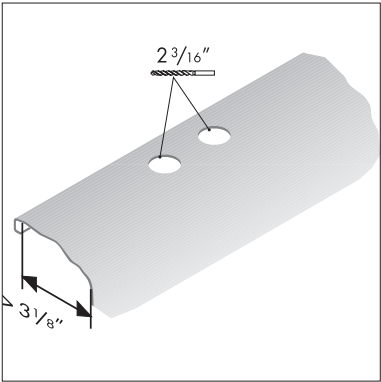
Suggested Installation



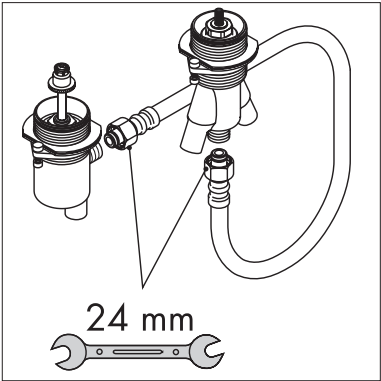
The trim kit shown, the 28380XX0 Secuflex set, the 15425XX0 spout and the 96125001 spout rough are not included with the 13550181. They are sold separately.

Installation Instructions

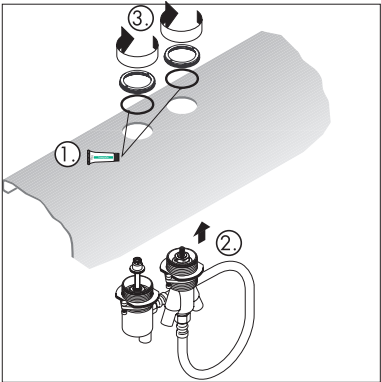
Drill two 2 3/16" holes in the mounting surface for the 13550181 rough.



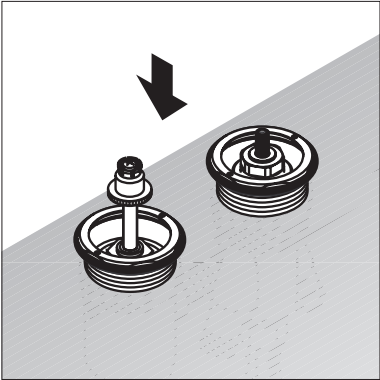
Attach the connecting hose on the outlet port of the thermostatic mixer and the inlet port on the diverter using a 24 mm wrench.



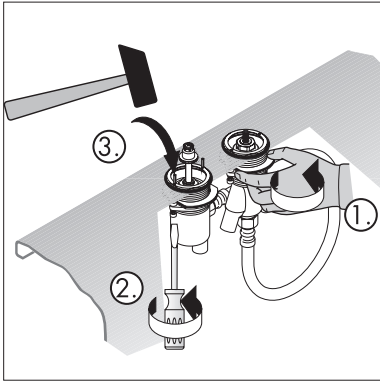
Grease the o-rings with the enclosed lubricant (1). Push the rough through the holes in the mounting surface (2). Screw the mounting rings to the thermostatic mixer and diverter



Push the valve downward so that the mounting rings rest on the mounting surface.



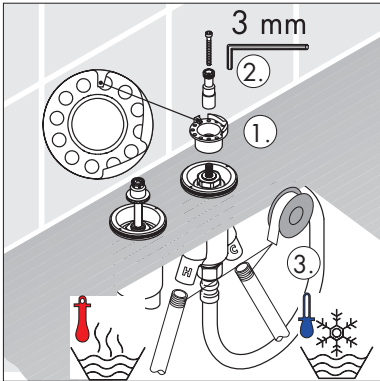
Tighten the mounting nuts on both the thermostatic mixer and diverter (1). Tighten the tensioning screws (2). Install the retaining pins (3).



Install the safety set with the stop at the rear of the valve (1). Install the stem driver and screw with the enclosed 3 mm Allen wrench (2).

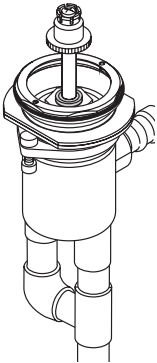
Wrap the threads on the 1/2" NPT supply lines (not included) with Teflon tape. Install the hot and cold supply lines (3).

The hot supply must be connected to the hot inlet port (marked with an H) and the cold supply must be connected to the cold inlet port (marked with a C) or the valve cannot work properly.



Special Instructions -- Single Function Installation

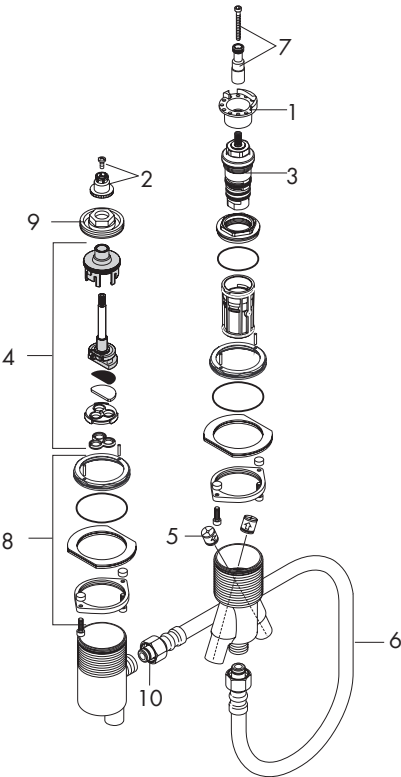
If a single function installation is desired, DO NOT plug the unused outlet port. Tie the two outlet ports together.



Troubleshooting

Problem	Possible Cause	Solution
Valve outputs both hot and cold water, but it does not mix	hot and cold supplies are reversed	reconnect supplies to proper inlets
Insufficient water volume OR loss of pressure as the water is made warmer or cooler	debris in thermostat filters	clean filters
Water temperature is erratic	faulty thermostat cartridge	replace thermostat cartridge
Water doesn't shut off completely / drips	faulty diverter	replace diverter cartridge
Hot water bleeds over into cold water supply or vice-versa	check valve in hot or cold inlet is dirty or faulty	replace check valve

Replacement Parts



1	safety set	96626000
2	handle fixing set	94184000
3	thermostat cartridge	94282000
4	diverter cartridge	96604000
5	check valve	94074000
6	connection hose	25928000
7	handle adapter	97108000
8	fixing set	96926000
9	nut	97550000
10	11 x 2 o-ring	98127000

Cleaning Recommendation for Hansgrohe Products

Modern faucetry and shower products utilize a combination of materials to comply with the needs of the market with regard to design and functionality.

To avoid damage, it is necessary to use some caution when cleaning. Damage caused by improper treatment is not covered under the Hansgrohe warranty.

Cleaning Materials for Faucets and Showers

- To remove lime scale, use only products made specifically for that purpose. Always follow the manufacturer's instructions when using.
- Do not use cleaners that contain hydrochloric, formic, acetic, or phosphoric acids, as these will cause considerable damage to finishes and to plastic components.
- Never mix cleaning materials.
- Never use cleaners containing abrasives. Do not use abrasive cleaning cloths, pads, or sponges.

Cleaning Procedures

- Clean your faucets and shower products as and when required. Regular cleaning will prevent scale buildup and water spotting.
- Follow the label instructions. Do not allow any cleaner to remain on the product for longer than necessary.
- When using spray cleaners, spray first onto a sponge or cloth – do not spray directly onto the product.
- After cleaning, rinse thoroughly with clear water to remove any cleaner residue.

Important

- Soap and shampoo residue can also cause damage to the product. Rinse well with clean water after use.
- If the surface is already damaged, harsh cleaning materials will cause further damage.

Limited Lifetime Consumer Warranty

This product has been manufactured and tested to the highest quality standards by Hansgrohe, Inc. ("Hansgrohe"). This warranty is limited to Hansgrohe products which are purchased by a consumer in the United States after March 1, 1996, and installed in either the United States or Canada.

WHO IS COVERED BY THE WARRANTY

This warranty extends to the original consumer purchaser only. This warranty is non-transferable.

WHAT IS COVERED BY THE WARRANTY

This warranty covers only your Hansgrohe manufactured product. Hansgrohe warrants this product against defects in material or workmanship as follows: Hansgrohe will repair at no charge for parts only or, at its option, replace any product or part of the product that proves defective because of improper workmanship and/or material, under normal installation, use, service and maintenance. If Hansgrohe is unable to provide a replacement and repair is not practical or cannot be timely made, Hansgrohe may elect to refund the purchase price in exchange for the return of the product.

LENGTH OF WARRANTY

Replacement or repaired parts of products will be covered for the term of this warranty as stated in the following two sentences. If you are a consumer who purchased the product for use primarily for personal, family, or household purposes, this warranty extends for as long as you own the product and the home in which the product is originally installed. If you purchased the product for use primarily for any other purpose, including, without limitation, a commercial purpose, this warranty extends only (i) for 1 year, with respect to Hansgrohe and Commercial products, and (ii) for 5 years, with respect to AXOR products.

THIS WARRANTY DOES NOT COVER, AND HANSGROHE WILL NOT PAY FOR:

- A. Conditions, malfunctions or damage not resulting from defects in material or workmanship.
- B. Conditions, malfunctions or damage resulting from (1) normal wear and tear, improper installation, improper maintenance, misuse, abuse, negligence, accident or alteration, or (2) the use of abrasive or caustic cleaning agents or "no-rinse" cleaning products, or the use of the product in any manner contrary to the product instructions. (3) Conditions in the home such as excessive water pressure or corrosion.
- C. Labor or other expenses for the disconnection, deinstallation, or return of the product for warranty service, or for installation or reinstallation of the product (including but not limited to proper packaging and shipping costs), or for installation or reinstallation of the product.
- D. Accessories, connected materials and products, or related products not manufactured by Hansgrohe.

TO OBTAIN WARRANTY PARTS OR INFORMATION

Contact your Hansgrohe retailer, or contact Technical Service at:

Hansgrohe Inc.
1492 Bluegrass Lakes Parkway
Alpharetta GA 30004
Toll-free (800) 334-0455.

In requesting warranty service, you will need to provide

- 1. The sales receipt or other evidence of the date and place of purchase.
- 2. A description of the problem.
- 3. Delivery of the product or the defective part, postage prepaid and carefully packed and insured, to Hansgrohe Inc.
1492 Bluegrass Lakes Parkway, Alpharetta, Georgia 30004, Attention: Technical Service, if required by Hansgrohe.

When warranty service is completed, any repaired or replacement product or part will be returned to you postage prepaid.

EXCLUSIONS AND LIMITATIONS

REPAIR OR REPLACEMENT (OR, IN LIMITED CIRCUMSTANCES, REFUND OF THE PURCHASE PRICE) AS PROVIDED UNDER THIS WARRANTY IS THE EXCLUSIVE REMEDY OF THE PURCHASER. HANSGROHE NEITHER ASSUMES NOR AUTHORIZES ANY PERSON TO CREATE FOR IT ANY OBLIGATION OR LIABILITY IN CONNECTION WITH THIS PRODUCT.

HANSGROHE SHALL NOT BE LIABLE TO PURCHASER OR ANY PERSON FOR ANY INCIDENTAL, SPECIAL, OR CONSEQUENTIAL DAMAGES, ARISING OUT OF BREACH OF THIS WARRANTY OR ANY IMPLIED WARRANTY (INCLUDING MERCHANTABILITY).

Some States do not allow the exclusion or limitation of incidental or consequential damages, so the above limitation or exclusion may not apply to you. This warranty gives you specific legal rights, and you may have other rights which vary from State to State. You may be required by law to give us a reasonable opportunity to correct or cure any failure to comply before you can bring any action in court against us under the Magnuson-Moss Warranty Act.

PRODUCT INSTRUCTIONS AND QUESTIONS

Upon purchase or prior to installation, please carefully inspect your Hansgrohe product for any damage or visible defect. Prior to installing, always carefully study the enclosed instructions on the proper installation and the care and maintenance of the product. If you have questions at any time about the use, installation, or performance of your Hansgrohe product, or this warranty, please call or write to us or call us toll-free at 800 334 0455.

hansgrohe

Hansgrohe, Inc. • 1490 Bluegrass Lakes Parkway • Alpharetta, GA 30004
Tel. 770 360-9880 • Fax 770 360 9887

www.hansgrohe-USA.com