



INSTALLATION, OPERATION & MAINTENANCE INSTRUCTIONS

1455 Kleppe Lane ♦ Sparks, NV 89431-6467 ♦ (775) 359-4712 ♦ Fax (775) 359-7424
E-mail: haws@hawsco.com ♦ website: www.hawsco.com

No. 2077070(23)

Model 3150 Drinking Fountain

NOTE TO INSTALLER: Please leave this information with the Maintenance Department.

LIMITED WARRANTY

HAWS warrants that this specific product is guaranteed against defective material or poor workmanship for a period of **one year from date of shipment**. HAWS liability under this warranty shall be discharged by furnishing without charge F.O.B. HAWS Factory any goods, or part thereof, which shall appear to the Company upon inspection to be of defective material or not of first class workmanship, provided that claim is made in writing to Haws within a reasonable period after receipt of the product. Where claims for defects are made, the defective part or parts shall be delivered to the Company, prepaid, for inspection. HAWS will not be liable for the cost of repairs, alterations or replacements, or for any expense connected therewith made by the owner or his agents, except upon written authority from HAWS, Sparks, Nevada. HAWS will not be liable for any damages caused by defective materials or poor workmanship, except for replacements, as provided above. Buyer agrees that HAWS shall not be liable for general, special, or consequential damages claimed to arise under the contract of sale. The drinking fountain manufactured by HAWS is warranted to function if installation and maintenance instructions provided are adhered to. The units also must be used for the purpose for which they were intended.

**NO OTHER WARRANTIES EXPRESSED OR IMPLIED ARE AUTHORIZED,
PROVIDED OR GIVEN BY HAWS.**

**SHOULD YOU EXPERIENCE DIFFICULTY WITH THE INSTALLATION OF THIS
MODEL PLEASE CALL:**

TECHNICAL SUPPORT: 1-800-766-5612

FOR CUSTOMER SERVICE: 1-888-640-4297

RECOMMENDED TOOLS: Hack saw, pipe joint sealant, screwdriver, level, 12" adjustable wrench, 10" pipe wrench, 5/64" hex key wrench, 9/16", 1/2", 7/16" socket wrench or open end wrench.

LOCATION OF UNIT: The Model 3150 Drinking Fountain is a wheelchair accessible drinking water facility. The height dimensions shown, meet current ADA requirements. When installing this unit, local, state or federal codes should be adhered to. If height other than shown is required, then dimensions must be adjusted accordingly.

SUPPLY LINE: The minimum recommended line size is 1/2"IPS with 30-90 psi (2-6 ATM) flowing pressure. Where sediment or mineral content is a problem, an inlet filter is recommended.

PLUMBING CONNECTIONS: Inlet is 1/4" IPS male fitting. Waste outlet is female 1-1/2" Slip PVC.

MAINTENANCE: Periodically clean the strainer. Refer to 5874SS Valve Operation and Maintenance Sheet for more information.

TROUBLESHOOTING	
PROBLEM	REPAIR CHECKLIST
1. Insufficient bubbler flow.	<ul style="list-style-type: none">1a. Check that inlet screwdriver stop valve is wide open. Turn counterclockwise.b. Verify minimum 30 psi flowing supply pressure.c. Clean strainer. See 5874SS Valve Manual.d. Adjust valve to increase flow. Use front adjust screw or see 5874SS Valve Manual.

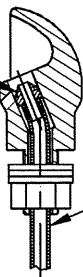
General Notes:

Before tightening nut and ferrule assembly, push tubing into fitting until it bottoms out to ensure correct engagement with O-Ring.

For more information on Haws Products, please see our website: www.hawsco.com

PARTS BREAKDOWN

NOZZLE BODY IS
NOT REMOVABLE

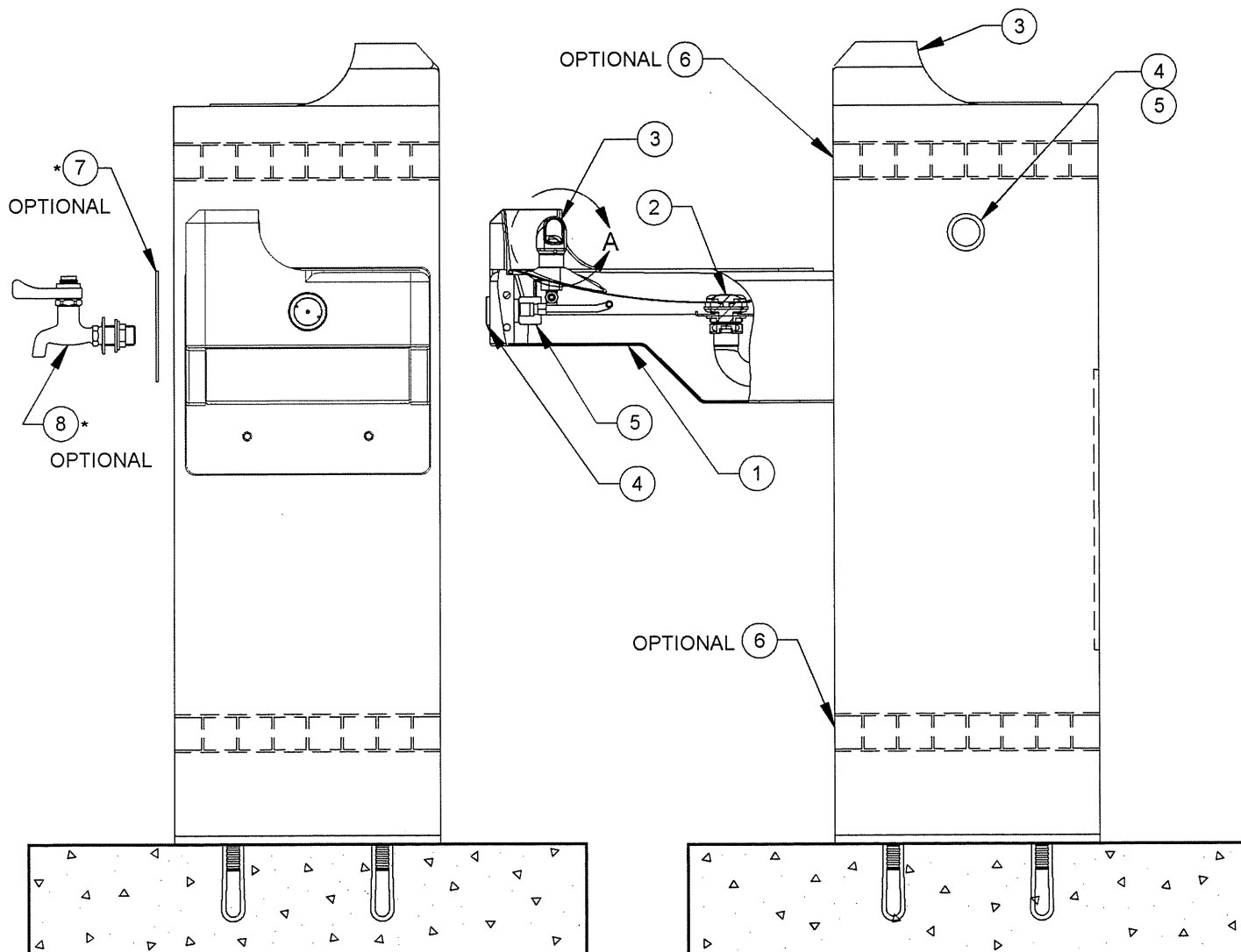


3/8" OD TUBING IS PART
OF BUBBLER HEAD AND
IS NOT REMOVABLE

DETAIL A
ROTATED 90° INTO VIEW
DETAIL OF ITEM 3

ITEM	DESCRIPTION	PART NO.
1	BOTTOM PLATE	PBM1047
2	STRAINER ASSY	6466
3	BUBBLER HEAD	5703M
4	PUSH BTN ASSY	PBA7
5	VALVE	5874SS
6	TILE (OPTIONAL)	
7	ACCES PLATE SST W/HOLE (OPTIONAL)	0004499489
8	BIB FAUCET, SELF CLOSING (OPTIONAL)	6250LF

*** NOTE: ITEM 7 (ACCESS PLATE W/HOLE)
MUST BE USED WITH ITEM 8
(BIB FAUCET, SELF CLOSING).**

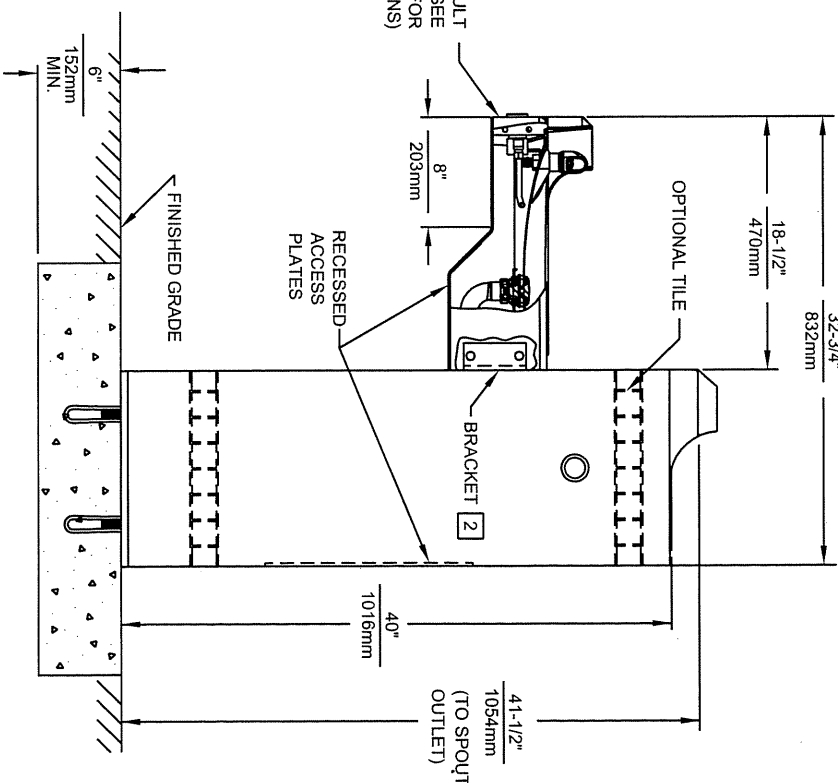
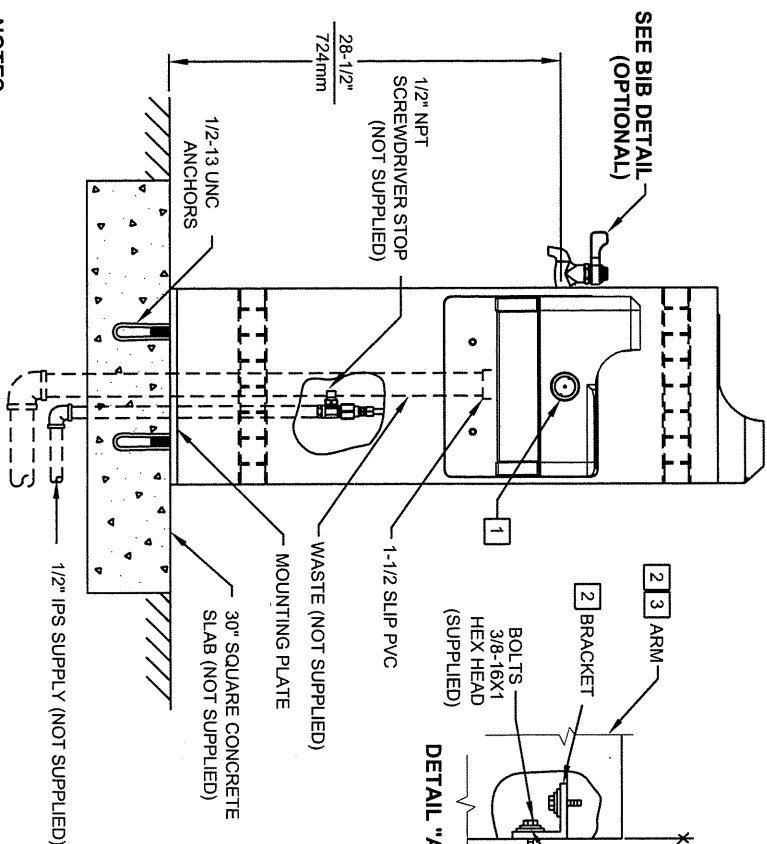
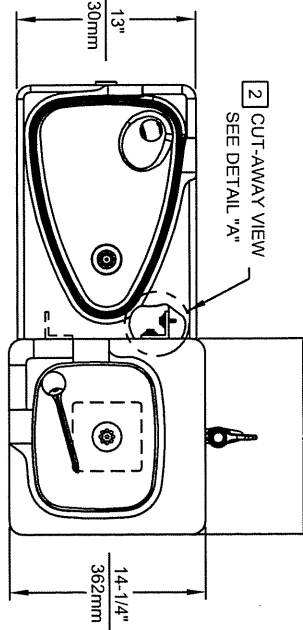
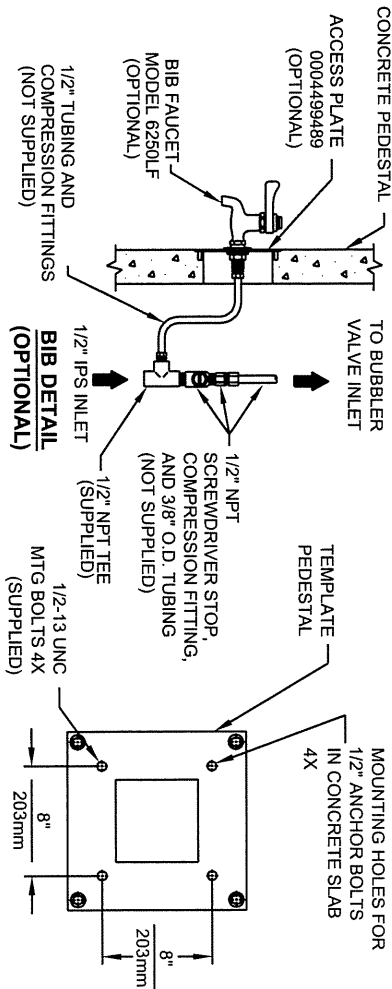


Haws®

1455 KLEPPE LANE
SPARKS, NEVADA 89431
(775) 359-4712 FAX (775) 359-7424
E-MAIL: HAWS@HAWSO.COM
WEBSITE: WWW.HAWSO.COM

ECN NO. REVISED PER BY	ECN: 4725	HM	MODEL(S)	3150	PART NUMBER	0002077070
DRAWN	DATE	CHKD			DRAWING NO.	REV
D. OLLOM	7/25/85	JH			12808C00	23
APPROVED	DATE				SCALE: 1:4	DRAWING TYPE: PARTS BREAKDOWN
	2/24/12				SIZE: A	SHEET 1 OF 1

WHEN ORDERING PARTS PLEASE SPECIFY MODEL NUMBER.



- NOTES:**
- 1 REFER TO 5874SS OPERATION AND MAINTENANCE MANUAL FOR PUSH BUTTON AND VALVE INSTALLATION/MAINTENANCE INSTRUCTIONS.
 - 2 PROCEDURE FOR ASSEMBLING ARM TO PEDESTAL: IMPORTANT: L-BRACKETS ARE PRE-ASSEMBLED AND MUST NOT BE LOOSENED FOR ANY REASON.
- NOTES CONTINUED ON SHEET 2 OF 2.



1455 KLEPPER LANE
SPARKS, NEVADA 89431
(775) 359-4712 FAX (775) 359-7424
E-MAIL: HAWS@HAWS.CO.COM
WEBSITE: WWW.HAWS.CO.COM

EDN NO. REVISED PER BY:	MODEL(S)	3150
DRAWN: ECL: 4725 HM	DATE: 7/10/12	SCALE: 1:13
C.L. 170992	DATE: 7/10/12	DRAWING TYPE: INSTALLATION
APPROVED: 7/2/12	DATE: 7/2/12	SIZE: A
PART NUMBER: 0002077070.D	DRAWING NO: 10324C00	SHEET 1 OF 2

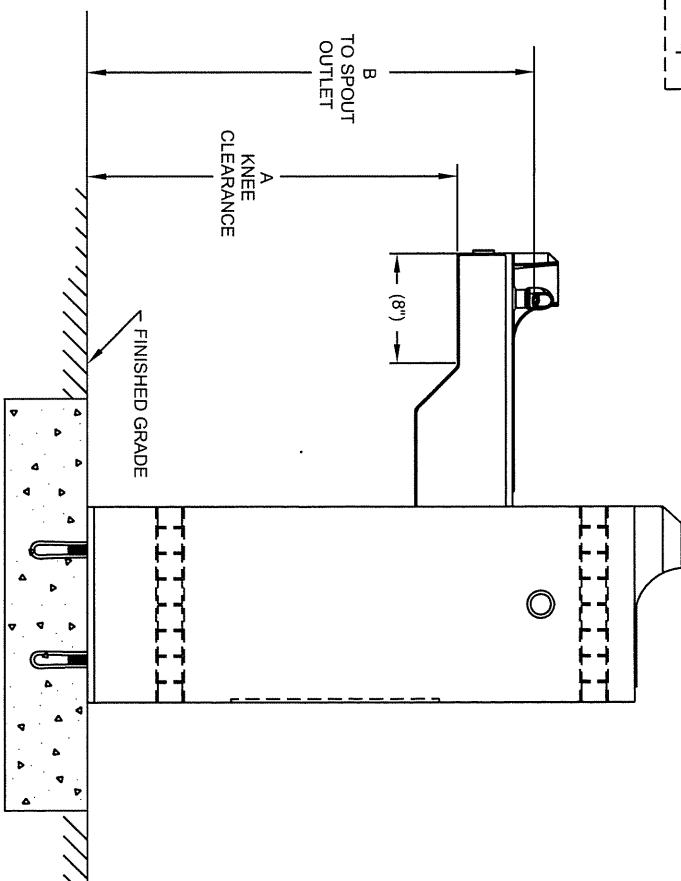
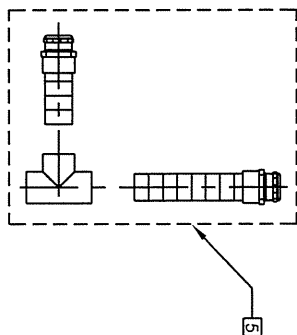


FIGURE 1

STEP 1: ATTACH ENTIRE ARM ASSEMBLY TO MOUNTING PLATE ON PEDESTAL USING THE 3/8" -16 X 1" BOLTS AND WASHERS (SUPPLIED) AND TIGHTEN SECURELY IN PLACE

TIGHTEN SECURELY IN PLACE.

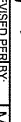
STEP 2: (OPTIONAL) APPLY CAULKING AS NEEDED TO FILL ANY GAP BETWEEN ARM AND PEDESTAL.

3 SIDE ARM IS ADJUSTABLE TO ACCOMMODATE EITHER CHILD OR ADULT HEIGHTS (SEE "AVAILABLE ARM HEIGHTS" CHART).

4 BASED ON DESIRED HEIGHT (CHILD OR ADULT) OF ARM, ORIENT BACKPLATE AS SHOWN IN FIGURE 1 AND USE APPROPRIATE SHADED HOLES.

5 WASTE ASSEMBLY IS SUPPLIED DISASSEMBLED, THE SHORTER OF THE TWO PIECES IS FOR THE ARM DRAIN, AND MUST BE INSTALLED SO THAT ANY BEND IN THE FLEX TUBING WILL ALLOW WATER TO DRAIN COMPLETELY. THE LONGER IS FOR THE PEDESTAL DRAIN AND IS SUPPLIED AT THE LENGTH REQUIRED TO ASSEMBLE THE UNIT WITH THE ARM AT CHILD HEIGHT. IN ORDER TO ASSEMBLE AT ADULT HEIGHT, 3" MUST BE CUT FROM THE END OF THE FLEX TUBING PRIOR TO ASSEMBLY. TEE IS TO BE GLUED TO THE FLEX TUBING WASTE ARMS USING PVC PIPE CEMENT.

AVAILABLE ARM HEIGHTS	
DIM	
A	27" / 686mm
B	32-3/4" / 832mm

		1455 KLEPPLE LANE SPARKS, NEVADA 89431 (775) 359-4712 FAX (775) 359-4724 E-MAIL: HAWS@HAWMSCO.COM WEBSITE: WWW.HAWMSCO.COM	
ECN NO	REVISION PER BY	MODEL(S)	PART NUMBER
0001	ENCL 4725		0002077070.D
DRAWN:	DATE:	QTY:	DRAWING NO
CJL	08992	3150	10324C00
APPROVED:	DATE:	SCALE	SHEET 2 OF 2
	12/12/12	1:13	
		DRAWING TYPE	INSTALLATION