



INSTALLATION, OPERATION & MAINTENANCE INSTRUCTIONS

1455 Kleppe Lane ♦ Sparks, NV 89431-6467 ♦ (775) 359-4712 ♦ Fax (775) 359-7424
E-mail: haws@hawsco.com ♦ website: www.hawsco.com

No. 2076988(10)

Model 1501 Drinking Fountain

NOTE TO INSTALLER: Please leave this information with the Maintenance Department.

LIMITED WARRANTY

HAWS warrants that this specific product is guaranteed against defective material or poor workmanship for a period of **one year from date of shipment**. HAWS liability under this warranty shall be discharged by furnishing without charge F.O.B. HAWS Factory any goods, or part thereof, which shall appear to the Company upon inspection to be of defective material or not of first class workmanship, provided that claim is made in writing to Haws within a reasonable period after receipt of the product. Where claims for defects are made, the defective part or parts shall be delivered to the Company, prepaid, for inspection. HAWS will not be liable for the cost of repairs, alterations or replacements, or for any expense connected therewith made by the owner or his agents, except upon written authority from HAWS, Sparks, Nevada. HAWS will not be liable for any damages caused by defective materials or poor workmanship, except for replacements, as provided above. Buyer agrees that HAWS shall not be liable for general, special, or consequential damages claimed to arise under the contract of sale. The drinking fountain manufactured by HAWS is warranted to function if installation and maintenance instructions provided are adhered to. The units also must be used for the purpose for which they were intended.

**NO OTHER WARRANTIES EXPRESSED OR IMPLIED ARE AUTHORIZED,
PROVIDED OR GIVEN BY HAWS.**

**SHOULD YOU EXPERIENCE DIFFICULTY WITH THE INSTALLATION OF THIS
MODEL PLEASE CALL:**

TECHNICAL SUPPORT: 1-800-766-5612

FOR CUSTOMER SERVICE: 1-888-640-4297

RECOMMENDED TOOLS: Hack saw, pipe joint sealant, screwdriver, level, 12" adjustable wrench, 10" pipe wrench, 5/64" hex key wrench, 9/16", 1/2", 7/16" socket wrench or open end wrench.

LOCATION OF UNIT: The Model 1501 Drinking Fountain is a wheelchair accessible drinking water facility. The height dimensions shown, meet current ADA requirements. When installing this unit, local, state or federal codes should be adhered to. If height other than shown is required, then dimensions must be adjusted accordingly.

SUPPLY LINE: The minimum recommended line size is 1/2" IPS with 30-90 psi (2-6 ATM) flowing pressure. Where sediment or mineral content is a problem, an inlet filter is recommended.

PLUMBING CONNECTIONS: Inlet is 3/8" O.D. tubing fitting. Waste trap outlet is 1-1/4" IPS.

MAINTENANCE: Periodically clean the strainer. Refer to 5874SS Valve Manual for more information.

TROUBLESHOOTING

| PROBLEM | REPAIR CHECKLIST |
|-------------------------------|----------------------------------------------------------------------------------------------------------------------------------------------------------------------------------------------------------------------------------------------------------------------|
| 1. Insufficient bubbler flow. | 1a. Check that inlet screwdriver stop valve is in wide-open position. 1b. Verify minimum 30 psi flowing supply pressure. 1c. Clean strainer. See 5874SS Valve Manual. 1d. Adjust valve to increase flow. Use front adjust screw or see 5874SS Valve Manual. |

INSTALLATION PROCEDURE

Note 1: For all plastic push-in type fitting connections; push tubing into fitting until it bottoms out to ensure a watertight connection (See Step 3 for details). Only connect NSF-61 copper or plastic tubing to these push-in type fittings.

Refer to Installation Drawing for mounting height. For steps below, refer to exploded view.

STEP 1: Remove hex lock nut and washers from bubbler heads, set aside. Install bubbler heads through receptor. Install respectively rubber washer, fiber washer, then nut onto bubbler shank. Securely tighten nut.

STEP 2: Remove push button assembly from 5874SS valves with spanner wrench provided. Be sure to also remove (chrome plated) ring nut and (chrome plated) washer from valves. At this point, carefully follow installation instructions shown on page 5 of 5 of **5874SS Valve/Push Button Operation and Maintenance Manual** under heading: **"INSTALLATION INSTRUCTIONS FOR 5874SS W/PBA7"**

INSTALLATION PROCEDURE

STEP 3: Tubing must be prepared properly prior to assembling plastic fittings:

Tubing Preparation:

1. Cut the tubing squarely and remove any burrs.
2. Mark from end of tube the length of insertion.

Insertion depths (depending on tubing size used):

1/4 tube – 11/16”

3/8 tube – 3/4”

1/2 tube – 7/8”

3. Insert tube straight into fitting until it bottoms out on interior shoulder and insertion mark is no longer visible.
4. All tubing routing must be done in such a manner as to keep side strain on fittings to a minimum.
5. To release from fitting; pull collet toward body and pull on tubing to release tube.

STEP 4: Make tubing connections from bubbler to the outlet side of control valve. Follow instructions for tubing preparation and insertion depths from Step 3.

STEP 5: Place strainer into receptor (using putty), secure in place using a fiber washer and lock nut.

STEP 6: Mount fountain with back panel to mounting plate using 3/8-16 hardware (provided).

STEP 7: Flush supply line to clear debris. Connect to a 1/2” NPT supply line and tighten.

STEP 8: Make certain that fountain is level and well secured to wall. Connect waste trap to a 1-1/4” IPS waste pipe (to be supplied by customer).

STEP 9: Completely open the screwdriver stop (not supplied) and check for leaks.

STEP 10: Adjust valves for desired flow height. See 5874SS Valve Manual (supplied).

STEP 11: Attach bottom plates to fountain using #10-24 hardware provided.

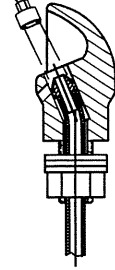
For more information on Haws products, see our website: www.hawsco.com

PARTS BREAKDOWN

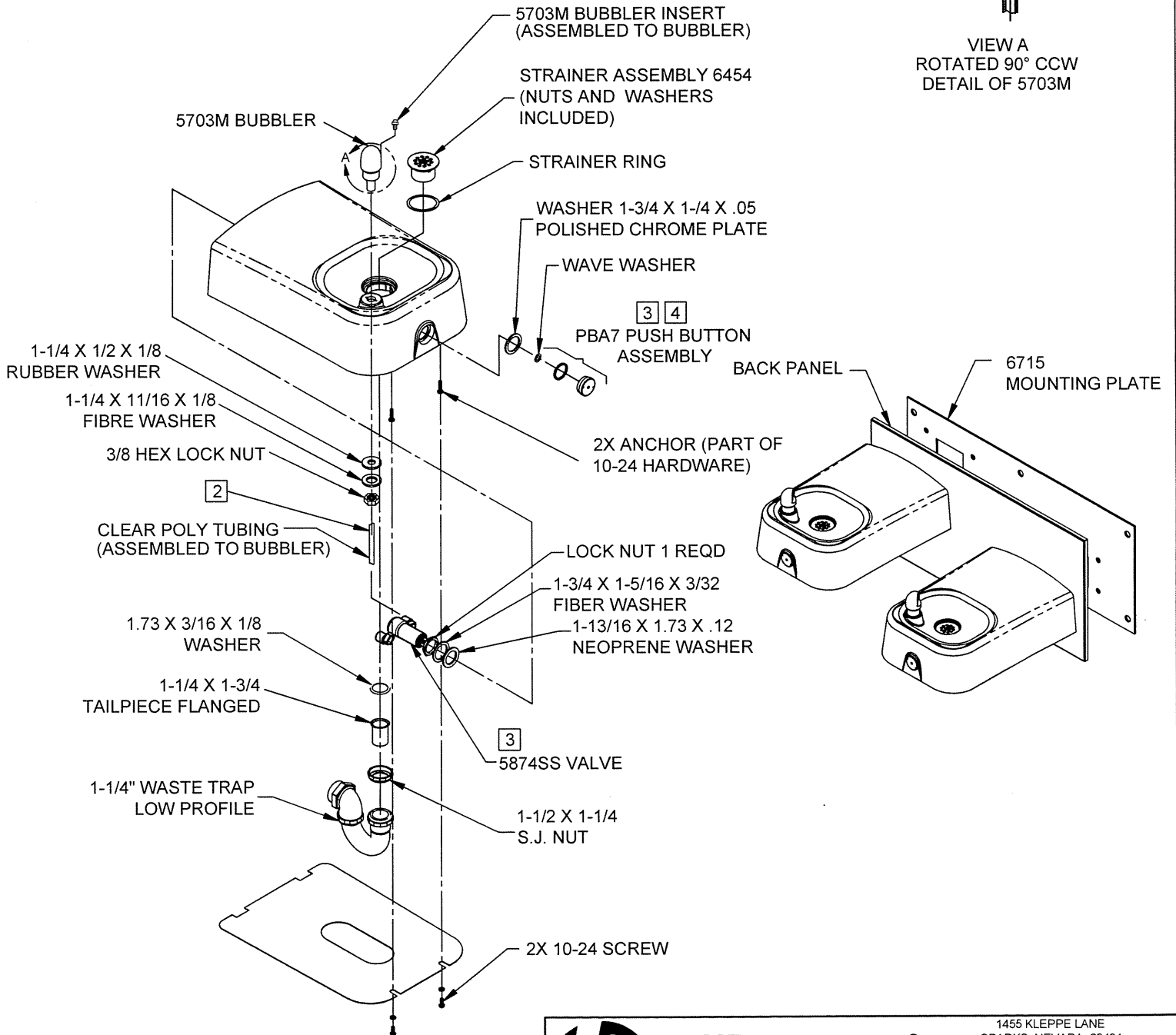
NOTES:

1. REMOVED.
2. CONNECT CLEAR "POLYETHYLENE" TUBING ON FREE FLOW SIDE (VALVE TO BUBBLER HEAD) ONLY.
3. REFER TO 5874SS/VRK5874 OPERATION AND MAINTENANCE MANUAL FOR INSTALLATION INSTRUCTIONS.
4. MUST APPLY 1 DOT OF LOCTITE 222MS THREADLOCKER ON FEMALE THREADS OF PUSH BUTTON. SEE 5874SS OPERATION AND MAINTENANCE MANUAL (PAGE 5 OF 5) FOR PROPER APPLICATION PROCEDURE.

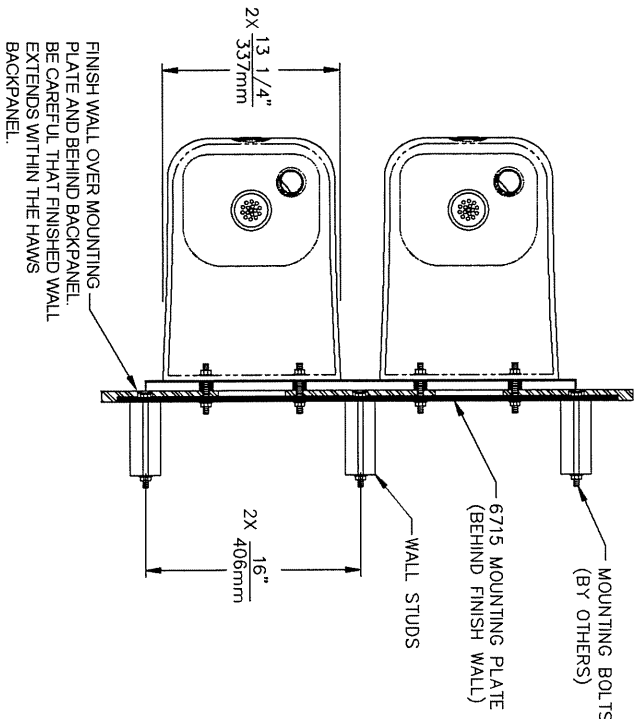
DRIVER, NOZZLE
 .25 HEX PN
 0002082253
 (OPTIONAL) FOR
 REMOVAL OF
 NOZZLE WITH TUBE



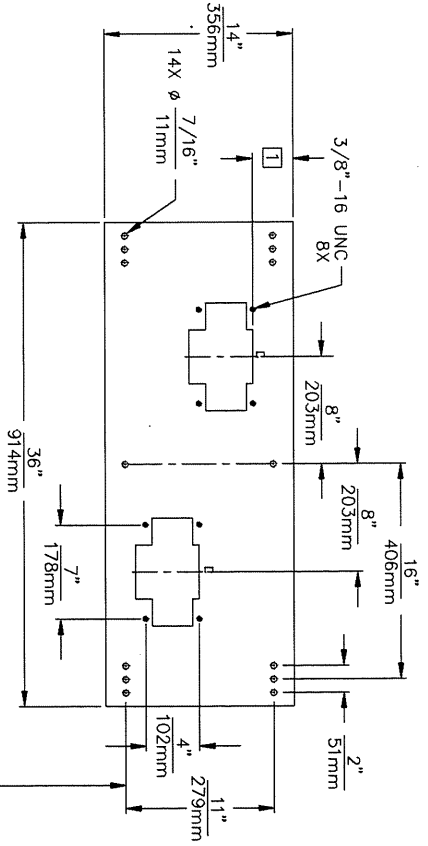
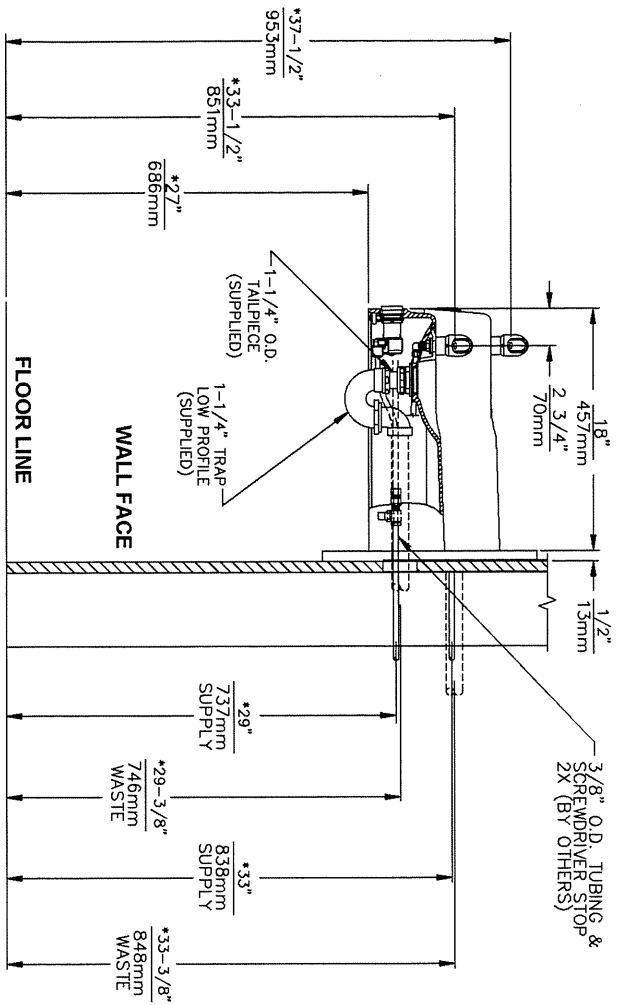
VIEW A
 ROTATED 90° CCW
 DETAIL OF 5703M



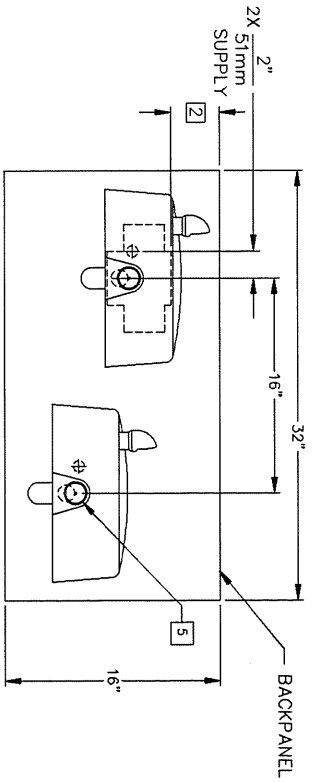
| | | | |
|--------------------------------------------------|-----------------------------|-----------------------------------------------------------------------------------------------------------------------------------|-------------------------------|
| | | 1455 KLEPPE LANE SPARKS, NEVADA 89431 (775) 359-4712 FAX (755) 359-7424 E-MAIL: HAWS@HAWSO.COM WEBSITE: WWW.HAWSO.COM | |
| | | ECN NO. REVISED PER BY ECN: 4733 HIX | MODEL(S) 1501 |
| DRAWN A DAY | DATE ORIGINAL 7/24/07 | APPROVED DATE 7/24/07 | DRAWING NO. 0002076988 |
| WHEN ORDERING PARTS PLEASE SPECIFY MODEL NUMBER. | | SCALE: 1:6 | DRAWING TYPE: PARTS BREAKDOWN |
| | | SIZE: A | SHEET 1 OF 1 |



FINISH WALL OVER MOUNTING PLATE AND BEHIND BACKPANEL. BE CAREFUL THAT FINISHED WALL EXTENDS WITHIN THE HAWS BACKPANEL.



6715 MOUNTING PLATE
MUST BE INSTALLED BEFORE FINISH WORK.
THIS PLATE IS A STANDARD ITEM ON MODEL 1501.



NOTES:

1. 3" DIM TO SLOTTED OPENING ON THE MOUNTING PLATE MUST BE ON THE TOP L.H. SIDE WHEN INSTALLED.
2. 4 5/8" DIM TO SLOTTED OPENING ON THE BACKPANEL MUST BE ON TOP L.H. SIDE WHEN INSTALLED.
3. HOLD ROUGH-IN DIMENSIONS ± 1/4" (6.4MM).
4. WHEN INSTALLING THIS UNIT, LOCAL, STATE, OR FEDERAL CODES SHOULD BE ADHERED TO. FOR INSTALLATION HEIGHTS OTHER THAN SHOWN, DIMENSIONS MARKED (*) MUST BE ADJUSTED ACCORDINGLY.
5. REFER TO 5874SSVVRK5874 OPERATION AND MAINTENANCE MANUAL FOR PUSH BUTTON AND VALVE INSTALLATION/MAINTENANCE INSTRUCTIONS.



1455 KLEPPE LANE
SPARKS, NEVADA 89431
(775) 359-4712 FAX (759) 359-7424
E-MAIL: HAWS@HAWS.CO.COM
WEBSITE: WWW.HAWS.CO.COM

| | | |
|-------------------------------|-----------------------|----------------------------|
| ENGINEER/REVISED PER: BY: HAW | MODEL(S) | 1501 |
| DRAWN: EON-4733 | DATE: 08/15/01 | SCALE: 1:14 |
| APPROVER: F. VASQUEZ | DATE: 08/15/01 | DRAWING TYPE: INSTALLATION |
| PART NUMBER: 0002076988 D | DRAWING NO.: 14939A00 | REV: 10 |
| SIZE: A | SHEET: 1 | OF: 1 |