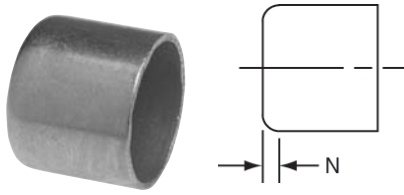
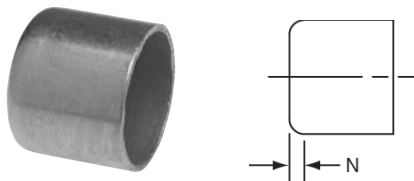


CAPS



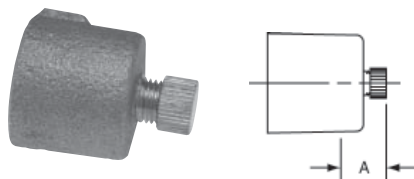
617
Tube Cap C – Wrot

NOM. SIZE	APPROX. NET WT./LBS.	DIM. N INCHES
1/8	0.01	1/32
1/4	0.01	3/32
3/8	0.01	3/32
1/2	0.02	3/32
5/8	0.03	1/8
3/4	0.04	1/8
1	0.07	5/32
1 1/4	0.10	3/32
1 1/2	0.16	1/8
2	0.27	5/32
2 1/2	0.50	7/32
3	0.78	7/32
4	1.66	1/4



717
Tube Cap C – Cast

NOM. SIZE	APPROX. NET WT./LBS.	DIM. N INCHES
5	5.48	7/16
6	9.07	17/32

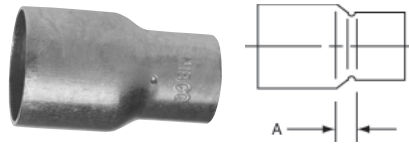


717-D
Drain Cap – Cast

NOM. SIZE	APPROX. NET WT./LBS.	DIM. A INCHES
1/2	0.06	21/32

Consult price sheet for Made to Order items and for minimum order quantities.

COUPLINGS

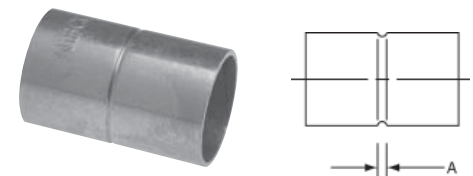


600
Reducing Coupling C x C – Wrot

NOM. SIZE	APPROX. NET WT./LBS.	DIM. A INCHES
1/8 x 3/16 O.D.	0.01	5/32
5/16 O.D. x 1/8	0.01	3/16
1/4 x 5/16 O.D.	0.01	3/16
1/4 x 1/8	0.01	3/16
3/8 x 1/4	0.02	3/16
3/8 x 5/16 O.D.	0.01	1/4
3/8 x 1/8	0.01	1/4
1/2 x 3/8	0.03	3/16
1/2 x 1/4	0.02	1/4
1/2 x 1/8	0.03	11/32
5/8 x 1/2	0.05	3/16
5/8 x 3/8	0.04	11/32
5/8 x 1/4	0.03	13/32
3/4 x 5/8	0.07	3/16
3/4 x 1/2	0.06	9/32
3/4 x 3/8	0.06	3/8
3/4 x 1/4	0.05	11/32
1 x 3/4	0.11	11/32
1 x 5/8	0.09	3/8
1 x 1/2	0.10	11/32
1 x 3/8	0.10	13/32
1 1/4 x 1	0.16	5/16
1 1/4 x 3/4	0.18	17/32
1 1/4 x 5/8	0.18	5/8
1 1/4 x 1/2	0.14	7/16
1 1/2 x 1 1/4	0.23	5/16
1 1/2 x 1	0.22	9/16
1 1/2 x 3/4	0.20	3/8
1 1/2 x 1/2	0.19	1/2
2 x 1 1/2	0.41	9/16
2 x 1 1/4	0.35	11/16
2 x 1	0.37	7/16
2 x 3/4	0.34	17/32
2 x 1/2	0.35	23/32
2 1/2 x 2	0.59	9/16
2 1/2 x 1 1/2	0.65	11/16
2 1/2 x 1 1/4	0.65	13/16
2 1/2 x 1	0.73	29/32

Continues...

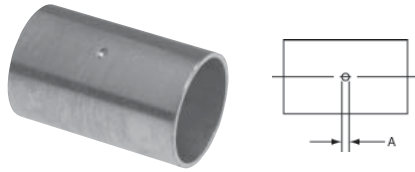
NOM. SIZE	APPROX. NET WT./LBS.	DIM. A INCHES
3 x 2 1/2	0.98	1/2
3 x 2	1.06	15/16
3 x 1 1/2	0.92	11/32
3 1/2 x 3	1.52	1/2
4 x 3 1/2	2.12	19/32
4 x 3	1.92	27/32
4 x 2 1/2	1.77	1
4 x 2	1.92	1 1/4
5 x 4	3.50	3 31/32
5 x 3	3.18	1 15/32
5 x 2 1/2	3.50	1 3/16
5 x 2	3.09	2 1/32
6 x 5	5.70	1 1/8
6 x 4	5.24	1 1/2
6 x 3	5.04	2
6 x 2 1/2	5.13	2 1/4
6 x 2	4.89	2 1/2
8 x 6	13.06	1 19/32
8 x 4	12.22	2 19/32
8 x 3	11.79	3 3/32
8 x 2 1/2	12.64	3 3/8



600-RS
Coupling with Rolled Tube Stop
C x C – Wrot

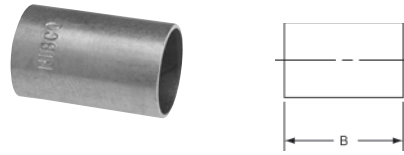
NOM. SIZE	APPROX. NET WT./LBS.	DIM. A INCHES
1/8 O.D.	0.01	1/16
3/16 O.D.	0.01	3/32
1/8	0.01	1/16
5/16 O.D.	0.01	3/32
1/4	0.01	1/16
3/8	0.01	3/32
1/2	0.03	3/32
5/8	0.04	3/32
3/4	0.06	3/32
7/8	0.09	3/32
1	0.11	3/32
1 1/4	0.16	1/8
1 1/2	0.23	1/8
2	0.41	1/8
2 1/2	0.65	1/8
3	0.93	1/8
3 1/2	1.45	5/32
4	1.93	7/32

COUPLINGS *continued*



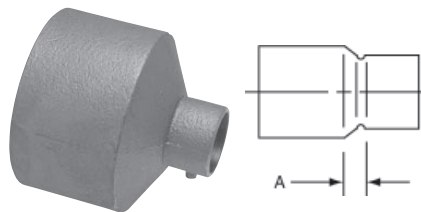
600-DS
Coupling with Dimpled Tube Stop
C x C – Wrot

NOM. SIZE	APPROX. NET WT./LBS.	DIM. A INCHES
3/16 O.D.	0.01	3/32
1/8	0.01	1/16
5/16 O.D.	0.01	3/32
1/4	0.01	1/16
3/8	0.01	3/32
1/2	0.03	3/32
5/8	0.04	3/32
3/4	0.06	3/32
7/8	0.09	3/32
1	0.11	3/32
1 1/4	0.16	1/8
1 1/2	0.23	1/8
2	0.41	1/8
2 1/2	0.65	1/8
3	0.93	1/8
3 1/2	1.45	5/32
4	1.93	7/32
5	3.53	7/32
6	5.63	7/32
8	14.12	15/32



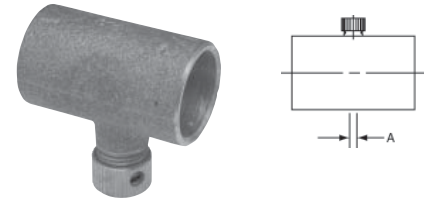
601
Coupling without Stop
C x C – Wrot

NOM. SIZE	APPROX. NET WT./LBS.	DIM. B INCHES
1/4	0.01	11/16
3/8	0.01	27/32
1/2	0.03	1
5/8	0.04	1 11/32
3/4	0.06	1 19/32
1	0.11	1 29/32
1 1/4	0.16	2 1/16
1 1/2	0.23	2 5/16
2	0.41	2 13/16
2 1/2	0.64	2 15/16
3	0.86	3 5/16
3 1/2	1.40	3 13/16
4	1.84	4 5/16
5	3.50	5 5/16
6	5.60	6 3/16
8	13.68	8 3/32



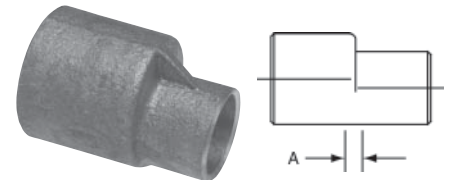
701
Reducing Coupling C x C – Cast

NOM. SIZE	APPROX. NET WT./LBS.	DIM. A INCHES
3 x 1 1/4	1.35	23/32
3 x 1	1.64	27/32



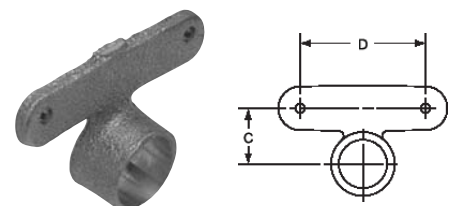
701-D
Drain Coupling C x C – Cast

NOM. SIZE	APPROX. NET WT./LBS.	DIM. A INCHES
1/2	0.08	1/4
3/4	0.14	1/4
1	0.22	1/4



702
Eccentric Coupling C x C – Cast

NOM. SIZE	APPROX. NET WT./LBS.	DIM. A INCHES
3/4 x 1/2	0.10	17/32
1 x 3/4	0.18	1/4
1 1/4 x 1	0.25	1/4
1 1/4 x 3/4	0.24	9/32

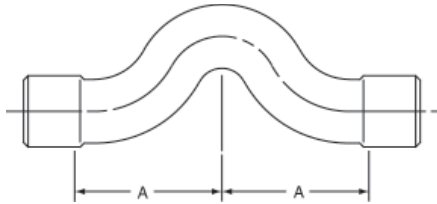


724-5-A
Hy-Set Hanger Coupling
C – Cast

NOM. SIZE	APPROX. NET WT./LBS.	DIM. C INCHES	DIM. D INCHES
1/2	0.05	1 5/8	23/32
3/4	0.09	1 5/8	27/32
1	0.13	1 5/8	1

Consult price sheet for Made to Order items and for minimum order quantities.

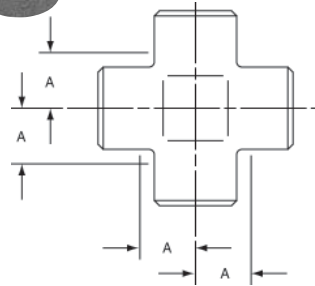
COUPLINGS *continued*



736
Cross-Over Coupling
C x C – Cast

NOM. SIZE	APPROX. NET WT./LBS.	DIM. A INCHES
1/2	0.27	1 ⁷ / ₁₆
3/4	0.60	1 ²⁹ / ₃₂

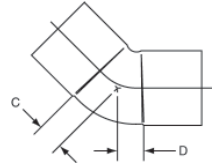
CROSSES



735
Cross C x C x C x C – Cast

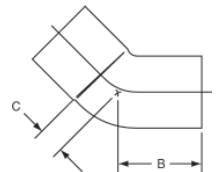
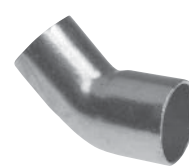
NOM. SIZE	APPROX. NET WT./LBS.	DIM. A INCHES
3/8	0.09	3/8
1/2	0.15	7/16
3/4	0.30	9/16
1	0.54	2 ³ / ₃₂
1 1/4	0.78	7/8
1 1/2	1.05	1
2	2.00	1 ¹ / ₄
2 1/2	2.96	1 ¹ / ₂

ELBOWS



606
45° Elbow C x C – Wrot

NOM. SIZE	APPROX. NET WT./LBS.	DIM. C INCHES	DIM. D INCHES
1/8	0.01	1/4	1/4
1/4	0.02	9/32	9/32
3/8	0.03	3/16	3/16
1/2	0.04	9/32	9/32
5/8	0.09	15/32	15/32
3/4	0.10	11/32	11/32
7/8	0.20	11/16	11/16
1	0.16	3/8	3/8
1 1/4	0.25	17/32	17/32
1 1/2	0.35	19/32	19/32
2	0.65	25/32	25/32
2 1/2	1.07	29/32	29/32
3	1.58	1 ¹ / ₈	1 ¹ / ₈
4	3.35	1 ⁷ / ₁₆	1 ⁷ / ₁₆
5	11.05	1 ⁹ / ₁₆	1 ⁹ / ₁₆
6	16.95	2	2
8	23.00	2 ⁹ / ₃₂	2 ⁹ / ₃₂



606-2
45° Fitting Elbow Ftg x C – Wrot

NOM. SIZE	APPROX. NET WT./LBS.	DIM. B INCHES	DIM. C INCHES
1/4	0.02	9/16	1/4
1/2	0.04	3/4	7/32
5/8	0.08	1 ¹ / ₈	13/32
3/4	0.10	1 ¹ / ₁₆	5/16
1	0.16	1 ⁷ / ₃₂	15/32
1 1/4	0.25	1 ¹⁹ / ₃₂	17/32
1 1/2	0.35	1 ²⁵ / ₃₂	19/32
2	0.65	2 ³ / ₁₆	25/32
2 1/2	1.07	2 ³ / ₁₆	29/32
3	1.55	2 ¹⁹ / ₃₂	1 ⁵ / ₃₂

Consult price sheet for Made to Order items and for minimum order quantities.