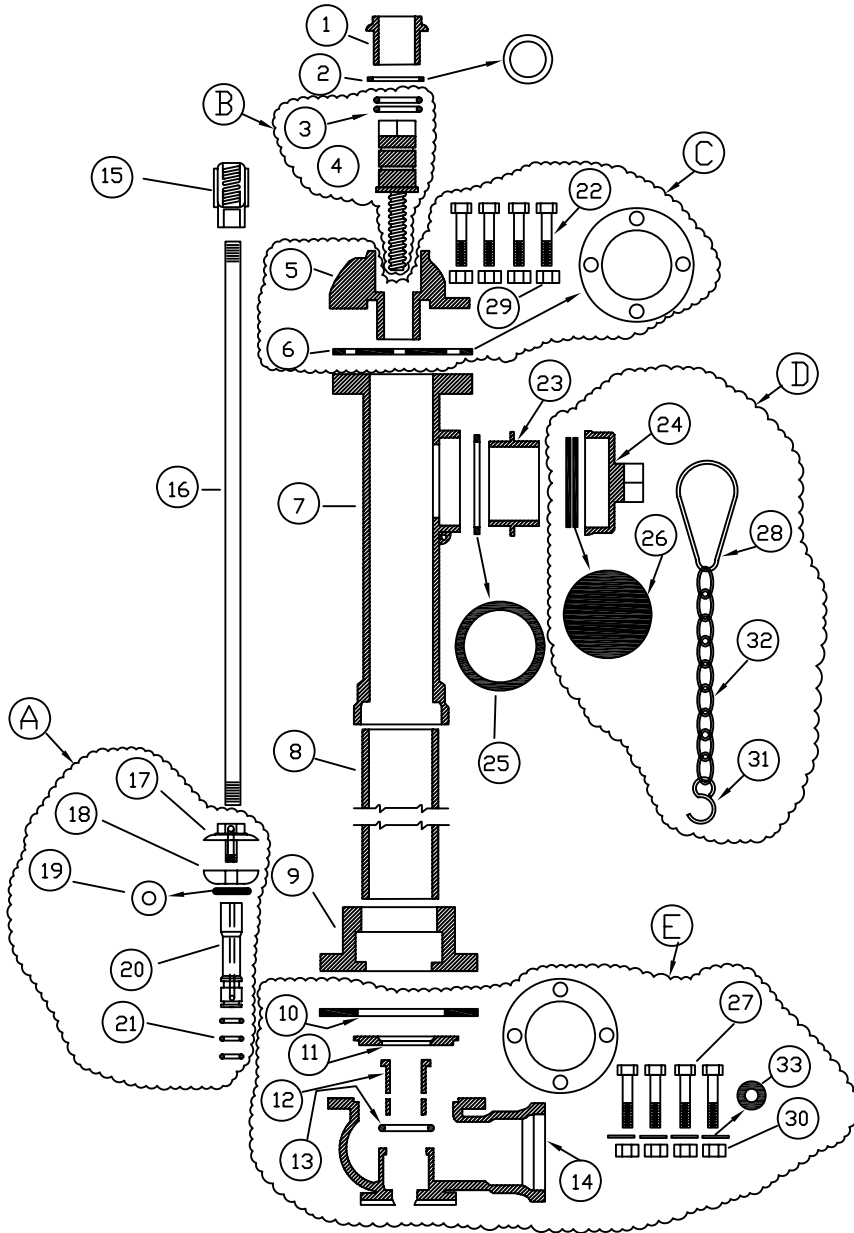



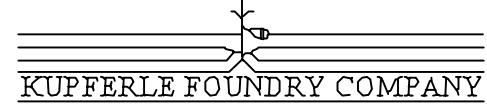
# #2 POST HYDRANT



NO.	QTY.	PART NUMBER	DESCRIPTION
1	1	739	PACKING NUT
2	1	669	GASKET
3	2	668	O-RING
4	1	501A	OPERATING SCREW
5	1	581-C	TOP CAP
6	1	2-A-NS	TOP CAP GASKET
7	1	487-H	TOP STOCK
8	1	3 DUC	3" DUCTILE PIPE
9	1	661	COUPLING
10	1	2-A-NS	BOTTOM GASKET
11	1	521	SEAT RING
12	1	611	WASTE TUBE
13	1	A-19	O-RING
14	1	571	BOTTOM
15	1	511	CONNECTING NUT
16	1	505-B	OPERATING ROD
17	1	537-P	PLUNGER TOP
18	1	541	SEAT RUBBER
19	1	539W	S.S. WASHER
20	1	539L2	PLUNGER TUBE
21	3	2OR	O-RING
22	4	628A-B	BOLTS
23	1	716	NOZZLE
24	1	592A	SIDE CAP
25	1	95G	GASKET
26	2	A16	SIDE CAP GASKET
27	4	629-A-B	BOTTOM BOLTS
28	1	PR	CHAIN ASSEMBLY
29	4	629-A-N	TOP CAP NUTS
30	4	629-A-N	BOTTOM NUTS
31	1	9S	S-HOOK
32	1	CH	LENGTH OF CHAIN
33	4	1/2 W	BOTTOM BOLT WASHER

## ASSEMBLIES

LETTER	QTY.	PART NUMBER	DESCRIPTION
A	1	X531-UDR	N.S. PLUNGER COMPLETE
B	1	X501A	1 1/2 PENT. OPER. SCREW
C	1	X581C	N.S. TOP CAP COMPLETE
D	1	X592A	2 1/2 NST 1 1/2 PENT S.CAP
E	1		SPECIFY INLET OF BOTTOM

  
  
 2511 N 9TH STREET, ST LOUIS, MO 63102  
 (314) 231-8738 FAX (314) 231-2820 (800) 231-3990

571-A	2" IP
571-C	3" IP
571-D	2" MJ
571-E	3" MJ
571-L	4" MJ